



ISINDEBELE HOME LANGUAGE  
 GRADE 2 – BOOK 1  
 TERMS 1 & 2  
 ISBN 978-1-920458-20-1  
 THIS BOOK MAY NOT BE SOLD.  
 14th Edition



9 781920 458201

a b c d e  
 f g h i j  
 k l m n o p  
 q r s t u  
 v w x y z

ISINDEBELE ILIMI LEKHAYA – IGreyidi 2 Incwadi 1

ISBN 978-1-920458-20-1

Ukubuyekeza ihlaliswe  
 ngokwesiTatimende  
 somThetho-kambiso  
 weKharikhyulamu  
 nokuHlola



Ibizo:

Itlasi:



basic education  
 Department:  
 Basic Education  
 REPUBLIC OF SOUTH AFRICA

ISINDEBELE ILIMI  
 LEKHAYA  
 Incwadi 1  
 Ithemu 1 & 2



UKkz. Angie  
Motshekga  
nguNqgonqgotjhe  
weFundo-Sisekelo



Dorh. Reginah  
Mhaule nguSekela  
kaNqgonqgotjhe  
weFundo-Sisekelo

Iincwadi lezi zenzelwe abantwana beSewula Afrika ngaphasi koburholi bakaNqgonqgotjhe wezeFundo-Sisekelo uMma u-Angie Motshekga kanye neSekela lakhe Dorh. Reginah Mhaule.

Iincwadi zokuSebenzela zakwaRainbow ziyingcenyeyeendlela ezinengi zomNyango wezeFundo-Sisekelo wokungenelela onqophe ukuthuthukisa ukusebenza ngcono kwabafundi beSewula Afrika kumagreyidi wokuthoma asithandathu. Njengamanye wamaHlelo womBuso aphuma phambili, iphrojekthi le isekelwe ngeemali ezibuya esiKhwameni seeMali seLizweloke. Lokhu kusize umNyango ukukhupha iincwadi zokusebenzela lezi ngawo woke amalimi asemthethweni ngaphandle kweendleko. Siyathemba kobana nizokufumana iincwadi zokusebenzela lezi zilisizo khulu ekufundiseni kwenu kwangamalanga kanye nokuqinisekisa kobana abafundi benu bayayiqeda ikharikhulamu.

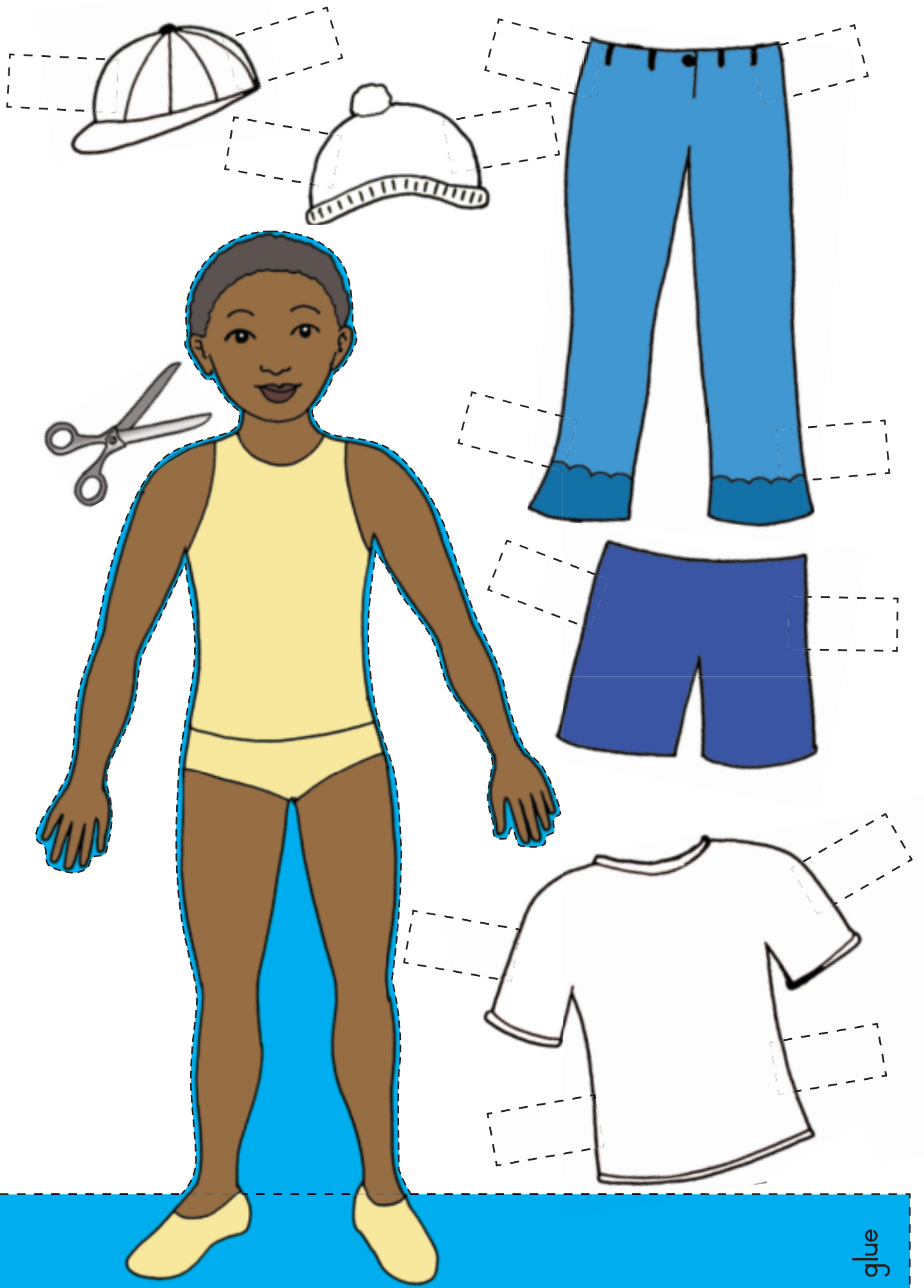
Sitjheje khudlwana ukuhlahla abotitjhere komunye nomunye umsebenzi ngokusebenzisa iinthombe ezitjengisako bona ngikuphi umfundi amele akwenze.

Siyathemba kobana abantwana bazokuthabela ukusebenzisa iincwadi lezi njengombana bakhula bebefunda nje, begodu wena titjhere uzokwabelana nabo ithabo lokufunda.

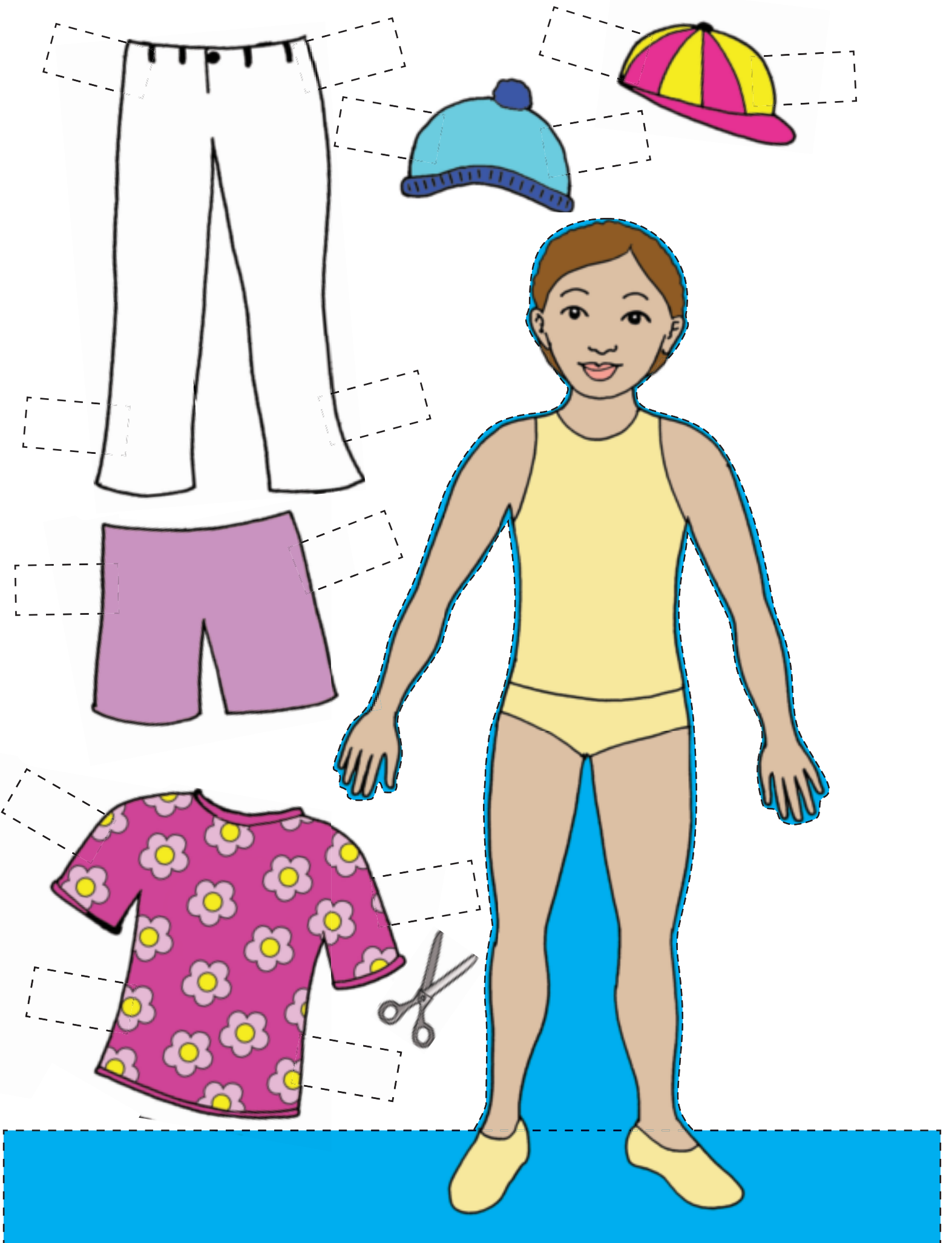
Sinifisela ipumelelo ekusebenziseni iincwadi lezi.

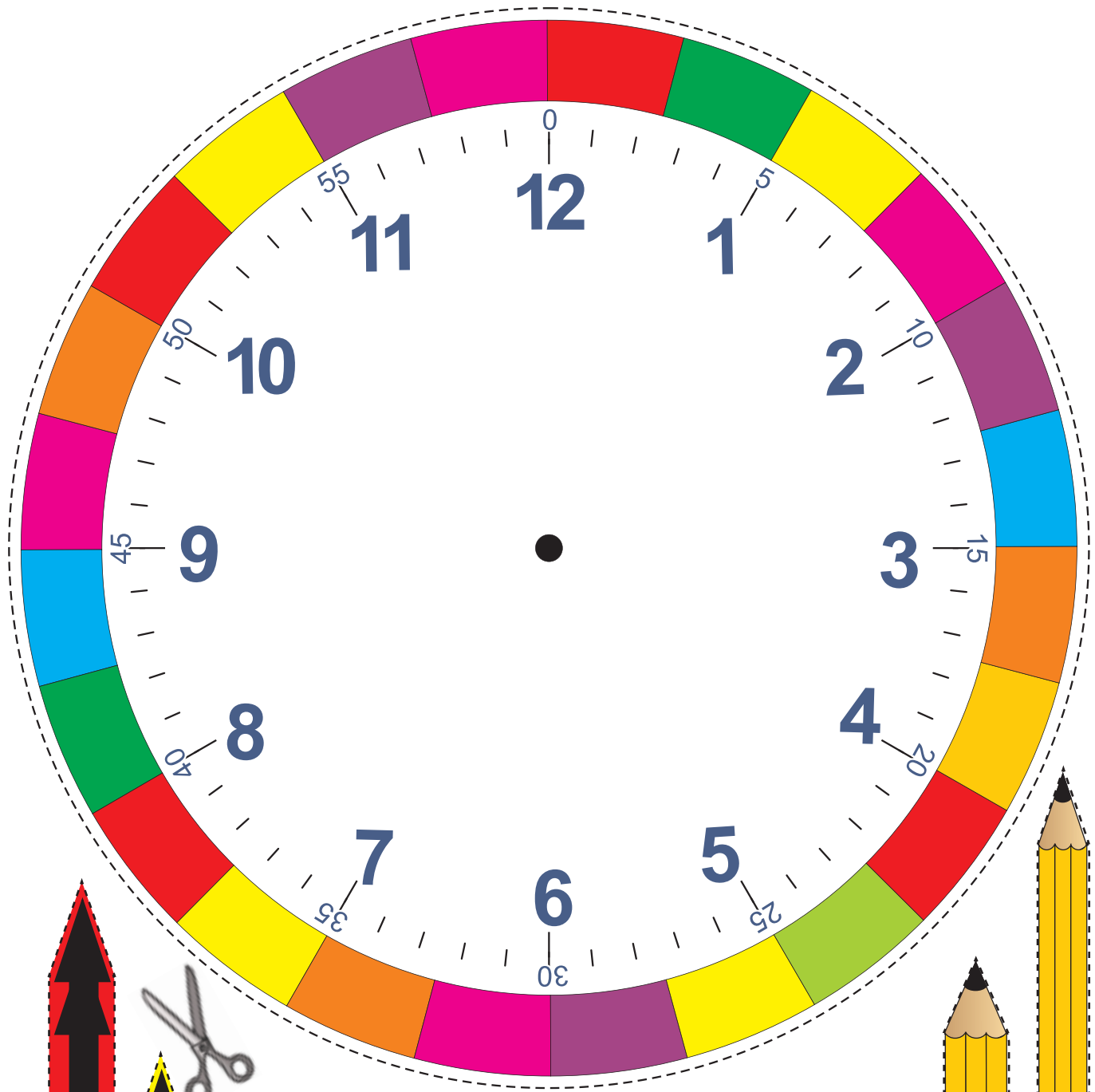
# IIMBOPHO ZABANTU ABATJHA BESEWULA AFRIKA

<p><b>Ukulingana</b></p> <p>Ukuthintana nabo boke abantu ngefanelo nangendlela elungileko. Ungabandlululi.</p>	<p><b>Isithunzi sobuntu</b></p> <p>Yiba nehlonipho kiwo woke umuntu. Yiba nezwele netjhejo kibo boke abantu.</p>	<p><b>Ipilo</b></p> <p>Ipilo yoke iqakathekile. Yelela ipilo ngehlonipho.</p>
<p><b>Umndeni</b></p> <p>Hlonipha bewuthobe ababelethi bakho. Yiba ngolungileko nothembekileko emndenini wakwenu.</p>	<p><b>Ifundo</b></p> <p>Ngena isikolo, ufunde ngokuzimisela usebenze khudlwana. Landela yoke imithetho yesikolo.</p>	<p><b>Umsebenzi</b></p> <p>Siza emndenini wakwenu ngomunye nomunye umsebenzi. Abantwana bangakatelelwa ukufundisa nanyana ukufundisa umsebenzi.</p>
<p><b>Ikululeko nokuphepha</b></p> <p>Ungalimazi, utlhorise, uthusele abanye, ungavumeli abanye bonyana benze lokho. Rarululani ukungezwani nemiraro ngendlela enokuthula nelungileko.</p>	<p><b>Ipahla</b></p> <p>Hlonipha ipahla yabanye abantu. Ungalimazi ipahla yabanye begodu ungazibandakanyi ekwebeni.</p>	<p><b>Ikolo, ikolelo nombono</b></p> <p>Hlonipha ikolo nemibono yabanye.</p>
<p><b>Ukuphepha</b></p> <p>Tjheja bewuthogomele iphasi. Ungadlali ngamanzi nanyana igezi. Tihogomela bewuyelele ipilo yeenlwana neentjalo. Bulunga ikhaya lakho nendawo zihlale zihlanzekile ngaso soke isikhathi.</p>	<p><b>Ukubasisakhamuzi</b></p> <p>Yiba mSewula Afrika othembekileko. Landela imithetho ebekiweko, bewuqinisekise bonyana boke benza njalo.</p>	<p><b>Ikululeko yokuveza umbono namaziso</b></p> <p>Ungaleyi amala nehloyo. Qinisekisa bonyana awukhubazi abanye emoyeni nanyana ubazwise ubuhlungu.</p>



glue

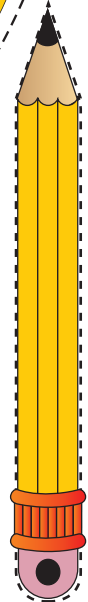
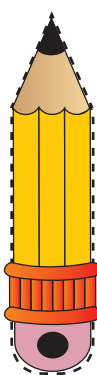




**Clock**

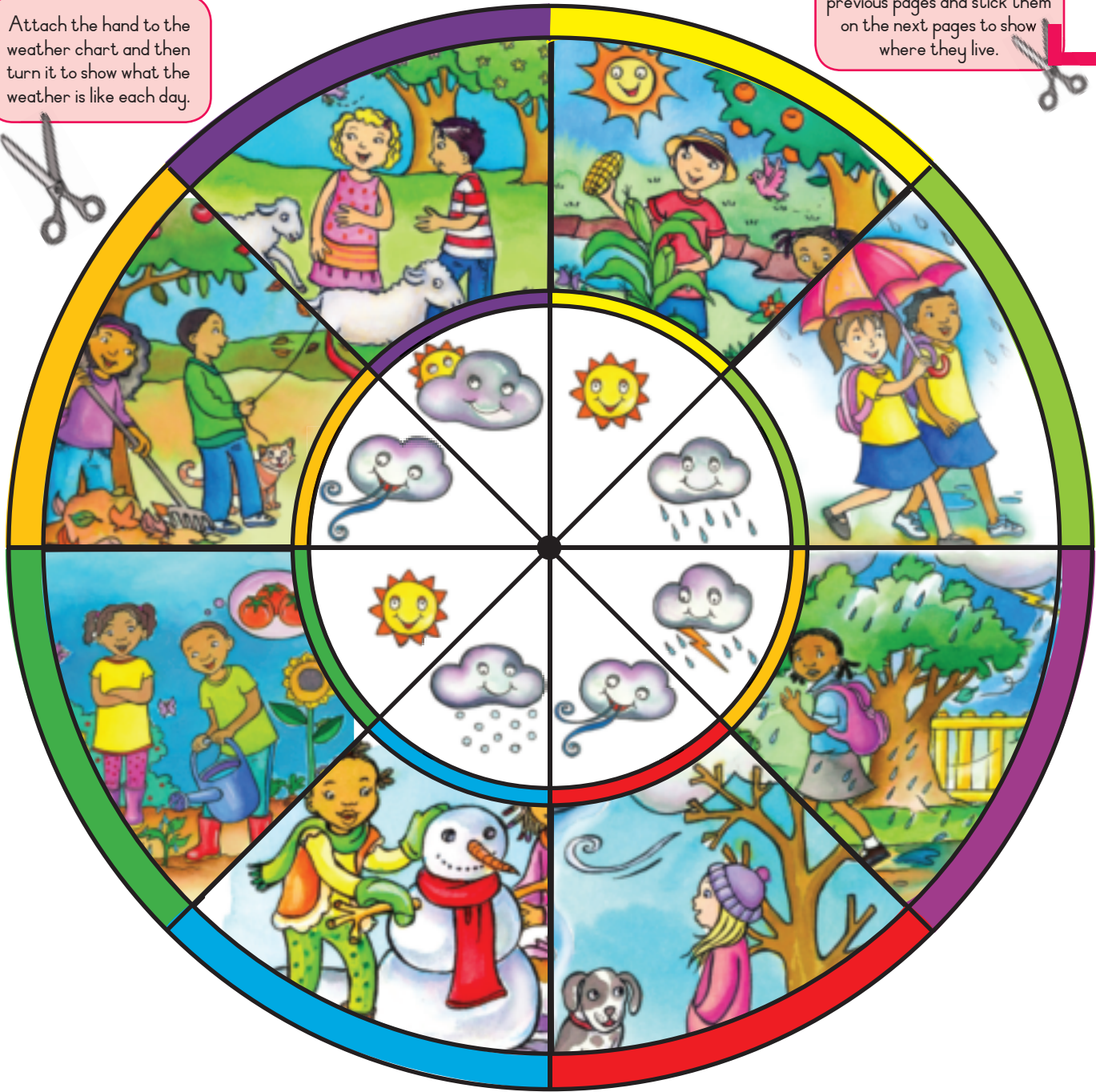
Cut out the clock and then the hands of the clock. Use the clip (a splitpin) to fasten the hands to the clock so that they can turn around. Now use your clock to show your friends the time.

At the same time fasten this hand to the weather clock on the back of the clock.



Attach the hand to the weather chart and then turn it to show what the weather is like each day.

Cut out the animals on the previous pages and stick them on the next pages to show where they live.



# IGreyidi 2



## ngesiNdebele



Incwadi le ngeyaka:

ISINDEBELE

Incwadi

—



**O  
k  
u  
m  
u  
m  
e  
t  
h  
w  
e  
k  
o**

**Isihloko 1: Ziyavulwa iinkolo**

**Ithemu 1: Iimveke 1 - 5**



<b>1 Namukelekile</b> 2
Ukucoca Ukuzwisisa ukufunda Ukufunisela Ukutjengisa okuqakathekileko Ukuzijayeza ukutlola Ukutlola imitjho Ukutjheja amagama
<b>2 Zivuliwe iinkolo</b> 4
Ukugwala isithombe Ukuqedelela imitjho Ukutlola umsebenzi Ukuzithabisa
<b>3 Ijiniifomu Yami</b> 6
Ukuzwisisa isifundo Ukufunisela Ukutjengisa okuqakathekileko Ukuzijayeza ukutlola Ukutlola imitjho Ukutjheja amagama
<b>4 Ijiniifomu Yami</b> 8
Ukugwala isithombe Ukuqedelela ngemininingwana Ukutlola imitjho Umsebenzi wokuzithabisa
<b>5 Umsana omutjha esikolweni</b> 10
Ukwabelana ngokufunda Ukuzwisisa isifundo Ukufunisela Ukutjengisa okuqakathekileko Ukuzijayeza ukutlola Ukutlola imitjho Ukutjheja amagama

<b>6 Siyakwamukela esikolweni</b> 12
Lingisani Ukubuzana nabangani Ukutlola imitjho Ukutlola amagama Ukuzithabisa
<b>7 Imidlalo edlalwa esikolweni</b> 14
Ukufunisela Ukufunda nokuzwisisa Ukufunda nokulalela amatjhada Ukutlola imitjho Ukuzijayeza ukutlola Ukutjheja amagama
<b>8 Ngithanda imidlalo</b> 16
Ukugwala isithombe Ukuqedelela imitjho Ukutlola imitjho Ukuqala isithombe
<b>9 Kufika inese esikolweni</b> 18
Ukuzwisisa kokufundiweko Ukutlola Ukufunda amagama Ukutlola imitjho Ukuzijayeza ukutlola Ukutjheja amagama
<b>10 Nalo-ke inese lithi</b> 20
Ukwakha imitjho Ukuqedelela imitjho Ukuzithabisa
<b>11 Basipha ukudla esikolweni</b> 22
Ukufunisela Ukuzwisisa isifundo

Ukufunda nokulalela amatjhada Ukutlola imitjho Ukutlola imitjho Ukuzijayeza ukutlola Ukutjheja amagama	
<b>12 Siyadla esikolweni</b> 24	
Ukugwala iinthombe Ukukhuluma Ukulebula iinthombe Ukutlola amatshwayo wokufunda nokutlola Ukufaka itshwayo okungilo	
<b>13 Senza umsebenzi wesikolo ekhaya</b> 26	
Ukufunisela Ukuzwisisa kokufundiweko Ukufunda nokulalela amatjhada Ukutlola imitjho Ukuzijayeza ukutlola Ukutjheja amagama	
<b>14 Senza umsebenzi wesikolo ekhaya</b> 28	
Ukulingisa Ukunombora iinthombe Ukutlola amagama	
<b>15 Isihlahlubo</b> 30	
Ukufunisela Ukuzwisisa kokufundiweko Ukufunda nokulalela amatjhada Ukutlola imitjho Ukuzijayeza ukutlola Ukutjheja amagama	
<b>16 Amalanga aqakathekileko</b> 32	
Ukukhuluma: Ukutlola Ukutlola	

**Isihloko 2: Umndeni nabangani**

**Ithemu 1: Iimveke 6 - 8**

<b>17 Imindeni ehlukehlukeneko</b> 34
Ukufunisela Ukuzwisisa kokufundiweko Ukufunda nokulalela amatjhada Ukutlola imitjho Ukuzijayeza ukutlola Ukutjheja amagama
<b>18 Umndeni wakwethu</b> 36
Ukugwala isithombe Ukutlola amagama Ukutlola imitjho ngomndeni Ukuzithabisa
<b>19 Bengiye emtjhadweni</b> 38
Ukuzwisisa kokufundiweko Ukufunda nokulalela amatjhada Ukutlola imitjho Ukuzijayeza ukutlola Ukutjheja amagama
<b>20 Bengisemtjhadweni</b> 40
Ukulingisa Ukutlola nokunombora Ukutlola imitjho Ukuzithabisa
<b>21 Abangani abathembekileko</b> 42
Ukuzwisisa kokufundiweko Ukufunda nokulalela amatjhada Ukutlola imitjho Ukuzijayeza ukutlola Ukutjheja amagama

<b>22 Banjani abangani bami</b> 44
Ukuhlukana ngeenqhema Ukutlola Ukuzithabisa
<b>23 Sithhogomela ifuyosithandwa</b> 46
Ukuzwisisa kokufundiweko Ukufunda nokulalela amatjhada Ukutlola imitjho Ukuzijayeza ukutlola Ukutjheja amagama
<b>24 Iinlwanyana zethu</b> 48
Ukugwala isithombe Ukutlola Ukutlola Ukuzithabisa
<b>25 Sihlwengisa ekhaya</b> 50
Ukuzwisisa kokufundiweko Ukufunda nokulalela amatjhada Ukutlola imitjho Ukuzijayeza ukutlola Ukutjheja amagama
<b>26 Ekhaya</b> 52
Ukugwala isithombe Ukutlola Ukutlola Ukuzithabisa
<b>27 Siyazilula</b> 54
Ukufunisela Ukuzwisisa kokufundiweko Ukufunda nokulalela amatjhada Ukutlola imitjho Ukuzijayeza ukutlola

Amagama atjhejiweko	
<b>28 Imidlalo nokuzithabulula</b> 56	
Ukukhuluma Ukutlola imitjho Ukutlola Ukugwala isithombe Ukuzithabisa Ukutlola imitjho	
<b>29 Sidla ngefanelo</b> 58	
Ukufunisela Ukuzwisisa kokufundiweko Ukufunda nokulalela amatjhada Ukutlola imitjho Ukuzijayeza ukutlola Amagama atjhejiweko	
<b>30 Imbuzi ingesivandeni</b> 60	
Ukulingisa Ukufunda nokunombora Ukutlola imitjho Ukuzithabisa	
<b>31 Ukulekelela abanye</b> 62	
Ukufunisela Ukuzwisisa kokufundiweko Ukufunda nokulalela amatjhada Ukutlola imitjho Ukuzijayeza ukutlola Amagama atjhejiweko	
<b>32 Sisiza abanye</b> 64	
Ukulingisa Ukutlola Ukutlola Ukuzithabisa	



### Isihloko 3: Ikhambo mazombe

### Ithemu 2: Iimveke 1 - 5

<b>33</b>	<b>Iindaba ezimnandi</b>	<b>66</b>
	Ukufunisela Ukuzwisisa kokufundiweko Ukufunda nokulalela amatjhada Ukutlola imitjho Ukuzijayeza ukutlola Ukutjheja amagama	
<b>34</b>	<b>Iindaba ezimnandi</b>	<b>68</b>
	Ukukhuluma Ukugwala isithombe Ukutlola amagama. Ukutlola imitjho Ukuzithabisa	
<b>35</b>	<b>Sizokuya kuphi?</b>	<b>70</b>
	Ukufunisela Ukuzwisisa kokufundiweko Ukufunda nokulalela amatjhada Ukutlola imitjho Ukuzijayeza ukutlola Ukutjheja amagama	
<b>36</b>	<b>Ngifuna ukubona ...</b>	<b>72</b>
	Ukukhuluma Ukuzithabisa Ukutlola imitjho Ukutlola	
<b>37</b>	<b>Ibhesi ikhamba emaplasini</b>	<b>74</b>
	Ukufunisela Ukuzwisisa kokufundiweko Ukufunda nokulalela amatjhada Ukutlola imitjho Ukuzijayeza ukutlola Amagama atjhejiweko	
<b>38</b>	<b>Amaplasini namahlathi</b>	<b>76</b>
	Ukuzithabisa	

	Ukutlola imitjho Ukutlola Ukutlola Ukuzithabisa	
<b>39</b>	<b>Ukutjhayela edorobheni</b>	<b>78</b>
	Ukufunisela Ukuzwisisa kokufundiweko Ukufunda nokulalela amatjhada Ukutlola imitjho Ukuzijayeza ukutlola Ukutjheja amagama	
<b>40</b>	<b>USipoti ubalekile phela</b>	<b>80</b>
	Ukulingisa Ukutlola Ukutlola Ukuzithabisa	
<b>41</b>	<b>Iinlwana ezikulu ezihlanu</b>	<b>82</b>
	Ukufunisela Ukuzwisisa kokufundiweko Ukufunda nokulalela amatjhada Ukutlola imitjho Ukuzijayeza ukutlola Amagama atjhejiweko	
<b>42</b>	<b>Iinlwana ezandileko</b>	<b>84</b>
	Ukugwala Ukutlola imitjho Ukutlola Ukuzithabisa	
<b>43</b>	<b>Ibhesi iya elwandle</b>	<b>86</b>
	Ukufunisela Ukuzwisisa kokufundiweko Ukufunda nokulalela amatjhada Ukutlola imitjho Ukuzijayeza ukutlola Ukutjheja amagama	

<b>44</b>	<b>Siselwandle</b>	<b>88</b>
	Ukutlola Ukutlola Ukutlola Ukutlola	
<b>45</b>	<b>Sibuyela ekhaya</b>	<b>90</b>
	Ukufunisela Ukuzwisisa kokufundiweko Ukufunda nokulalela amatjhada Ukutlola imitjho Ukuzijayeza ukutlola Ukutjheja amagama	
<b>46</b>	<b>Ukutathatha ikhambo</b>	<b>92</b>
	Ukugwala Ukutlola imitjho Ukutlola Ukuzithabisa	
<b>47</b>	<b>Sesingetlasini godu</b>	<b>94</b>
	Ukufunisela Ukuzwisisa kokufundiweko Ukufunda nokulalela amatjhada Ukutlola imitjho Ukuzijayeza ukutlola Ukutjheja amagama	
<b>48</b>	<b>Sisekhaya godu</b>	<b>96</b>
	Ukukhuluma Ukutlola Ukutlola: Ukuzithabisa	

### Isihloko 4: Ibhoduluko lethu

### Ithemu 2: Iimveke 6 - 8

<b>49</b>	<b>Liyana</b>	<b>98</b>
	Ukufunisela Ukuzwisisa kokufundiweko Ukufunda nokulalela amatjhada Ukutlola imitjho Ukuzijayeza ukutlola	
<b>50</b>	<b>Isinanja</b>	<b>100</b>
	Ukufunisela Ukutlola Ukufunda Ukuzithabisa Ukutlola	
<b>51</b>	<b>Ukukhithika kwesinanja</b>	<b>102</b>
	Ukufunisela Ukuzwisisa kokufundiweko Ukutlola Ukufunda nokulalela amatjhada Ukutlola Ukutlola	
<b>52</b>	<b>Emva kwesinanja nokuduma</b>	<b>104</b>
	Ukufunisela nokunombora iinthombe Ukutlola Ukutlola Ukuzithabisa	
<b>53</b>	<b>Sengikhe ngalibona irhwaba</b>	<b>106</b>
	Ukufunisela Ukufunda Ukuphendula imibuzo Ukufunda amagama Ukutlola	

<b>54</b>	<b>Irhwaba elincani</b>	<b>108</b>
	Ukugwala Ukutlola imitjho Ukutlola Ukutlola Ukutlola	
<b>55</b>	<b>Iinkhathi zomnyaka</b>	<b>110</b>
	Ukufunisela Ukuzwisisa kokufundiweko Ukuphendula imibuzo Ukufunda amagama Ukutlola imitjho Ukutlola Ukutjhejwa kwamagama	
<b>56</b>	<b>Iinkhathi ezine zomnyaka</b>	<b>112</b>
	Ukukhuluma Ukutlola Ukutlola Ukukhuluma Ukuzithabisa	
<b>57</b>	<b>Lingana nanhlenje</b>	<b>114</b>
	Ukukhuluma Ukufunda Ukutlola Ukufunda Ukutlola: Ukutjhejwa kwamagama	
<b>58</b>	<b>Sihlola ubujamo bezulu</b>	<b>116</b>
	Ukugwala Ukutlola Ukutlola Ukutlola	

<b>59</b>	<b>Sikhathi bani?</b>	<b>118</b>
	Ukufunisela Ukuzwisisa kokufundiweko Ukutlola Ukufunda Ukutlola Ukutjhejwa kwamagama	
<b>60</b>	<b>Sitjho isikhathi</b>	<b>120</b>
	Ukukhuluma Ukutlola Ukutlola Ukuzithabisa	
<b>61</b>	<b>Okhunye ngesikhathi</b>	<b>122</b>
	Ukufunisela Ukuzwisisa kokufundiweko Ukutlola Ukufunda Ukutlola Ukuzwisisa kokufundiweko	
<b>62</b>	<b>Kwenzeke sikhathi bani?</b>	<b>124</b>
	Ukumadanisa Ukutlola Ukuzithabisa	
<b>63</b>	<b>Izembatho ezifaneleko</b>	<b>126</b>
	Ukufunisela Ukuzwisisa kokufundiweko Ukutlola Ukufunda Ukutlola Ukutjhejwa kwamagama	
<b>64</b>	<b>Iphaphandaba lamu</b>	<b>128</b>
	Ukukhuluma Ukuzitholela	





Asifunde



UThabo

Thina besiye  
elwandle siyokududa.



UBen

Bengiye kwagogo.

Sesibuyele esikolweni.  
Bekamade amalanga  
wokuphumula.

Lotjha Ben,  
Nawe Thabo lotjha.

Lotjha Musa.

Bewuye kuphi ngamalanga  
wokuphumula?

U-Ann



Besisekhaya soke.



Hawu hawu!

USipoti

UJabu



Besisekhaya. Uphi uSipho noMusa noJabu? Sifuna ukugijima nabo.



Asitlole

Funda umutjho uzaliselele ngo -Iye ✓ nofana Awa ✗.

Babuyile esikolweni aboJabu.

UJabu uye wayokududa ngamalanga wokuphumula.

UMusa gade asekhaya.



Isilulu magama

Funda amagama ulalele amatjhada. Ngemuva kwalapho bese uthatha amagama amabili wakhe ngawo imitjho ozoyitlolela ngencwadini yakho.

ugogo	duda	ekhaya	lotjha
isigodo	dela	khula	tjhisa
goba	yidala	khuluma	itjhumu

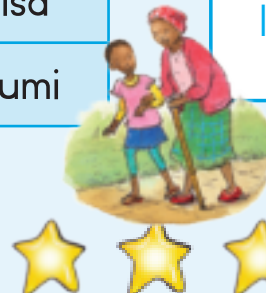
Amagama atjhejiweko

made  
esikolweni  
lotjha  
saya



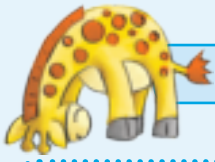
Asitlole

Zijayeze amaledere alandelako. Kwanjesi tlola imitjho ngencwadini yakho ngokusebenzisa amagama angebhoksini lesilulu-magama.



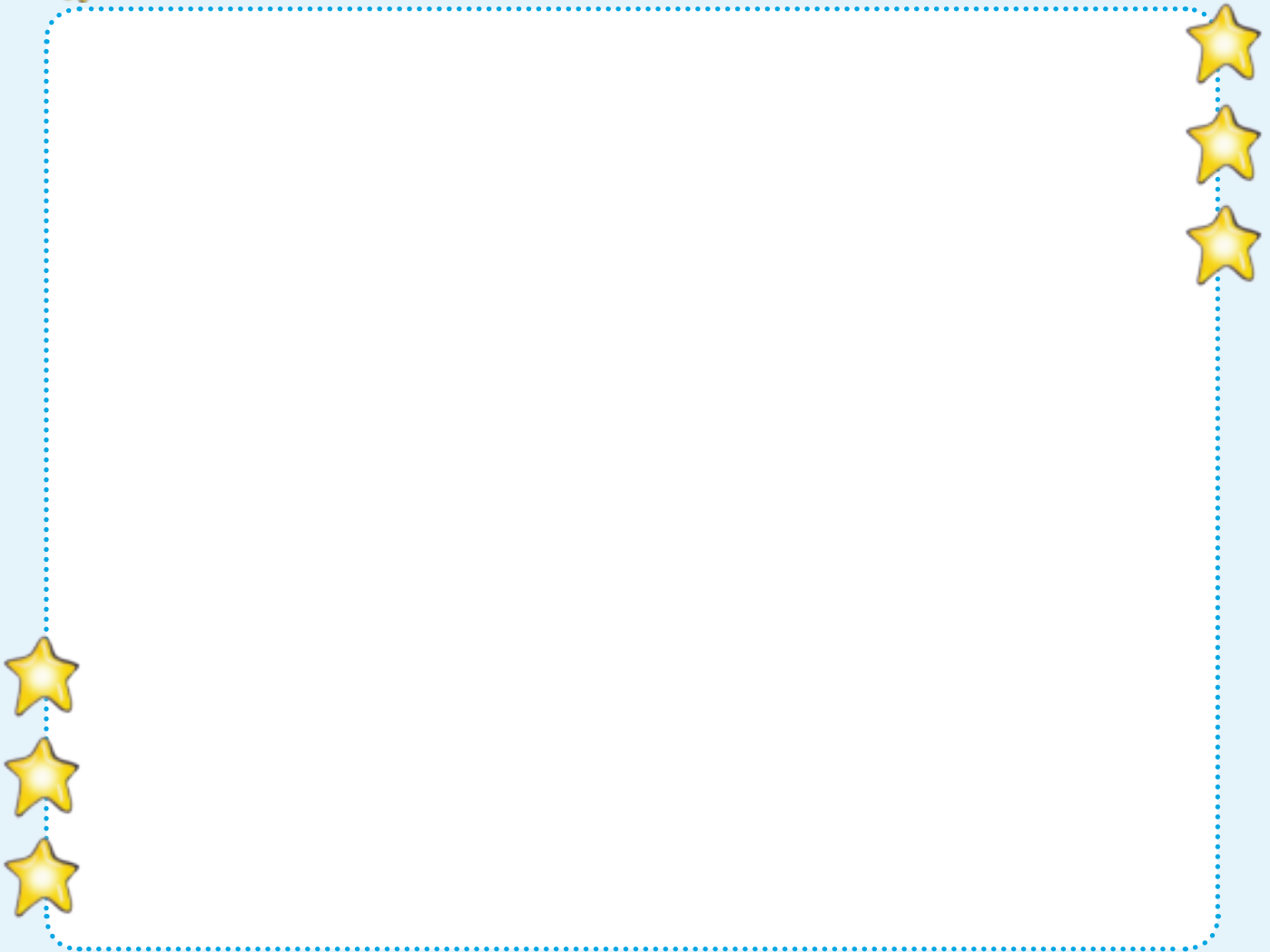
A A

a a



Asenzi lokhu

Gwala isithombe utjengise lokho ogade ukwenza ngamalanga wokuphumula.



Asitlola

Khethe igama elilodwa uqedelele ngalo umutjho.

besifuna	_____ kwagogo.
saya	_____ aboSipoti noMusa?
bebakuphi	_____ ukugjijimisana nabo.



Asitlola

Tlola imitjho emithathu ngalokho obewukwenza ngamalanga wokuphumula. Sebenzisa amanye wamagama alandelako azokusiza.

emalangeneni wokuphumula

uSipoti

siye

ilwandle

duda

ekhaya




Ukuzithabisa

Sewubuyile esikolweni. Uzokwenza ini iveke le? Qedelela ngamalanga weveke. Gwala isithombe sento ozoyenza ngelinye nelinye ilanga. Yazisa umngani.

**NgoMvulo ngizo ...**

**NgoSondo ngizo ...:**



NgoMvulo



NgeLesibili



\_\_\_\_\_

\_\_\_\_\_



NgeLesihlanu



\_\_\_\_\_



NgoSondo



Asifunde

Utitjhere



Soke sembatha ijinifomu yesikolo.  
Kungabe isakulingana ijinifomu yakho na?

UBen



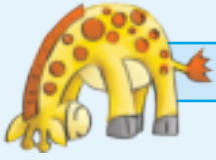
Ijinifomu yami yincani.  
Kufanele ngimbathe yakamnakwethu.

UBongi



Mina nginejunifomu etja. Ikulu khulu.  
Umma uthi ijinifomu le kufanele ingilingane  
ngibe ngifike egreyidini lesi-5.





Asenzi lokhu

Gwala isithombe sakho lapha wembethe ijinifomu yakho.



Asitlole

Qedelela ikarada elilandelako bese ugwala isithombe sakho.

Ibizo lami ngingu \_\_\_\_\_.

Ngifunda iGreyidi \_\_\_\_\_.

Ngineminyaka \_\_\_\_\_ ubudala.

Ibizo lesikolo sami \_\_\_\_\_.



Ilanga:



Asitlola

Tlola imitjho emithathu ngejinifomu yakho. Sebenzisa amanye wamagama alandelako azokusiza.

ijezi

isiketi

ithayi

imbaji

amanyathelo

irhembe

ibhrugu

amakowusu




Ukuzithabisa

Tlola ibizo lesambatho ngasinye bewutjengise ngomuda.



ithayi



Utijhere: Tlikitla

Ilanga



Asifunde



uJimi

NginguJimi. Ngimsana omutjha kilesi isikolo. Ngizijamele ngingedwa. Bengifunda kesinye isikolo.

“Ngingajabula ukuba nomngani engingadlala naye,” kutjho uJimi.



uSipoti



U-Ann

U-Ann noSipoti babona uJimi ajame yedwa. Baya kuye.

“Lotjha Jimi. Ufuna ukudlala nathi?” kubuza uMusa.



U-Ann

“Ungadlala nathi,” kutjho u-Ann.

UJimi ujabulile kwanjesi ngombana sekazokudlala no-Ann noSipoti.



UJimi



Asitlole

Funda umutjho uzaliselele ngo-Iye ✓ nofana Awa ✗.

UJimi msana omutjha esikolweni.	
U-Ann nosipoti bayokukhuluma noJimi.	
UJimi uyqjabula.	



Isilulu magama

Funda amagama ulalele amatjhada. Ngemuva kwalapho bese uthatha amagama amabili wakhe ngawo imitjho ozoyitlolela ngenwadini yakho.

jabula	funda	dlala	njalo
ijuzi	linda	dlula	njenganje
ijasi	indawo	idla	inja



Amagama atjhejiweko

kuye  
kutjho  
kesinye



Asitlole

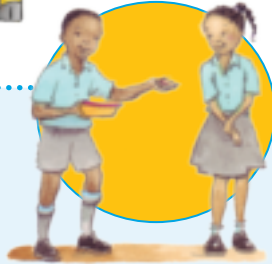
Zijayeze amaledere alandelako. Kwanjesi tlola imitjho ngenwadini yakho ngokusebenzisa amagama angebhoksini lesilulu-magama.



C C c c



**Asenzi lokhu**



Esiqhemeni senu. Lingisani indlela eningamukela ngayo umsana namkha umntazana omutjha ngetlasini.



**Asikhulume**

Buza abangani bakho abahlanu kobana bona bangathanda ukufunda ziphi iincwadi bese ukhalara ngaphakathi kwesiyingi esiseduze kwencwadi.



○ ○ ○ ○ ○



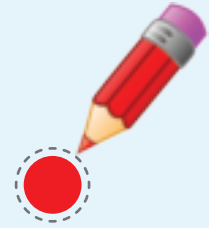
○ ○ ○ ○ ○



○ ○ ○ ○ ○



○ ○ ○ ○ ○



Ngijiphi incwadi ethandwa bangani bakho khulu?

Ngijiphi incwadi engathandwa bangani bakho khulu?



**Asitlole**

Tlola imitjho emibili utjengise ihlonipho ebantwini abakhulu ngokukhetha amagama amabili kilawa alandelako:

ingwani

ukulotjhisisa

ukusabela

ukubiza

ngegama

ukulalela

Blank writing area with horizontal lines.

Ilanga:



Asitlola

Tlola amagama alandelako ngemakhowutjhini wamatjhada okungiw.

itjumayelo

ukudla

itjhuba

umtjhagalo

idlanga

ukuhlabisa

tlharulula

umhlabelo

tjhumeqa

itja

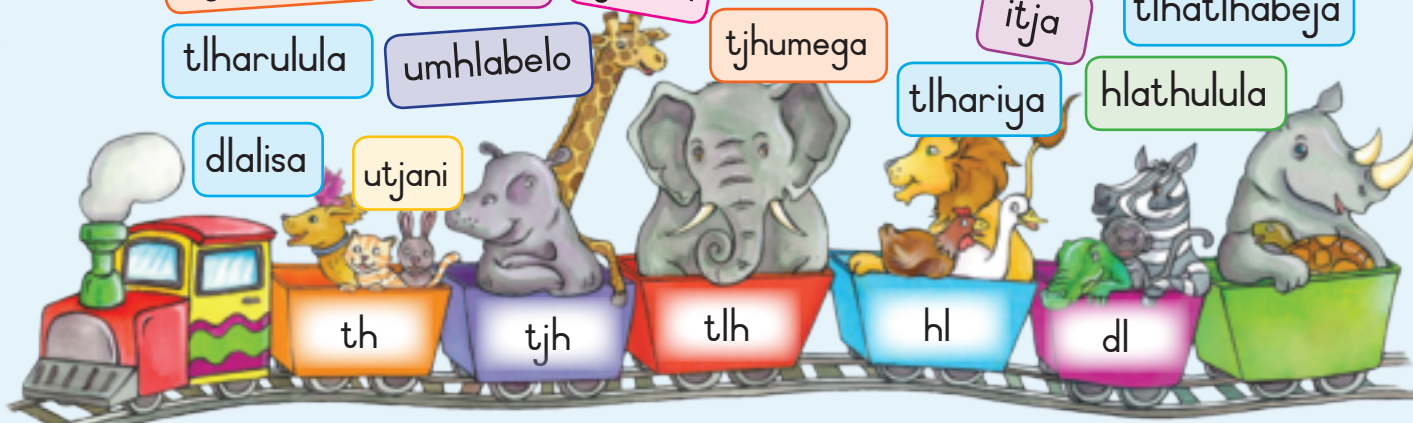
tlhatlhabeja

dlalisa

utjani

tlhariya

hlathulula



th

tjh

tlh

hl

dl

Blank box for writing the word 'th'.

Blank box for writing the word 'tjh'.

Blank box for writing the word 'tlh'.

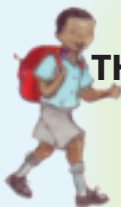
Blank box for writing the word 'hl'.

Blank box for writing the word 'dl'.



Ukuzithabisa

Siza umsana omutjha lo akwazi ukuthola indlela eya esikolweni. Tjela abangani bakho ngeendawo azidlulileko.

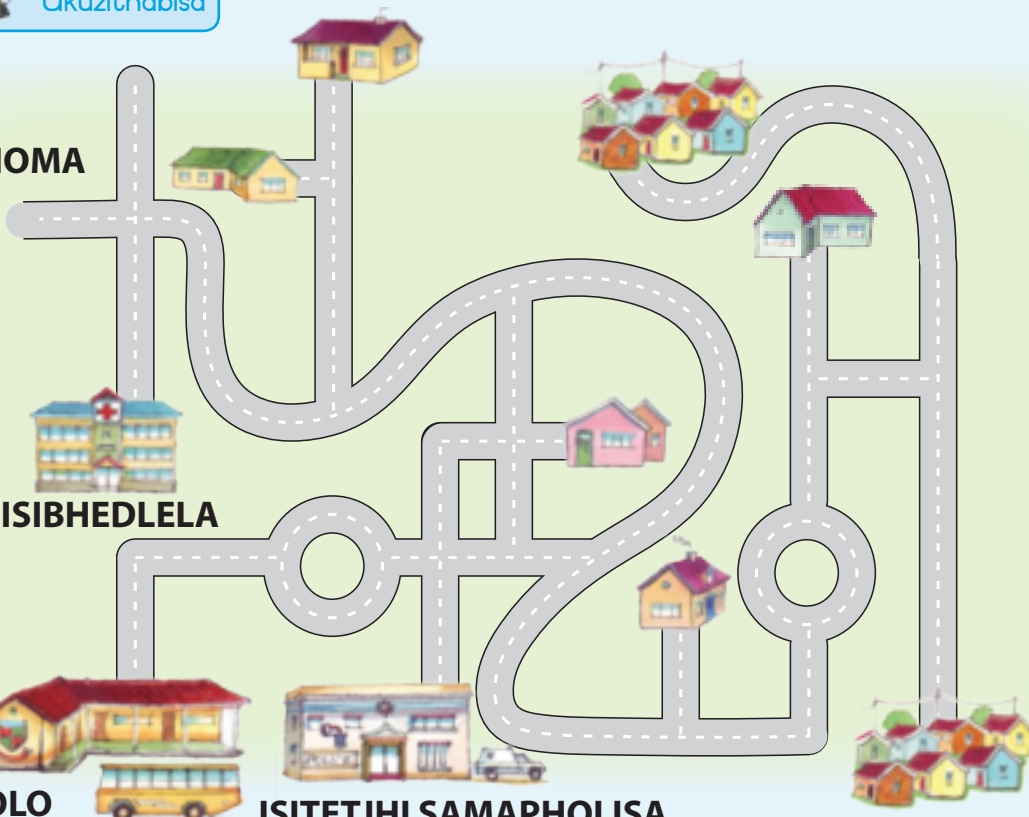


THOMA

ISIBHEDLELA

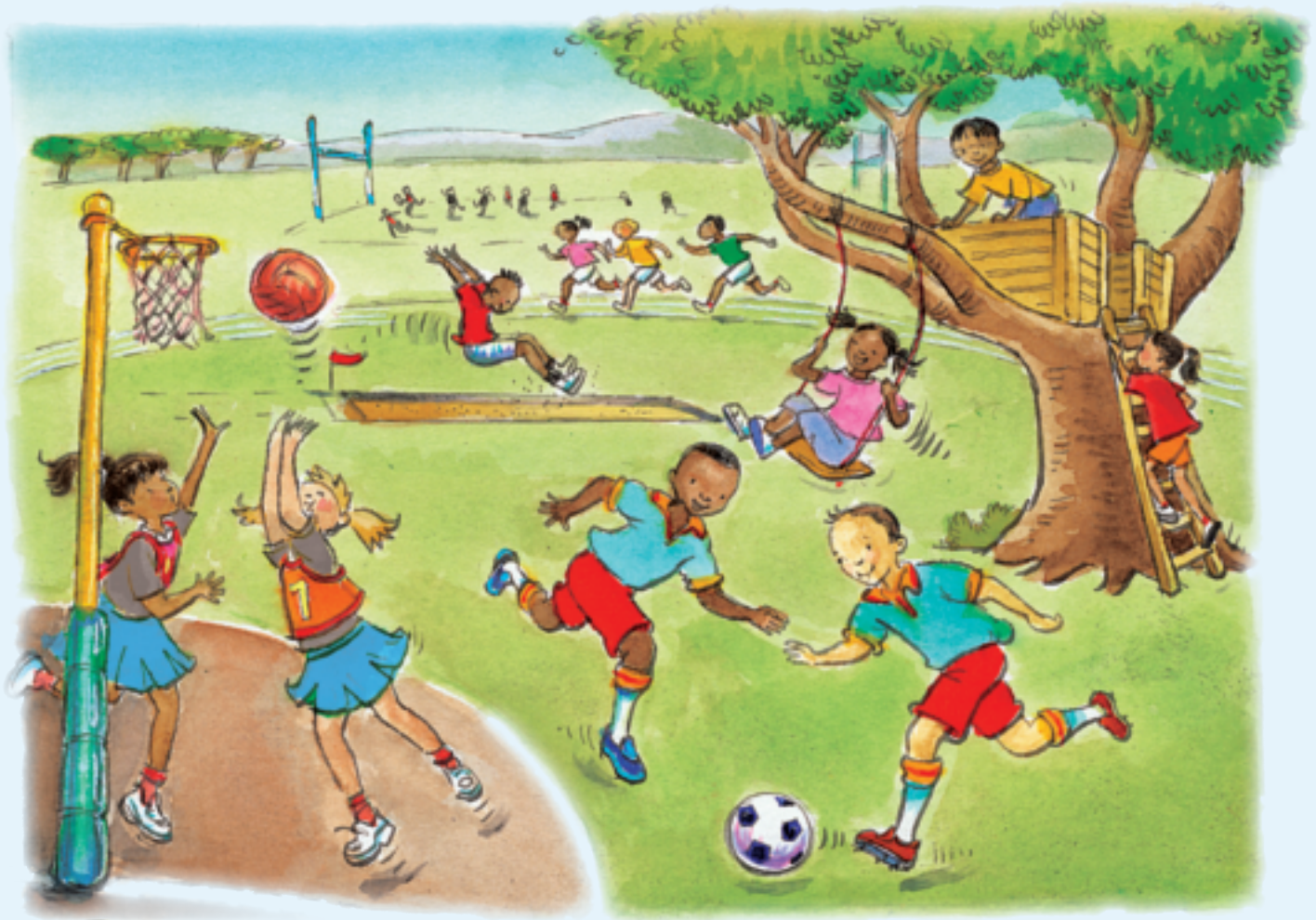
SIKOLO

ISITETJHI SAMAPHOLISA



Utitjhere: Tlikitla

Ilanga



Asifunde



U-Ann

Ngithanda  
ibholo yezandla.



UBongi

Ngithanda umjinko.  
Kufanele ngingawi  
nangisemjinkweni.  
Ngiphezulu emthini.  
Kufanele ngiqinisekise  
ngingawi.

UJimi



Sithanda ibholo  
erarhwako.

Ngithanda  
ukweqa umeqo  
wobude.



UJabu



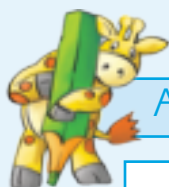
Ngithanda nokweqa.

UDodo



uMbali

UMbali ufuna ukudlala. Ukhubazekile. Akakghoni ukukhamba. Udlala nenja yakhe. Sithanda ukukhuluma naye.



Asitlole

Funda umutjho uzaliselele ngo-Iye ✓ nofana Awa ✗.

UMbali ukhamba nenja.	
UJabu uthanda ibholo yezandla.	
UBongi noMusa bathanda ibholo erarhwako.	



Isilulu magama

Funda amagama ulalele amatjhada. Ngemuva kwalapho bese uthatha amagama amabili wakhe ngawo imitjho ozoyitlolela ngenwadini yakho.

into	izitho	imbuzi	inyoni
intethe	thatha	imbongi	inyoka
intamo	thela	umbuzo	inyosi



Amagama atjhejiweko

yakhe  
nenja  
akuvumi

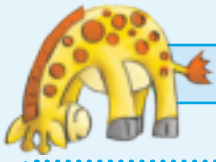


Asitlole

Zijayeze amaledere alandelako. Kwanjesi tlola imitjho ngenwadini yakho ngokusebenzisa amagama angebhoksini lesilulu-magama.

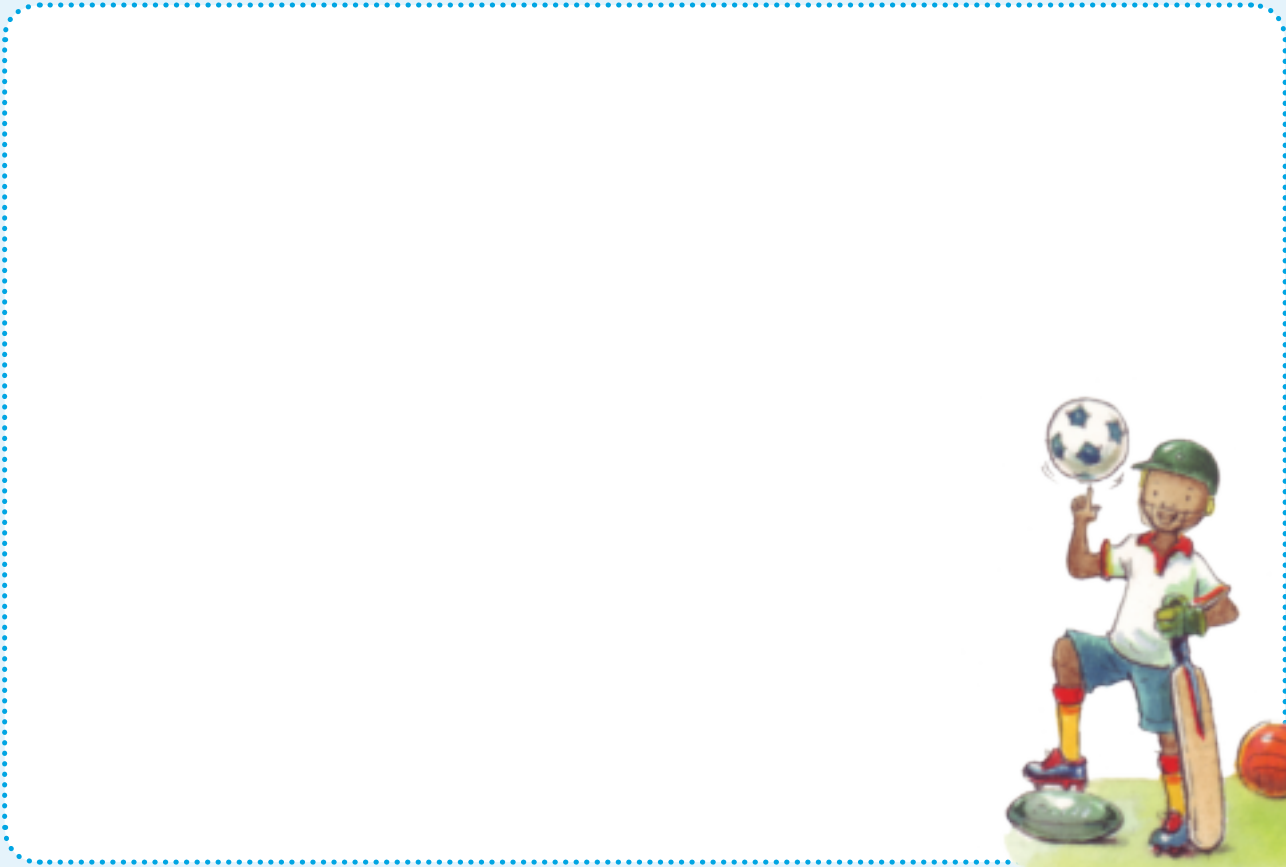


D D d d



Asenzi lokhu

Gwala isithombe somdlalo owuthandako.



Asitole

Qedelela imitjho ngokusebenzisa amagama alandelako.

ikhekhe

erarhwako

ukugijima

inetbholo

Ngithanda

Angithandi

Ngithanda

Angithandi ibholo



Asitlola

Tlola imitjho emibili ngomdlalo owuthandako usebensize amagama alandelako. Sebensisa amanye wamagama alandelako azokusiza.

gijima

dlala

thanda

umdlalo

yeqa

zithabise




Asitlola

Badlala muphi umdlalo? Qala isithombe bewuzungelezele ipendulo okungiyiyo.

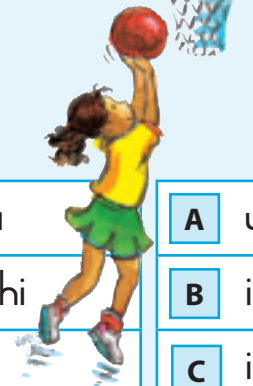


A itenesi

B ibholo erarwaka

C umakhakhulararhwe

D ikhrikethi



A ukududa

B ikhrikethi

C ukweqa

D ibholo yezandla



A umakhakhulararhwe

B ikhrikethi

C ijudo

D ibholo yezandla



A itenesi

B ikhrikethi

C ukududa

D ukugijima



A itenesi

B umakhakhulararhwe

C ibholo yezandla

D ukududa



A ukududa

B ikhrikethi

C umakhakhulararhwe

D ibholo yezandla



Asifunde

Inese ifikile esikolweni sethu izosihlahluba amehlo.

UMariya utlhoga amarhalasi wamehlo. Akaboni kuhle. Njalo uhlala ngaphambili. Kufanele ahlale ngaphambili etlasini.





UMusa

Inese ibawa kobana sifunde okutlolwe ebodeni.

UDodo akaboni emehlweni. Siyamsiza bonyana akwazi ukukhamba. Unencwadi yokufunda naye. Uyakghona ukubona kude? Inese izele ukuzokuhlaluba amehlo wethu.



Asitlola

Buyelela ufunde indatjana bese uzungelezela iledere elinependulo okungiyi.

Inese izosihlahluba _____ esikolweni?
A izandla
B amehlo
C iindlebe
D iinyawo

Ngubani ozokutlhoga ukunikelwa amarhalasi wamehlo?
A NguMary
B NguJabu
C NguSusan
D NguMandu

Ngubani ovakatjhele isikolo?
A Ngudorhoreda
B Bacimi bomlilo
C Linese
D Mtjhayeli we-ambulensi

Indatjana engehla le ingafanelwa ngisiphi isihloko?
A UMANDU uphiwa amarhalasi wamehlo.
B Udorhodera uvakatjhe esikolweni.
C Sihlahluba amehlo wabafundi.
D Uyeza na?



Isilulu magama

Funda amagama ulalele amatjhada. Ngemuva kwalapho bese uthatha amagama amabili wakhe ngawo imitjho Ngemuva ngencwadini yakho.

hlala	iimpelesi	ikwasi	ilwazi
hlaba	iimpahla	ikwekwezi	ubulwelwe



Amagama atjhejiweko

ilanga wenzile yenza phasi



Asitlola

Zijayeze amaledere alandelako. Kwanjesi tloa imitjho ngencwadini yakho ngokusebenzisa amagama angebhoksini lesilulu-magama.



E E e e



Asenzeni lokhu

Qala iinthombe bese utjela umngani bonyana inese lithe wenze ini.



Hlamba izandla.

Hlamba  
amazinyo.Yidla iinthelo  
nemirorho.

Lala ngesikhathi.



Asitlola

Tlola imitjho ibe mithathu ngalokho inese elithe kwenziwe.

Kufanele ngi

Kufanele ngi

Kufanele ngi



Asitlola

Qedelela imitjho ngokusebenzisa amagama elandelako.

ukududa

ukudansa

ukutjhayela

ukuvuma

ukupheka

Angikwazi

Ngiyakwazi

Angikwazi

Ngiyakwazi



Ukuzithabisa

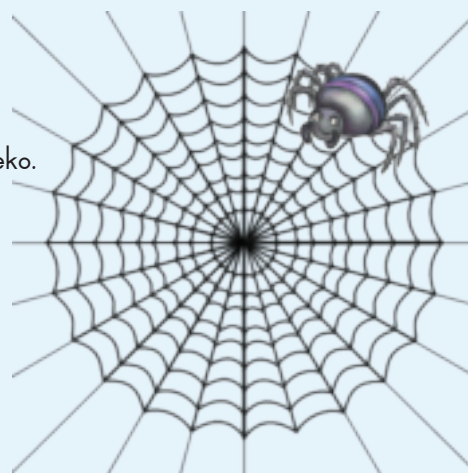
Madanisa amagama neenthombe ezifaneleko.

inese

ichibi

ifengwana

ubulembu





Asifunde

Funda indatjana bese uzungelezele amagama anetjhada dl.



U-Ann

Sijabulile. Sinikelwa ukudla esikolweni.  
Umma usiphekela ukudla okunepilo.

Siyalinda bonyana siphawe ukudla.  
UBen uyakufuna naye ukudla



UBen



UDodo uthanda inyama.

UNomsa uyagula.  
Akafuni ukudla namhlanje.

Uyayithanda imirorho?



UNomsa



Asitlola

Funda umutjho uzaliselele ngo -Iye ✓ nanyana Awa ✗.

UNomsa uyagula.	
USipho uthanda inyama.	
UThami naye ufuna ukudla.	



Isilulu magama

Funda amagama ulalele amatjhada. Ngemuva kwalapho bese uthatha amagama amabili wakhe ngawo imitjho ozoyitlola ngencwadini yakho.

ukwala	iimpoto	idwendwe	idla
ukwakha	ipompi	lodwa	dlala
ukwazi	iimpukani	yedwa	ukudla



Amagama  
atjhejiweko  
sijabulile  
inyama  
ukuphiwa



Asitlola

Zijayeze amaledere alandelako.  
Kwanjesi tlola imitjho ngencwadini yakho ngokuthi usebenzise amagama angebhoksini lesilulu-magama.



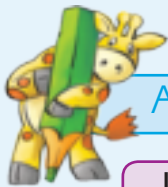
F F f f



Asenzi lokhu

Gwala isithombe esikhambisana negama onikelwe lona:

okunephunga	okunambithekako	okuzwakalako nawukuthintako
okubonakalako		okuzwakalako



Asitlola

Tlola igama elifaneleko eduze kokunye nokunye ukudla.

- uburotho
- itjhizi
- inyama
- amaqanda
- ifesi
- ihabhula
- amabhontjisi
- ikhekhe
- ipuphu



Ilanga:



Asitlole

Buyelela utlole imitjho le usebenzise amatshwayo wokufunda nokutlola okungiwu.



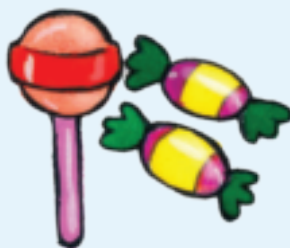
ujabu uthanda itjhizi
<b>UJ</b> abu uthanda itjhizi 
ubongi udla inyama ngamalanga
uyawathanda amabhontjisi
awa ngiwise amaqanda



Ukuzithabisa

Faka umbala esikhaleni sokudla okuthandako.

Yenza okufanako ukuze utjengise bonyana umngani wakho uthanda ini.



	amatjhipsi	ikhabitjhi	ikhekhe	amaswidi	umrorho
Ngithanda					
Umngani wami uthanda					

Utijhere: Tlikitla

Ilanga



Asifunde

Ibizo lami nginguDodo.  
Angikuthandi ukwenza  
umsebenzi wesikolo ekhaya.

Angithandi ukuhlala ilanga loke.  
Ngifuna ukudlala njalo.

Utityhere uthi sifanele sifunde  
ngamalanga woke nalokha  
sisekhaya.



UDodo



Uthi kumele ngenze umsebenzi wesikolo ngemuva kokudlala ibholo erarhwako.

Ngithanda ukurarha ibholo ngigijime. Umma uyaqala kobana ngiyawenza umsebenzi wami wesikolo na?

Ngiyamfundela bese uhlola umsebenzi wami.



Asitlola

Funda umutjho uzaliselele ngo-Iye ✓ nofana Awa ✗.

Uyadlala atlola umsebenzi wesikolo.

UDodo uthanda umsebenzi wesikolo.

Uyise uhlola umsebenzi wakhe.



Isilulu magama

Funda amagama ulalele amatjhada. Ngemuva kwalapho bese uthatha amagama amabili wakhe ngawo imitjho ozoyitlola ngencwadini yakho.

yenza	umsele	iinkomo	yinye
amanzi	umsila	iinkuni	inyama
isithunzi	emsamo	iinkunzi	inyosi



Amagama atjhejiweko

uhlola  
ngenze  
yini



Asitlola

Zijayeze amaledere alandelako. Kwanjesi tlola imitjho ngencwadini yakho ngokusebenzisa amagama angebhoksini lesilulu-magama.



G G

g g



Asenzeni lokhu



Hlukanani ngababili. Lingisani uDodo lokha nakangafuniko ukwenza umsebenzi wesikolo nakesekhaya. Omunye akabe ngiloyo ongafuniko. Akamtjele kobana kuqakathekile ngani ukwenza umsebenzi wesikolo ekhaya.



Asikhulume

Nombora iinthombe ezilandelako ukuze zilandelana mana ngendlela ezenzeka ngayo. Ngemuva kwalapho, zitlamele indatjana ozoyicocela umngani wakho.



3



2



1

1 \_\_\_\_\_

2 \_\_\_\_\_

3 \_\_\_\_\_

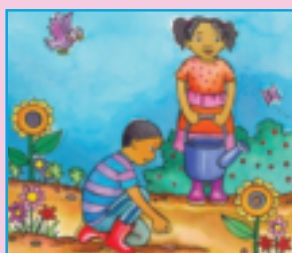


1 \_\_\_\_\_

2 \_\_\_\_\_

3 \_\_\_\_\_

Ilanga:



1 \_\_\_\_\_

2 \_\_\_\_\_

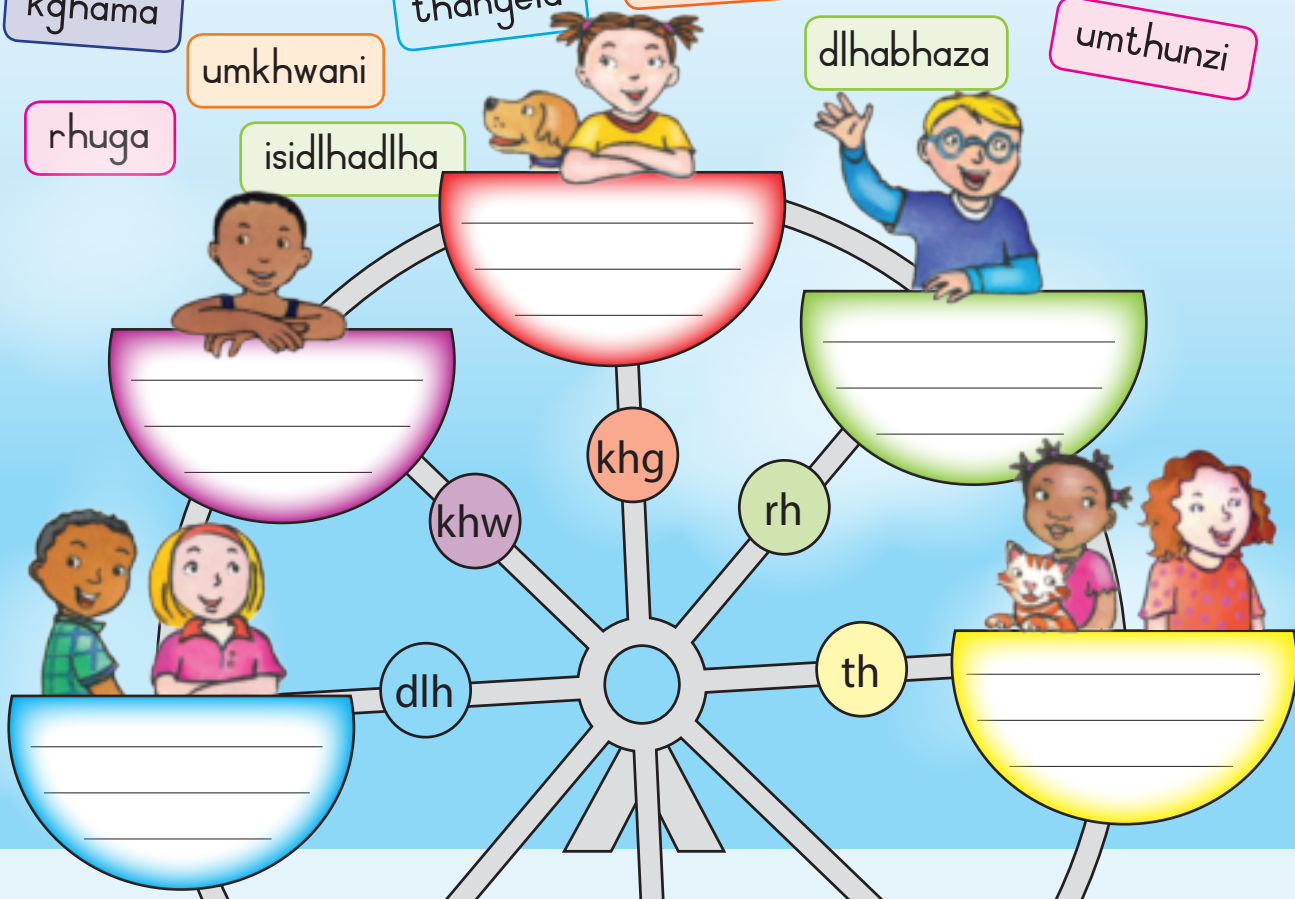
3 \_\_\_\_\_



Asitlole

Tlola amagama alandelako ngemindenini yamatjhada enembako.

- umkhwenyana
- rhuhla
- amadlharuma
- ukghari
- kghakghathela
- isikhwama
- rhurhubisa
- thuthumba
- kghama
- thanyela
- dlhabhaza
- umthunzi
- umkhwani
- rhuga
- isidlhadlha





Asifunde

Funda indatjana bese uzungezelele amagama anetjhada t!.



Namhlanje amalanga ama-20  
kuMatjhi.

Sitlola iinhlahlubo.

USipho uhlezi phasi uyasiqala.

Ngiyakwazi ukufunda  
nokutlola ngebanga lokobana  
ngenza umsebenzi wesikolo  
njalo ekhaya.



UJimi

Utityhere uthi umsebenzi wami muhle.

Ukuhlolwa zingilekelela kobana utityhere akwazi ukungisiza.

Ngilinga ngamandla ukusebenza kuhle esikolweni.



Asitlola

Funda umutjho uzaliselele ngo-Iye ✓ nanyana Awa ✗.

Itlasi litlola ukuhlolwa.

USipho akasabi.

Ukuhlolwa kulekelela kobana utityhere akwazi ukusiza abafundi.



Isilulu magama

Funda amagama ulalele amatjhada. Ngemuva kwalapho bese uthatha amagama amabili wakhe ngawo imitjho ozoyitlola ngenwadini yakho.

tlola	inyama	amalanga	ithunzi
tlebhula	inyawo	ingubo	isenzo
tlikitla	inyanga	ngena	amanzi



Amagama atjhejiweko

iza  
kghona  
buya



Asitlola

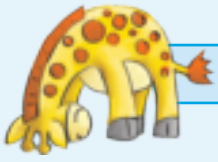
Zijayeze amaledere alandelako.

Kwanjesi tlola imitjho ngenwadini yakho ngokusebenza amagama angebhoksini lesilulu-magama.



H H

h h



Asenzi lokhu

## Ikhhalenda

Coca nabangani bakho kobana anini amalanga wabo wamabeletho. Zalisa amabizo wabo enyangeni efaneleko ekhhalendeni.



Asitlola

Buza abangani abane kobana anini amalanga wabo wamabeletho bese utlola amalanga lawo manqophana namabizo wabo.

Ibizo lomngani	Ilanga lamabeletho
UBongi	15 Arhostesi



Asitlola

Tlola ilanga lakho lamabeletho.

Ilanga

Inyanga

Ilanga:

# ★ Ikhalenda yelenga lamabeletho ★



Utijhere: Tlikitla

Ilanga



Asifunde



Mncani umndeni wekhabo  
lakaMusa.  
Umndeni wakoJabu mkhulu.  
Ekhaya siyalalelana.  
Ekhabo lakaJabu kunogogo.



USipoti

Komunye umndeni akunamma komunye akunababa.  
Asibasizeni.

USipoti yinja yami. Usekhaya. Ufuna lokhu nalokhuya.

Umndeni lo unokatsu kwaphela. Abanye abantu  
banabokatsu, iimfesi nezimvu njengefuyosithandwa.



Asitlole

Funda umutjho uzaliselele ngo -Iye ✓ nofana Awa ✗.

Mncani umndeni wekhabo lakaMusa.

Ekhabo laka Jabu kunomndeni omkhulu.

USipoti uyifuyosithandwa.



Isilulu-magama

Funda amagama ulalele amatjhada. Ngemuva kwalapho bese uthatha  
amagama amabili wakhe ngawo imitjho ozoyitolela ngencwadini yakho.

khokhoba	yena	ugogo	susa
khula	yona	goba	sala
yakha	iyoyo	geda	sika

Amagama  
atjhejiweko

wami  
banobaba  
banomma



Asitlole

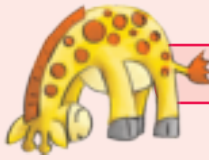
Zijayeze amaledere alandelako.

Kwanjesi tlola imitjho ngencwadini yakho ngokusebenza  
amagama angebhoksini lesilulu-magama.



I I i i

# Umndeni wakwethu



**Asenzeni lokhu**

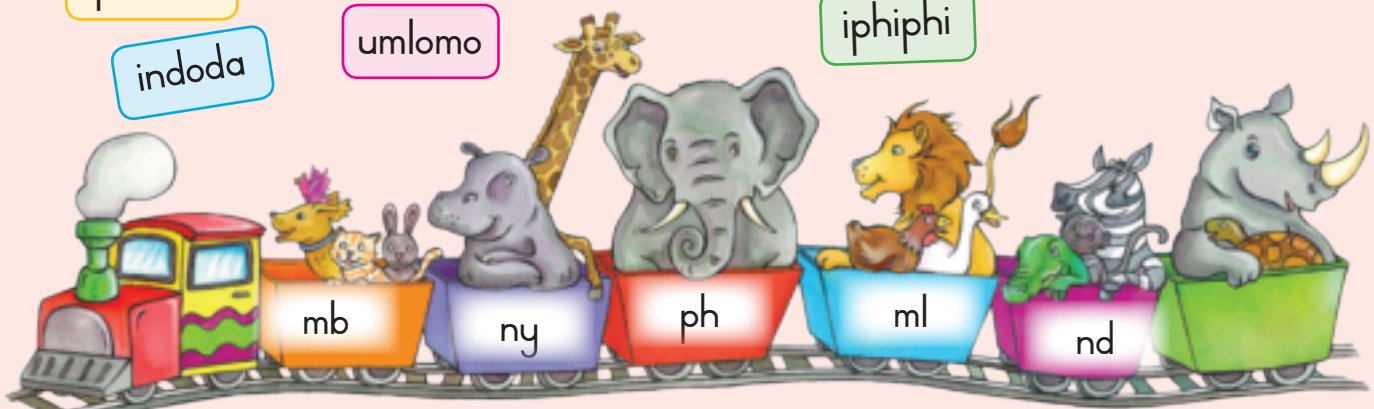
Gwala isithombe somndeni wakwenu.



**Asitlola**

Tlola amagama alandelako ngemindenini yamatjhada okungiwu.

- indawula
- inyawo
- umlozi
- induna
- umbani
- unyazana
- umbethe
- iphaphu
- inyama
- umlotha
- imbawula
- iphotoho
- indoda
- umlomo
- iphhiphi



--	--	--	--	--

Ilanga:



Asitlole

Tlola imitjho emibili ngomndeni wekhenu usebenzise amagama alandelako. Sebenzisa amanye wamagama alandelako azokusiza.

mdala

umndeni

umnakwethu

udadwethu

ithando

mncani




Ukuzithabisa

Khetha isipho somuntu ngamunye emndenini wekhenu. Thala umuda phezu kwesipho nasele umnikele sona. Zisebenzise zoke izipho.

Yithi:

Ngizokunikela **umma** **itjhokole** **di ngombana** uthanda izinto ezinetjhukela.



 <input type="checkbox"/>	 <input type="checkbox"/>	 <input type="checkbox"/>
 <input type="checkbox"/>	 <input type="checkbox"/>	 <input type="checkbox"/>

Utijhere: Tlikitla  Ilanga



Asifunde

Funda indatjana bese uzungelezele amagama anetjhada *dw*.



UBongi

NgoSondo bengiye emtjhadweni kamalume  
uDumi.

Umma bekathwele idwendwe.

Boke abantu be bathabile. Umakoti be kamuhle,  
ambethe izambatho ezihle.

Bekunabantu abanengi.

Bekuvunywa kugidwa. Sidle khulu.



UBongi bekasoloko agijimisa uSipoti.

Bewawa walimala isandla.

Bamusa kwadorhodere.



Asitlole

Funda umutjho uzaliselele ngo-Iye ✓ nofana Awa ✗.

UBongi bewalimala isandla.

Umalume uDumi bekatjhada.

UBongi uye kwadorhodere ngombana utjhe imino.



Isilulu-magama

Funda amagama ulalele amatjhada. Ngemuva kwalapho bese uthatha amagama amabili wakhe ngawo imitjho ozoyitlolela ngencwadini yakho.



Amagama atjhejiweko

abanengi  
bebathabile  
umakoti

kodwana	ilwa	inunwana	unomaphelaphelani	ihlwathi
sodwa	ilwazi	inwabu	isiphephelo	ukuhlwa



Asitlole

Zijayeze amaledere alandelako.  
Kwanjesi tlola imitjho ngencwadini yakho ngokusebenzisa amagama angebhoksini lesilulu-magama.



J J j j



Asenzeni lokhu



Lingisani bonyana kwenzeka ini ngoBongi emtjhadweni.  
Sebenzisa abalingisi abalandelako:

- UBongi
- USipoti
- Unina
- Nodorhoda



Asitlola

Tlola iinthombe lezi iinomboro ukusuka ku-1-4 ukuze zilandelane kuhle.  
Cocela umngani into evezwa ziinthombe.





**Asitlole**

Tlola imitjho ngeenthombe lezi, sebenzisa amagama alandelako. Sebenzisa amanye wamagama alandelako azokusiza.

udorhoderera

isigodo

wawa

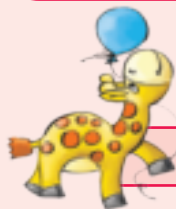
imino

ibhanditjhi

umtholapilo

umtjhado

wagjima

**Ukuzithabisa**

Thola ipendulo efaneleko uyizungezele.



<b>A</b> utshwenyekile	<b>A</b> mumbi	<b>A</b> uluphele	<b>A</b> liyana
<b>B</b> uthabile	<b>B</b> udinekile	<b>B</b> usesemutjha	<b>B</b> libalele
<b>C</b> udinekile	<b>C</b> muhle	<b>C</b> mutjha	<b>C</b> kusebusika



Asifunde



Woke umuntu udinga umngani othembekileko.

Unaye umngani? Ngubani?

UTumi noPhila badlala boke. Benza umsebenzi wesikolo ndawonye. Bafundisana abakutlolileko.

UTumi noPhila banomunye umngani othembekileko.



Ibizo lakhe nguBongi.

Unina lakaBongi ugula khulu.

Ngamalanga uBongi uhlwengisa ikhaya, abuye ahlale nomntwana wekhabo womsana.

UTumi noPhila bayamlekelela.



Asitlola

Funda umutjho uzaliselele ngo-Iye ✓ nofana Awa ✗.

UTumi, uPhila noBongi babangani abakhulu.

Unina lakaTumi uyagula.

UPhila noTumi abafuni ukulekelela uBongi.



Isilulu-magama

Funda amagama ulalele amatjhada. Ngemuva kwalapho bese uthatha amagama amabili wakhe ngawo imitjho ozoyitlola ngencwadini yakho.

iinkukhu	umlenze	iinkabi	kunzima	umuntu
iinkomo	iinzipho	iinkobe	izenzo	into

Amagama atjhejiweko

umngani  
ukusiza  
uhlanza



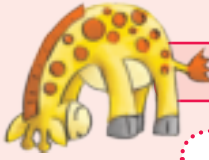
Asitlola

Zijayeze amaledere alandelako.

Kwanjesi tlola imitjho ngencwadini yakho ngokusebenzisa amagama angebhoksini lesilulu-magama.



K K k k



**Asenzeni lokhu**

Hlukanani ngeenqhema bese nidlale ukulingisa umngani otlhoga ukusizwa, khulumani bonyana ngimuphi umraro anawo, nokobana nizomlekelela banjani.



**Asitlole**

Tlola phasi kobana ngikuphi ongakwenza ukusiza esikolweni nofana ekhenu?



**1** Ngingasiza banjani esikolweni?

---



---



---



---

**2** Ngingasiza banjani ekhaya?

---



---



---



---



**Ukusiza**

**3** Abangani bami ngingabasiza banjani?

---



---



---



---

**4** Ngubani ongisizako

---



---



---



---



Ukuzithabisa

Siyagijima siya ekhabo lakaBongi. Ngubani ozokufika kokuthoma ekhabo lakaBongi. Phosa imali yesiliva. Ihloko ikuvumela kobana ubeke inyawo kabili ukuya phambili. Umsila ukuvumela bonyana ukhambe kanye ukuya emuva. Loyo ozokufika kokuthoma ekhabo lakaBongi nguye othumbileko. Nangabe ukukhamba kwakho kukufikisa egameni, lifunde igama lelo.



kgHEMA

ikghodelela

phuphuthekisa

phuphutheka

iphaphu

kgHAdlha

ithando

ilanga

isilulu

isitha

isilo

ikuke

ikama

ikomoyi

ingozi

ngizo

fika

ngiyo

umuno

imali

umma

ingubo

ingoma

isilonda

isithunzi

umnkwethu



Asifunde



USipoti yinja etshwenyako.  
Uyathanda ukugijimisana  
nokatsu.

Izolo ukatsu ubaleke  
wakhwelela emthini ukuze  
uSipoti angamtholi.

Ukatsu bekasaba ukwehla.



Ngithethe isitepisi ukuze ngithule ukatsu emthini.

UMusa ungilekelele.

Sigcine ngokupha ukatsu ukudla.

Wabese uyalala ukatsu.



Asitlole

Funda umtjho uzaliselele ngo-Iye ✓ nof ana Awa ✗.

Ukatsu ugjimizeinja.

Ukatsu wakhwelela emthini.

UBongi wehlisa ukatsu emthini.



Isilulu-magama

Funda amagama ulalele amatjhada. Ngemuva kwalapho bese uthatha amagama amabili wakhe ngawo imitjho ozoyitlolela ngencwadini yakho.

emthini	khwelela	ngena		<b>Amagama atjhejiweko</b> iintolo iindawo iinkabi
umthombo	khweba	ngapha		
umtholo	khwamuka	nguye		



Asitlole

Zijayeze amaledere alandelako.

Kwanjesi tlola imitjho ngencwadini yakho ngokusebenzisa amagama angebhoksini lesilulu-magama.



Handwriting practice area with dashed lines and a solid line. The first row shows the letters 'L' and 'I' with dotted lines for tracing. The second row is empty for independent practice.



Asenzeni lokhu

Gwala isithombe sesilwana esifuywako ocabanga bonyana singaba silwana esihle. Tlola imitjho emithathu utjho kobana kungani uthanda isilwana lesa.



Asitlole

Khetha isabizwana uqedelele umutjho.

yona

wona

lona

yena

bona

sona



UDudu noBangani \_\_\_\_\_ badlala ngebhola.



Umma \_\_\_\_\_ ukhelela amanzi.



Umlomo \_\_\_\_\_ uvuvukile.

Isibha \_\_\_\_\_ sibiza kwamambala.



Ikapho yakamma \_\_\_\_\_ iqephukile.

Umntwana wakamma usamunya \_\_\_\_\_ ibisi.








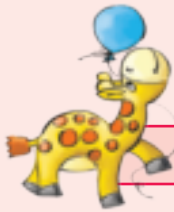


Asitlole

Qedelela ngamatjhada alandelako bese umadanisa igama nesithombe esifaneleko. Sebenzisa amanye wamagama alandelako azokusiza.

ny bh ng iin zi

				
i ___ ama	i ___ olo	i ___ nyo	iny ___ a	___ cwadi



Ukuzithabisa

Madanisa iinthombe uveze bonyana wenza ini ekuseni, entambama nebusuku.



- ekuseni
- entambama
- ebusuku





**Asifunde**

Funda indatjana bese uzungelezele amagama anetjhada h.



Hawu, kufanele silekelele soke ekhaya.

Ngiyathanyela, umma uhlanza imikhwa,  
ubaba uthintitha ifesidere.

Umntwana uyaphahlazela.



Nasiqedileko sihlala phasi sicoce.  
Ngifunda incwadi namkha ngivakatjhele uBongi.



Asitlole

Funda umutjho uzaliselele ngo-Iye ✓ nofana Awa ✗.

Ubaba uhlanza izembatho.	
Umma uyathanyela.	
Nangiqedako ngiya ekhabo lakaBongi.	



Isilulu-magama

Funda amagama ulalele amatjhada. Nge-muva kwalapho bese uthatha amagama amabili wakhe ngawo imitjho ozoyitolela ngencwadini yakho.



hawu	izinto	vula	qeda
ihariga	iimbuzi	vuma	qeba
ihogo	izala	veza	qaba

Amagama  
atjhejiweko  
vakatjha  
tjhada  
vuma

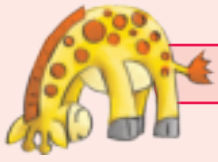


Asitlole

Zijayeze amaledere alandelako. Kwanjesi tlola imitjho ngencwadini yakho ngokusebenzisa amagama angebhoksini lesilulu-magama.



M M m m



Aenzeni lokhu

Gwala isithombe salokho ongathandi ukukwenza ekhaya.



Asitlole

Tlola imitjho emibili ngezinto ongathandi ukuzenza.

Angithandi

Angithandi



Asitlole

Qedelela ngamatjhada alandelako bese umadanisa igama nesithombe esifaneleko. Sebenzisa amanye wamagama alandelako azokusiza.

ma nga mvu nyo

i ___	inya ___	inya ___	i ___ ka



Ukuzithabisa

Gwala isithombe esiveza bonyana wenza ini ekuseni, ntambama nebusuku.



Ekuseni

Large empty rectangular box for drawing or writing related to the 'Ekuseni' section.



Entambama

Large empty rectangular box for drawing or writing related to the 'Entambama' section.



Ebusuku

Large empty rectangular box for drawing or writing related to the 'Ebusuku' section.



Asifunde



Utityhere uthi soke kufanele  
sidlale.

Ngithanda ukugijima. Siyadlala  
nakuphuma isikolo.

Ngithanda inetbholo.

UPhila udlala inetbholo njalo  
ngoMvulo nangeLesine.

Uyiphosa ngamandla iye kude?  
Ngelinye ilanga waphula if asidere ngebholo.



**Asitole**

Funda umutjho uzaliselele ngo-Iye ✓ nof ana Awa ✗.

UPhila uthanda ibholo erarhwako.	
UPhila udlala ibholo erarhwako ngoMvulo nangeLesine.	
UPhila waphula if asidere.	



**Isilulu-magama**

Funda amagama ulalele amatjhada. Ngemuva kwalapho bese uthatha amagama amabili wakhe ngawo imitjho ozoyitolelela ngencwadini yakho.

ibholo	wisa	phila	dla
ibhesi	wena	isipho	dlula
bhoda	wona	iphini	dlala



**Amagama atjhejiweko**

asule  
phasi  
wela  
isiphila



**Asitole**

Zijayeze amaledere alandelako.  
Kwanjesi tlola imitjho ngencwadini yakho ngokusebenzisa amagama angebhoksini lesilulu-magama.



N N n n



Asenzeni lokhu

Khumbula umdlalo othanda ukuwudlala.  
Hlathululela umgani wakho ngezinto ozithandako nalezo ongazithandiko.



Asitlole

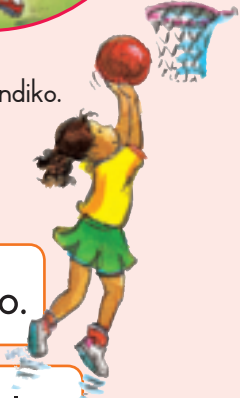
Tlola imitjho emithathu ngomdlalo owuthandako nomdlalo ongawuthandiko.

ngithanda

angithandi



\_\_\_\_\_ ibholo erarhwako.



\_\_\_\_\_ ibholo yenetbholo.



\_\_\_\_\_ ukududa.



Asitlole

Tlola amalanga weveke ngokulandelana kwawo. Thoma ngoSondo.  
Cwala isithombe esitjho bonyana wenza ini ngoMvulo.

ngoSondo		
ngoMvulo		
ngeLesibili		
ngeLesithathu		
ngeLesine		
ngeLesihlanu		
ngoMgqibelo		

Ilanga:

Ukuzithabisa

Qalिसani isithombe. Khulamani ngalokho enikubonako.  
Qala isithombe, yitjho okuseduze nokusebangeni elikude.

Asitlole

Tlola imitjho emithathu ngesithombe.

Blank writing area with three horizontal lines.

Utijhere: Tlikitla  Ilanga



**Asifunde**

Funda indatjana bese undulungele amagama anetjhada dl.



Ngithanda ukudla imirorho esesivandeni sakwethu.

Sitjale amabhutata, amazambana netamati.

Izulu nalinganiko, sithelelela iintjalo.

Ngelinye ilanga imbuzi yazidla zoke iintjalo.

Ngayigijimisa kodwana yangitjhiya.



Asitlole

Phendula imibuzo elandelako.

Utjale ini esivandeni?

Uzithelelela nini iintjalo?

Yini eyadla iintjalo?



Isilulu - magama

Funda amagama ulalele amatjhada. Ngemuva kwalapho bese uthatha amagama amabili wakhe ngawo imitjho ozoyitlolela ngencwadini yakho.

idla	itshela	yemba
dlula	tshaya	izambana
dlala	tshidza	imbizo



Amagama atjhejiweko  
imirorho  
idlanga  
ithele



Asitlole

Zijayeze amaledere alandelako.

Kwanjesi tloa imitjho ngencwadini yakho ngokusebenzisa amagama angebhoksini lesilulu - magama.



Handwriting practice area with dashed lines and circles for tracing.



**Asenzi lokhu**

Hlukanani ngababili, dlalani umdlalo nilingise imbuzi ingena ngesivandeni idle iintjalo. Ngubani ozokuba yimbuzi?



**Asifunde**

Qalani iinthombe ninomngani wakho bese upha iinthombe iinomboro ngokulandelana.



**Asitlole**

Tlola imitjho emibili ngalokho okubona esithombeni. Sebenzisa amanye wamagama alandelako azokusiza.

imbuzi

imirorho

idle

isango

*sayiqotjha*

Handwriting practice area with five horizontal lines.

Ilanga:



Ukuzithabisa

Qala imibala. Hlathululela umngani bonyana mibala miphhi oyithola nawuhlanguanisa imibala leyo.



# Ukuvanga imibala



Imibala:



kubomvu



kusarulani



kuhlaza  
kwesibhakabhaka

Yithi:

Nangihlanguanisa umbala obomvu nosarulana ngithola \_\_\_\_\_.



kubomvu

+



kusarulani

=



ku-orentji



kuhlaza  
kwesibhakabhaka

+



kusarulani

=



kuhlaza kotjani



kubomvu

+



kuhlaza  
kwesibhakabhaka

=



kuphephuli

Utijhere: Tlikitla  Ilanga



Asifunde



Ugogo uluphele khulu.

Ngijayele ukumlekelela  
nakakhambako.

Usebenzisa idondolo bese akhambе  
kancani.

Uzwa ubuhlungu emilenzeni nedinini.



Emndenini wekhaya siyalekelelana soke.

Kuhle ukuhlala nomndeni.



Asitlola

Funda umutjho uzaliselele ngo-Iye ✓ nofana Awa ✗.

Ugogo wami usese mutjha.

Uzwa ubuhlungu edinini nemlenzeni.

Emndenini wami asisizani.



Isilulu-magama

Funda amagama ulalele amatjhada. Ngemuva kwalapho bese uthatha amagama amabili wakhe ngawo imitjho ozoyitlola ngencwadini yakho.

ikhambo	nciza	indaba
izembatho	ncenga	indoda
imbelesi	ncipha	induna



Amagama atjhejiweko

imirorho

idlanga

ithele



Asitlola

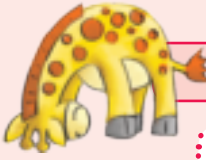
Zijayeze amaledere alandelako.

Kwanjesi tloa imitjho ngencwadini yakho ngokusebenzisa amagama angebhoksini lesilulu-magama.



P P

p p



Asenzeni lokhu

UBobo akafuni ukusiza abantu. Dlalani nilingise enizokutjho kuBobo.



Asitlole

Thola bonyana ubani uthanda miphi imibala.

Buza abantwana aba-5 ngetlasini bonyana bathanda miphi imibala.

Ibizo	Umbala owuthandako



Asitlole

Tjhugulula imitjho elandelako isuke esikhathini sanje bese iye esikhathini esidlulileko.

Ngiyadlala emini.

Izolo \_\_\_\_\_.

UBanjani ukhuluma nomalume wakhe.

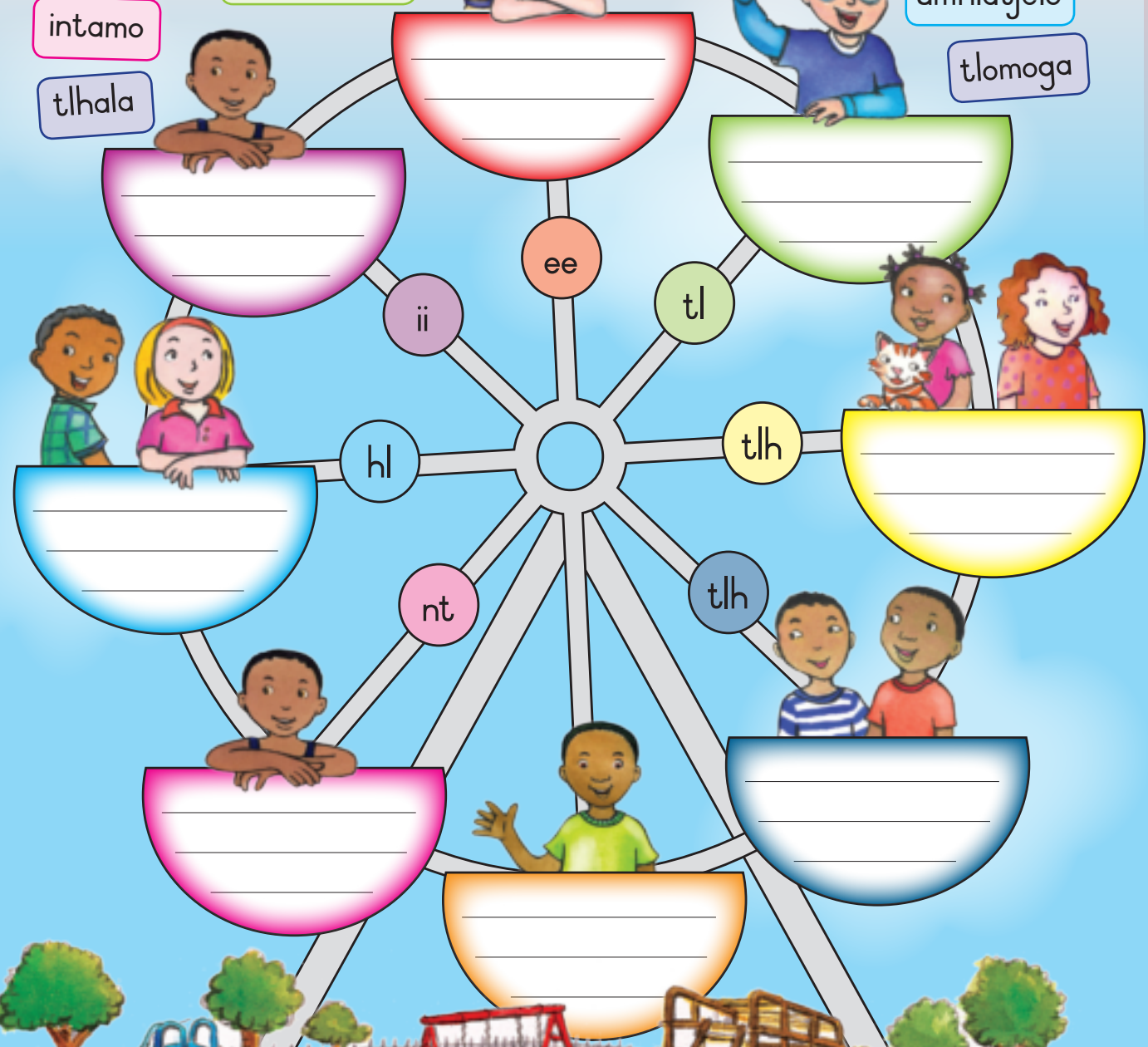
Izolo uBanjani \_\_\_\_\_.

Izolo \_\_\_\_\_.



tlhahlhula    eendaweni    umseme    ihlabathi    intanga  
 Ukuzithabisa    Tlola amagama alandelako ngebhoksini elinamatjhada anembako.    iimbuzi

intaba    iinkosi    umtlo    itlelezi    umsana    hlahluba  
 eenkomeni    tlhatlhabeja    iinduna    umsizi    iinsibha  
 intamo    umhlatjelo  
 tlhala    tlomoga





Asifunde

Utijhere usilethele iindaba ezimnandi.

Uthe itlasi lethu linekhambo ngebhesi.  
Sizokukhamba iveke yoke.

Sithabe sapheze salila.


 UBongi

“Bengingazi bonyana ngizakhe ngiye ekuphumuleni,” kutjho uBongi.


 UBen

“Ngifuna ukuya elwandle,” kutjho uBen.



UJabu

"Ngifuna ukubona iinlwana zemangweni," kutjho uJabu.



U-Ann

"Ngifuna ukubona iindawo," kutjho U-Ann.

Utijhere usinikele iinkipha eziqalekako esizozembatha ngebhesini.

Sithabe kwamambala. Besithabe kangangani.



Asitlola

Funda indaba uphendule imibuzo elandelako.

UBen bekafuna ukuya kuphi?

Ukuya

UJabu bekafuna ukubona ini?

Bekafuna ukubona

Bazokuhlala isikhathi esingangani abantwana?

Bazokuhlala



Isilulu-magama

Funda amagama ulalele amatjhada. Ngemuva kwalapho bese uthatha amagama amabili wakhe ngawo imitjho ozoyitlola ngencwadini yakho.

lila	tjheja	iinkuni	intaba
leli	itjhirho	iinkabi	into
loyo	tjhugulula	iinkomo	intombi

Amagama atjhejiweko

lethu usilethele ukubona



Asitlola

Zijayeze amaledere alandelako.

Kwanjesi tlola imitjho ngencwadini yakho ngokusebenzisa amagama angebhoksini lesilulu-magama.



Q Q

q q



Asenzeni lokhu

Cocela umngani wakho bonyana ufuna niye kuphi begodu nizokubona ini lapho.  
Gwala isithombe sesikipa uveze bonyana ufuna ukubona ini.



Asitlole

Tlola ibizo lakho.

Blank writing area with dashed lines for a name.

Tlola amagama alandelako usebenzise amagabhadlhela.

ubongi	usipho	ujabu	uphila	umusa

Tlola amabizo wabangani bakho abe mane.


Ilanga:



Asitlola

Tlola imitjho emibili utjho bonyana uJabu ukuphi, u-Ann noBongi bazokuya kuphi.

Blank writing area with horizontal lines.

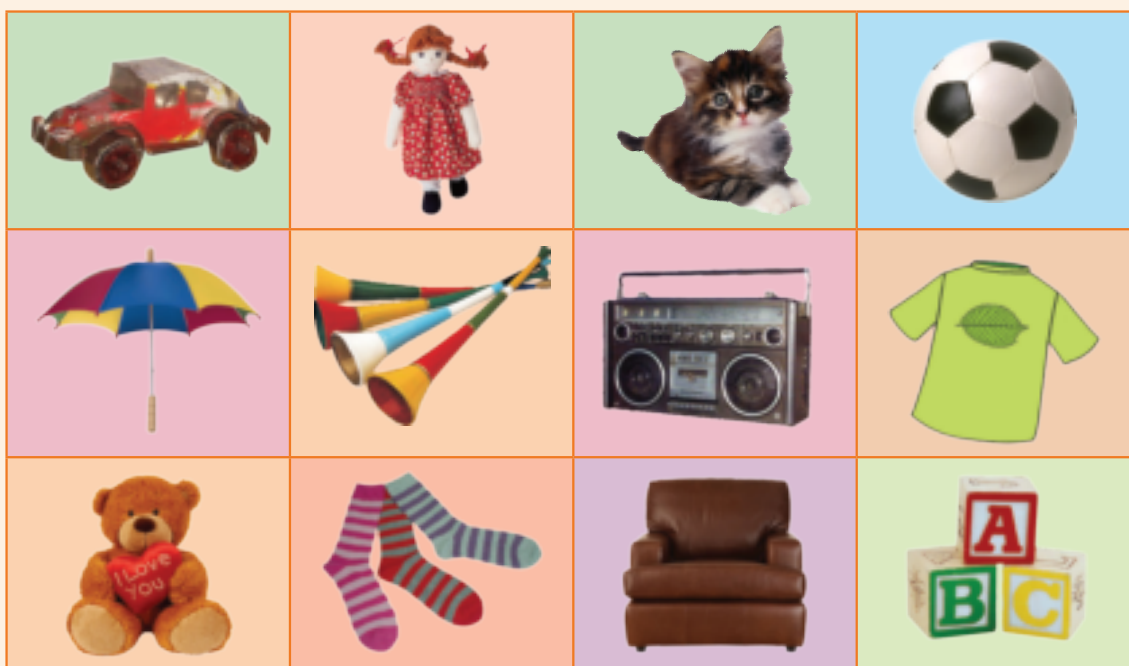
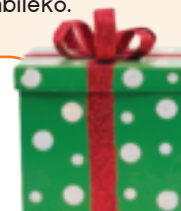


Ukuzithabisa

Izipho. Vala amehlo uthinte izipho ngemino. Yitjho bonyana uzokupha bani isipho osithintileko. Kungani uthi singamfanela isipho lesa. Khetha sakho isipho. Khetha sakatitjhere. Khetha nezabangani. Tlola bonyana ukhiphe ziphi izipho. Loyo ozokukhipha izipho ziphelele kuye kokuthoma, nguye othumbileko.

Ithi:

Isambreni ngizosinikela utitjhere ngombana utjhiswa lilanga.



Utitjhere: Tlikitla

Ilanga



Asifunde



Siya kuphi?

Siyokubona iinlwana zemangweni.

Nasibuyako siya elwandle.

Sizokukhamba ngebhesi ekulu zemangweni.

Siqale umebhe sabona iindawo.



UJabu

"Ngifuna ukubona itjhaga namazinyo wayo abukhali," kutjho U-Ann.



U-Ann

"Ngifuna ukwemba umgodi otjhingako ehlabathini," kutjho uJabu.



Asitlolo

Funda indaba uphendule imibuzo elandelako.



UBongi

"Ngifuna ukubona ibhubezi namazinyo walo amakhulu," kutjho uBongi.

U-Ann ufuna ukubona ini?

U-Ann ufuna ukubona

UBongi bekafuna ukubona ini?

UBongi bekafuna ukubona

UJabu bekafuna ukwenza ini?

UJabu bekafuna



Isilulu-magama

Funda amagama ulalele amatjhada. Ngemuva kwalapho bese uthatha amagama amabili wakhe ngawo imitjho ozoyitlola ngencwadini yakho.

indlovu	intwala	umgodi	Amagama atjhejiweko siyokubona sabona
indlu	abantwana	umgade	
indlela	entweni	umgodla	



Asitlolo

Zijayeze amaledere alandelako.

Kwanjesi tlola imitjho ngencwadini yakho ngokusebenzisa amagama angebhoksini lesilulu-magama.



R R r r



Asenzeni lokhu



Cocela abangani bakho bonyana ngiziphi iindawo ofuna ukuzivakatjhela. Ufuna ukubona ini eendaweni lezo?



Asitlola

Gadangisa phezulu kwamathosi ubone kobana abantwana bafuna ukubona ini.



UJabu



UBongi



UDodo



UMusa





Asitlola

Tlola umutjho ube munye ngesithombe ngasinye.  
Amagama la azokusiza, asebenzise.

sakhwela

iinkhwama

sakhamba

abantwana

salala

Large empty box with horizontal lines for writing.



Asitlola

Tlola iinomboro eentombeni ukuze zilandelane kusuka kesoku-1 – 3 utjengise ukulandelana kwazo. Cocela umngani wakho indaba ecocwa ziinthombe lezo.





Asifunde

Funda indatjana bese undlungele amagama anetjhada **ph**.

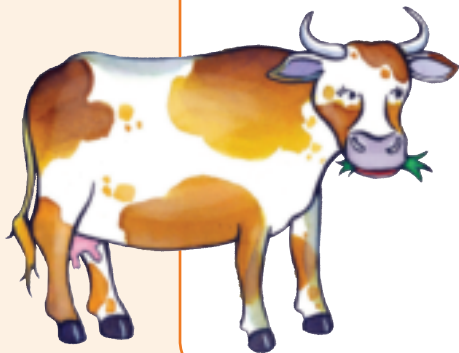
NgoMvulo besingebhesini.

Ibhesi yethu ikhamba phasi endleleni.

Siveze iinhloko ngamafesidere.

Sifuna ukubona imamba ehlala ehlathini  
kodwa ihlathi liminyene.

Nanzi izindlu, amasimu wesiphila neenkomo  
ezinengi.





USipoti uthanda iinkomo uyazelusa.  
UBongi uphaya uSipoti. Ufuna ukwehla aphume ngebhesini.



UJabu uthi, "Jama Sipoti, awuyi lapho!"



**Asitlola** Funda indaba uphendule imibuzo elandelako.

Bakuphi njenganje ngebhesi?

Baseduze

Yini eyenza uSipoti afune ukuphuma ngebhesini?

Kungombana ubona

Babona ini abantwana boke?

Babona

Yini ehlala ehlathini?

ihlala ehlathini.



**Isilulu-magama**

Funda amagama ulalele amatjhada. Ngemuva kwalapho bese uthatha amagama amabili wakhe ngawo imitjho ozoyitlola ngenwadini yakho.



Amagama atjhejiweko

phila	phola	iphela	phepha	phuma
phalaza	pheka	phumula	phakela	ipholisa

yethu  
bakwethu  
awuyi



**Asitlola**

Zijayeze amaledere alandelako. Kwanjisi tlola imitjho ngenwadini yakho ngokusebezisa amagama angebhoksini lesilulu-magama.

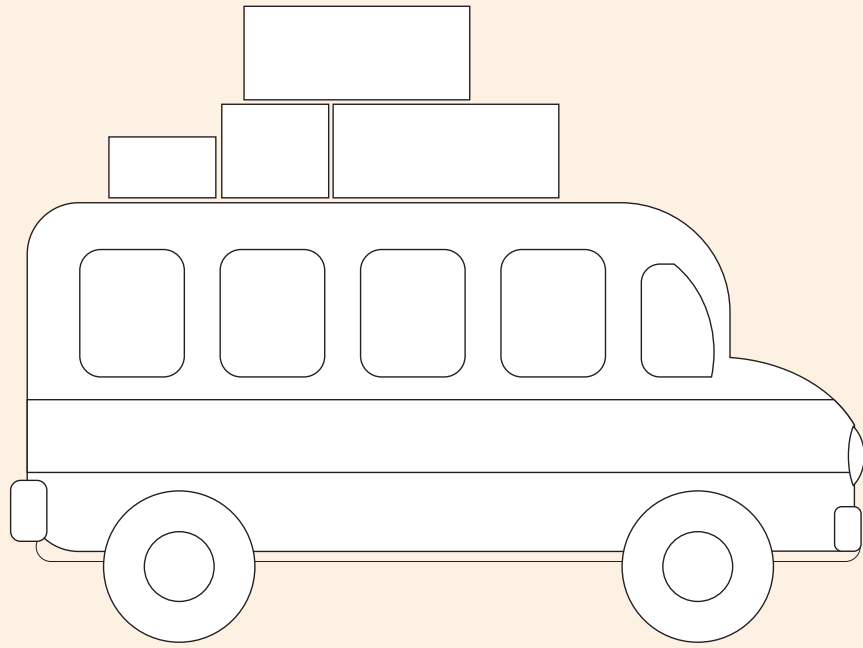
S S

s s



Ukuzithabisa

Gwala ubuso babantwana emafasidereni webhesi bese ufaka umbala emzimbeni webhesi.



Asitlola

Tlola umutjho ngesithombe osigwalileko.

Blank writing area with horizontal lines for a drawing or writing activity.



Asitlola

Zungelezela ipendulo okungiyi ukuveza ubunye nobunengi emitjhweni elandelako.

Isivumelwano  
u-**u**- siveza ubunye  
bese isivumelwano  
u-**ba**- siveze ubunengi.

UMlayedwa	ukhamba	bakhamba	ngebhesi nakaya esikolweni.
Ubaba	basebenza	usebenza	emasimini wamantongomani.
Iinkomo zekhethu	ingene	zingene	emasimini wesiphila.
Abasana	badla	udla	umnombela ekweluseni.



Asitlola

Qedelela imitjho ngamagama angenzasi.

ibhesi

ngebhesi

ngebhesini



Inja ifuna ukuphuma \_\_\_\_\_.

Bakhamba \_\_\_\_\_.

\_\_\_\_\_ le ikhamba kancani nayikhuphukako.



Ukuzithabisa

Tjengisa otjhayela ibhesi bonyana kufanele akhambe kuphi ukuze aphume ehlathini.





Asifunde

Ibhesi yethu seyingena eGoli.

Sibona iinkoloyi ezinengi neenthuthuthu.

Kunabantu abanengi abaya ngapha abanye baya le.

Selaphumile ngebhesini uSipoti.

Ufuna ukuyokudlala nezinye izinja ezincani.

UJabu uthi, "Buya Sipoti. Awuzwa."





Ugijima khulu uSipoti, akabuyi.  
Asilandeleni uSipoti.  
"Sipoti, buya, uzokutjhayiswa  
ziinkoloyi!" kurhuwelela uBongi.



Asitlola

Funda indaba uphendule imibuzo elandelako.

Babona ini edorobheni?

Babona

Yini eyenza uSipoti afune ukuphuma ngebhesini?

Kungombana bekafuna

Ngubani obize uSipoti?



Isilulu-magama

Funda amagama ulalele amatjhada. Ngemuva kwalapho bese uthatha amagama amabili wakhe ngawo imitjho ozoyitlola ngencwadini yakho.

thuma	ilizwe	iswazi
thela	yizwa	suswa
thutha	ilizwi	iswidi

Amagama atjhejiweko

sibona  
ezinengi  
abanye



Asitlola

Zijayeze amaledere alandelako.  
Kwanjesi tlola imitjho ngencwadini yakho ngokusebenzisa amagama angebhoksini lesilulu-magama.



T T t t



Asenzeni lokhu

Lingisani uSipoti nakaphuma ngebelo ngebhesini.  
Tjengisani kobana uBongi umbize bunjani bonyana abuye.



Asitlola

Nombora iinthombe ezilandelako zilandelane ngelandelano lazo.



Asitlola

Tlola umutjho ube munye ngesinye nesinye isithombe.

Handwriting practice area with seven horizontal blue lines.



Ukuzithabisa

Siphalisana ngokuya ngebhesini. Ngubani wokuthoma ozokufika qangi ngebhesini? Phosa imali eyisimbi phasi. Ihloko ikuvumela kobana ukhambe kabili ukuya ngebhesini. Umsila ukuvumela bonyana ukhambe kanye ukuya ngebhesini. Loyo ozokufika kokuthoma ngebhesini nguye othumbileko. Nawukhamba ufika egameni, lifunde igama lelo.



uthubhakghuru

thekgha

thuntubala

swina

thimula

thinta

ithemba

phakela

suswa

ingoma

ngizo

iswidi

phumula

imbongi

thula

ingozi

suswa

pheka

thumba

thela

ingubo

iswazi

phalaza

imbuzi

thoma





Asifunde



Sisesiqiwini iKruger National Park.

Nanziya iinlwana ezinengi zijame nendlovu.

Ngifuna ukubona ibhubezi.

Boke abantwana bahlola emafesidereni  
bafuna ukubona iinlwana zemangweni.

UJabu ubona ibhubezi elikhulu lingemva  
kweenlwana.



uJabu

"He! Bonani. Likhulu kangangani ibhubezi. Lifuna ukudla iinlwana emini nje," kutjho uJabu.



Asitlole

Funda indaba uphendule imibuzo elandelako.

Ngiziphi iinlwana ezizokubonwa bantwana eKruger Park?

Bazokubona

Lifuna ukudla ini ibhubezi?

Lifuna ukudla

Ngubani obone ibhubezi kokuthoma?

ubone ibhubezi kokuthoma.



Isilulu-magama

Funda amagama ulalele amatjhada. Ngemva kwalapho bese uthatha amagama amabili wakhe ngawo imitjho ozoyitolela ngencwadini yakho.

ibholo	ngemva	dlala
bhaga	imvelo	dlula
ibhanana	imvubu	idla



Amagama atjhejiweko

ezinengi ukubona elikhulu



Asitlole

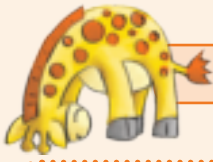
Zijayeze amaledere alandelako.

Kwanjesi tlola imitjho ngencwadini yakho ngokuthi

usebenzise ngokusebenzisa amagama angebhoksini lesilulu-magama.



Handwriting practice area with a blue dashed line. It contains the letter 'u' in a large font, followed by a dotted 'u' for tracing, and then a smaller 'u' followed by a dotted 'u' for tracing.



Asenzeni lokhu

Gwala isithombe sesilwana othanda ukusibona.



Asitlola

Tlola imitjho emibili ngesithombe sakho.



Asitlola

Tlola imitjho ibe mithathu.

Madanisa okungebhoksini elipinki nalokho okungebhoksini elihlaza kotjani.

Abantwana bebangasafuni

UJabu nguye owabona

Abantwana bangena



ibhubezi.

ngebhesini.

ukubuyela ekhaya.



Asitlole

Qedelela ngamaledere uzakhele amagama.  
Madanisa igama nesithombe okungiso.

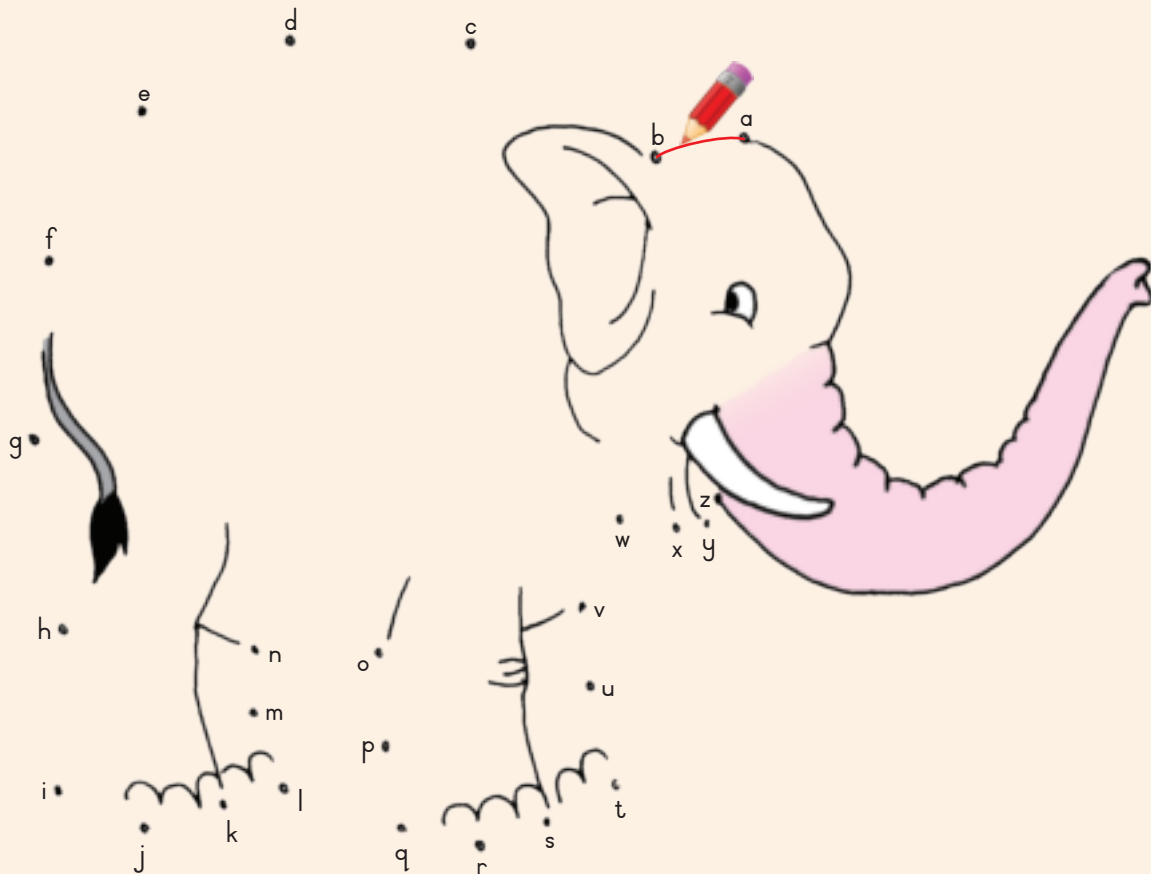
fu tl kh th

			
___ __ atha	i ___ __ abitjhi	___ __ ola	___ __ ndela



Ukuzithabisa

Silwana siphi?  
Qedelela isithombe lesi bese usifaka umbala.





Asifunde

Funda indatjana bese uzungelezele amagama anetjhada **hl**.

Sesibuyela elwandle godu ngebhesi.

Ihlabathi itjhisa bhe.

Ilwandle likhulu.



Amagagasi ayaphakama.

Awaseleki amanzi welwandle, anetswayi.

Bonani imikhumbi ngemanzini.

Kuneemfesi ezinengi ezihlala elwandle.

Ngibona ihlambi nomkhomo.



Kumnandi ukukhamba ehlabathini.  
Sakha indlu ngayo. USipoti wembe  
umgodi wawela ngaphakathi.  
Mdoseni uSipoti ngemgodini.



Asitlola

Funda indaba uphendule imibuzo elandelako.

Bebakuphi abantwana?

Abantwana

USipoti wenzani?

Wawela

Babona ini abantwana?

Babona



Isilulu-magama

Funda amagama ulalele amatjhada. Ngemuva kwalapho bese uthatha amagama amabili wakhe ngawo imitjho ozoyitlola ngenwadini yakho.

hleka	hluma	mdose
hlala	hlephula	mdanise
hloma	ihloko	mdedele



Amagama  
atjhejiweko

likhulu  
sesibuyela  
bonani



Asitlola

Zijayeze amaledere alandelako.  
Kwanjesi ngokusebenzisa ngokuthi  
usebenzise amagama angebhoksini lesilulu-magama.



V V v v



**Asenzeni lokhu**



Yenza irhelo lazo zoke izinto abantwana abazibonako ebhitjhini.






**Asitlole**

Tlola iposkarada ucocele umngani wakho ngalokho owakwenza elwandle.

---

---

---

---

---

---

Ilanga:



Asitlola

Tlola amalanga weveke ngendlela alandelana ngayo.

ngeLesine

ngoSondo

ngeLesihlanu

ngeLesibili

ngeLesithathu

ngoMgqibelo

ngoMvulo

Ilanga	Engivamise ukukwenza
ngoSondo	



Asitlola

Tlola iimbalo zamagama ezilandelako bese uqedelela ngamagama okungiwo. Sikwenzele isibalo sokuthoma.

Diagram for the 'kgh' sound:

- ama
- kghama**
- edlha
- ophola

Diagram for the 'vu' sound:

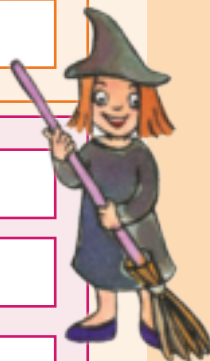
- vuka
- vuvuka**
- nula
- mela

Diagram for the 'th' sound:

- wala
- ukula
- ulula

Diagram for the 'lu' sound:

- mula
- mela
- lukeza



Utijhere: Tlikitla

Ilanga



Asifunde

Funda indatjana bese uzungelezele amagama anetjhada th.



Kumele sibuyele emakhaya  
namhlanje. Asikathabi.

Besithabile siselwandle.

UBongi uphatheke kumbi  
wabe walila.



Sesibutha izinto zethu.

Singena ngebhesini.



USipoti uhlezi noBongi.

Soke siyaliqala ilwandle.

USipoti ubona iinkomo eplasini.  
Sicabange ngelwandle  
nemikhomo iduda ngelwandle  
idlala ndawonye.



USipoti wakhonghotha khulu.  
Walinga ukuphuma ngef asidere.  
Hayi, Sipoti. Jama.



Asitlola

Funda indaba uphendule imibuzo elandelako.

Khuyini eyenze abantwana baphatheka kumbi namhlanje?

Kungombana

Ngubani olilileko?

ulilile.

USipoti uhlezi eduze kwakabani?

Uhlezi eduze



Isilulu - magama

Funda amagama ulalele amatjhada. Ngemuva kwalapho bese uthatha amagama amabili wakhe ngawo imitjho ozoyitlola ngencwadini yakho.

phepha	thatha	ngena	jayela
ipuphu	thoma	ingubo	ijuba
phephuka	thutha	ingoma	jama



Amagama atjhejiweko

kumele  
kumbi  
zethu



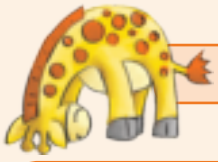
Asitlola

Zijayeze amaledere alandelako.  
Kwanjisi tlola imitjho ngencwadini yakho ngokuseben- zisa amagama angebhoksini lesilulu - magama.



W w

W w



Asenzeni lokhu

Gwala isithombe utjengise kobana abantwana  
bebaphatheke bunjani nababuyela ekhaya.



Asitlola

Tlola imitjho ibe mithathu.

Madanisa okungebhoksini elipinki nalokho okungebhoksini elihlaza kotjani.

USipoti

Abantwana bakhwele

Bebangasafuni

Abantwana

ibhesi.

bebaphatheke kumbi.

bekathabile nabaselwandle.

ukubuyela ekhaya.



Asitlola

Tlola ngelanga mhla wawudanile.

---



---



---



---



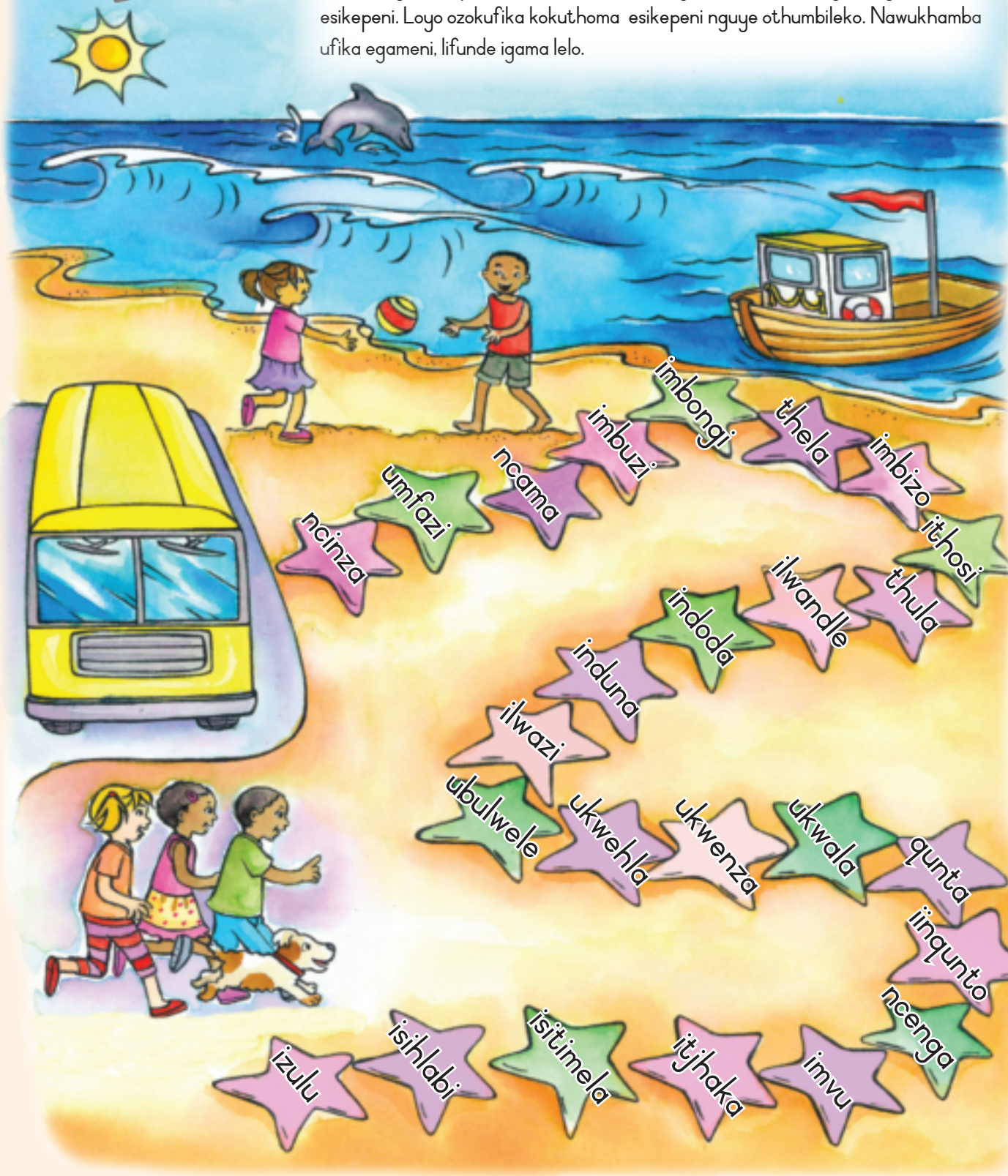
---



Ukuzithabisa

Asigijimeni siye ngesikepeni?

Ngubani wokuthoma ozokufika kokuthoma ngesikepeni bekabengowukuthoma ukubuyela ebhesini. Phosa imali eyisimbi phasi. Ihloko ikuvumela bonyana ukhambé kabili ukuya esikepeni. Umsila ukuvumela bonyana ukhambé kanye ukuya esikepeni. Loyo ozokufika kokuthoma esikepeni nguye othumbileko. Nawukhamba ufika egameni, lifunde igama lelo.





Asifunde

"Konje phana ngingabuyela bunjani elwandle godu?" kutjho uBongi.



UBongi

Utityhere



"Namhlanje nizokutlola indaba ngekhambo," kutjho utityhere.

UBen



"Ngizokutlola indaba ngeenlwana engizibone eplasini," kutjho uBen.

UJabu



"Ngizokutlola indaba ngeenlwana zemangweni engizibonileko," kutjho uJabu.



U-Ann

U-Ann uthi, "Ngizokuya kwamalume ngifike ngimcocele."  
 "Ngizokudlala noSipoti ngaphambili kobana ngiyokulala. Ngizokubhudanga ngibona ilwandle."



Asitlole

Funda indaba uphendule imibuzo elandelako.

Ngubani ozokutlola ngeenlwana zemangweni?

uzokutlola ngeenlwana zemangweni.

Ngubani ozokutlola ngeenlwana zemaplasini?

uzokutlola ngeenlwana zemaplasini.

Yini into uBongi azoyenza ngaphambi kobana ayokulala?

UBongi

UBongi ufisa ukubhudanga ini?

Ufisa ukubhudanga



Isilulu-magama

Funda amagama ulalele amatjhada. Ngemuva kwalapho bese uthatha amagama amabili wakhe ngawo imitjho ozoyitlola ngencwadini yakho.

nje	ilwazi	mcocele
njalo	ubulwele	mcocele
inja	isilwana	mcuphe

Amagama atjhejiweko

godu  
ngifike  
phambi



Asitlole

Zijayeze amaledere alandelako. Kwanjesi tlola imitjho ngencwadini yakho ngokusebenzisa amagama angebhoksini lesilulu-magama.

X X x x



## Asenzeni lokhu

Sicocela iindaba zakho.  
Cocela abangani bakho ngekhambo lakho.



## Asitlole

Tlola imitjho emibili ngeendaba ezenzeka ekhaya.




## Asitlole

Tlola imitjho ibe mithathu.  
Madanisa okungebhoksini elipinki nalokho okungebhoksini elihlaza kotjani.

Namhlanje
Izolo uNomakhuwa
Kusasa
Abantwana

bekaye kwabo lakaBongi.
ngizokuya esikolweni.
ngitshwenyekile
bafuna ukubuyela ekhaya.



## Ukuzithabisa

Ekhasini elingeqadi, gwal indlela ibhesi ekhamba ngayo nawuya esikolweni.

- |                             |   |
|-----------------------------|---|
| <b>1</b> Ithoma esikolweni. | <b>5</b> Iye esiqiwini esaziwa ngeKruger National Park. |
| <b>2</b> Iye eplasini.      | <b>6</b> Iye elwandle.                                  |
| <b>3</b> Iye entabeni.      | <b>7</b> Ibuyele godu esikolweni.                       |
| <b>4</b> Iye edorobheni.    |   |

Ilanga:



Esikolweni



Emahlathini



Edorobheni



Emaplasini



Elwandle



eKruger  
National Park

Utijhere: Tlikitla

Ilanga



## Asifunde

Funda indatjana bese uzungelezele amagama anetjhada **nz**.

Bengisendleleni ngiya ekhaya ngisuka esikolweni izolo ngesikhathi izulu lithoma ukuna.

Livele lana khulu. Ngabamanzi nte.

Bengigega nje ngisaba ukuduma kwezulu.

Izulu langithambisa ubuso, azange ngisakwazi nokubona.

Bengingaboni nokobana ngikhamba ngingedwa.

Bengingazi kobana ngizokwenza bunjani. Ngalila.



Asitlola

Funda indatjana engehla bese uphendula imibuzo.

UBongi bekabuya kuphi?

Bekabuya

Uphatheke bunjani izulu nalinako?

Uphatheke

Bekakhamba nobani uBongi?

Bekakhamba



Asitlola

Tlola isihloko esihlukileko okungiso indatjana le.

Blank writing area with dashed lines for text entry.



Isilulu-magama

Funda amagama alandelako ulalele okungiso.

amanzi	iinzibi	iinzukulwani
njani	njalo	nje
lila	lala	lola



Asitlola

Qedelela amagama la bese uwamadanise neenthombe okungiso.



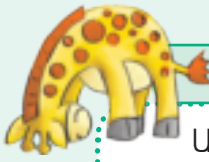
imb\_\_

ith\_\_

iz\_\_

ama\_\_

ith\_\_



## Asenzi lokhu

Ucabanga bonyana yini eyenzekako kuBongi?  
Cocela umngani wakho kobana kwenzeka ini kuBongi.  
Yitjho isiphetho esihle nesimbi sendaba le.



## Esihle

## Esimbi



## Asitlola

Tlola imitjho emihlanu ngesiphetho esihle.  
Sebenzisa amanye wamagama alandelako azokusiza.

lila

khamba

izulu

thukiwe

inja

---



---



---



---



---



## Asifunde

Funda isiphetho sendatjana le.

Indatjana  
le yaphetha  
njani?

Ngasula amehlo ebekanethwa lizulu.  
Nangu uSipoti uza aphethe isambreni  
ngomlomo. Ngathaba kwamambala.



Ilanga:



Ngavele ngasivula  
isambreni,  
ngasiphakamisa.

Sagijima saya ekhaya.  
Ngasinda ekugcineni.  
Ngithokoza uSipoti.

Faka umbala esithombeni.

Ukuzithabisa



Asitlole

Zijayeze amaledere alandelako. Kwanjisi tloka imitjho ngenwadini yakho ngokusebenzisa amagama angebhoksini lesilulu - magama.

Y Y

y y

Utijhere: Tlikitla

Ilanga



Asifunde



UNomakhuwa usicocela indaba yakhe yesinanja.

Besizihlalele sobabili noSipoti ekhaya. Gade sizidlalela esivandeni. Ngabona amafu aba bomvu. Bengicabanga kobana alizokuna izulu.

Atjhuguluka abanzima. Lana ngesinaja.

Bengithukile. Besingangebholo yegolfu. Kwaphuka yoke into. USipoti yena bekawagama amatje wesinanja.

Ngithe kuye, "Thogomela Sipoti." Ngizamile ukumbawa wabuye, waragela phambili. Ngamgijimisa bewalalela wawayekela.

Khabe silele ngaphasi kombhede, lana ngesinanja labe lathula.

Bekumamatje angange bholo yegolfu nasiphumako besele libalele.



Asitlola

Funda indatjana engehla bese uphendula imibuzo.

Konje phana uNomakhuwa usicocela ngokuduma kwezulu?

Awa, usicocela

Bekangangani amatje wesinanja?

Amatje

Wenza ini uNomakhuwa noSipoti ngesikhathi bafikelwa livalo?

Ba



Isilulu-magama

Funda amagama alandelako ulalele amatjhada.



mgile	mgawule	umgade
mbawe	mbone	mbize
phasi	phezulu	phakathi

Amagama  
atjhejiweko

alizukuna  
bengithi  
kweza



Asitlola

Zijayeze amaledere alandelako. Kwanjisi tloa imitjho ngencwadini yakho ngokusebenzisa amagama angebhoksini lesilulu-magama.

Amatjana wesinanja



Asitlola

Qedelela amagama la bese uwamadanise nesithombe esifaneleko. Sebenzisa amaledere la, azokusiza: a, e, i, u.



ums\_\_na

umkh\_lu

im\_no

id\_da

amanz\_\_



**Asenzeni lokhu**

Nikela iintombe lezi iinomboro zilandelane ukusuka keyoku-1 – 3 usitjengise ukulandelana kwazo. Bese ucocela umngani wakho indaba ecocwa ziintombe lezi.



**Asitlola**

Tlola umutjho ngesithombe ngasinye. Sebenzisa amanye wamagama alandelako azokusiza.

- itjhada
- elikhulu
- isininja
- amafu
- ukudlala
- ivalo

---



---



---



---



---







Ilanga:



Asitlole

Qedelela amagama la ukuze amadane neentombwe okungizo.  
Sebenzisa amaledere la, azokusiza.

vi ngwe rha ndlu lo dlhu

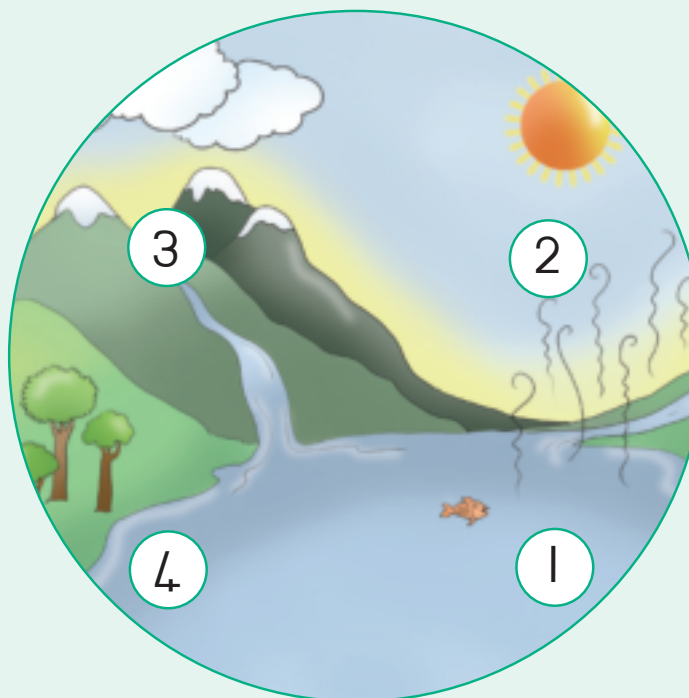
					
i ____	ibho ____	isito ____	isa ____	i ____ lo	idlhame ____



Ukuzithabisa

Qala isithombe bese ucoceka umngani kobana kwenzeka ini.

## Amanzi ayatjhugutjhuguluka



1	Ilanga likhanya elwandle nemlanjeni.
2	Amanzi akhuphukela esibhakabhakeni.
3	Amanzi bese enza amafu.
4	Amafuzenze izulu. Izulu lehlele ngemlanjeni nangelwandle.



Asifunde



NoSipoti akhange akghone  
ukukhamba phezulu kwalo  
ngombana limakhaza. Ugogo wathi  
angifake amakowusu ezandleni  
ngombana bengingenawo  
amadlhavu.

Bengithanda ukudlala ngerhwaba.

ULindi ubona irhwaba.

Bengivakatjhele ugogo.  
Uhlala le kude eentabeni.  
Kumakhaza khona.  
Bengilala ngeengubo ezinengi.  
Ngayokulala.  
Ngavuka ngakusasa ngithukile.  
Ngabona izinto zoke zimhlophe.  
Bekunelotho ebodeni,  
kunelotho emithini,  
kunelotho etjanini nendleleni.  
Nangilithintako,  
limakhaza kuba buhlungu imino.





Asitlola

Funda indatjana engehla bese uphendula imibuzo.



Bekakuphi uLindi nakazakubona isithwathwa?

ULindi \_\_\_\_\_.

ULindi wafaka ini ezandleni?

Wafaka \_\_\_\_\_ ezandleni.

Wabona ini uLindi nakavela emnyango?

Wabona \_\_\_\_\_.



Isilulu-magama

Funda amagama alandelako ulalele amatjhada.

ukwazi	mhlophe	indlu
ukwenza	umhluzi	indlela
ukwakha	mhleke	umkhandlo



Amagama  
atjhejiweko

kude  
uhlala  
izinto  
buhlungu



Asitlola

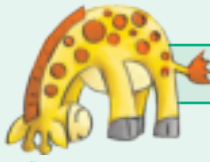
Zijayeze amaledere alandelako.

Kwanjesi tlola imitjho ngenwadini yakho ngokusebenzisa amagama angebhoksini lesilulu-magama.



Ngivakatjhela ugogo wami.

Ngj



Asenzi lokhu

Gwala isithombe salokhu uLindi akwenzileko lokha nakadlala erhwabeni.



Asitole

Tlola imitjho emibili ngesithombe osenzileko.  
Sebenzisa amanye wamagama alandelako azokusiza.

amakhaza

dlala

amadlhavu

kunomoya

kuthambile

isithwathwa




Asitlola

Qedelela amagama ngamaledere okungizo.  
Madanisa amagama neethombe okungizo.

				
utj__ni	ifasid__re	izungulekos__	ithand__	amadlhav__



Asitlola

Qedelela amagama la ngokufaka u- a, e, i, o, u bese uwaqondanisa neenthombe ezifaneleko.

- ingw\_\_
- umc\_\_sa
- ik\_\_mo
- ul\_\_le
- ith\_\_ni
- int\_\_thu



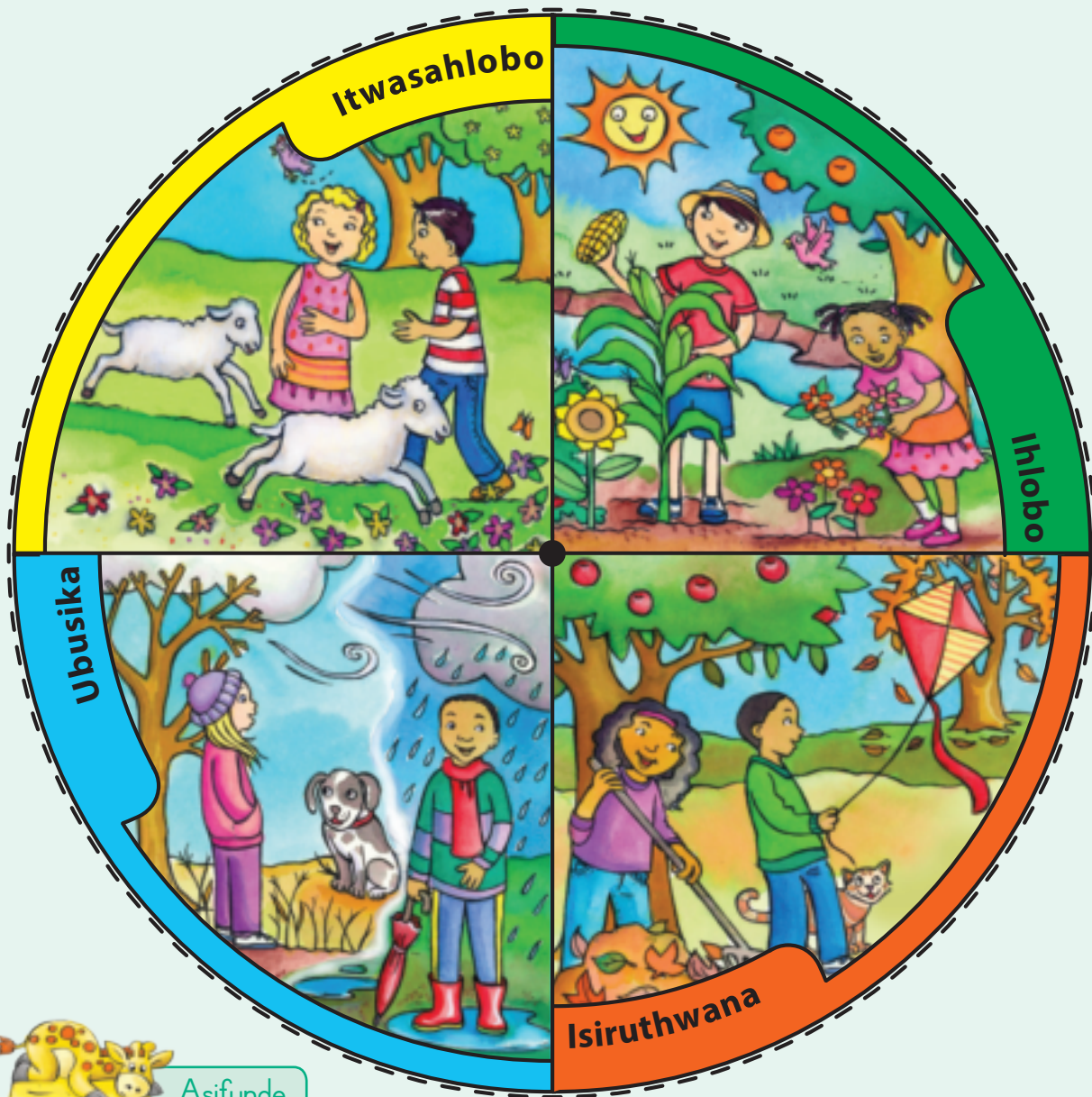
- ub\_\_rotho
- ibh\_\_lo
- \_\_nja
- ikh\_\_khe
- indl\_\_vu
- iw\_\_tjhi



Asitlola

Zijayeze amaledere alandelako. Kwanjisi tlola imitjho ngenwadini yakho ngokusebenzisa amagama angebhoksini lesilulu-magama.

Z z z z



Asifunde

UJabu

Angibuthandi ubusika. Bumakhaza.  
Angiwathandi amakhaza nangiya esikolweni.



U-Ann

Ngiyalithanda ihlobo. Siyaduda ehlobo.  
Ngithanda ukulalela umvumo weenyoni.

UBen

Ngiyakuthanda ukuthwasa kwehlobo.  
Kuba neenrhwahwa esizibeni.



Asitlole

Funda indatjana engehla bese uphendula imibuzo.

Ngubani ongawathandiko amakhaza?

Ulithandela ini ihlobo U-Ann?

Kungombana

Ukuthandela ini ukuthwasa kwehlobo uBen?

Kungombana kuba



Isilulu-magama

Funda amagama alandelako ulalele amatjhada.

isirhwarhwa	inyama	umvumo
rhaba	omunye	mvalele
rhorha	elinye	mvimbe

Amagama  
atjhejiweko

beku  
kuzokuba  
kungaba  
kufanele



Asitlole

Ngisiphi isikhathi somnyaka osithandako.

Blank writing area with dashed lines for handwriting practice.



Asitlole

Madanisa amagama neenthombe okungizo.



umndeni

amathuthumbo

inyosi

inyoka

umuntu



Asenzi lokhu

Qala iinthombe bese ucocela umngani wakho bonyana yini oyithandako nongayithandiko ngeenkhathi zomnyaka. Cocela umngani wakho kobana zimbatho ziphi ekufanele sizimathe ngeenkhathi ezithileko ezihlukahlukeneko. Nikela iinzathu.



Itwasahlobo



Ihlobo



Isiruthwana



Ubusika



Asitlole

Tlola imitjho ibe mine.

Thala umuda umadanise okungebhoksini lokuthoma nalokho okungebhoksini lesibili.

Angibuthandi ubusika ngombana

Inlwana ziba nabantwana

Ngithanda ihlobo ngombana

Ngesiruthwana

nakuthwasa ihlobo.

ngithanda ukududa.

bumakhaza.

amakari wemithi ayawa.



Asitlole

Tlola umutjho ngesikhathi somnyaka ongasithandiko naleso osithandako.

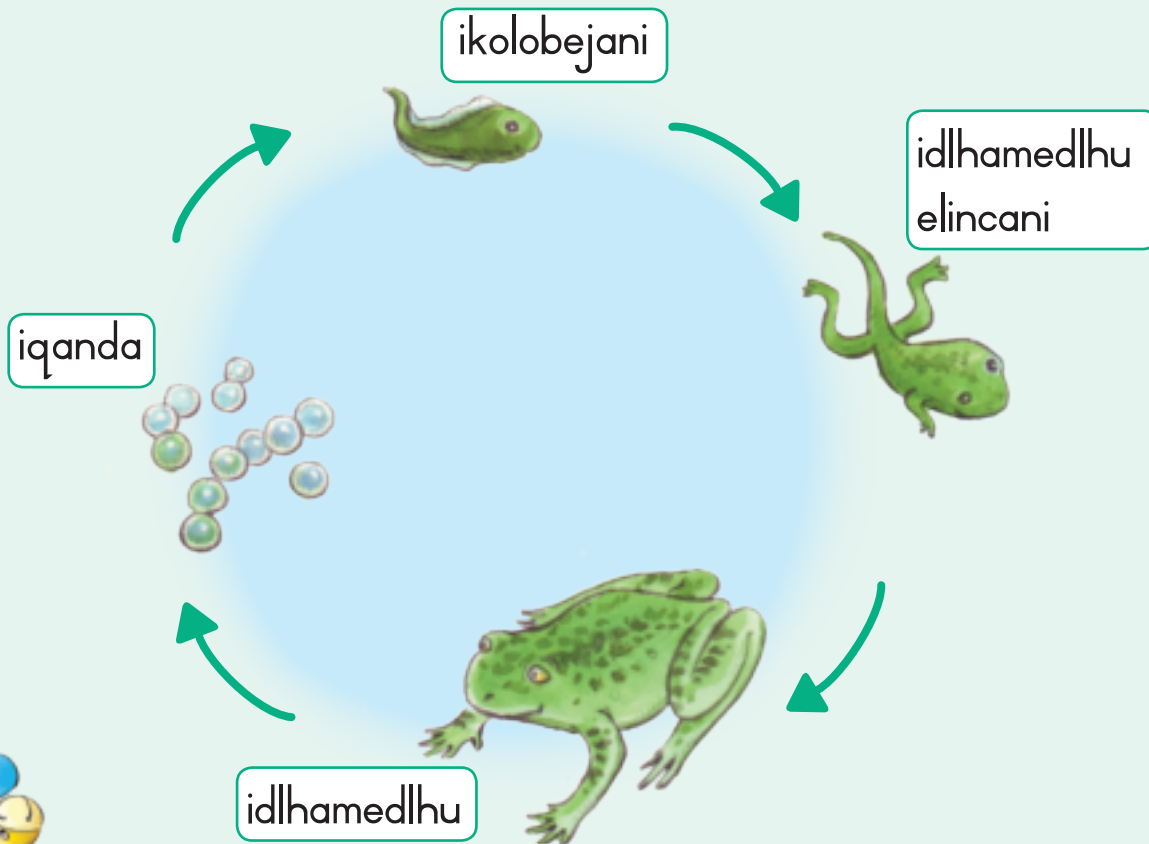
Ngithanda

Angithandi naku



Asikhulume

Cocela umngani wakho bonyana idlhamedlhu likhula bunjani lisuka eqandeni, liye ekolobejaneni libe lidlhamedlhu elincani elinomsila bese liba lidlhamedlhu.



Ukuzithabisa

Faka umbala esithombeni sedlhamedlhu.



## Amatshwayo wezulu



Libalele

Lithe phara phara ngamafu

Liyana

Lisibekele

Liyaduma

Linommoya



Asifunde

Funda ubujamo bezulu etjhadini, utjho bonyana ubujamo bezulu buzabe bunjani ilanga ngalinye.

## Ithebula lobujamo bezulu uMgwengeni

ngoSondo	ngoMvulo	ngeLesibili	ngeLesithathu	ngeLesine	ngeLesihlanu	ngoMgqibelo



Asitlola

Tlola iimpendulo zemibuzo elandelako.

Ithebula lobujamo bezulu leli ngelayiphi inyanga?	
Mangaki sewawoke amalanga enyangeni le?	
Malanga amangaki lapho libalele khona?	
Malanga amangaki lapho lizabe lithe pharaphara ngamafu khona?	
Lizokuna amalanga amangaki?	
Lizokuduma amalanga amangaki?	
Kuzokuba nommoya amalanga amangaki?	



Isilulu-magama

Funda amagama ulalele amatjhada. Ngemuva kwalapho bese uthatha amagama amahlanu wakhe ngayo imitjho ozoyitlola ngenwadini yakho.

ngena	yemba	sulwa
ingozi	yembatha	thulwa
ngalo	imbaji	lulwa



Amagama atjhejiweko

lezulu  
amalanga  
lapho



Asitlola

Zijayeze ukutlola amaledere alandelako. Kwanjesi tlola imitjho ngenwadini yakho ngokusebenzisa amagama angebhoksini lesilulu-magama.



Ubuyamo bezulu



Asenzeni lokhu

Gwala itshwayo lobujamo bezulu banamhlanje.

Gwala izembatho ozozembatha ngobujamo banamhlanje bezulu.



Asitlola

Tlola ibizo lomntwana elithoma ngeledere enye kalandelako ngetlasini lakho. Khumbula ukusebenzisa amagabdhahela nawutlola ibizo.

B

L

D

M

G

T

H

S

R

K

Ilanga:



Asitlolo

Sebenzisa amatshwayo (wokutlola) emitjhweni elandelako.  
Akube magabhadlhela, abongci kanye netshwayo lokubuzo.



niyathanda ukudlala nojabu nalibaleleko

uyajabula nakumakhaza

ilanga lakavelaphi lamabeletho lingojulayi



Asitlolo

Qedelela itheyibula lobujamo bezulu banamhlanje. Bese uzalisa ubujamo bezulu bamalanga ama-5 ezako.



NgoMvulo



Blank writing box with a dashed line for handwriting practice.

Blank writing box with a dashed line for handwriting practice.

Blank writing box with a dashed line for handwriting practice.

Blank writing box with a dashed line for handwriting practice.

Blank writing box with a dashed line for handwriting practice.

Blank writing box with a dashed line for handwriting practice.

Utijhere: Tlikitla

Ilanga



Asifunde

Namhlanje uJabu ulele  
isikhathi eside.

USipoti ube wakhwela  
phezulu kwakhe azange  
avuke.



Umma kaJabu ufike wamvusa.  
Wamcocisa azange ezwe.

Uvuke lapho uJabu warhabela  
ibhesi, kodwa yamtjhiya.

Ukhambe ngeenyawo waya  
esikolweni.

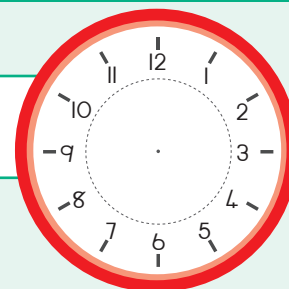


USipoti ukhambe naye.

Ufike ngemuva khulu  
kwesikhathi khulu esikolweni.

Sizwe utitjhere at asithi hi,  
“Sikhathi bani lesi, Jabu?”

## Sikhathi bani njenganje?



Asitlola

Funda indatjana engehla bese uphendula imibuzo.

Kubayini uJabu wafika muva esikolweni?

Kungombana

Uye ngani esikolweni uJabu?

UJabu

Kubayini angakayi ngebhesi esikolweni uJabu?

Kungombana



Isilulu-magama

Funda amagama ulalele amatjhada. Ngemuva kwalapho bese uthatha amagama amahlanu wakhe ngayo imitjho ozoyitolela ngencwadini yakho.

mveze	mcocele	izwa
mvuse	mcabange	ilizwe
imvu	mcolele	ilizwi



Amagama atjhejiweko

beka  
uzoku  
angahle  
kufanele



Asitlola

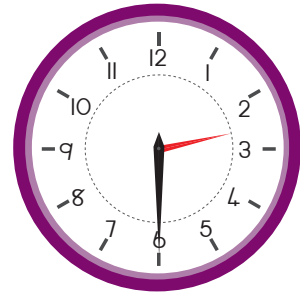
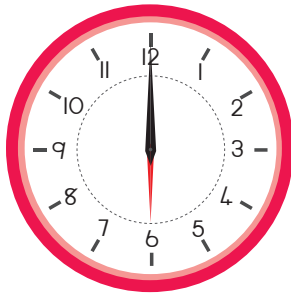
Zijayeze ukutlola umutjho olandelako. Kwanjesi tlola imitjho ngencwadini yakho ngokusebenzisa amagama angebhoksini lesilulu-magama.

Sikhathi bani?



## Asenzeni lokhu

Tjela umngani wakho bonyana umkhono omude ukhombise yiphi inomboro bese utjho bonyana omfitjhani ukhombise yiphi inomboro.



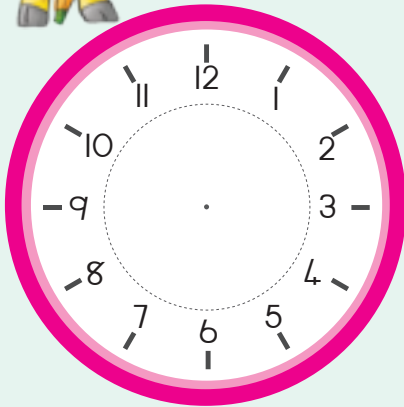
Qedelela ngama-iri namaminithi lapha omunye nomunye umkhono ukhombise khona.

umkhono omfitjhani	umkhono omude	umkhono omfitjhani	umkhono omude	umkhono omfitjhani	umkhono omude	umkhono omfitjhani	umkhono omude

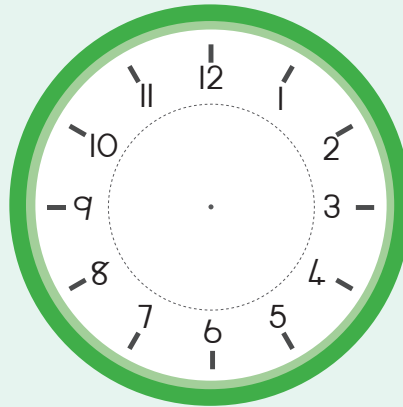


## Asitlole

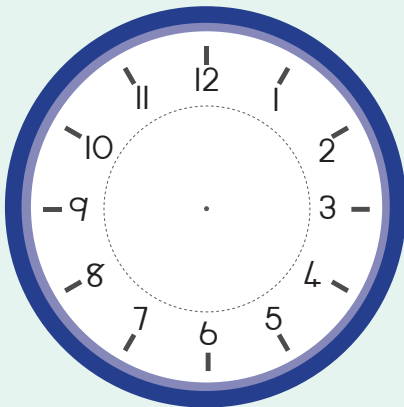
Gwala imikhono yewatjhi.



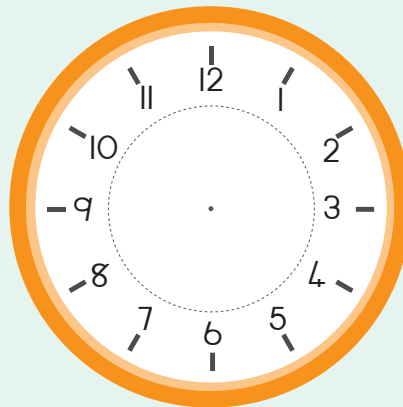
1 poro



6 poro



3 poro






9 poro



Asitlola

Qedelela ngeenomboro eenkhaleni

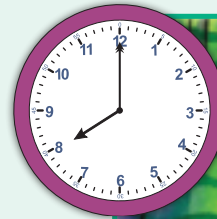
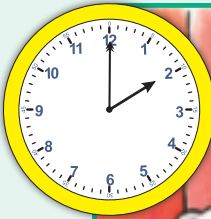
	<p>Ngivuka ngeri _____ poro.</p>
	<p>Ngilala nge-iri _____ poro.</p>
	<p>Isikolo singena ngeri _____ poro.</p>



Ukuzithabisa

Tlola iinkhathi ezihlukeneko emawatjhini la bese utjela umngani wakho kobana sikhathi bani. Sika iwatjhi ngaphandle kwencwadi bese uyifake imikhono. Tjengisa umngani wakho iinkhathi ezihlukahlukene.





Asifunde



UJabu uvuka nge-iri lesithandathu poro.



UJabu ukhwela ibhesi nge-iri lekhomba poro.



UJabu ubuyela ekhaya ngeri lesibili poro.  
 UJabu udla nge -iri lesithandathu poro.  
 UJabu ulala nge -iri lobunane poro.



Asitlola

Funda indatjana engehla bese uphendula imibuzo.

UJabu uvuka ngesikhathi bani?

Uvuka

UJabu ukhwela ibhesi ngesikhathi bani?

Ukhwela ibhesi

UJabu ulala sikhathi bani?

Ulala



Isilulu - magama

Funda amagama ulalele amatjhada. Ngemuva kwalapho bese uthatha amagama amahlanu wakhe ngayo imitjho ozoyitlola ngencwadini yakho.

i-iri	inani	tshaya
irula	ubunane	tshima
iranda	amanani	itshela

Amagama atjhejiweko

beka  
uzoku  
angahle  
kufanele



Asitlola

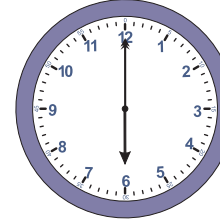
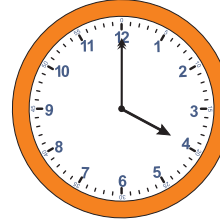
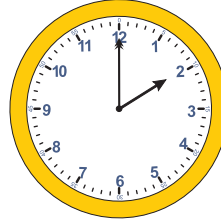
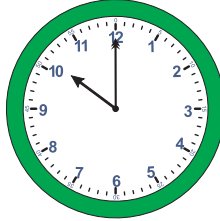
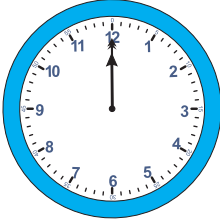
Isikhathi sithi

# Kwenzeke sikhathi bani?



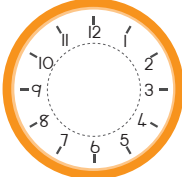
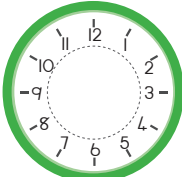
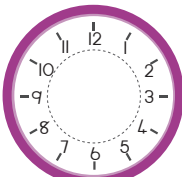
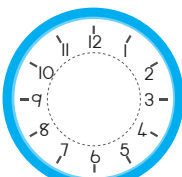
**Asenzeni lokhu**

Madanisa amawajhi la nesikhathi esifaneleko.



**Asitlola**

Tlola isikhathi bese ugwala imikhono yewatjhi ukukhombisa iinkhathi ezifaneleko.

Ngesikhathi bani	Isikhathi ewatjhini	Sitlola lapha
Ngivuka nge -iri		
Ngiya esikolweni nge -iri		
Ngifika ekhaya nge -iri		
Ngidla nge -iri		



**Asenzeni lokhu**

Khombisa iinkhathi ezahlukeneko ewatjhini olisikileko.





Ukuzithabisa

- i-iri      irula      emba      mbize      irhwaba      indlu
- mveze      mvuse      imbobo      inyama      indlela      indlovu
- mvale      ngena      ubumnyama      ugogo      mcocele      mjamele
- ingozi      ingubo      igodo      elinye      isigidi      vela
- mcuphe      mcocele      gabhoga      mjezise      ginya      gwinya
- mcobe      rhwaya      mcabange      bhoda      ilizwi      umuntu
- phoceka      ukucoca      bhula      intwala      mema      iswidi
- mjikijele      umvumo      umntwana      into      indlela      iimbandana
- qhula      ithayi      ilizwe      dliswa      thusa      letha
- isitaputapu      ivilo      jamela      juluka      phola      phepha
- ivalo      izwa      indlu      itlasi      hloma      uphephile
- iswazi      umma      zwela      uzwile      mdedele      ihloko
- mbambe      indlovu      izwa      ilizwe      ehle      hleka
- mcocise      itjhila      lulwa      sulwa      iphela      mdudule
- ephondweni      poro      thulwa      thwala      invubu      invana
- mcocele      mbatha      ilizwi      thandathu      emva      iphaphu

### Iphaliswano lamagama

Wena nabangani bakho khethani umzila womjarho enizokuba nawo. Sebenzisa iwati jhi ukubona bonyana kukuthatha isikhathi esingangani ukufunda amagama asemzileni wakho. Ningathoma ukufunda ngesikhathi esifanako. Phendulani imizila nifunde godu. Isebenziseni yoke imizila nigijimisane ukuze nijaye. Athaleleni amagama anjiamisako emizileni ukuze nikwazi ukuzijayeza wona. Thoma lapha.





Asifunde



## Iindaba Ezilihlaya

USipoti ujame noKunzwa ukatsu. Baseduze nomuzi wakaGunzwa ikhondlo. Babawa uGunzwa bonyana aphume. Kufika uKhonzwa ikomazi. "Nenzani lapha?" kubuza uKhonzwa.

"Sizokubawa aboGunzwa banoKunzwa basayine bonyana uKunzwa angekhe asamudla uGunzwa," kuphendula uSipoti. Kuvele uGunzwa ngehloko. "He! Nilethe uKhonzwa bonyana ngizodliwa nguye nje!"

Kukhulume uSipoti. "Awa, sifuna nilise nina ninoKunzwa ukudlana."

"Angimudli ukatsu mina. Vele unenyama embi," kuphendula ikhondlo.



Asitlola

Funda indatjana engehla bese uphendula imibuzo.

Ukhamba nobani uSipoti namhlanje?

USipoti ukhamba

Bayaphi?

Baya

Ngubani ofika kibo basakhuluma?

Kufika

Bazokwenza ini emgodini aboSipoti?

Bazokukhuluma



Isilulu-magama

Funda amagama alandelako ulalele amatjhada.



Amagama  
atjhejiweko

uKunzwa	uGunzwa	uKhonzwa	hlanzwa	funzwa	setjenzwa
konje	inja	nje	njalo	kunjalo	njani

nomuzi  
igundwane  
aphume



Asitlola

Zijayeze amaledere alandelako.

Kwanjesi tlola imitjho ngencwadini yakho ngokusebenzisa amagama angebhoksini lesilulu-magama.



Imbuzi imbethe imbaji.



Asenzi lokhu

## Iindaba Ezilihlaya

Cocela abangani bakho iindaba ezitlolwe nguwe. Coca ngeendaba ongazithumela ephephandabeni olithandako.



Asitole

Tlolela iphephandaba lakho.

Ibizo lephephandaba

Ilanga

Zithini iindaba zakho?

Khabe kwenzeka ini?

Gwala isithombe ngendaba yakho.

# Isihlathululi-magama sami

A  
a

Blank writing area for uppercase A and lowercase a.

Blank writing area for uppercase A and lowercase a.

G  
g

B  
b

Blank writing area for uppercase B and lowercase b.

Blank writing area for uppercase B and lowercase b.

H  
h

C  
c

Blank writing area for uppercase C and lowercase c.

Blank writing area for uppercase C and lowercase c.

I  
i

D  
d

Blank writing area for uppercase D and lowercase d.

Blank writing area for uppercase D and lowercase d.

J  
j

E  
e

Blank writing area for uppercase E and lowercase e.

Blank writing area for uppercase E and lowercase e.

K  
k

F  
f

Blank writing area for uppercase F and lowercase f.

Blank writing area for uppercase F and lowercase f.

L  
l

# Isihlathululi-magama sami

**M**  
**m**

**S**  
**s**

**N**  
**n**

**T**  
**t**

**O**  
**o**

**U**  
**u**

**P**  
**p**

**V**  
**v**

**Q**  
**q**

**W**  
**w**

**R**  
**r**

**X-Z**  
**x-z**







