

Kubuyeketiwe
futsi kwahlelenjiswa
ngekwe-CAPS

Libanga

2



Emakhono Ekuphila
SISWATI
Incwadzi 1
Emathemu 1 & 2



ISBN 978-1-4315-0260-8



- Workbooks available in this series:
- Grade R
(in all official Languages);
 - Literacy/Home Language Grades 1 to 6
(in all 11 official Languages);
 - Mathematics Grades 1 to 3
(in all 11 official Languages);
 - Mathematics Grades 4 to 9
(in Afrikaans and English);
 - Life Skills Grades 1 to 3
(in all 11 official Languages); and
 - Grades 1 to 6 English First Additional
Language.



LIFE SKILLS IN SISWATI
GRADE 2 – BOOK 1
TERMS 1 & 2
ISBN 978-1-4315-0260-8
14th Edition
THIS BOOK MAY NOT BE SOLD.

Ligama:

Liklasi:



basic education
Department:
Basic Education
REPUBLIC OF SOUTH AFRICA

Lokucuketfwe

Ithemu 1

likhasi

- 1 Sidzinga kudla lokunemphilo kuphila2
- 2 Emanti asinika imphilo4
- 3 Songa emanti6
- 4 Umoya lohlobile usinika emandla8
- 5 Mine nalabanye 10
- 6 Bantfu lesiphila nabo 12
- 7 Akuphele bubheva..... 14
- 8 Sonkhe sikhethsekile 16
- 9 Sitiva njani 18
- 10 Bantfu labakhubatekile20
- 11 Bonkhe bantfwana bakhethsekile22
- 12 Lichawe lami24
- 13 Kuhlanta emanti26
- 14 Indlela-mphilo lephilile28
- 15 Kudla lokusheshe konakale nalokuphuta konakala.....30
- 16 Emalanga eNkholelo nalamanye lakhethsekile.....32

Ithemu 2

likhasi

- 17 Tikhatsi temnyaka34
- 18 Tikhatsi temnyaka letine36
- 19 Sikhuluma ngetikhatsi temnyaka38
- 20 Kwembatsela simo selitulu40
- 21 Umtselela wetikhatsi temnyaka42
- 22 Kuhlanyela sihlahla selibhontjisi.....44
- 23 Tilwane tasepulazini.....46
- 24 Epulazini48
- 25 Tilwane tasendle50
- 26 Tibhaca njani tilwane52
- 27 Tilwane tasemantini54
- 28 Tidalwa tasemajukujukwini elwandle.....55
- 29 Buciko betilwane56
- 30 Tilwane letetfwala emakhaya ato58
- 31 Tilwane letitakhela tindlu tato....60
- 32 Sichazamagama sami62



Nkhsht. Angie Motshekga, iNdvuna yeMfundvo Sisekelo



Dkt Reginah Mhaule, liphini leNdvuna yeMfundvo Sisekelo

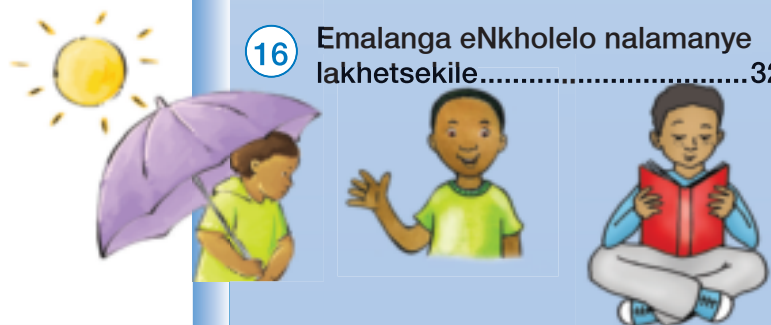
Letincwadzi tekusebentela tikhicitelwe bantfwana baseNingizimu Afrika ngekuholwa yiNdvuna yeTemfundvo Sisekelo. Nkhsht Angie Motshekga akanye neLiphini lakhe Dkt Reginah Mhaule.

LeTincwadzi Tekusebentela takaRainbow tiyincenye yemitamo yaleLitiko leTemfundvo Sisekelo yekutfufukisa bafundzi baseNingizimu Afrika emabangeni ekucala lasitfupha ekufundza. Njengalomunye wemigomo lehamba embili eLuhlelweni lweKusebenta lwaHulumende, lomsebenti ukhokhelwe ngesihle Silulu seTimali saVelonkhe. Ngenca yalokusekelwa ngetimali, leLitiko leTemfundvo liphumelele kwakha letincwadzi ngato tonkhe letilwimi letisemtsetfweni kulelive.

Siyetsemba kutsi bothishela batatitfolo tilusito kakhulu letincwadzi tekusebentela basafundzisa malanga onkhe kute bafundzi bakhone kucedza luhlelo lwabo lwekufundza. Setame, ngekuophelela lokukhulu, kusita thishela kuleyo naleyo ncenye yemsebenti, ngekusebentisa timphawu letitifombe kukhombisa umfundzi loko lokumele akwente.

Siyetsemba bantfwana nabo batakujabulela kusebentisa letincwadzi basachubeka nekukhula nekufundza; nekutsi bothishela batawutfokota kanye nabo.

Sifisela bothishela nebafundzi imphumelelo basachubeka nekusebentisa letincwadzi tekusebentela.





Libanga

2



Emakhono Ekuphila
SISWATI
Incwadzi I



Lencwadzi ya:



Sidzinga kudla lokunemphilo kute siphile



Asifundze

Imitimba yetfu idzinga kudla lokunemphilo khona sitowukhula. Sifute kudla kudla lokuphuma kuwo onkhe emaseko malanga onkhe. Sidzinga kudla kudla lokunemphilo kute sitoba nemandla lanele kwenta konkhe lesifanele sikwente. Uma singadli kudla lokunemphilo, singahle sigule kakhulu.

Emaseko lasihlanu ekudla

Tinhlavu nemikhicito yato

Tibhidvo netitselo

Labanye banfufu batidli-tibhidvo. Loku kusho kutsi abayidli inyama noma ngabe yaluphi luhlobo. Ikakhulu kudla kwabo kubuya emasekweni lama-4 ekudla.

Inyama, inhlanti, inkhukhu, emantongomane nemabhontjisi

Emanoni nemafutsa

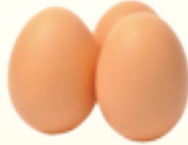
Imikhicito yelubisi

Lusuku:



Asente loku

Coca nemngani wakho ngekutsi ngukuphi kuloku kudla lokunemphilo. Kubiyele.



Asibhale

Yenta sengatsi uya etitolo namake wakho kuyowutsenga kudla kwesidlo sakusihlwa. Yakha luhla lwekutsenga kudla lokunemphilo lokutawudliwa ngumndeni wakho.

LUHLA LWEKUTSENGA



Emanti asinika imphilo



Asikhulume

Kungani sidzinga emanti?
Bantfu, tilimo netilwane
kudzinga emanti kuhlala
kuphilile. Emanti atfwala kudla
lesikudlako kuye etindzaweni
letehlukene temitimba yetfu.
Abuye asite imitimba yetfu
kususa kungcola.



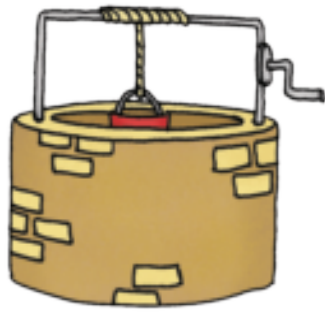
Asente loku

Malanga onkhe sisebentisa emanti emakhaya etfu. Cocela umngani wakho ngato tonkhe tintfo longaticabanga lesisebentisa emanti kuto. Ubese udvweba titfombe leti-4 kukhombisa kutsi siwasebentisa kanjani emanti. Bhala umbhalo-nchazelo ngenhla kwesitfombe ngasinye uchaze kutsi sikhuluma ngani sitfombe.

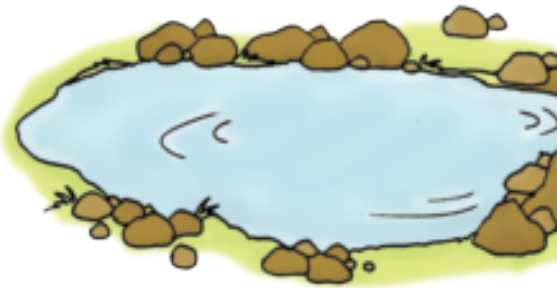
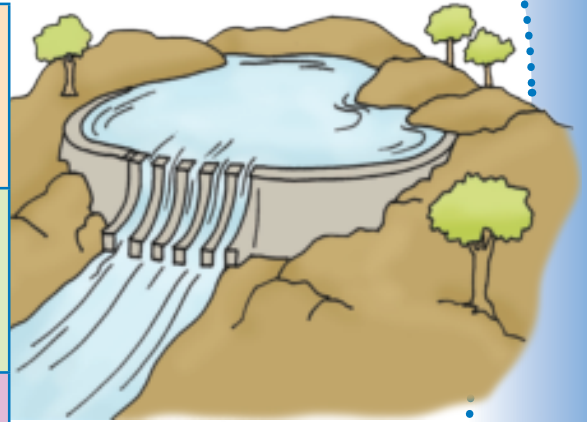


Asibhale

Siwatfolaphi emanti? Dvweba umugca kuchumanisa ligama ngalinye nesitfombe lesifanele.



lidamu
siphehlamanti
umfula
lichibi
siyalu



Kwente ngaphandle

Ngembi kwekutsi wente nobe ngumuphi umshukumo wentimba ngaphandle, cala utelule njengelikati. Loku kutawenta kube lula kutsi umtimba wakho unyakate. Phindza utenwebe emva kwemshukumo kuphotisa umtimba. Loku kutakusita kutsi ungahlaselwa buhlungu bemisipha.

- Zuba njengesicoco. Lingisa umsindvo wesicoco.
- Phoselanani ibhola nobe sikhwama bhontjisi. Yigendze/sigendze.
- Nyalo-ke phosa ibhola nobe sikhwama bhontjisi etulu bese uyakugendza.
- Tfwala uyekelele sikhwama bhontjisi enhloko yakho bese nicudzelana ngekushakutela nemngani wakho. Bona kutsi ungasigcina sikhatsi lesinganani lesikhwama singakawi.



Thishela:
Sayina:
Lusuku:



Songa emanti



Asikhulume

Emanti aligugu kakhulu, ngako-ke kufute singawasaphati nje. Coca nemngani wakho ngetindlela letehlukene lesingonga ngato emanti.



Asibhale

Bhala phansi imibono lemibili yekonga emanti kuletikhala letilandzelako.

1. _____

2. _____



Asente loku

Sebentisa emakhilayoni akho kwakha iphosta lemibalabala ngekonga emanti. Iphosta yakho kufute ikhutsate labanye konga emanti. Nase uyentile, yikhombise bangani bakho.





Phuma

Ase sidlale lomdlalo lotsi "Sikhatsini, Mnu. Mphisi?"

Munye wenu kufute abe yimphisi.

Niketanani ematfuba ekubutana kutsi
"Sikhatsini, Mnu. Mphisi?"

Njalo nawubuta, imphisi kufanele isho kutsi
ngubani sikhatsi.

Kodvwa, uma imphisi itsi "sikhatsi sekudla!",
itawusuka ikugujimise. Kufute ubaleke
isengakakubambi.



Nyalo-ke tfolani emahhulahhubhu ekudlala.

Ninemngani wakho kufanele niniketane
ematfuba ekuhamba niphumele ngale kuletikhala
talehhulahhubhu

Cala uhambe kulehhulahhubhu ngetinyawo takho.

Ubese-ke uhamba ngetandla takho.

Ubese ubamba ihhulahhubhu ime mpo umngani
wakho aphumele ngale kulo. Niketanani ematfuba
kwenta loku.



Kwekugcina,
ngemacembu
alaba-4 ticecsheni
bese neffula umdanso
waseNingizimu
Afrika.

Thishela:
Sayina:
Lusuku:

Umoya lohlobile usinika emandla



Asifundze

Umoya lesiwuhogelako une-oksijini. Loku kusita imitimba yetfu kutsi isebentise kudla lesikudlako. Sibese sitfola emandla ekuphila. Uma sihogela umoya longcolile, imitimba yetfu ayikhoni kusebenta kahle.



Asibhale

Hlala nebangani bakho. Ninonkhe, gcwalisani letikhala letingentasi:

Ngidzinga umoya lohlobile ngoba _____

Uma umoya ungcolile _____

Umoya ungcoliseka uma _____

Lesingakwenta kugcina umoya uhlobile:

1. _____

2. _____



Asifundze

Bantfu badzinga lilanga kute bajabule futsi babe nemphilo. Bantfu badzinga lilanga kuhlala baphilile. Lisita imitimba yetfu kutsi yakhe Vithamini D. Siyawadzinga lamavithamini kwakha ematsambo lacinile. Kushisa kakhulu kungaba kubi nako. Siyasha sikhumba sibe buhlungu. Ubosebentisa sivikela-linga kuvikela sikhumba sakho elangeni.



Asibhale

Cwawalisa letikhala ngentasi.

Ngingaphepha elangeni lelishisa kakhulu uma ngi:

1. _____
2. _____
3. _____



Asihlebele ingoma

Hlabela lengoma bese ushaya tandla ulandzele sigci.

**Wen'ukukhanya
Kwami kwelilanga
Uyangijabulisa
Nangabe lisibekele.
Angeke sew'kholwe,
Ngikutsandza kangaka.
Ungangemuki
Kukhanya kwami.**



Ubosebentisa sivikela-linga kuvikela sikhumba sakho elangeni.



Mine nalabanye



Asikhulume

Sonkhe sitsandza kuba nebangani labahle. Wati kanjani kutsi umuntfu angumngani lomuhle?



Asibhale

Kulesikhala lesi ngentasi, yakha luhla lwetintfo letenta umuntfu abe ngumngani lomuhle.

1. _____
2. _____
3. _____
4. _____



Asibhale

Cabanga ngalemibuto bese ubhala phasi timphendvulo takho.

Bangaki bangani lonabo?
Litsini ligama lamunye webangani bakho labakhulu?
Sesidze kangakanani sikhatsi nibangani?
Yini lekhetsekile ngalomngani wakho?



Asikhulume

Hlala nemngani wakho bese nicoca ngalemisho. Faka (✓) ebhokisini uma kuliciniso, ufake siphambano (✗) uma kungasilo liciniso.

Luhla-lwekuhlola bungani

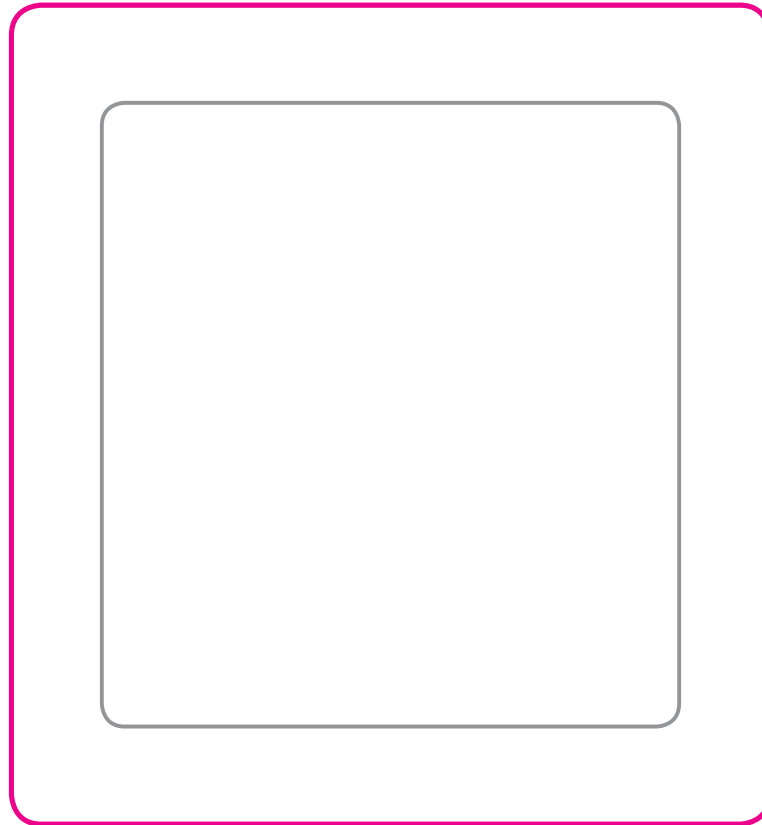
Faka ✓ nobe ✗

Umngani wami uyanginakekela.	
Umngani wami uyangisita.	
Umngani wami wabelana nami.	
Umngani wami akalwi nami.	



Asente loku

Cabanga ngentfo lengenta umngani wakho ative akhetsekile. Ubese udvweba sitfombe sayo kuleliflemu. Khumbula kuhlobisa kahle iflemu yesitfombe. Nase ukwentile loku, coca ngemibala lepholile nalefutfumalako loyisebentise esitfombeni sakho.



Asibhale

Bhala imisho lemi-2 ngesitfombe sakho.



6

Bantfu lesiphila nabo



Asikhulume

Bukani letitfombe. Cabangani ngalokwentiwa bangani labahle, nibese nikhuluma ngako ecejini lakho. Nyalo-ke cabanga ngalokwentiwa bangani lababi. Faka (✓) esitfombeni ngasinye lesikhombisa bungani lobuhle, ufake siphambano (✗) kuleto letikhombisa bungani lobubi.



Asifundze

Fundza umusho ngamunye bese ufaka umbala kuloBuso lobumele Yebo 😊 nobe Cha ☹️.



<p>Ngingumngani lomuhle.</p>		
<p>Ngiyabanakekela bangani bami.</p> 		
<p>Nginebubele kulenginabo eklasini.</p>		
<p>Lenginabo eklasini banebubele kimi.</p>		
<p>Nginenhlonipho kubantfu labasedvute nami.</p> 		



Asinyakate

Asidlale "Mani esitfuntini sami".

Wena nebangani bakho kufute nizame kunyatsela titfunti tenu lomunye nalomunye. Niketanani ematfuba kubona kutsi tingaki titfunti wena longatinyatsela. Wena ungazama kuloku uvimbela umngani wakho kuma esitfuntini sakho.



Thishela:
Sayina:
Lusuku:





7

Abuphele bubheva

Ithemu 1 – Liviki 4 – Lishadi lekusebentela



Asibhale

Buka sitfombe ngasinye.

Yini lobewungayenta kube bewungumntfwana lohlushwa tibheva? Eceleni kwesitfombe ngasinye, bhala umusho munye ngekutsi kufute sibaphatse njani labanye bantfu.









Asente loku

Enta silinganiso semdlalo nemngani wakho ngemntfwana lohlushwa sibheva. Ubese uyasho kutsi singentani kuvikela bubheva.

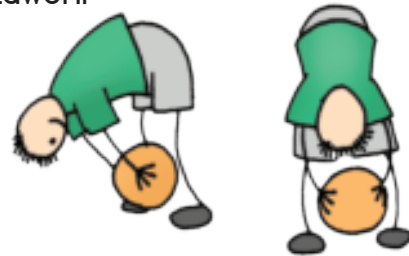


Kwente ngaphandle

Tihleleni nibe ngemacembu la-5.

Yakhani umugca nengcise ibhola iye kulomunye nalomunye. Bonani kutsi nguliphi licembu lelikhonako kwendlulisela ibhola kufika ekugcineni kwemugca kucala. Uma senikwentile loko, zamani kwendlulisa ibhola iye etindzaweni letehlukene:

- Yendlulisa ibhola emkhatsini wemilente yakho iye kumfundzi losemvakwakho.
- Yendlulisa ibhola ngetulu kwenhloko yakho iye kumfundzi losemvakwakho.
- Yendlulisa ibhola ngesancele sakho iye kumfundzi losemvakwakho.
- Yendlulisa ibhola ngesekudla sakho iye kumfundzi losemvakwakho.
- Nyalo-ke phoselanani ibhola nibone kutsi ningayigendza kangaki.





8

Sonkhe sikhetsekile

Ithemu 1 – Liviki 4 – Lishadi lekusebentela



Asikhulume

Buka letitfombe bese uyasho kutsi labantwana ngamunye bafana ngani. Shano nekutsi behluke ngani.





Asifundze

Yentani lomsebenti lolandzelako ecejini. Buka bonkhe labanye bantfwana eklasini lakho. Ubese ufundza umusho ngamunye kulandzelako. Uma umusho uliciniso, faka (✓) ebhokisini ngesekudla, kantsi uma umusho ungesilo liciniso, faka siphambano (✗).

	Faka ✓ nobe ✗
Ngabe bafana nemantfombatana babukeka ngekufana?	
Ngabe bonkhe banembala wetinwele lofanako?	
Ngabe bonkhe banembala wemehlo lofanako?	
Ngabe bonkhe banetandla letilinganako yini?	
Ngabe bonkhe bafundzi badze lokulinganako yini?	



Asikhulume

Uyabona nje kutsi sonkhe sehlukile? Futsi uyabona yini kutsi siphindze sifane sonkhe? Cocani ngetindlela lesifanana ngato.



Asidvwebe

Dvweba sitfombe sakho. Ubese usebentisa sipenda-mlomo kwakha imigca-munwe yakho yelikhetselo edvute neflemu yesitfombe.



Bewati-nje kutsi kute namunye umuntfu emhlabeni lonemigca-munwe yakho?
Wena ukhetsekile futsi wehlukile!



Sitiva njani



Asikhulume

Cocisanani nodvwa nichazelane kutsi nitiva kanjani uma lokuhle kwenteka kini. Nyalo-ke cocisanani ngekutsi nitiva njani uma lokubi kunehlela. Loku lesikuvako sitsi yimiva. Gcwalisa kutsi bativa njani labasemabhokisini.











Asibhale

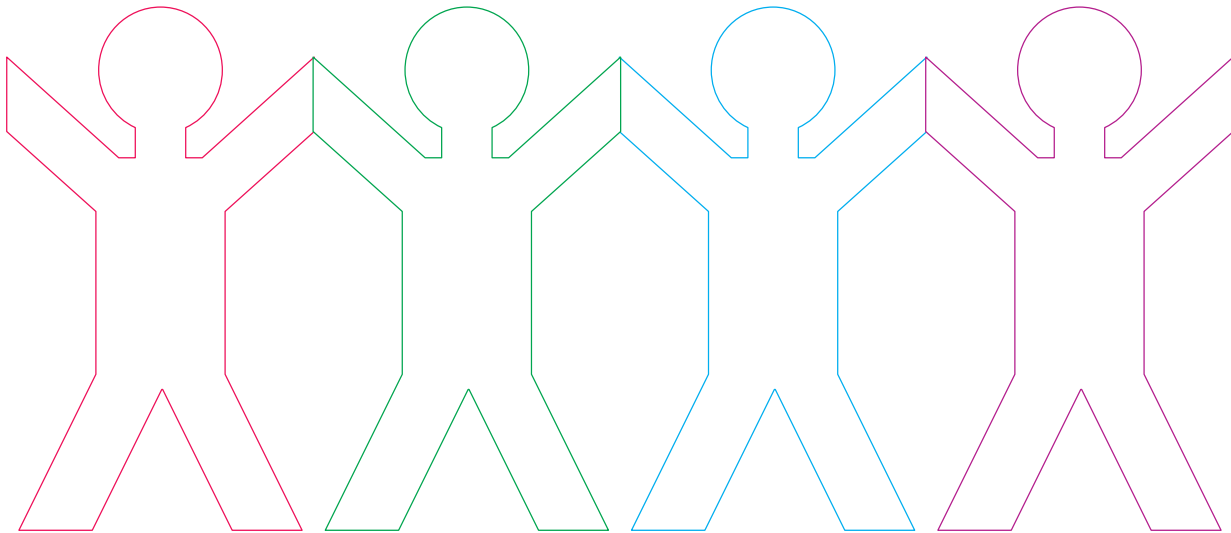
Bhala timphendvulo talemisho lengentasi.

Yini lekwenta wetsabe?
Yini lekwenta udzangale?
Yini lekwenta wesabe?
Yini lekwenta ujabule?



Asente loku

Dvweba ufake umbala kulabangani lababambene. Zama kwakha umdoli ngamunye abukeke ehluKile, kukhombisa kutsi sonkhe sehlukile kantsi sikhethsekile. Nase ukwentile loko chubeka usika kahle titfombe tebangani lababambene ekhasini lelisemkhatsini nalencwadzi. Yakha mdoli ngamunye ehluke kulabanye bese ummisa edesikini lakho njengesikhumbuto kutsi sonkhe sehlukahlukene.



Kwente ngaphandle

Yenta umtimba wakho ube mkhulu kakhulu.
 Ubese uzama kwenta umtimba wakho ube mncane kakhulu.
 Nyalo-ke zama kuwenta ube mudze kakhulu.
 Kwekugcina zama kuwenta ube mfisha kakhulu.





Asikhulume

Buka letitfombe.

- Ngutiphi tinhlobo letehlukene tekukhubateka lotibonako?
- Ngabe umntwana ngamunye kulaba usebentisa ini kutisita?
- Wena ucabanga kutsi tinkinga tini labantwana lababa nato malanga onkhe etimphilweni tabo?
- Cocani ngekutsi singabasita kanjani.



Asibhale

Buka letitfombe ngentasi.
Cedzela lemisho.

Rosemary akakhoni kuhamba.

Usebentisa _____
kuhamba-hamba.

situlo-ncola



Thabo akaboni usebentisa

kutfola lapho aya khona.

inja lesitako





lithuluzi lekuva



Peter akeva.

Usebentisa _____
kumsita kuva.



lulwimi-timphawu



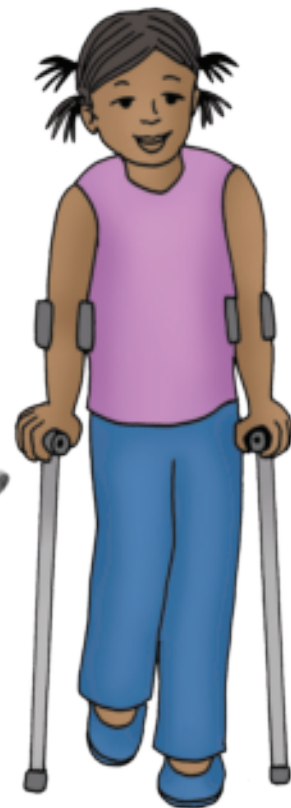
Jabu akakhoni kukhuluma.

Usebentisa _____
kuchumana nebantfu.



emabhoko

Nomsa usebentisa _____
kumsita kuhamba.



Asente loku

Sebentisa lubumba nobe inhlama
yekudlala kubumba ivasi nobe inkomishi.



Bonkhe bantfwana bakhetskile



Asikhulume

Behluke ngani kuwe laba bantfwana? Bafana ngani?



Asifundze

Bantfu mhlaba wonkhe bagubha tinsuku letikhetskile temaholide.



Sonkhe sitsandza kudlala sihlabele.

Sonkhe sidzinga kudla.

Sonkhe kufute siye esikolweni.

Uma sigula, sonkhe sidzinga kuya kudokotela.

Sonkhe kufute sihlobe sibe nebunaka.

Akukafaneli sitfole imisebenti.

Sonkhe sisebantfwana.



Asibhale

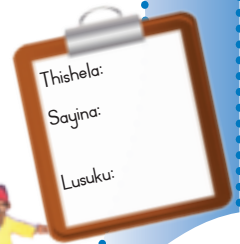
Buta bangani laba-3 lembuto. Gcwalisa timphendvulo tabo kuletikhala ngentasi.

Gcwalisa emagama ebangani bakho			
Iyini inkholelo yakho?			
Ngimiphi imigubho lebalulekile loba nayo?			
Nidla ini ngalolosuku?			
Luhlobo luni lwetembatfo letikhetsekile lotigcokako			
Nilugubha nabobani lolusuku?			



Asente loku

Ase ubuke sitfombe.
 Libalave lemhlaba wetfu. Uyabona nawe kutsi umhlaba wetfu unemhlabatsi nelwandle. Faka umbala loluhlata sasibhakabhaka elwandle. Faka umbala lobubendze emhlabeni. Dvweba tinhlanti letimbalwa elwandle.



Lichawe lami



Asikhulume

Cocani ngekutsi ngabe bakhona yini bantfwana labakhubatekile esikolweni sakho.

Yini lengentiwa sikolo kubasita basesesikolweni? Ngabe bantfu labakhubatekile bangaba bomphetsa?



Asifundze

Lamanye emachawe anakhubateka. Babalandzelwa betfu lesibakhontile. ENingizimu Afrika, banyenti bomphetsa betemdlalo labakhubatekile. Kukhona yini lobatiko labakhubatekile lababomphetsa emidlalweni? Natalie du Toit walahlekelwa yincenye yemlente wakhe wangesancele engotini yesidududu. Uhamba ngemlente wekufakwa kodwa ubhukusha asebentisa munye vo, umlente.



Asikhulume

Cocani ngebantfu labakhubatekile kodwa labenta tintfo letisimanga. Cabangani ngaloku:

- Bantfu labangaboni badlala tinsimbi tekushaya ingoma. Ngabe kukhona lomatiko nje?
- Bantfu labangeva babhala tingoma. Unganiketa sibonelo nje?





Asibhale

Kulesikhala ngentasi, niketa imininingwane ngelichawe lakho nobe umlandzelwa.

Lichawe noma umlandzelwa wami ngu:

Dvweba sitfombe selichawe noma umlandzelwa wakho. Bhala emagama eceleni kwesitfombe sakho lachaza lomuntfu. Tibonelo unemusa, uyasitana, unesibindzi, uyatsandzana.

Ungaba lichawe njani? Cocisana nemngani wakho ngemibono lonayo. Nyalo-ke bhala indzaba lapho khona uba lichawe. Cwwalisa lapha ngentasi:

Ngalelinye lilanga nga

Ngabese ngincuma ku

Ngabese

Kanjalo ngagcina sengilichawe.



Kuhlanta emanti



Asifundze

Ase ubuke ingilazi yemanti.

Kukhona nje lokubonako ekhatsi kuyo?

Cha, awukhoni. Kodvwa bewati-nje kutsi ngaletinye tikhatsi kuba nemagciwane emantini? Lamagciwane mancane kakhulu akabonakali nje ngeliso lenyama. Uma unganatsa emanti ungakawasusi kucala lamagciwane, ungatfola kugula lokubi. Sidzinga kwenta sicinisekiso kutsi emanti lesiwanatsako ahlobile futsi acwengekile.



Asikhulume

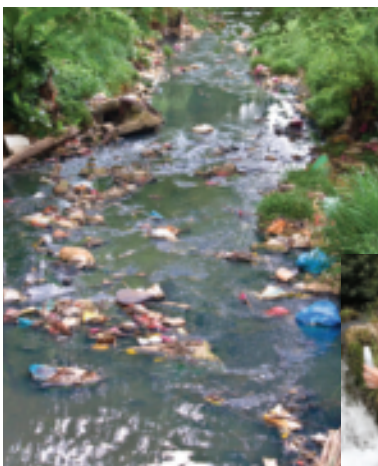
Cocani ngekutsi kungentekani uma sinatsa emanti langcolile. Nyalo-ke buka letitfombe letingentasi. Coca nemngani wakho ngetindlela letehlukene lesingahlobisa ngato emanti.



Faka emaphilisi eklorini emantini.



Bilisa emanti imizuzu lesi-5.



Faka emakhemikhali.



Cenga emanti.





Asikhulume

Nguwaphi emanti wena locabanga kutsi aphephile anganatsfwa?
Faka umbala kulelitfonsi lemanti libe luhlata sasibhakabhaka
nawucabanga kutsi kuphephile kuwanatsa.

Emanti asemfuleni



Emanti laphehlwako



Emanti asempompini



Emanti latsengwe ngelibhodlela



Emanti aselwandle



Emanti labiliswe ngeligidlela



Asente loku

Sebentani ngemacembu nakhe kwekucenga emanti kuwenta ahlobiseke.
Lalelisisani lapho thishela wenu achaza loko lokufanele nikwente.



Utawudzinga loku lokulandzelako:

Libhodlela lepulasitiki lemalitha la-2

Sihlabatsi lesicolisakele

Sihlabatsi lesihhayekile

Ematje lamancane/lukhetse

Sikelo

Kotini



Asibhale

Faka tinombolo kuletinyatselo tekwenta sihengo semanti ngekulandzelana kahle.

	Tsela sihlabatsi lesicolisakele etu kwesigadla sakotini.
	Gucula libhodlela libheke phansi.
	Tsela sihlabatsi semahhedle.
	Ngekucophelela sika kahle lingentasi lelibhodlela lepulasitiki.
	Tsela emanti lamdzaka ebhodleleni.
	Tfululela ematje lamancane nobe lukhetse ebhodleleni.





14

Indlela-mphilo lephilile

Ithemu 1 – Liviki 7 – Lishadi lekusebentela



Asifundze

Fundza ngalowo nalowo mkhuba lomuhle nalomubi. Uma ucabanga kutsi muhle lomkhuba, faka (✓), kantsi nawucabanga kutsi ngumkhuba lomubi, faka siphambano (✗).

Imikhuba Thishela usita bafundzi kufundza.	Muhle ✓	Mubi ✗
Ngidla kudla lokunemphilo.		
Ngilahla tibi letiphuma emotweni nobe etekisini ngelifasitelo.		
Ngigeza tinwele tami njalo nje.		
Ngidla emaswidi lamanyenti.		
Ngigcina tingalo netindlebe tami tihlobile.		
Ngicubha ematinyo ami kanye ngenyanga.		
Ngicobonga tibi ngitilahle emgconyeni wetibi.		
Ngigeza tandla tami emva kwekuya emthoyi.		
Uma ngikhwehlela noma ngitsimula ngibamba ngesandla emlonyeni wami.		
Ngishukumisa umtimba njalo nje.		
Ngigeza tandla embi kwekudla.		
Ngiyatigicikela nje embi kweTV emahora lamadze.		
Ngihlala nalabadzala lababhemako.		





Asente loku

Yakha iphosta ngemkhuba lomuhle nobe lomubi.



Asibhale

Hlola iphosta yakho. Fundza umusho ngamunye, ubese ufaka buso lobumamatsekako uma lomusho uliciniso, ufake lobudzangele uma lomusho ungasilo liciniso.



Yebo 	Cha 
<input type="checkbox"/>	<input type="checkbox"/>
<input type="checkbox"/>	<input type="checkbox"/>
<input type="checkbox"/>	<input type="checkbox"/>

Iphosta yami imbalabala futsi ihlobile.

Ngikujabulele kwakha iphosta yami.

Ngikhandze kumatima kwakha iphosta yami.



Kwente ngaphandle

- Ungazuba kufika kuphi? Sebentisa tintsambo letintsatfu utehlukanise imikhatsi bese uyatizuba. Chubeka utichelanise tehluwane umkhatsi ubone kutsi ungazuba kufinyelela kuphi.
- Nyalo-ke, cela babili bangani bakho bajikitise intsambo iye le nale wena uzube incatfu kuyo .
- Niketanani ematfuba ekuzuba incatfu.



Thishela:
Sayina:
Lusuku:



Kudla lokusheshe konakale nalokuphuta konakala



Asikhulume



Cocani ngekudla lokufanele kugcinwe kubandza kute kungonakali. Ncumani kutsi ngukuphi kudla lokungadzingi kugcinwa kubandza, kodvwa lokungabekwa ekhabetheni. Sika sitfombe ngasinye ekhasini lalokujutjwako usinamatsisele efrijini nobe ekhabetheni.

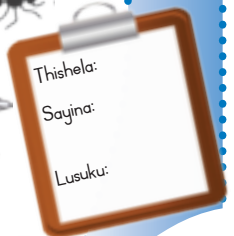




Asikhulume



Cocani ngekutsi ngutiphi tindlela lesingavikela ngato kudla etilokataneni letinjengetimphungane netintfutfwane.



Emalanga eNkholelo nalamanye lakhetsekile



Asifundze

Bantfu mhlaba wonkhe bagubha tinsuku letikhetsikile temaholide.
Nguwaphi emaholide lotawagubha?

NgaKhisimusi sikhatsi lesitfola ngaso
tipho. Sibuye siphe bangani betfu
kanye nebemndeni wetfu tipho.
Sinesihlahla saKhisimusi endlini
yakitsi. Sibeka tipho ngaphansi
kwesihlahla. Sihlobise sihlahla
sabuye sabeka nenkhanyeti etulu.
NgaKhisimusi sidla kudla lokunyenti.



Asisakhoni kumela kufika
kweDiwali. Ngulesikhatsi lapho
sitfola khona emaswidi lamanyenti
kanye netipho letinyenti. Sigocela
emaswidi lamnandzi kanye
nemakhekhe emabhokisini bese
siwapha bantfu labasivakashelako.
Sikhanyisa emalambu lamancane
siwabeke atungelete indlu.



Asisakhoni kumela iHanukkah.
 Sitawuba nekudla lokunyenti
 sishaye sentfwala. Sitsandza kudla
 emapanikhekhe nemadonathi.
 Natsi siyatsandza kutfola tipho.
 Bomzala bayeta batosivakashela.
 Sonkhe siyasita kupheka kudla
 bese sikhanyisa emakhandlela
 endlini yakitsi.



Masinyane nje kutawuba yi-Eid.
 Ngiyetsemba sitawutfola tipho letinhle.
 Sitakupha bangani betfu tipho tabo.
 Sitawudla emakhekhe nemaswidi
 lamanyenti. Siyati kutsi yi-Eid
 ngekususelwa kulokubumbeka kwenyeti.
 Iba ngelusuku lolwehlukile umnyaka
 ngemnyaka.



Asihlabele

Hlabela ingoma loyatiko
 yanobe nguliphi
 kulamalanga lakhetsekile.



Tikhatsi temnyaka



Asikhulume

Buka letitfombe tetikhatsi letine. Cocela umngani wakho ngalokubonako esitfombeni ngasinye. Shano kutsi Tikhatsi letine temnyaka tehlukana njani.



Ngusiphi sikhatsi lositsandza kakhulukati? _____

Kungani utsandza lesikhatsi semnyaka? _____

Lungasiphi sikhatsi semnyaka lusuku lwakho lwekutsalwa? _____



Asihlabele

Kusile, Mnu Langa!
Lusuku lwakho lusandza kucala.
Ngitsandza buso bakho
lobukhatimulako. Kusile, Mnu Langa.



Mvula, mvula suka la!
Botwana bafuna kudlala.
Buya futsi lelinye lilanga.
Ungaveli nje ngisho langa
linye vo.



Thishela:
Sayina:
Lusuku:



18

Tikhatsi temnyaka letine



A sente loku

Sika titfombe tetikhatsi temnyaka ekhasini lelisikwako ngemuva kwalencwadzi. Namatselisa sitfombe ngasinye eceleni kweligama lesikhatsi semnyaka lesifanele.

Ithemu 2 – Liviki 1 – Lishadi lekusebentela



iNhlaba

Kholwane

iNgci

busika

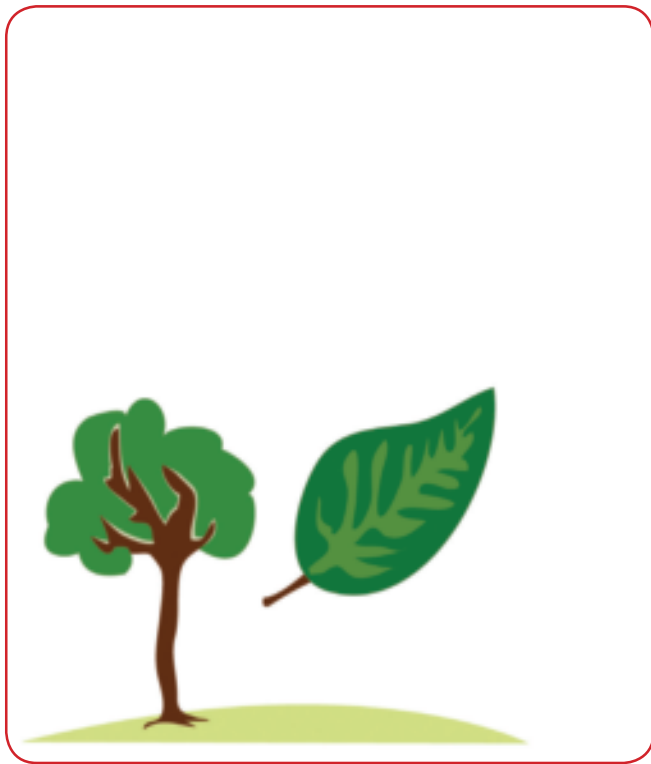
intfwasahlobo

iNyoni

iMphala

Lweti





iNgongoni

Bhimbidwane

iNdlovana

lihlobo

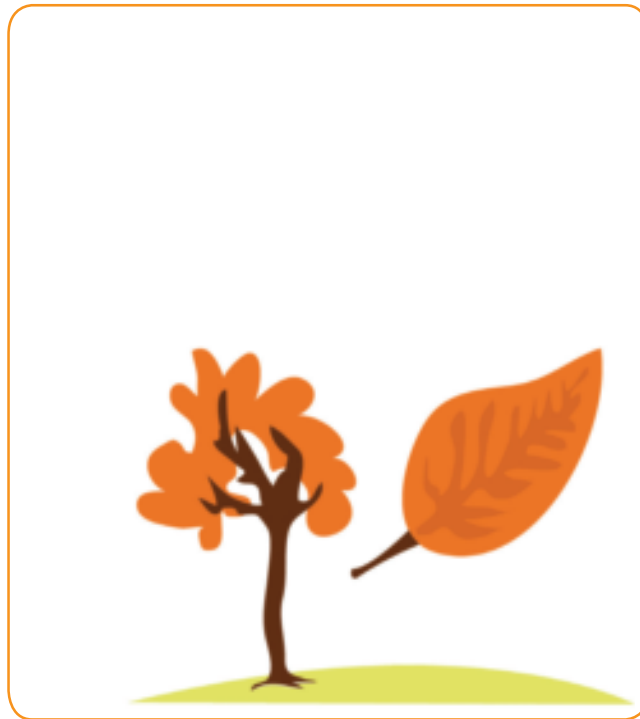


iNdlovulenkhulu

Mabasa

iNkhwekhweti

likwindla



Kwente ngaphandle

Cecsha emakhono akho ebhola.
Shaya ibhola elubondzeni.
Hamba ume ndzawonye usashaya ibhola.
Nyalo-ke, gijima ushaye lebhola utungelete emakhoni.



Thishela:
Sayina:
Lusuku:



Sikhuluma ngetikhatsi temnyaka

Asifundze

Ithemu 2 – Liviki 2 – Lishadi lekusebentela



Lihlobo

Litulu libalele futsi liyashisa.

Imini yindze kantsi busuku bona bufisha.

Singatiphotisa ngekubhukusha nobe sihlale phasi emtfuntini.

Likwindla

Lipholile.

Emacembe acala kugucuka abe sagolide abuye ahhohloke etihlahleni.

Tinyoni tindizela etindzaweni letifutfumele.



Busika

Buyabandza.

Kuletinye tindzawo kukhitsika lichwa nobe sitfwatfwa.

Imini yimfisha kantsi busuku budze.

Letinye tilwane tilala busika bonkhe gonco (tiyahoca).

Intfwasahlobo

Ifutfumele.

Tihlahla ticala kuhluma netimbali tiyabhalasha.

Tinyoni ticala kwakha tidleke titalele emacandza.





Asikhulume

Tilimo tekudla lokwehlukene timila ngetikhatsi letehlukene temnyaka.
Bukisisa letilimo tekudla lokumila ehlobo nasebusika.



Kudla kwesikhatsi semnyaka ngasinye



Thishela:
Sayina:
Lusuku:



20

Ithemu 2 – Liviki 2 – Lishadi lekusebentela

Kwembatsela simo selitulu



Asidvwebe

Dvweba umfana nentfombatana. Umfana kufanele agcoke tembatfo letifutfumele tasebusika kantsi intfombatana kufanele igcoke tembatfo letipholile tasehlobo.



Umfana	Intfombatana



Asinyakate

- Beka emahhlahhubhu phasi nobe udvwebe tindilinga esihlabatsini.
- Uma thishela wakho atsi zuba, zubela endilingeni ngetinyawo totimbili.
- Uma thishela wakho atsi zuba, zubela ngephandle kwendilinga ngelunyawo lunye.
- Dlala mkoko.
- Sebentisa lucetu lweshoki kudvweba letindilinga netikwele phasi.





Asikhulume

Cocela umngani wakho kutsi ngutiphi timphahla lesitigcoka ngaleso naleso sikhatsi semnyaka. Ngutiphi timphahla wena lotsandza kutigcoka?

Dvweba umugca kusuka enchazelweni yekwekwembatsa lesikugcokako kuya eluhlotjeni lwesimo selitulu.

Asibhale



Kwembatsela simo selitulu

Uma libalele kufanele sembatsele kutivikela elangeni.



Uma lifutfumele kumele sembatse kwekwembatsa lokupholile.



Uma kubandza ngaphandle sidzinga kugcoka kwekwembatsa kwensotfo lokufutfumele.



Ngemalanga lanemvula sidzinga lijazi lemvula nesambulelo.



Umtselela wemikhakha yemnyaka



Asifundze



Intfwasahlobo

Entfwasahlobo tihlahla ticala kuhluma.

Sibona tinyoni netinyosi letinyentana kanye netimbali nemacembe lamasha.

Tinyoni takha tidleke titalele nemacandza.

Bafuyi bagunda timvu.

Lihlobo

Ehlobo balimi bakha titselo tabo. Bantfwana betilwane banemlandla kakhulu.

Etindzaweni letinyenti lina kakhulu kube nekudvuma lokubi nemibane.

Tjani, emavungu netimbali kukhula kakhulu, tihlahla nato tikhula tibe tindze.





Likwindla

Letinye tilwane tilondvolota kudla kwato tisalungisela kulala busika bonkhe gonco.

Emacembe etihlahla acala kugucuka abe mtfubi, bubendze, bovu noma abe liphuti.

Tjani bucala kuba bubendze.



Busika

Letinye tilwane tilala busika bonkhe gonco. Sitsi tiyabhaca. Tiyafutfumala ngoba tikhumba tato tiba neboya lobunyenti.



Asibhale

Ngabe tentani letinye tilwane busika bonkhe gonco? _____

Ngabe titivikela kanjani letinye tilwane emakhateni? _____

Tibuya nini tinyoni emaveni lafutfumele kucala titalele? _____



Kuhlanyela sihlahla selibhontjisi



Asente loku

Udzinga

- emabhontjisi la-5
- limfomfo lakotini
- lisoso
- emanti



Lotakwenta

Beka emabhontjisi kulelimfomfo lakotini esosweni.

Kugcine kumanti. Beka lisoso entsendzeni yelifasitelo elangeni.





Gadza libhontjisi kusukela nyalo kuye emavikini lamabili.

Bona kutsi likhula njani.



Buka lesitfombe salesilimo selibhontjisi.

Uma silimo sakho sibukeka njengalesi gcwalisa lusuku.

Lusuku	Lusuku	Lusuku	Lusuku
			



Asente loku

Yentani umdlalo ngesilwane.

Ungabonisa libhele nobe livondvo licokelela kudla kwasebusika.



Kwente ngaphandle

Nyibilika phasi esiyilweni
njengenyoka ifuna indzawo lenhle
yekubhaca kuyo.



Ndiza njengkonjane iya
endzaweni lefutfumele.



Thishela:
Sayina:
Lusuku:





23

Tilwane tasepulazini

Ithemu 2 – Liviki 4 – Lishadi lekusebentela



Asihlabele

Buka lesitfombe ucoce ngetilwane letehlukene tasepulazini lotibonako.
Ngusiphi silwane lesiyintsandvokati kuwe?
Yini lesiyitfola esilwaneni ngasinye kuleti?





Asibhale

Gwalisa timphendvulo letifanele kulelithebula. Kwekucala sesikwentele.

	Lendvuna	Siwewe
	Lensikati	Imbutikati
	Lencane	Lizinyane
	Kukhala	Mm-e-e-
	Indzawo yekuhlala	Sibaya

	Lendvuna	
	Lensikati	
	Lencane	
	Kukhala	
	Indzawo yekuhlala	

	Lendvuna	
	Lensikati	
	Lencane	
	Kukhala	
	Indzawo yekuhlala	

	Lendvuna	
	Lensikati	
	Lencane	
	Kukhala	
	Indzawo yekuhlala	





Asihlabele

Mkhulu Madevu ungumfuyi

Hhiya hhiya hho

Mkhulu Madevu ufuye tinkhomo

Tibhonsa mo-o mo-o la; titsi mo-o mo-o nale

Tibhonsa mo-o, le titsi mo-o, siganga
sonkhe mo-o mo-o

Mkhulu Madevu
ungumfuyi

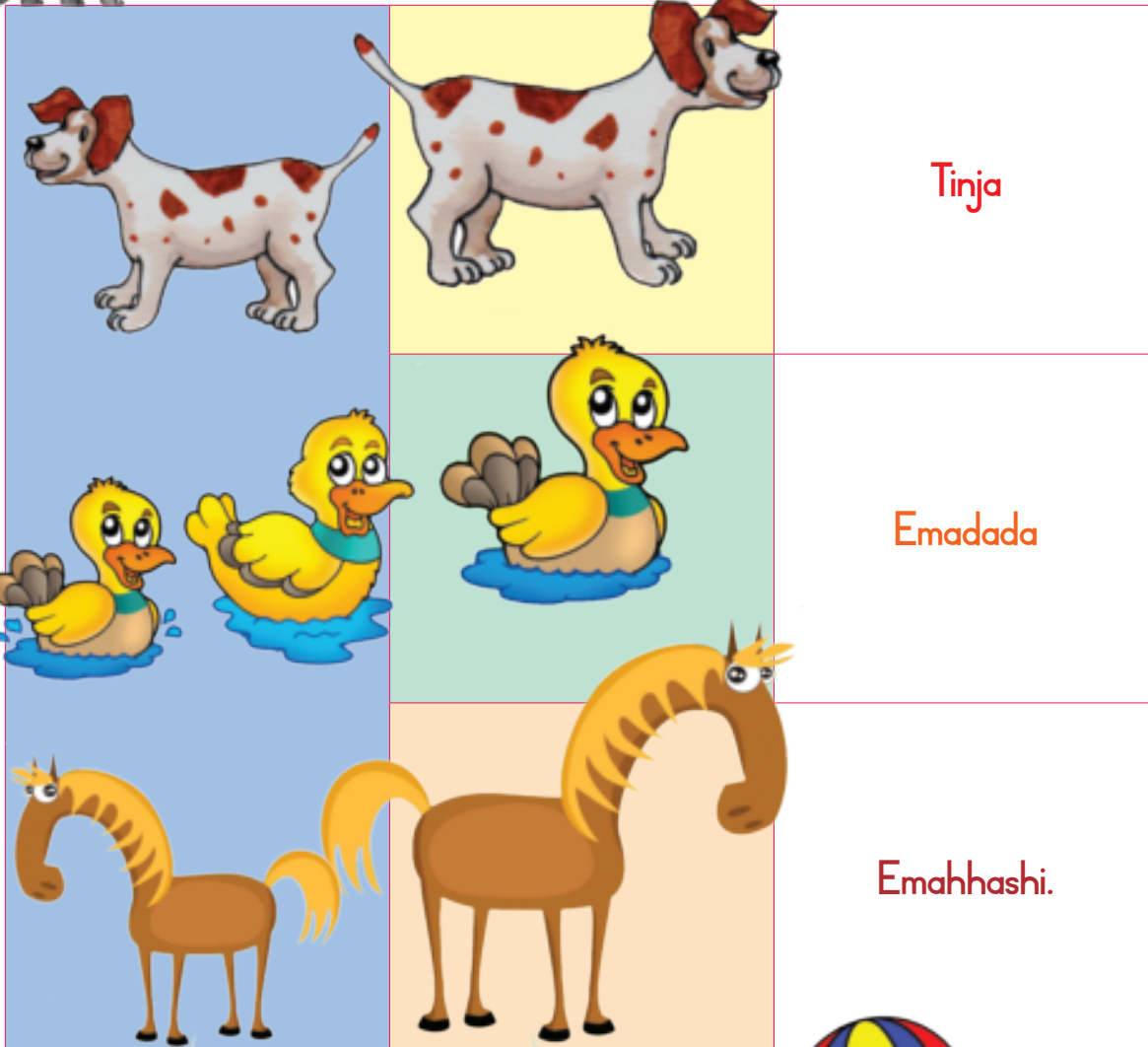
Hhiya hhiya hho





Asihlabele

Chubeka uhlabele lengoma. Esikhundleni semigca lengenkomo sebhentisa letilwane.



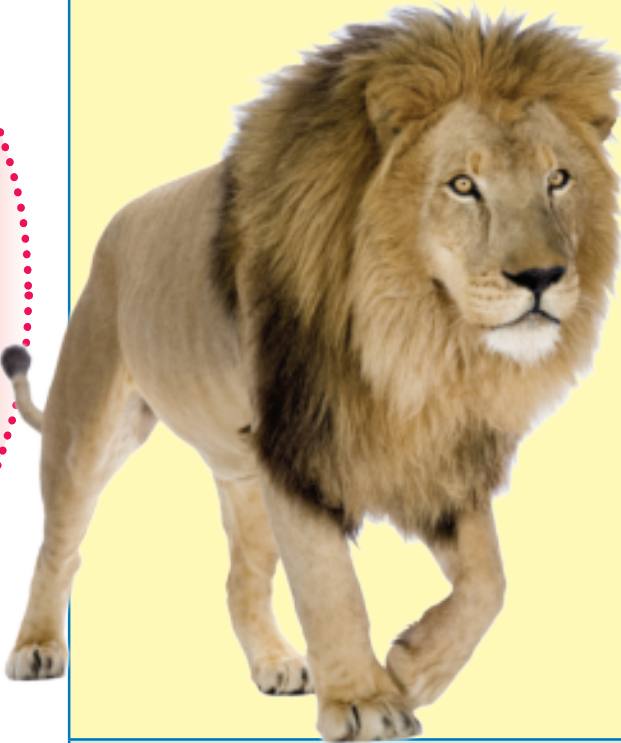
Kwente ngaphandle

- Hamba etulu kweliplanka lekusima ngaphandle kwekuwa.
- Phosa ibhola emoyeni uyibambe ngaphandle kwekuwa.
- Ubese ugadvula njengelihashi.
- Bhadzatela njengelidada.
- Hamba njengeliroboti.

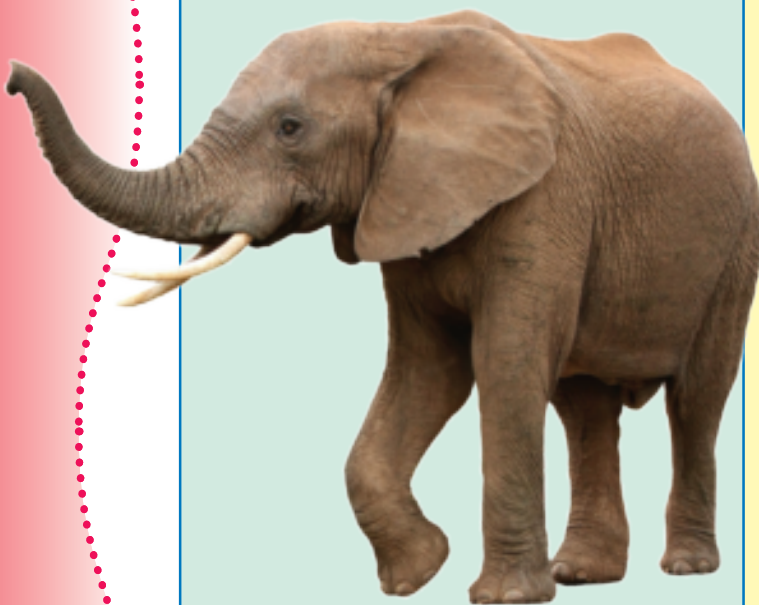




Asifundze



Emabhubezi ayincenye yemndeni wemakati. Libhubezi libonakala njengenkhosi yembuso wetilwane. Ayatingela abulale tilwane letifana netimpunzi nemadvuba. Lawo lamasikati ngiwo latingela kakhulu. Atingela ebusuku nangemabutfo. Emabhubezi anconota kuhlala ematsafeni lavulekile. Emabhubezi angabhodla kuhlokome tiganga.



Tindlovu titilwane letimunyisako letinkhulukati kuletiphila emhlabatsini. Tisengotini malanga onkhe ngoba bacwiyi batitingela njalo ngekufuna tiphondvo-tsambo tato. Tindlovu tikhula imphilo yato yonkhe. Tindlovu tisebentisa imiboko yato kusiphula timphandze, titselo nemanti kungene emlonyeni wato. Tidla kufike ku 200 kg ekudla ngelilanga tibuye tinatse emalitha emanti la-190.



Kunetinhlobo letimbili tabobhejane
 – bhejane lomnyama nabhejane lomhlophe. Bobhejane ababoni kahle, kodvwa banelikhala lelikhona kuhosha nalokukhashane kabi. Bobhejane bakhulu kakhulu bangaba nesisindvo lesingema 2 500 kg. Bobhejane bavamise kutingelwa bacwiyi nebatingeli labafuna timphondvo tabo. Sidzinga kuvikela bobhejane kubatingeli labababulalako kutfola timphondvo tabo.



Ingwe lese icocodzele ingakhula ifike ku 2 m budze. Sikhumbaboya sayo sibubendze kancane nje nemabala lamnyama latindilinga. Ingwe iyakhona kucanca kahle nje futsi kayinankinga kutingela etihlahleni.



Inyatsi iphila emhlanjini. Uma kunengoti, tinkhomati takhona nematfole kuyabutsana kume emkhatsini kutungeletwe tinkunzi kute tivikeleke. Letinye tinyatsi tingakhula tite tifike ku 1,7 m budze.





Asifundze



Letinye tilwane titivikela ngekugucula
indlela letibukeka ngayo kute tifanane
nendzawo letikuyo. Lunwabu lungatigucula
umbala kute lufane netihlahla loluticancako.



Imidvwa yelidvube yenta kube lukhuni
kutsi libonakale lidvuba evungwini. Loku sitsi
siphambamehlo. Ase ucabange ngaletinye
nje tilwane letisebentisa siphambamehlo.



Asitjabulise



Thishela wakho
utakukhombisa kutsi niyidlala
njani ingoma situlo.





Asente loku

Dweba silwane sasendle.

Chubeka ucocele umngani wakho kutsi lesilwane sitifihla njani kuphamba emehl.



Thishela:
Sayina:
Lusuku:





27

Tilwane tasemantini



Asente loku

Cedzela letitfombe ngekwengeta imidwebo nobe titfombe tetilwane letihlala emfuleni.

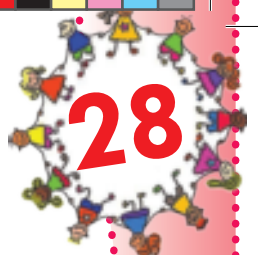
Ithemu 2 – Liviki 6 – Lishadi lekusebentela





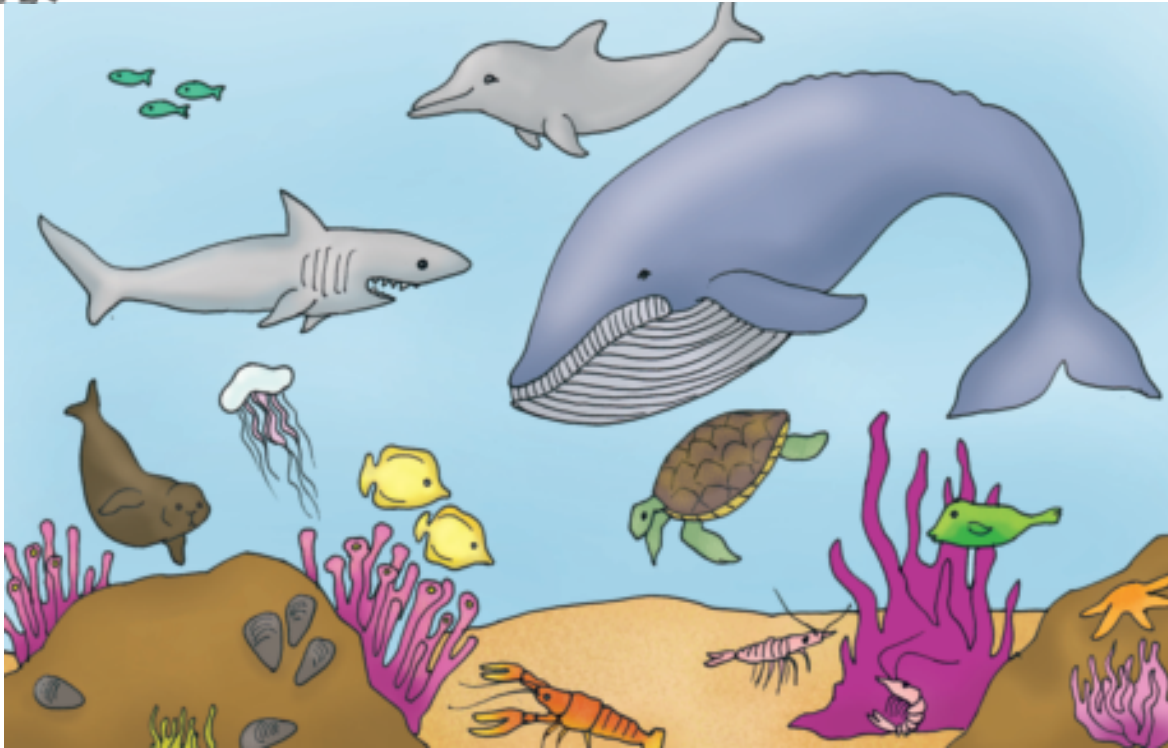
Tidalwa tasemajujukwini elwandle

28

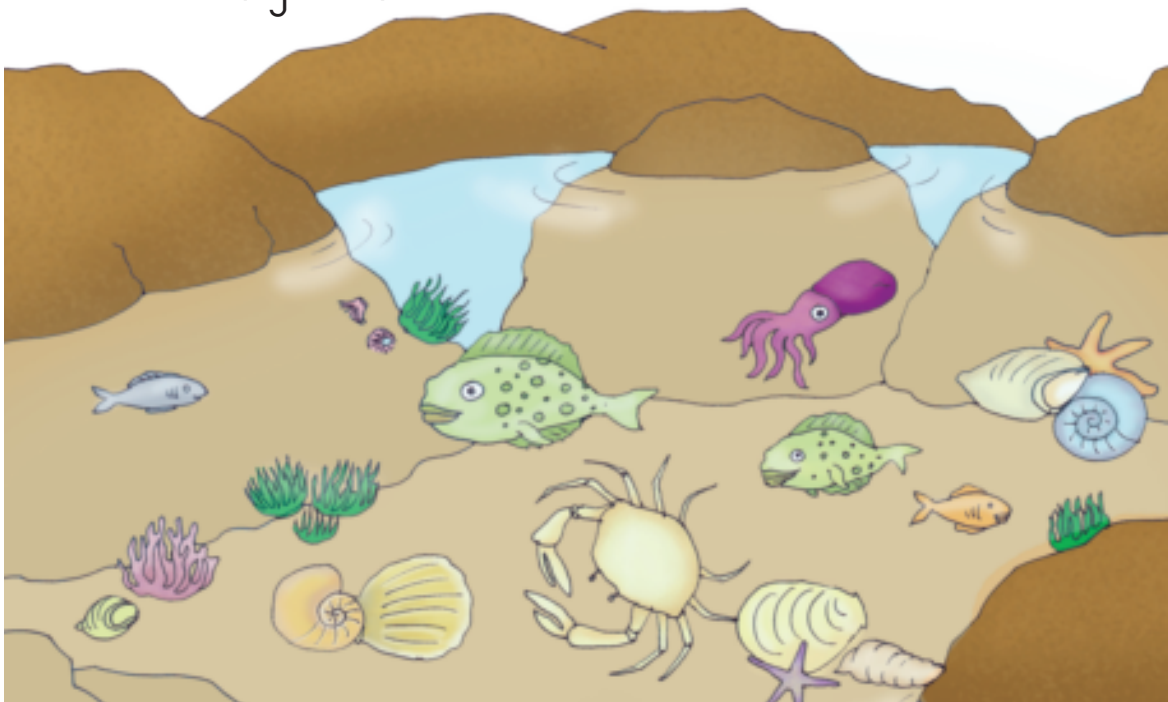


Asikhulume

Ase sibuke tonkhe tinhlobo letehlukene tetilwane letihlala emantini laneluswayi.



Kubuye kube khona tilwanyana letincane, letihlala eticojeni temadvwala letingashoni.



Ithemu 2 – Liviki b – Lishadi lekusebentela

Thishela:
Sayina:
Lusuku:





29

Buciko betilwane

Ithemu 2 – Liviki 7 – Lishadi lekusebentela



Asikhulume

Cocani ngato tonkhe tilwane taselwandle letikuletitfombe.

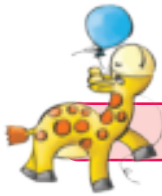
- Ngutiphi kuletilwane taselwandle letingadliwa bantfu?
- Ngutiphi tilwane taselwandle letiyingoti?
- Ngabe umtimba wenhlanti umbonywe wabuye wavikelwa yini?
- Ngutiphi tindlela letehlukene letingangcolisa lwandle.
- Wena ucabanga kutsi kungentekani uma lwandle lungangcoliseka lube nemfucuta kumbe tibi letinashevu?



Asibhale

Bhala emagama etilwane longaticabanga letihlala emfuleni, emadamini kumbe elwandle kuletibaya letintsatfu telithebula.

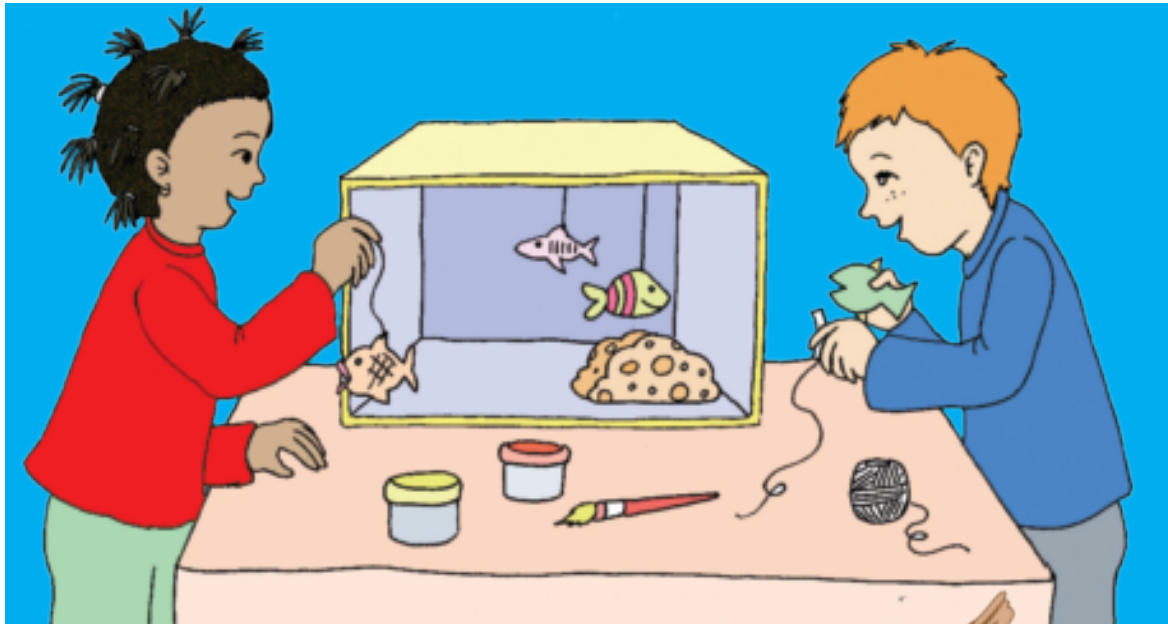
Umfula	Lwandle	Lidamu



Asente loku

Yenta lakakho lithange letinhlanti.

- Penda lingekhatsi lelibhokisi lesicatfulo libe luhlata sasibhakabhaka bese ulilalisa ngemhlubulo.
- Chubeka usike inhlanti ngemuva encwadzini.
- Namatselisa inhlanti etulu nelibhokisi usebentisa ithephu lenamatselako nentsambo.



Kwente ngaphandle

- Ndiza njengenyoni ngesivinini lesisetulu nalesiphasi.
- Bhadzatela njengephengwini.
- Ndiza njengenyosi.
- Hamba njengenkhalala.
- Ntjwiza njengenhlangeni.
- Zuba njengesicoco.
- Dlalani umdlalo lotsi Landzela umholi.
- Dlalani umdlalo welikati neligundvwane.



Tilwane letetfwala emakhaya ato



Asifundze



Bewati nje? Ngingena ngenele kahle egobongweni lami, alukaze lube luncane kimi.

Lufudvu

Lufudvu silwane sakabonyoka lesinemilente lemine lemahhedlehedle nentsamo nenhloko leshwaphene. Luhamba kancane neligobongo lalo lendlu emhlane.

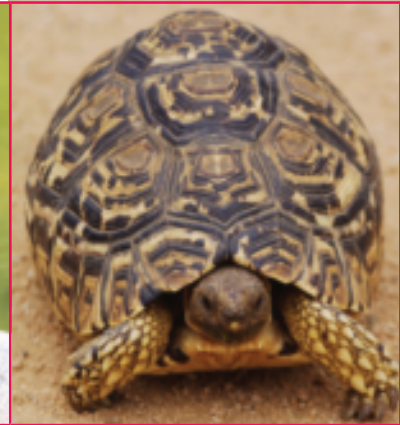
Tihlalaphi letilwane?



Ngihlala elwandle.



Ngihlala emantini lacwengekile etiteteni.



Lufudvu: Ngihlala emhlabeni.



Asibhale

Phendvula lemibuto ngelufudvu loluphila emhlabeni.

Ngabe ligobongo lelufudvu lilukhuni nobe litsambile? _____

Ngabe ligobongo lelufudvu liluvikela kuphi? _____

Lwentani lufudvu nalwetfukile? _____

Lufudvu kodwa ludla kudla kuni? _____



Umnenkhe

Buka ligobongo lemnenkhe.

Liso

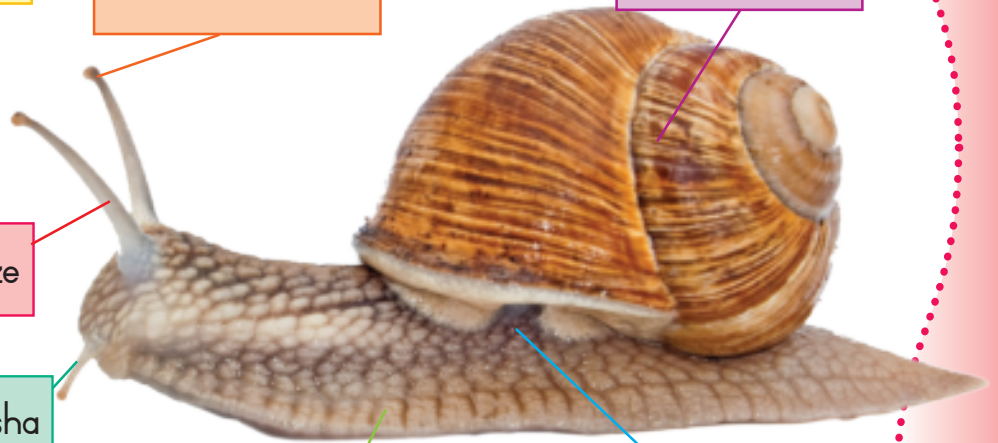
Ligobongo

Luphondvo-miva loludze

Luphondvo-miva lolufisha

Lunyawo

Sikhala sekuphefumula



Uhamba njani umnenkhe? _____

Sewake walitfolo ligobongo lemnenkhe lelite lutfo?

Ucabanga kutsi washonaphi lomnenkhe? _____

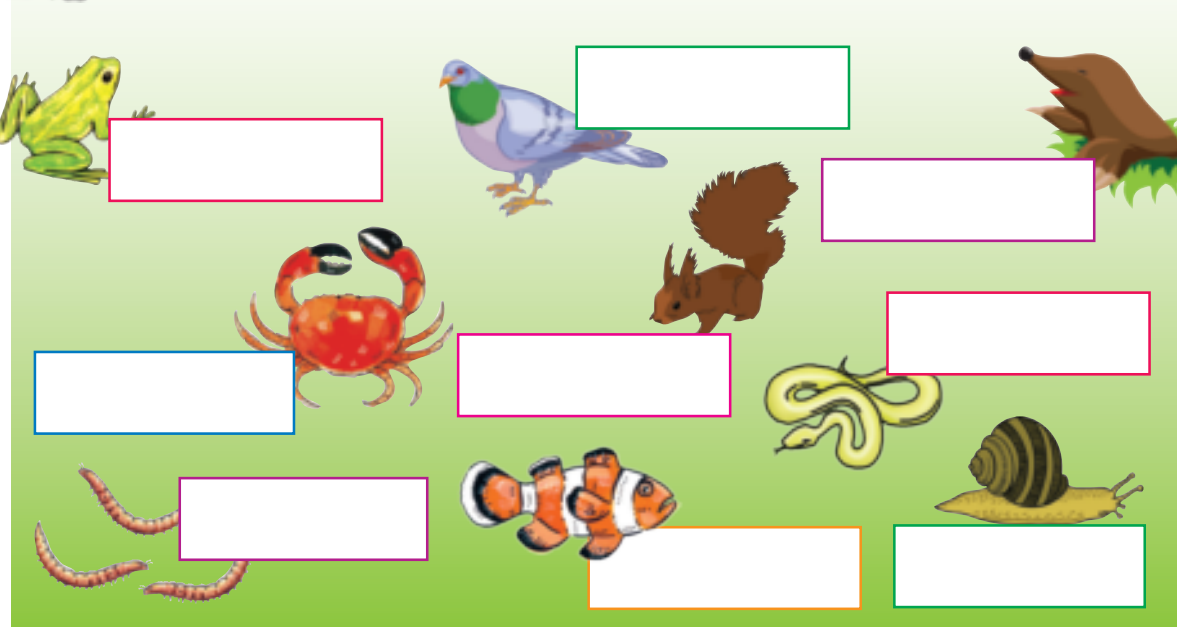
Unjani umbala wemagobongo emnenkhe? _____

Ucabanga kutsi kungani iminenkhe inemagobongo? _____



Asibhale

Ucabanga kutsi ngihlalaphi? Edvute nesitfombe sami, bhala kutsi likhaya lami ngingalakha **esihlahleni**, yini nobe **emhlabatsini** kumbe **emantini**.



Tilwane letitakhela tindlu tato



Asente loku

Condzanisa letitfombe taletilwane kanye nemakhaya ato.



Asifundze

Tinyosi



Tinyosi tihlala emhomeni wetinyosi.
Takha imihhome yato ngemtfwebeba.
Tigcina kudla kwato emihomeni yato.



Tintfutwane

Tintfutwane takha emakhaya lahlukene endzaweni yato. Intfutwane lencane ingetfwala umfwalo lomkhulu losindza ngalokuphindvwe kane kunayo. Tintfutwane tiyakhona kuchumana ngenkhulumo. Tiyecwayisana nakunengoti, futsi titjelane kutsi kudla kungakuphi.



Asibhale

Ucabanga kutsi kungani tintfutwane titakhela emakhaya? _____

Ngubani sitsa lesikhulu sentfutwane? _____

Tiwakha ngani emakhaya ato? _____



Asifundze

Tinyoni

Tinyoni takha tidleke tibe emakhaya ato kute tibe nendzawo lephephile yekubeka emacandza ato. Bukhulu besidleke buya ngebukhulu benyoni. Tisebentisani tinyoni kwakha tidleke tato?



Ngusiphi silwane lesisitsa senyoni? _____





Sichazamagama sami

A
a

M
m

B
b

N
n

C
c

O
o

D
d

P
p

E
e

Q
q

F
f

R
r

G
g

S
s

H
h

T
t

I
i

U
u

J
j

V
v

K
k

W
w

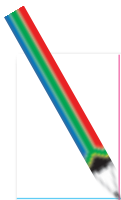
L
l

X-Z
x-z



Handwriting practice sheet with a vertical red margin line on the left and horizontal blue lines for writing.

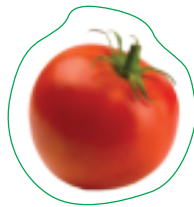
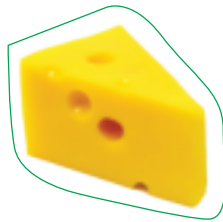
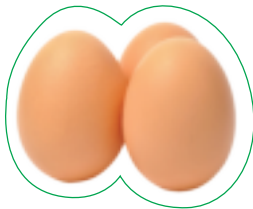
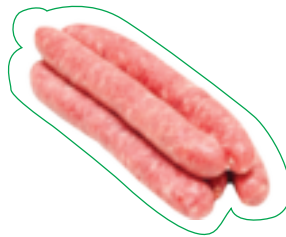
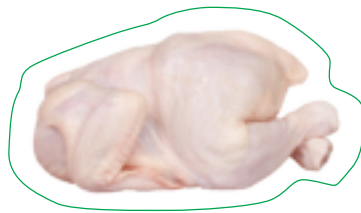




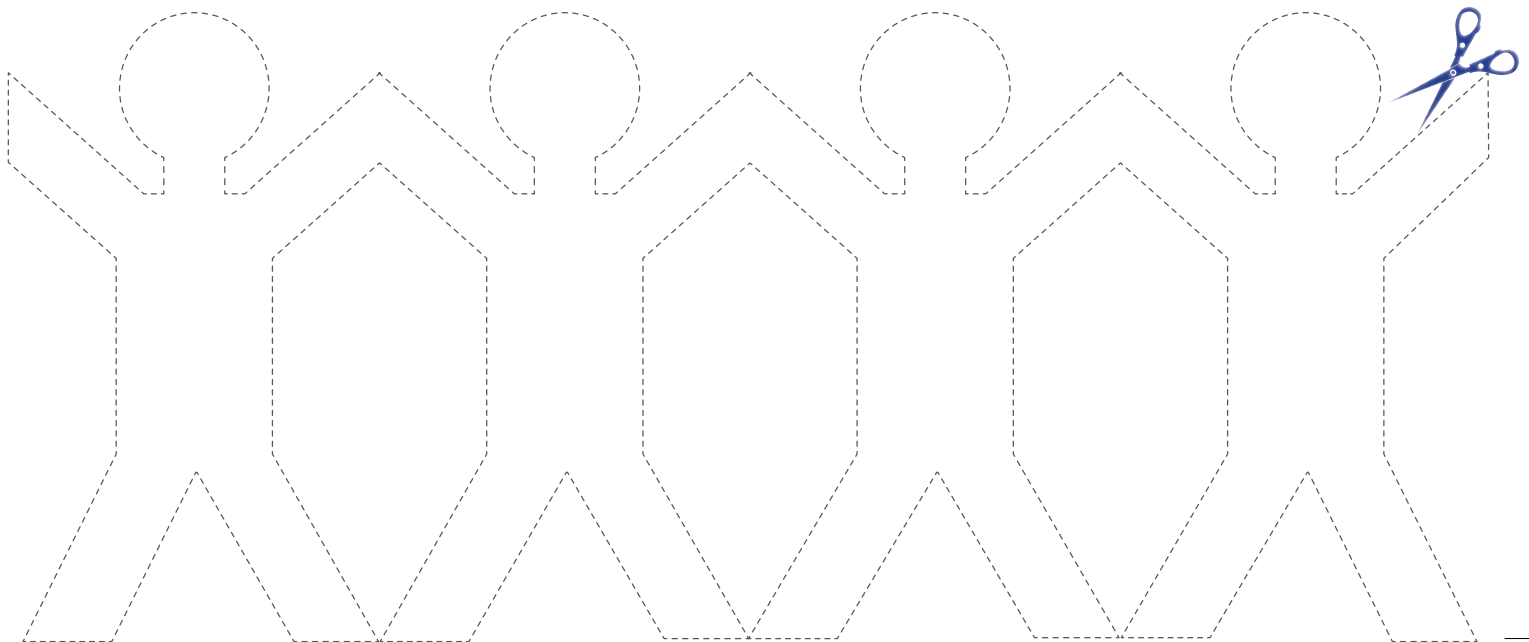
A large rectangular area containing a vertical red margin line on the left and 20 horizontal blue lines for writing.



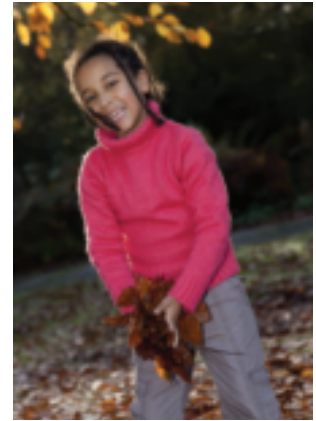
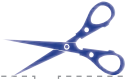
P.29



P.19



P.36-37



P.57

