

Leyi  
pfuxetiweke hi  
xiCAPS

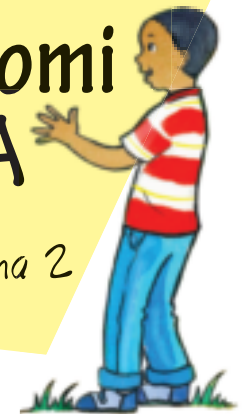
Giredi ya

2



Swikili swa vutomi  
hi XITSONGA

Buku ya 1 – Tikotara ta 1 na 2



ISBN 978-1-4315-0262-2



9 781431 502622



LIFESKILLS IN XITSONGA  
GRADE 2 – BOOK 1

TERMS 1&2

ISBN 978-1-4315-0262-2

14th Edition

THIS BOOK MAY NOT BE SOLD.

Workbooks available in this series:

- Grade R  
(in all official Languages);
- Literacy/Home Language Grades 1 to 6  
(in all 11 official Languages);
- Mathematics Grades 1 to 3  
(in all 11 official Languages);
- Mathematics Grades 4 to 9  
(in Afrikaans and English);
- Life Skills Grades 1 to 3  
(in all 11 official Languages); and
- Grades 1 to 6 English First Additional  
Language.

Vito:

Tlilasi:



basic education  
Department:  
Basic Education  
REPUBLIC OF SOUTH AFRICA

## Leswi nga endzeni

### Kotara ya 1

### Pheji

- 1 Hi fanele ku dya swakudya leswinene leswaku hi kota ku hanya ..... 2
- 2 Mati ya hi nyika vutomi ..... 4
- 3 Hi hlayisa mati ..... 6
- 4 Moya wo tenga wu hi nyika matimba ..... 8
- 5 Mina na vanghana va mina ..... 10
- 6 Vanhu lava hi hanyaka na vona ..... 12
- 7 A ka ha ri na ku karhata van'wana 14
- 8 Hinkwerhu hi hlawulekile ..... 16
- 9 Leswi hi titwisaka xiswona ..... 18
- 10 Vatsoniwa ..... 20
- 11 Vana hinkwavo va hlawulekile ... 22
- 12 Nghwazi ya mina ..... 24
- 13 Ku tengisa mati ..... 26
- 14 Mahanyele lamanene ..... 28
- 15 Swilo leswi onhekaka na leswi nga onhekiki ..... 30
- 16 Masiku ya swa vukhongereri na man'wana yo hlawuleka ..... 32

### Kotara ya 2

### Pheji

- 17 Tinguva ..... 34
- 18 Tinguva ta mune ..... 36
- 19 Mayelana na tinguva ..... 38
- 20 Ku ambala ku ya hi maxelo ..... 40
- 21 Mbuyelo bya tinguva ..... 42
- 22 Ku byala ximilana xa nyawa ..... 44
- 23 Swiharhi swa le purasini ..... 46
- 24 Epurasini ..... 48
- 25 Swiharhi swa nhova ..... 50
- 26 Leswi swiharhi swi tumberisaka xiswona ..... 52
- 27 Swiharhi swa le matini ..... 54
- 28 Swivumbiwa swa le hansi ka lwandle ..... 55
- 29 Vutshila bya swiharhi ..... 56
- 30 Swiharhi leswi fambafambaka na makaya ya swona ..... 58
- 31 Swiharhi leswi tiakelaka vutshamo ..... 60
- 32 Dikixinari ya mina ..... 62



Manana Angie Motshekga, Holobye wa Dyondzo ya Masungulo



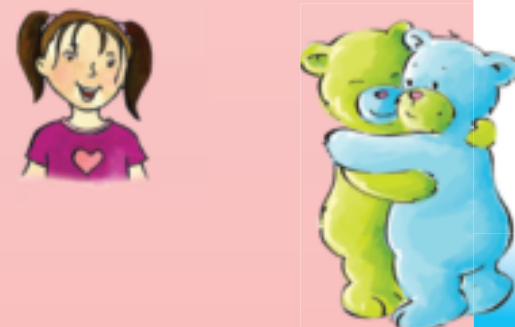
Dkd. Reginah Mhaule, Xandla xa Holobye wa Dyondzo ya Masungulo

Tibuku leti to tirhela ti endleriwe vana va Afrika-Dzonga ehansi ka vurhangeri bya Holobye wa Dyondzo ya Masungulo, Manana Angie Motshekga na Xandla xa Holobye wa Dyondzo ya Masungulo, Dkd. Reginah Mhaule.

Tibuku to tirhela ta Rainbow ti vumba xiyenge xin'wana xa ntlawa wa migingiriko ya Ndzawulo ya Dyondzo ya Masungulo leyi kongomisiweke eka ku antswisa matirhelo ya vadyondzi va Vaafrika-Dzonga eka tigiredi ta ntsevu to sungula. Tanihi xin'wana xa swilo leswi nga swirhangana eka nkunguhato wa matirhelo ya mfumo, phurojeke leyi yi humelerile hi ku seketeriwa hi timali hi Nkwama wa Timali ta Tiko. Leswi swi endlile leswaku Ndzawulo yi swi kota ku endla leswaku tibuku leti to tirhela, ti kumeka hi tindzimi hinkwato ta ximfumo handle ko hakeleriwa.

Hi tshemba leswaku tibuku leti ti ta pfuna vadyondzisi eka migingiriko ya vona yo dyondzisa ya masiku hinkwawo no tiyisisa leswaku vadyondzi va vona va kota ku heta kharikhulamu. Hi tiyisisa leswaku hi letela mudyondzisi eka nghingiriko wun'wana na wun'wana hi ku katsa mifungo leyi kombisaka leswi mudyondzi a faneleke ku endla swona.

Hi ni ntshembo wa leswaku vana va ta tiphina no tsakela ku tirha migingiriko leyi nga ebukwini loko va ri karhi va ya emahlweni no dyondza, na leswaku wena, mudyondzisi, u ta tsaka swin'we na vona. Hi mi navelela ku humelela, wena na vadyondzi va wena eku tirhiseni tibuku leti to tirhela.





# Giredi ya

# 2

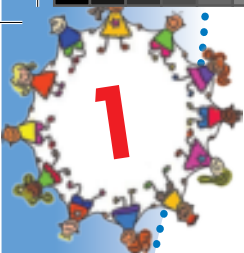


Swikili swa vutomi  
hi **XITSONGA**  
Buku ya I



Buku leyi i ya:





# Hi fanele ku dya swakudya leswinene leswaku hi kota ku hanya kahle



A hi hlayeni

Miri wa hina wu lava swakudya leswi wu lulameleke leswaku hi ta kota ku kula. Hi fanele ku dya swakudya swo huma eka ntlawa wun'wana na wun'wana masiku hinkwawo. Hi fanele ku dya swakudya leswinene leswaku hi ta va na matimba yo endla swilo hinkwaswo leswi hi faneleke ku endla swona. Loko hi nga dyi swakudya leswi faneleke, hi ta ngheniwa hi mavabyi.

## Mintlawa ya ntlhanu ya swakudya

Tindzoho na swiendliwa swa tindzoho

Matsavu na mihandzu

Vanhu van'wana va dya matsavu ntsena. Leswi swi vula leswaku a va dyi nyama yihi kumbe yihi. Va dya ntsena swakudya swo huma eka 4 wa mintlawa ya swakudya.

Nyama, nhlampfi, huku, timanga na tinyawa

Mafurha na tioyili

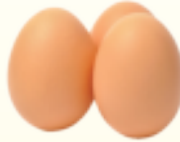
Swiendliwa swa masi





### A hi endleni

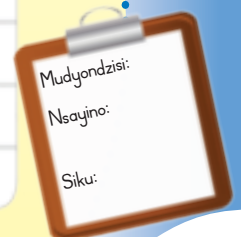
Bula na munghana wa wena hi swakudya leswi faneleke eka leswi landzelaka. Bana xirhendzevutana eka swona.



### A hi tsaleni

Titeke wonge u ya esupamakete na mana wa wena ku ya xava swakudya swo lalela. Endla nxaxameto wa swakudya leswi faneleke leswi nga ta fanela ku djiwa hi vandyangu.

## NXAXAMETO WO XAVA





2

# Mati ya hi nyika vutomi

Kotara ya I – Vhiki ra I – Phepha ro tirhela ra



A hi vulavuleni

Hikwalaho ka yini hi lava mati?

Vanhu, swimilana na swiharhi swi lava mati leswaku swi ta kota ku hanya.

Mati ya fambisa swakudya leswi hi swi dyaka ku ya eka swirho swo hambana swa miri wa hina. Ya tlhela ya pfuna miri wa hina ku susa leswi nga ha lavekiki.



A hi endleni

Siku rin'wana na rin'wana hi tirhisa mati emakaya ya hina. Hlamusela munghana wa wena hi swilo hinkwaswo leswi u tirhisaka mati eka swona. Kutani dirowa swifaniso swa mune ku kombisa matirhisele ya hina ya mati. Tsala nhlokomhaka ehenhla ka xifaniso xin'wana na xin'wana ku hlamusela leswi xi vulavulaka hi swona.

Blank writing area with a pink border and a horizontal line.

Blank writing area with a green border and a horizontal line.

Blank writing area with a purple border and a horizontal line.

Blank writing area with a red border and a horizontal line.

4

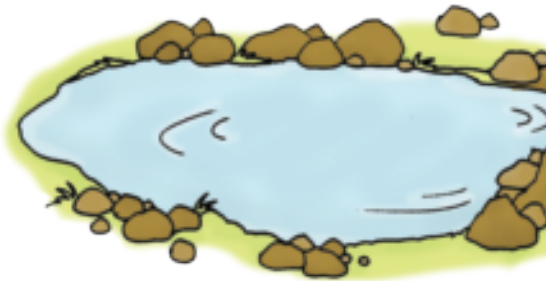
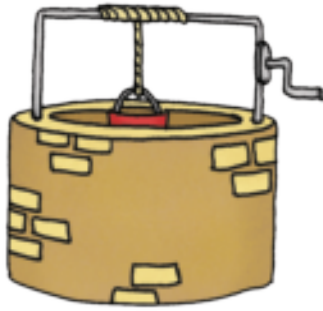
Siku: .....



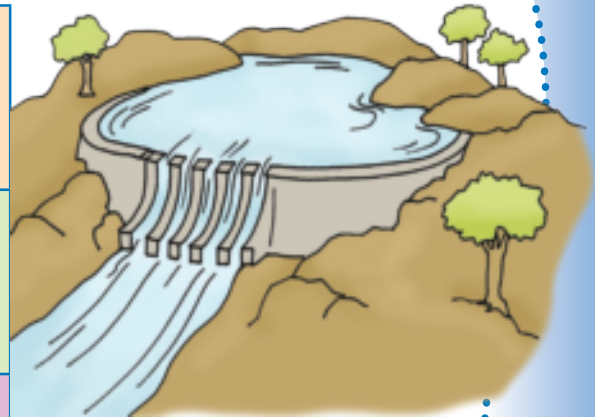


### A hi tsaleni

Xana mati ya kumeka kwihi? Dirowa ntila ku hlanganisa rito rin'wana na rin'wana na xifaniso lexi faneleke.



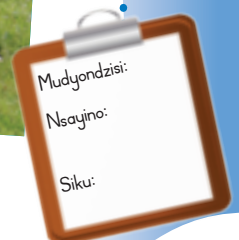
|            |
|------------|
| xiseluselu |
| xipelupelu |
| nambu      |
| damu       |
| xihlovo    |



### Humelani ehandle

Mi nga si endla ngingiriko ehandle, olooxani swirho tanihi ximanga. Leswi swi ta olovisela miri wa n'wina ku kota ku fambafamba. Tlhela u olooxa swirho endzhaku ka ngingiriko leswaku u kota ku wisa. Leswi swi ta pfuna leswaku u nga twi ku vava emisiheni ya wena.

- Tlula tanihi hi chela. Endla mipfumawulo ya machela.
- Hoxelanani bolo kumbe nkwama wa tinyawa. N'wana un'wana na un'wana u fanele ku yi khoma.
- Kutani hoxela bolo kumbe xinkwamana xa tinyawa ehenhla u tlhela u xi qhavulela.
- Ringanisa nkwama wa tinyawa enhlokweni ya wena kutani wena na munghana wa wena mi va na mphikizano wa ku kahlula. Xiya ku leha ka nkarhi wo ndzenengela nkwama.





# 3

# Hi hlayisa mati

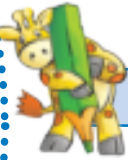
Kotara ya 1 – Vhiki ra 2 – Phepha ro tirhela ra



A hi vulavuleni

Mati ya na nkoka swinene kutani a hi fanelangi ku tlanga hi wona.

Bula na munghana wa wena hi tindlela to hambana to hlayisa mati.



A hi tsaleni

Tsala mavonele mambirhi yo hlayisa mati eswivandleni leswi nga laha hansi.

1.

Two horizontal blue lines for writing.

2.

Two horizontal red lines for writing.



A hi endleni

Tirhisa tikhirayoni ku endla phositara ya mihlovohlovo hi mahlayisele ya mati. Phositara ya wena yi fanele ku kucetela van'wana leswaku va hlayisa mati. Loko u endlile phositara ya wena, yi kombise vanghana va wena.

A large empty rectangular box for drawing, with a stack of colored pencils on the right side.





### Humelani ehandle

A hi tlangeni ntlangu wa  
"I nkarhi muni, N'wamhisi?"

Un'wana wa n'wina u fanele ku va mhisi.  
Nyiketani ku vutisa xivutiso xa "I nkarhi muni  
N'wamhisi?"

Nkarhi wun'wana na wun'wana loko u vutisa, mhisi  
yi fanele ku hlamula yi hlamusela leswi nkarhi wu  
vulaka swona.

Kambe loko mhisi yi hlamula leswaku "I nkarhi  
wa swakudya swa nihlekani", yi ta sungula ku  
tsutsumisa. U fanele u tsutsuma yi nga si ku  
khoma.



Sweswi kuma hupu leyi u nga ta tlanga  
hi yona. Nyiketani na munghana wa  
wena ku tsemakanya hupu, ro sungula  
hi milenge ya n'wina kutani endzhaku hi  
mavoko ya n'wina.

Kutani khoma hupu yi ku thwi, loko  
munghana wa wena a kasa a hundza eka  
yona. Nyiketani ku endla leswi.



Xo hetelela,  
hi mintlawa ya 4,  
endlani switoveto mi  
cina ncino wa  
xiAfrika-Dzonga.

Mudyondzisi:  
Nsajino:  
Siku:





# Moya wo tenga wu hi nyika matimba

Kotara ya 1 – Vhiki ra 2 – Phepha ro tirhela ra



A hi hlayeni

Moya lowu hi wu hefemulaka wu na okisijeni. Leswi swi pfuna miri wa hina leswaku yi kota ku tirhisa swakudya leswi hi swi dyaka, kutani hi kuma matimba leswaku hi kota ku hanya. Loko hi hefemula moya wo thyaka, miri wa hina a yi nga swi koti ku tirha kahle.



A hi tsaleni

Tshama na munghana wa wena. Tatisani swivandla leswi nga laha hansi kun'we na munghana wa wena. Tatisani swivandla leswi nga laha hansi

Ndzi fanele ku kuma moya wo tenga hikuva

---

Loko moya wu thyakile

---

Moya wu thyaka loko

---

Leswi hi nga endlaka swona leswaku moya wu tshama wu ri wo tenga:

1. 

---

2. 

---





### A hi hlayeni

Vanhu va fanele ku kuma masana leswaku va ta kota ku tsaka no hanya kahle. Masana ya pfuna miri wa hina ku endla vhitamini ya D. Hi fanele ku kuma vhitamini leyi hikuva yi tiyisa marhambu. Masana yo tala ngopfu na wona ya onha. Hi nga twa ku vava hikwalaho ko hisiwa hi dyambu. Loko se hi kurile hi nga va na mavabyi ya mfukuzana.



### A hi tsaleni

Tatisa swivandla leswi nga laha hansi:

Ndzi nga kumeka ndzi sirhelelekile eka masana yo tala loko ndzi:

1. \_\_\_\_\_
2. \_\_\_\_\_
3. \_\_\_\_\_



### A hi yimbeeleni

Yimbelelani risimu leri mi tlhela mi phokotelela biti.



**Masana ya mina**  
**Rivoningo ra mina.**  
**Wa ndzi tsakisa**  
**Loko ndzi weriwa hi papa**  
**ra ntima,**  
**Ndzi tshembile wena.**  
**Ndzi ku rhandza ngopfu**  
**U nga ndzi fularheli.**



U fanele ku tirhisa mafurha yo sivela ku hisiwa hi dyambu kumbe xigqhoko xa mumu ku sirhelela nhlonge ya wena eka ku hisiwa hi dyambu.





# Mina na vanghana va mina

Kotara ya 1 – Vhiki ra 3 – Phepha ro tirhela ra



A hi vulavuleni

Hinkwerhu hi tsakela ku va na vanghana lavanene. Xana u swi tivisa ku yini leswaku munhu i munghana lonene?



A hi tsaleni

Exivandleni lexi nyikiweke laha hansi, endla nxaxameto wa swilo leswi endlaka munhu a va munghana lonene.

1. \_\_\_\_\_
2. \_\_\_\_\_
3. \_\_\_\_\_
4. \_\_\_\_\_



A hi tsaleni

Anakanya hi swivutiso leswi kutani u tsala tinhlamulo ta wena.

|   |
|---|
| Xana u na vanghana vangani?                     |
|   |
| Vito ra munghana wa wena wa xiviri i mani?      |
|   |
| Xana mi vile vanghana nkarhi wo tanihi kwihhi?  |
|   |
| Hi xihhi xo hlawuleka hi munghana loyi wa wena? |
|   |



A hi vulavuleni

Tshama na munghana wa wena kutani mi bula hi tinhlamuselo leti. Engetela mfungho wo gwajula (✓) ebokisini loko swi ri swona, mfungho wa xihambano loko swi nga ri swona (✗).

### Nongonoko wo kambisisa vunghana

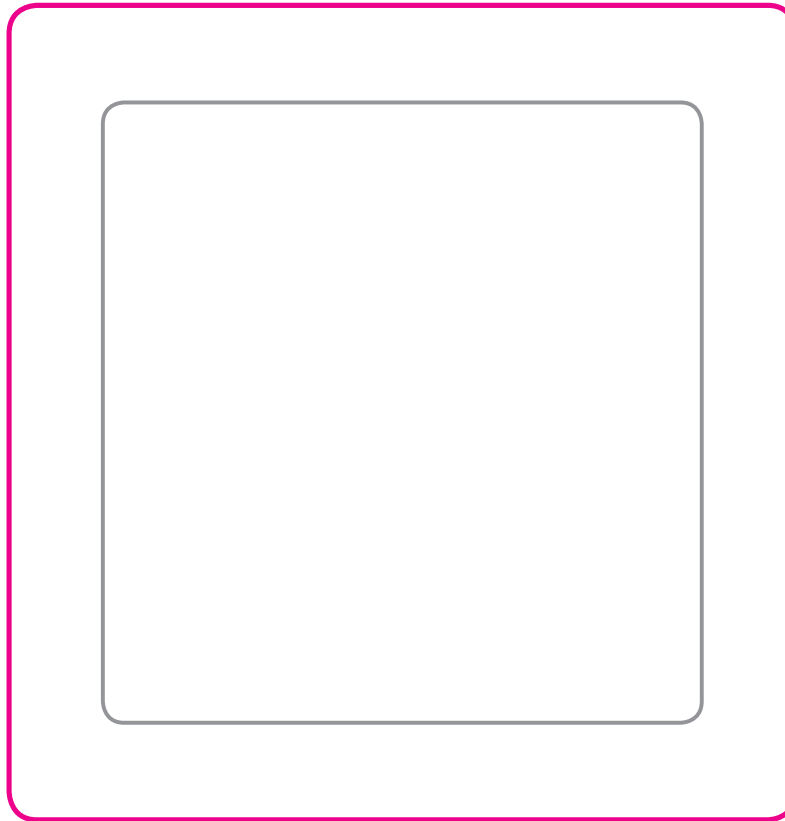
Engetela ✓ kumbe ✗

|  |  |
|--|--|
| Munghana wa mina wa ndzi hlayisa.                  |  |
| Munghana wa mina wa ndzi pfuna.                    |  |
| Munghana wa mina u ndzi hlamusela mahungu ya yena. |  |
| Munghana wa mina a nga lwi na mina.                |  |



A hi endleni

Anakanya hi nchumu lowu u nga wu endlaka ku endla leswaku munghana wa wena a titwa a hlawulekile. Kutani dirowa xifaniso hi wona endzeni ka fureme. Tsundzuka ku khavisa fureme ya xifaniso. Loko u hetile ku endla leswi, vulavula hi mihlovo leyi u yi tirhiseke eka xifaniso xa wena.

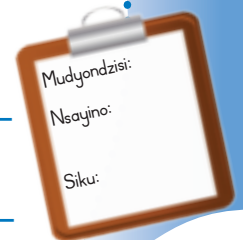


A hi tsaleni

Tsala 2 wa swivulwa hi xifaniso xa wena.

---

---





# 6

# Vanhu lava hi hanyaka na vona

Kotara ya 1 – Vhiki ra 3 – Phepha ro tirhela ra



A hi vulavuleni

Xiya swifaniso. Anakanya hi leswi vanghana lavanene va swi endlaka kutani mi bula hi swona emintlaweni ya n'wina. Sweswi anakanyani hi leswi vanghana vo homboloka va endlaka swona. Engetela mfungho wo gwajula (✓) eka xifaniso xin'wana na xin'wana lexi kombisaka vunghana lebyinene, xihambano (✗) eka leswi kombisaka vunghana byo homboloka.

|  |  |  |  |
|--|--|--|--|
|  |  |  |  |
|  |  |  |  |
|  |  |  |  |
|  |  |  |  |
|  |  |  |  |
|  |  |  |  |



**A hi hlaleni**

Hlaya xivulwa xin'wana na xin'wana kutani u khalara xikandza xa ku pfumela xa Ina 😊 kumbe xikandza xo kaneta xa E-e ☹️.



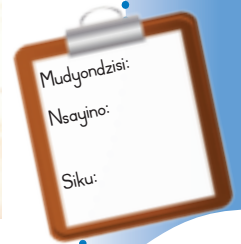
|   |  |   |
|---|--|---|
| <p>Ndzi munghana lonene.</p>  |    |    |
| <p>Ndzi hlayisa vanghana va mina.</p>                        |    |    |
| <p>Ndzi kahle eka vadyondzikulorhi.</p>   |   |   |
| <p>Vadyondzikulorhi va kahle eka mina.</p>  |  |  |
| <p>Ndza titsongahata eka vanhu lava ndzi nga na vona.</p>  |  |  |



**Humelani ehandle**

A hi tlangeni "Yima endzhutini wa mina".

Wena na vanghana wa wena mi fanele mi ringeta ku kandziya mindzhuti ya van'wana. Nyiketani ku vona nhlayo ya mindzhuti leyi mi koteke ku kandziya eka yona. U nga fambafamba ku sivela munghana wa wena leswaku a nga swi koti ku yima endzhutini wa wena.





7

# A ka ha ri na ku karhata van'wana

Kotara ya I – Vhiki ra 4 – Phepha ro tirhela ra



A hi tsaleni

Languta xin'wana na xin'wana xa swifaniso leswi.

Xana a wu ta endla yini loko a wu ri n'wana loyi a karhatiwaka hi van'wana? Etlhelo ka xifaniso xin'wana na xin'wana, tsala xivulwa hi ndlela leyi hi faneleke ku khoma vanhu van'wana ha yona.



---

---

---

---

---

---

---

---



---

---

---

---





### A hi endleni

Tumbuluxani xintlangwana na munghana wa wena hi n'wana loyi a chaviselaka n'wana un'wana.

Kutani vulani leswi hi nga swi endlaka ku sivela ku chaviseriwa.

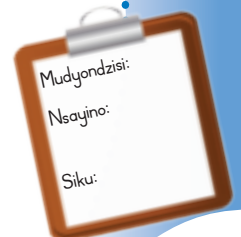


### Humelani ehandle

Tilulamiseni eka mintlawwa ya 5 wa vana.

Kutani vumbani ntila kutani mi hoxelana bolo ku ya hi ntila wa n'wina. Vonani leswaku i ntlawa wihi lowu hoxelanaka bolo ku ya fika emakumu ka wona hi nkarhi lowutsongo swinene. Loko mi endlile sweswo, ringetani ku hoxa bolo hi tindlela to hambana.

- Hoxela mudyondzikuloni loyi a nga endzhaku ka wena bolo yi hundza hi le xikarhi ka milenge ya wena.
- Hoxela mudyondzikuloni loyi a nga endzhaku ka wena bolo yi hundza hi le henhla ka nhloko ya wena.
- Hoxela bolo eka mudyondzikuloni loyi a nga endzhaku ka wena eximatsini.
- Hoxela bolo eka mudyondzikuloni loyi a nga endzhaku ka wena exineneni.
- Sweswi hoxelelanani bolo kutani mi vona leswaku mi kota ku yi qhavulela kangani.





# Hinkwerhu hi hlawulekile

Kotara ya 1 – Vhiki ra 4 – Phepha ro tirhela ra



A hi vulavuleni

Languta swifaniso leswi kutani u hlamusela ndlela  
leji vana lava va fanaka hi yona. Vula leswi va  
hambanisaka xiswona.





### A hi hlayeni

Endlani nghingiriko lowu landzelaka hi ntlawa. Langutani vana hinkwavo etlilasini ya n'wina. Kutani hlayani xin'wana na xin'wana xa swivutiso leswi landzelaka. Loko nhlamulo yi ri ntiyiso, engetelani mfungho wo gwajula (✓) ebokisini leri nga exineneni, kasi loko nhlamulo yi hoxekile, vekela xihambano (X).

|   | Vekala ✓ kumbe X |
|---|------------------|
| Xana vafana na vanhwanyana va fana?                     |                  |
| Xana vanhu hinkwavo va na muhlovo wun'we wa misisi?     |                  |
| Xana vanhu hinkwavo va na muhlovo wun'we wa mahlo?      |                  |
| Xana vanhu hinkwavo va na mavoko lama ringanaka?        |                  |
| Xana vadyondzi va tlilasi yin'we va ringana hi ku leha? |                  |



### A hi vulavuleni

Xana wa swi vona leswaku hinkwerhu ha hambana?  
Xana u tlhela u swi vona leswaku hinkwerhu ha fana?  
Vulavula hi tindlela leti hi fanaka hi tona.

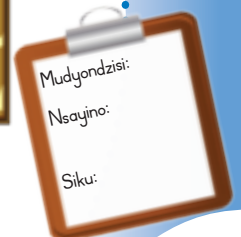


### A hi diroweni

Dirowa xifa niso xa wena, kutani tirhisa xitotamilomo ku endla kandziyiso wa rintiho wa fana woxe etlhelo ka fureme ya xifaniso.



Xana a wu swi tiva leswaku ku hava munhu loyi a nga na nsalelo wa rintiho wo fana na wa wena? U n'waswakwe naswona u hlawulekile





# 9

## Leswi hi titwisaka xiswona

Kotara ya 1 – Vhiki ra 5 – Phepha ro tirhela ra



A hi vulavuleni

Bulani hi leswi mi titwisaka xiswona loko ku humelela nchumu wa kahle eka n'wina. Sweswi bulani hi leswi mi titwisaka xiswona loko mi humelela hi swo biha. Hi vitana matitwelo lawa leji minyanyuko. Tata leswi va titwisaka xiswona.



A hi tsaleni

Tsala tinhlamulo ta swivutiso leswi nga laha hansa.

Xana i yini lexi ku tsakisaka?

Xana i yini lexi ku hlundzukisaka?

Xana i yini lexi ku chaviswiwa?

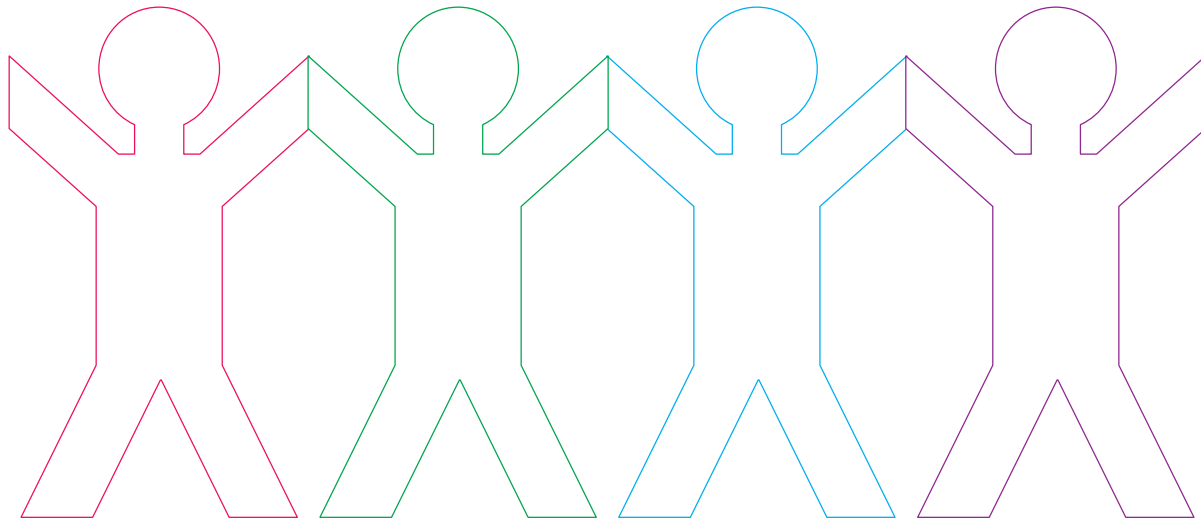
  

Xana i yini lexi ku nyikaka ntsako?



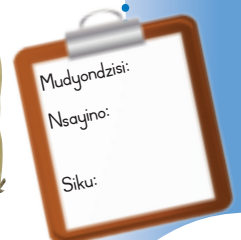
### A hi vulavuleni

Dirowa u tlhela u khalaria nketani ya xinghana. Ringeta ku endla leswaku xipopana xin'wana na xin'wana xi languteka hi ndlela yo hambana, ku kombisa leswaku ha hambana na leswaku un'wana na un'wana u fana swakwe. Loko u endlile leswi u nga tsema nketani ya vunghana eka pheji ra switsemiwa exikarhi ka buku leyi. Endla xipopana xin'wana na xin'wana xi languteka hi ndlela yo hambana kutani u swi yimisa ehenhla ka desika ra wena ku ku tsundzuxa leswaku ha hambana.



### Humelani ehandle

Endla miri wa wena wu va lowukulu hilaha u nga swi kotaka ha kona.  
 Kutani ringeta ku endla miri wa wena wu va lowutsongo hilaha u nga swi kotaka ha kona.  
 Sweswi wu endle wo leha hilaha u nga swi kotaka ha kona.  
 Xo hetelela wu endle wu va wo koma swinene.





A hi vulavuleni Languta swifaniso.

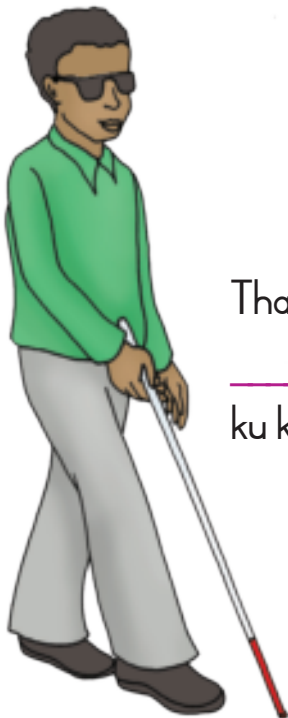
- Xana u vona tinxaka ta vatsoniwa bya njhani?
- Xana un'wana na un'wana wa vana lava u tirhisa yini ku tipfuna?
- Hi ku vona ka wena xana vana lava va na swiphiso swa njhani evuton'wini bya vona bya masiku hinkwawo?
- Vulavula hi leswi hi nga va pfunisaka xiswona.



A hi tsaleni Languta swifaniso leswi nga laha hansi.  
Hetisa swivulwa.

Rosemary a nga swi koti ku famba.

U tirhisa \_\_\_\_\_ ku  
kota ku fambafamba.



xitulu xa mavhilwa

Thabo i bofu kutani u tirhisa

\_\_\_\_\_ ku kota ku kuma ndlela ya yena.

mbyana leyi letelaka





xipfuna-ku-twa



Peter i mbheveve.

U tirhisa \_\_\_\_\_  
ku n'wi pfuna leswaku a kota ku twa.



swikoweto



Jabu a nga swi koti ku vulavula.

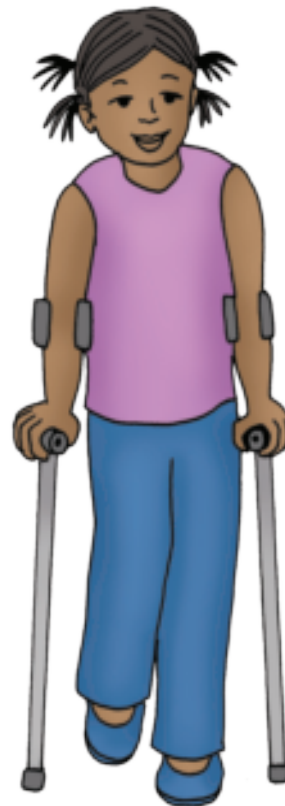
U tirhisa \_\_\_\_\_  
ku vulavurisana na van'wana.



tikhirachisi

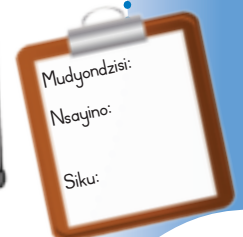
Nomsa u tirhisa

\_\_\_\_\_ ku n'wi pfuna  
leswaku a kota ku famba.



A hi endleni

Tirhisa vumba kumbe dowu yo tlangisa  
ku endla vhasi kumbe khapu.



# Vana hinkwavo va hlawulekile



A hi vulavuleni

Xana vana lava va hambana na wena hi ndlela yihi?  
Xana va fana hi ndlela yihi?



A hi hlayeni

Vanhu emisaveni hinkwayo va tlangela tiholideyi to hlawuleka.

Hinkwerhu hi rhandza ku tlanga no yimbelela.

Hinkwerhu hi lava swakudya leswaku hi ta kota ku dya.

Hinkwerhu hi fanele ku ya exikolweni.

Loko hi vabya hi fanele ku vona dokodela.

Hi fanele ku tshama hi basile.

A hi fanelangi hi boheka ku kuma ntirho.

Hinkwerhu hi vana.





### A hi tsaleni

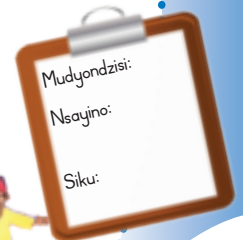
Vutisa 3 wa vanghana swivutiso leswi. Tata tinhlamulo ta vona eswivandleni leswi nga laha hansi.

|   |  |  |  |
|---|--|--|--|
| Tata mavito ya vanghana va wena.                            |  |  |  |
| Xana vukhongereri bya wena hi byihi?                        |  |  |  |
| Xana hi kwihi ku tlangela ko hlawuleka loku u vaka na kona? |  |  |  |
| Xana u dya yini?  |  |  |  |
| Swiambalo swo hlawuleka leswi u swi ambalaka hi swihi?      |  |  |  |
| Xana u tlangela na mani?                                    |  |  |  |



### A hi endleni

Languta xifaniso.  
 I mepe wa misava ya hina. U kota ku swi vona leswaku misava ya hina yi na matiko na malwandle.  
 Khalara malwandle hi muhlovo wa wasi.  
 Khalara matiko hi muhlovo wa buraweni.  
 Dirowa tinhlampfi to hlayanyana endzeni ka lwandle.



# Nghwazi ya mina



**A hi vulavuleni**

Bulani hi loko ku ri na vana va vatsoniwa exikolweni xa n'wina.

Xana xikolo xi nga endla yini ku va pfuna loko va ri exikolweni?  
Xana vatsoniwa va nga va tinghwazi?



**A hi hlayeni**

Tinghwazi tin'wana i vatsoniwa. I vanhu va swikombiso lava hi nga va

landzelelaka. EAfrika-Dzonga ku na tinghwazi to tala ta swa mitlangu leti nga vatsoniwa. Xana u tiva vatsoniwa van'wana lava nga na vuswikoti eka swa mitlangu?

Natalie du Toit u lahlekeriwe hi xiphemu xa le hansi xa nenge wa yena wa ximatsi eka nghozi ya xithuthuthu. U famba hi nenge wo endliwa kambe u hlambela hi nenge wun'we.



**A hi vulavuleni**

Vulavula hi vatsoniwa lava endlaka swilo swo hlamarisa. Anakanya hi:

- Mabofu ya chaya swichayachayana swa vuyimbeleri. Xana ku na un'wana loyi u n'wi tivaka?
- Timbheveve leti tsalaka tinsimu. Ku na loyi u n'wi ehleketaka tanihi xikombiso?





A hi tsaleni

Eswivandleni leswi nga laha hansi, nyika vuxokoxoko hi nghwazi ya wena kumbe munhu wa xikombiso eka wena.

## Nghwazi ya mina kumbe munhu wa xikombiso eka mina i:

Dirowa xifaniso xa munhu loyi a nga nghwazi ya wena kumbe munhu wa xikombiso eka wena. Tsala marito lama n'wi hlamuselaka ekusuhi na xifaniso. Xikombiso: vunghana, ku pfuna van'wana, ku tijsela, ku rhandza vanhu

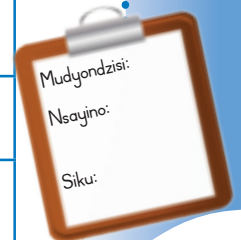
Xana u nga va nghwazi hi ndlela yihi? Bula hi mavonele na munghana wa wena. Sweswi tsala xitshuriwa lexi eka xona u hundzukaka nghwazi. Tatisa eka leswi landzelaka laha hansi:

Siku rin'wana ndzi

Ndzi tekile xiboho xo

Ndzi

Leyi hi yona ndlela leyi ndzi veke nghwazi ha yona.



Mudyondzisi:

Nsajino:

Siku:



# Ku tengisa mati



**A hi hlayeni** Languta nghilazi ya mati.

Xana u vona xanchumu endzeni ka yona?

E-e, u nge voni nchumu. Xana a wu swi tiva leswaku nkarhi wun'wana ku na switsongwatsongwana ematini? Switsongwatsogwana hi leswitsongo swinene naswona u nge swi voni hi mahlo ya wena. Loko wo nwa mati handle ko rhangha hi ku susa switsongwatsongwana, u nga vabya swinene. Hi fanele ku tijisisa nkarhi hinkwawo leswaku mati lawa hi ya nwaka ya basile no va ya tengile.



**A hi vulavuleni**

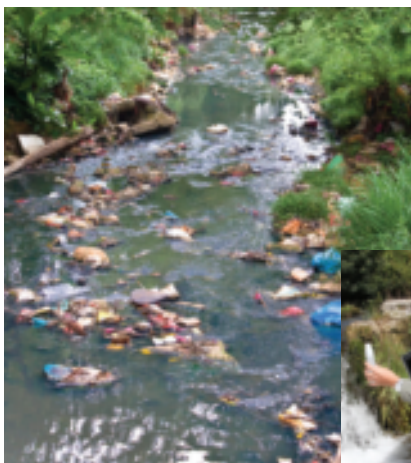
Vulavula hi leswi nga humelelaka loko hi nwa mati ya thyaka. Sweswi languta swifaniso leswi nga laha hansi. Bula na munghana wa wena hi tindlela to hambana leti hi nga ti tirhisaka ku tengisa mati.



Chela mapilisi ya tlorini ematini.



Virisa mati  
5 wa timinete.



Chela tikhemikhali



Sefa mati





### A hi vulavuleni

Hi wahi mati lawa u vonaka leswaku ya lulamile ku nga nwiwa?  
Khalara thonsi ra mati hi muhlovo wa wasi loko u ehleketa leswaku ya lulamile leswaku ya nga nwiwa.

Mati ya nambu



mati ya pitsi



Mati ya pompi



mati lama cheriweke ebodhleleni



Mati ya lwandle



mati lama virisiweke eketleleni



### A hi endleni

Tirhani hi mintlawe mi endla sefo yo tengisa mati. Yingiselani hi vukheta loko mudyondzisi wa n'wina a hlamusela leswi mi faneleke ku endla swona.



### Mi ta fanela ku va na leswi landzelaka:

Bodhlela ra pulasitiki ra 2 wa tilitara

Mati ya ndzhope

Sava leritsongo

Sava ro khwaxa

Xikero

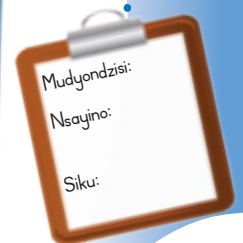
Vutiya



### A hi tsaleni

Nambara magoza yo endla sefo ya mati hi nongonoko lowu faneleke.

|  |   |
|--|---|
|  | Chela sava ehenhla ka vutiya.             |
|  | Hundzuluxa bodhlela ehenhla ku ya ehansi. |
|  | Chela sava ro khwaxa.                     |
|  | Hi vukheta tsema tshaku ra pulasitiki.    |
|  | Chela mati ya ndzhope.                    |
|  | Chela swiribyana endzeni ka bodhlela.     |





14

# Mahanyele lamanene



A hi hlaleni

Hlala hi yin'wana na yin'wana ya mikhuya leyinene na yo biha. Loko u vona wu ri mukhuva lowunene, vekela mfungho wo gwajula (✓) kasi loko u vona wu ri mukhuva wo biha, vekela xihambano (✗).

Kotara ya I – Vhiki ra 7 – Phepha ro tirhela ra

| Mukhuva   | Lowunene | Wo biha |
|---|----------|---------|
| Mudyondzisi u pfuna vana ku hlala.                                      | ✓        | ✗       |
| Ndzi dya swakudya leswinene.  |          |         |
| Ndzi cukumeta thyaka hi fasitere ra movha kumbe ra thekisi.             |          |         |
| Ndzi hlamba misisi ya mina nkarhi hinkwawo.                             |          |         |
| Ndzi dya swiwitsi swo tala.   |          |         |
| Ndzi hlalisa min'wala na tindleve ta mina swi tshama swi basile.        |          |         |
| Ndzi buracha meno ya mina kan'we hi n'hwati.                            |          |         |
| Ndzi rholela thyaka ndzi ri cukumeta ethinini ro chela thyaka.          |          |         |
| Ndzi hlamba mavoko endzhaku ko ya exihambukelweni.                      |          |         |
| Loko ndzi khohlola kumbe loko ndzi entshemula, ndzi pfala nomo hi voko. |          |         |
| Ndzi endla vutiolori nkarhi hinkwawo.                                   |          |         |
| Ndzi hlamba mavoko ndzi nga si dya.                                     |          |         |
| Ndzi tshama ndzi languta TV tiawara to tala.                            |          |         |
| Ndzi tshama na vanhu lavakulu lava dzahaka.                             |          |         |





### A hi vulavuleni

Endla phositara hi mayelana na mukhuva lowunene kumbe mukhuva wo biha.



### A hi tsaleni

Kambisisa phositara ya wena. Hlaya nhlamuselo yin'wana na yin'wana kutani u dirowa xikandza lexi n'wayitelaka loko nhlamuselo yi ri yona kumbe u dirowa xikandza lexi tsaneke eka nhlamuselo leyi nga riki yona.



| Ina | E-e |
|-----|-----|
|     |     |
|     |     |
|     |     |
|     |     |

Phositara ya mina i ya mihlovohlovo naswona yi endliwile hi vukheta.

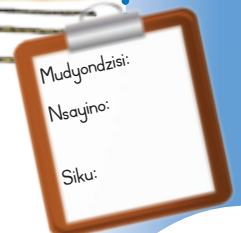
Ndzi tiphinile hi ku endla phositara ya mina.

A swi ndzi tikela ku endla phositara ya mina.



### Humelani ehandle

- Xana u nga tlula ku fika kwihl? Tirhisa tingoti tinharhu. Ti tlule. Tshama u ri karhi u ti hambanisa leswaku u kota ku vona ku u nga tlula ku fika kwihl.
- Endzhaku ka sweswo, kombela vanghana va wena vambirhi leswaku va ba khadi leswaku u kota ku tlula.
- Nyiketani.



Mudyondzisi:  
 Nsayino:  
 Siku:



# Swilo leswi onhakaka na leswi nga onhakeki

Kotara ya I – Vhiki ra 8 – Phepha ro tirhela ra



A hi vulavuleni



Vulavula hi swakudya leswi faneleke ku hlayisiwa swi tshama swi ri karhi swi titimela ku sivela leswaku swi nga onheki. Hlawula leswaku i swakudya swihi leswi nga laviki ku hlayisiwa endhawini leyi titimelaka kambe swi nga vekiwaka endzeni ka khabodo. Tsema swifaniso eka pheji ra switsemiwa kutani u swi damarheta exigwitsirisini kumbe ekhabodweni.





A hi vulavuleni

Vulavula hi tindlela to sirhelela swakudya eka switsotso swo fana na tinhongana na vusokoti.

|              |
|--------------|
| Mudyondzisi: |
| Nsajino:     |
| Siku:        |



# Masiku ya swa vukhongereri na man'wana yo hlawuleka



A hi hlayeni

Vanhu emisaveni hinkwayo va tlangela tiholideyi to hlawuleka. Xana u ta tlangela tiholideyi tihi?

Hi nkarhi wa Khisimusi hi amukela tinyiko. Hi tlhela hi nyika vanghana na va mindyangu ya hina tinyiko. Hi na nsinya wa Khisimusi endlwini ya ka hina. Hi veka tinyiko ehansi ka wona. Hi sasekisa nsinya lowu hi tlhela hi veka nyeleti ehenhla. Hi Khisimusi hi dya swakudya leswinene swo tala swinene.



Hi jafele siku ra Diwali. Lowu i nkarhi wo amukela swiwitsi swo tala swinene na tinyiko to tala swinene. Hi paka makhekhe na swiwitsi swo tsokombela emabokisini kutani hi swi nyika vanhu lava hi endzelaka. Hi lumeka swimbonana kutani hi swi veka hinkwako endlwini. Hi sasekisa yindlu ya hina naswona hi va na tikhirikete.



Hi jafele siku ra Hanukkah. Hi ta va na swakudya leswinene swo tala ngopfu. Hi rhandza ku dya khekhe ra panekuku na tidonati. Hi tsakela no amukela tinyiko. Vakhazi va hina va hi endzela. Hinkwerhu hi pfuneta ku lulamisa swakudya naswona hi lumeka makhandhlela endlwini ya hina.



Ku nga ri khale ku ta va Eid. Ndzi tshemba leswaku hi ta amukela tinyiko ta kahle. Hi ta nyika na vanghana va hina. Hi ta va na swiwitsi na makhekhe yo tala swinene. Hi tiva leswaku i Eid hikwalaho ka xivumbeko xa n'weti. Yi va kona hi masiku yo hambana lembe rin'wana na rin'wana.



**A hi yimbeleleni**

Yimbelela risimu leri u ri tivaka ra masiku lama yo hlawuleka.



Mudyondzisi:  
 Nsayino:  
 Siku:

# Tinguva

Languta swifaniso swa tinguva ta mune. Hlamusela munghana wa wena leswi u swi vonaka eka xifaniso xin'wana na xin'wana. Vula leswi tinguva ta mune ti hambanisaka xiswona.

A hi vulavuleni

Kotara ya 2 – Vhiki ra 1 – Phepha ro tirhela ra



Hi yihi nguva leyi u yi rhandzaka swinene? \_\_\_\_\_

Hikwalaho ka yini u rhandza nguva leyi? \_\_\_\_\_

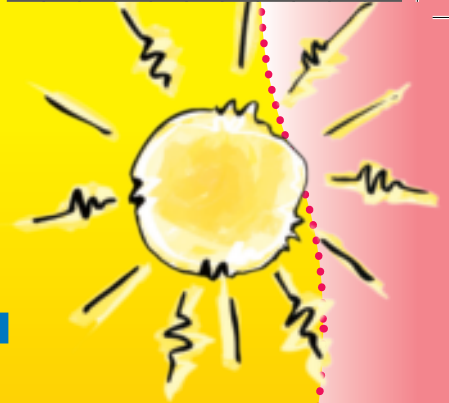
Xana siku ra wena ra ku velekwa ri hi nguva yihi? \_\_\_\_\_

Siku: .....



A hi yimbeleleni

**Vonani dyambu ra huma  
Hlambani tinhloko vafana  
Twanani nsimbhi ya rila  
Tsutsumelani xikolweni**



**Mpfula ya na thothotho!  
Hi ta dya matimba thothotho!  
Mpfula ya na thothotho!  
Hi ta dya timanga thothotho!**



Mudyondzisi:  
Nsayino:  
Siku:



18

# Tinguva ta mune



A hi vulavuleni

Tsema swifaniso swa tinguva ta mune ku suka eka phepha ra switsemiwa. Damarheta xifaniso xin'wana na xin'wana etlhelo ka vito ra nguva leji faneleke.

Kotara ya 2 – Vhiki ra I – Phepha ro tirhela ra



Khotavuxika

Mawuwani

Mhawuri

xixika

Ndzhati  
Nhlangula  
Hukuri  
ximun'wana





N'wendzamhala

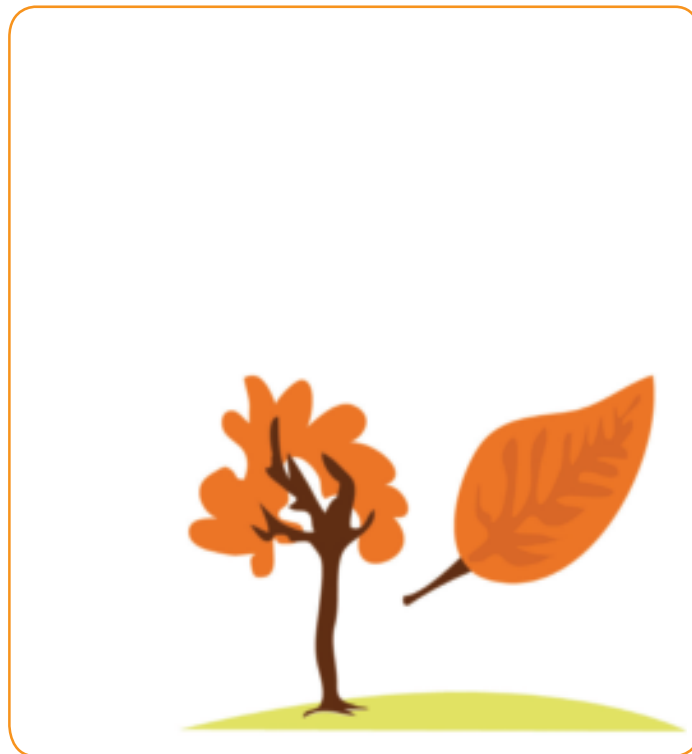
Sunguti

Nyenyenyani

ximumu

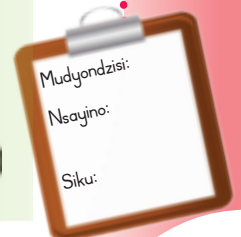
Nyenyankulu  
Dzivamisoko  
Mudyaxihi

xixikana



Humelani ehandle

Titolovete matlangelo ya bolo.  
Bambisa bolo ekhumbini.  
Famba endhawini u ri karhi u bambisa bolo.  
Sweswi tsutsuma u bambisa bolo ekusuhi na tipakani.



Mudyondzisi:  
Nsajino:  
Siku:





A hi hlayeni



## Ximumu

Maxelo ya hisa no kufumela.

Nhlekanhi wu lehile kasi vusiku byi komile.

Hi nga endla miri wa hina wu tshama wu horile hi ku khida kumbe ku tshama endzhutini.

## Xixikana

Maxelo ya sungula ku titimela.

Matluka ya sungula ku hundzuka ya va ya nsuku no tshanela ehansi.

Swinyenyana swi hahela etindhawini leti kufumelaka.



## Xixika

Maxelo ya titimela.

Etindhawini tin'wana ku wa gamboko.

Nhlekanhi wu komile kasi vusiku byi lehile.

Swiharhi swin'wana swi tumbela vuxika hinkwabyo (swi nghena emiceleni).

## Ximun'wana

Swimila swi sungula ku hluka naswona mirhi ya rhumbuka.

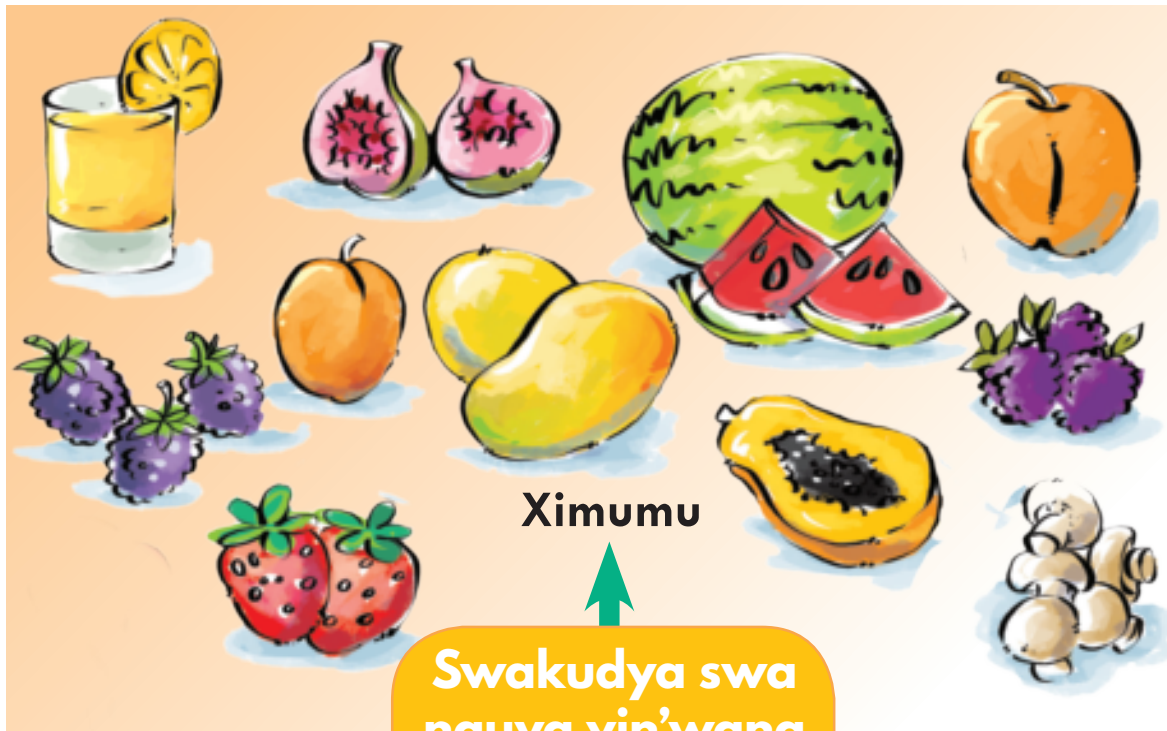
Swinyenyana swi sungula ku aka swisaka no tshikela matandza.





A hi vulavuleni

Swakudya swo hambana swi kumeka hi tinguva to hambana. Languta swakudya leswi swa nkarhi wa ximumu na swa nkarhi wa xixika. Byela munghana wa wena leswaku hi swihi swakudya leswi u tsakelaka ku swi dya loko ku hisa na leswaku hi swihi leswi u tsakelaka ku swi dya loko ku titimela.



Swakudya swa nguva yin'wana na yin'wana



Mudyondzisi:  
 Nsayino:  
 Siku:



20

# Ku ambala ku ya hi maxelo

Kotara ya 2 – Vhiki ra 2 – Phepha ro tirhela ra



A hi diroweni

Dirowa mufana na nhwanyana. Mufana u fanele ku ambala swiambalo swo kufumela swa vuxika kasi nhwanyana u fanele ku ambala swiambalo swo hola swa ximumu.



|        |           |
|--------|-----------|
|        |           |
| Mufana | Nhwanyana |



A hi tiololeni

- Veka tihupu ehansi kumbe u dirowa swirhendzevutana esaveni.
- Loko mudyondzisi a lerisa leswaku u tlula, tlulela endzeni ka xirhendzevutana hi milenge hinkwayo.
- Loko mudyondzisi a lerisa leswaku u tlula, tlulela ehandle ka xirhendzevutana hi nenge wun'we.
- Tlanga xikoci.
- Tirhisa choko ku dirowa swirhendzevutana na swikwere ehansi.





A hi vulavuleni

Hlamusela munghana wa wena hi swiambalo leswi ambariwaka eka nguva yin'wana na yin'wana. Hi swihi swiambalo leswi u tsakelaka ku swi ambala?

Dirowa ntila ku suka eka nhlamuselo ku ya eka swiambalo leswi hi swi ambalaka eka maxelo lama.

A hi tsaleni



## Ku ambalela maxelo

Loko ku hisa hi fanele ku ambala swigqhoko leswaku swi hi sirhelela eka dyambu.



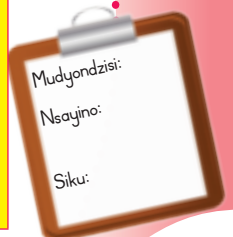
Loko ku kufumela hi fanele ku ambala swiambalo swo hola.



Loko ku titimela hi fanele ku ambala swiambalo swo kufumela swa wulu.



Hi masiku ya mpfula hi fanele ku va na jazi ra mpfula na xambhulela.





A hi hlayeni



## Ximun'wana



Hi ximun'wana mirhi yi  
sungula ku hluka.

Hi vona swinyenyana swo tala,  
tinyoxi na swiluva.

Swinyenyana swi aka swisaka no  
tshikela matandza.

Vafuwi va kera tinyimpfu.

## Ximumu

Hi ximumu varimi va kha mihandzu.  
Vana va swiharhi va  
gingirika swinene.

Etindhawini to tala mpfula yi na  
ngopfu, ku dzindza tilo ku  
tlhela ku va na rihati.

Byanyi, nhova na swiluva swi mila  
hi ku hatlisa. Mirhi ya kula  
yi va yo leha.





### Xixikana

Swiharhi swin'wana swi hlajisa swakudya tanihi leswi swi lulamiselaka ku tumbela vuxika hinkwabyo.

Matluka ya mirhi ya sungula ku hundzuka ya va ya xitshopana, buraweni, yo tshwuka na xilamula.

Byanyi byi sungula ku hundzuka byi va bya buraweni.



### Xixika

Swin'wana swiharhi swa tumbela hi xixika. Swa kufumela hikuva voya bya swona byi sungula ku tala.



### A hi tsaleni

Xana swin'wana swiharhi swi endla yini hi vuxika? \_\_\_\_\_

Xana swin'wana swiharhi swi tisirhelela hi ndlela yihi eka xirhami? \_\_\_\_\_

Xana swinyenyana swi tlhelela rini ematikweni lama kufumelaka no sungula ku tshama eswisakeni? \_\_\_\_\_



# Ku byala ximilana xa nyawa

Kotara ya 2 – Vhiki ra 3 – Phepha ro tirhela ra



A hi endleni

## U fanela ku va na:

- tinyawa
- vutiya
- sosara
- mati



## Leswi faneleke ku endliwa



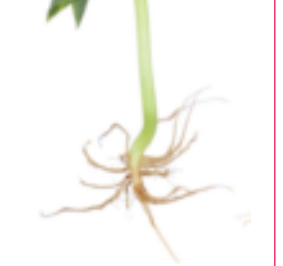

Veka tinyawa endzeni ka vutiya esosareni. Swi fanele ku tshama swi ri karhi swi tsakama. Veka sosara efasitereni laha ku nga na masana. Xiya tinyawa eka mavhiki mambirhi lama landzelaka. Vona leswi ti kurisaka xiswona.



Languta xifaniso xa ximilana xa nyawa.

Loko ximilana xa wena xi languteka tanihi lexi, tsala siku.



| Siku  | Siku  | Siku   | Siku  |
|---|---|--|---|
|  |  |  |  |

Siku: .....



A hi endleni

Endla ntlangu wa xiharhi

U nga kombisa bere kumbe maxindyana xi ri karhi xi hlengeleta no hlajisa swa nkarhi wa vuxika.



Humelani ehandle



Kokova ehansi tanihi nyoka  
leyi lavaka ndhawu leyi yi nga  
nghenaka eka yona  
yi tumbela.

Haha tanihi mbewulani  
leyi yaka endhawini  
leyi kufumelaka.



Mudyondzisi:  
Nsajino:  
Siku:



# Swifuwo swa le purasini

Kotara ya 2 – Vhiki ra 4 – Phepha ro tirhela ra



A hi vulavuleni

Languta xifaniso kutani u vulavula hi swifuwo swo hambana leswi u swi vonaka.

Hi xihhi xiharhi lexi u xi tsakelaka swinene?

Hi kuma yini eka xin'wana na xin'wana xa swiharhi leswi?





A hi tsaleni

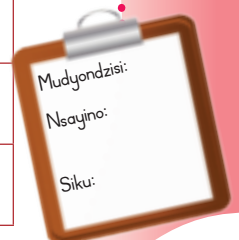
Tatisa nhlamulo leji faneleke eka matafula lama landzelaka. Hi ku endlele yo sungula.

|  |            |           |
|--|------------|-----------|
|  | Xinuna     | Xiphongo  |
|  | Xisati     | Thokazi   |
|  | N'wana     | Ximbutana |
|  | Mpfumawulo | Mee!      |
|  | Vutshamo   | Tshanga   |

|  |            |  |
|--|------------|--|
|  | Xinuna     |  |
|  | Xisati     |  |
|  | N'wana     |  |
|  | Mpfumawulo |  |
|  | Vutshamo   |  |

|  |            |  |
|--|------------|--|
|  | Xinuna     |  |
|  | Xisati     |  |
|  | N'wana     |  |
|  | Mpfumawulo |  |
|  | Vutshamo   |  |

|  |            |  |
|--|------------|--|
|  | Xinuna     |  |
|  | Xisati     |  |
|  | N'wana     |  |
|  | Mpfumawulo |  |
|  | Vutshamo   |  |



A hi yimbeleleni



Macdonald u na purasi

Hiya hiya ho

Epurasini ku na tihomu

Ku twala mho mho, mho, mho!

Mho laha, mho le,

mho hinkwako

Macdonald u

na purasi

Hiya hiya ho





### A hi yimbeleleni

Yanani emahlweni no yimbelela risimu. Sivani rito tihomu hi swiharhi leswi.



### Humelani ehandle

- Famba ehenhla ka mhandze handle ko wa.
- Hoxa bolo empfhukeni kutani u yi khoma handle ko wa.
- Kutani tsutsuma tanihi hanci.
- Famba tanihi sekwa.
- Famba tanihi rhoboto.

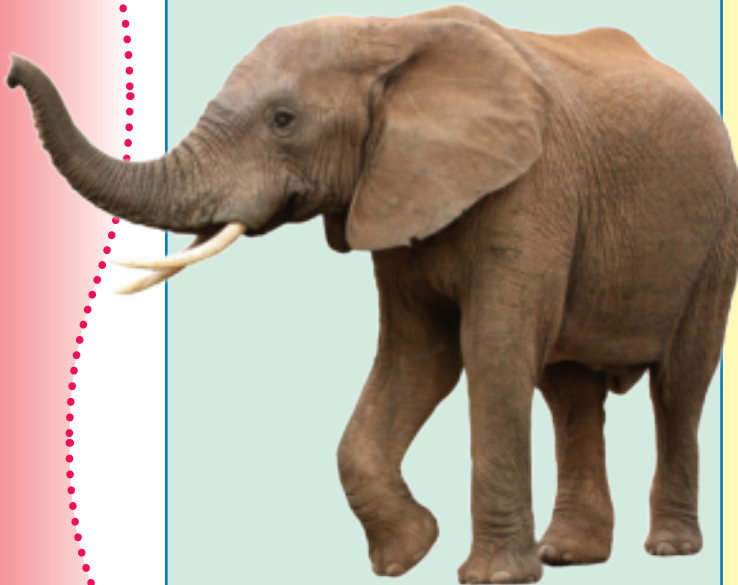




A hi hlayeni



Tinghala ti wela eka ndyangu wa swimanga. Nghala yi tekiwa tanihi hosi ya swiharhi. Ti hlota no dlaya swiharhi swo tanihi timhala na timangwa. Tinghala ta xisati hi tona ti hlotaka swinene. Ti hlota nivusiku hi mintlawwa. Tinghala ti rhandza ku tshama etindhawini leti pfulekeke leti nga na byanyi. Tinghala ti bongwa hi rito lerikulu.



Tindlopfu i swian'wisi leswikulu ngopfu etikweni. Ti le khombyeni masiku hinkwawo hikuva vahloti va tindlopfu va lava matino ya tona. Tindlopfu ti tshama ti ri karhi ti kula vutomi bya tona hinkwabyo. Tindlopfu ti tirhisa mixakwa ya tona ku rholela timitsu, mihandzu na mati ti nghenisa emilon'wini ya tona.



Ku na tinxaka timbirhi ta timhelembe – ta ntima na to basa. Timhelembe a ti voni kahle, kambe ti kota ku nuhetela swinene.

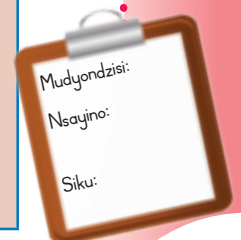
Timhelembe i tikulu swinene naswona ti na ntiko wo fika eka 2 500 kg. Timhelembe ti hloteriwa timhondzo ta tona hi vahloti. Hi fanele ku sirhelela timhelembe eka vahloti lava ti dlayaka hi xikongomelo xo kuma timhondzo ta tona.



Yingwe leyikulu yi nga kula ku fika eka 2 m. Voya bya yona i bya buraweni na mavala ya swirhendzevutana. Yingwe yi kota ku khandziya kahle naswona a yi tikeriwi hi ku hlota emirhini.



Tinyarhi ti hanya hi mitlhambi. Loko ku ri na khombo tinyarhi ta xisati na swirhodyana swi hlengeletana exikarhi ka ntlhambi naswona ti rhendzeriwa hi tinyarhi ta xinuna leswaku ti ti sirhelela. Tinyarhi tin'wana ti nga kula ku fika eka ku leha ka 1,7 m.



# Leswi swiharhi swi tumberisaka xiswona

Kotara ya 2 – Vhiki ra 5 – Phepha ro tirhela ra



A hi hlayeni



Mavala ya timangwa ya endla leswaku u nga swi kotu ku vona mangwa ekhwatini.

Swin'wana swiharhi swi tisirhelela hi ku cinca leswi swi nga xiswona leswaku swi fana na ndhawu ya laha swi nga kona.

Rimpfani ri nga cinca muhlovo wa rona leswaku ri fana na mirhi leyi ri yi khandziyaka.

Voya kumbe tinsiva ta swiharhi hi swin'wana swi tekelelaka hi ndlela leyi endlaka leswaku swi tika ku vona swiharhi sweswo.

Ehleketi hi swiharhi swin'wana leswi kotaka ku hundzuka.



A hi hungaseni

Mudyondzisi wa n'wina u ta mi komba ku tlangisa switulu swa vuyimbeleri.





A hi endleni

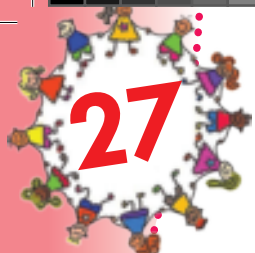
Dirowa xiharhi xa nhova.

Hlamusela munghana wa wena hi ndlela leyi xiharhi xi tihundzulaka hiyona.



Mudyondzisi:  
Nsajino:  
Siku:





27

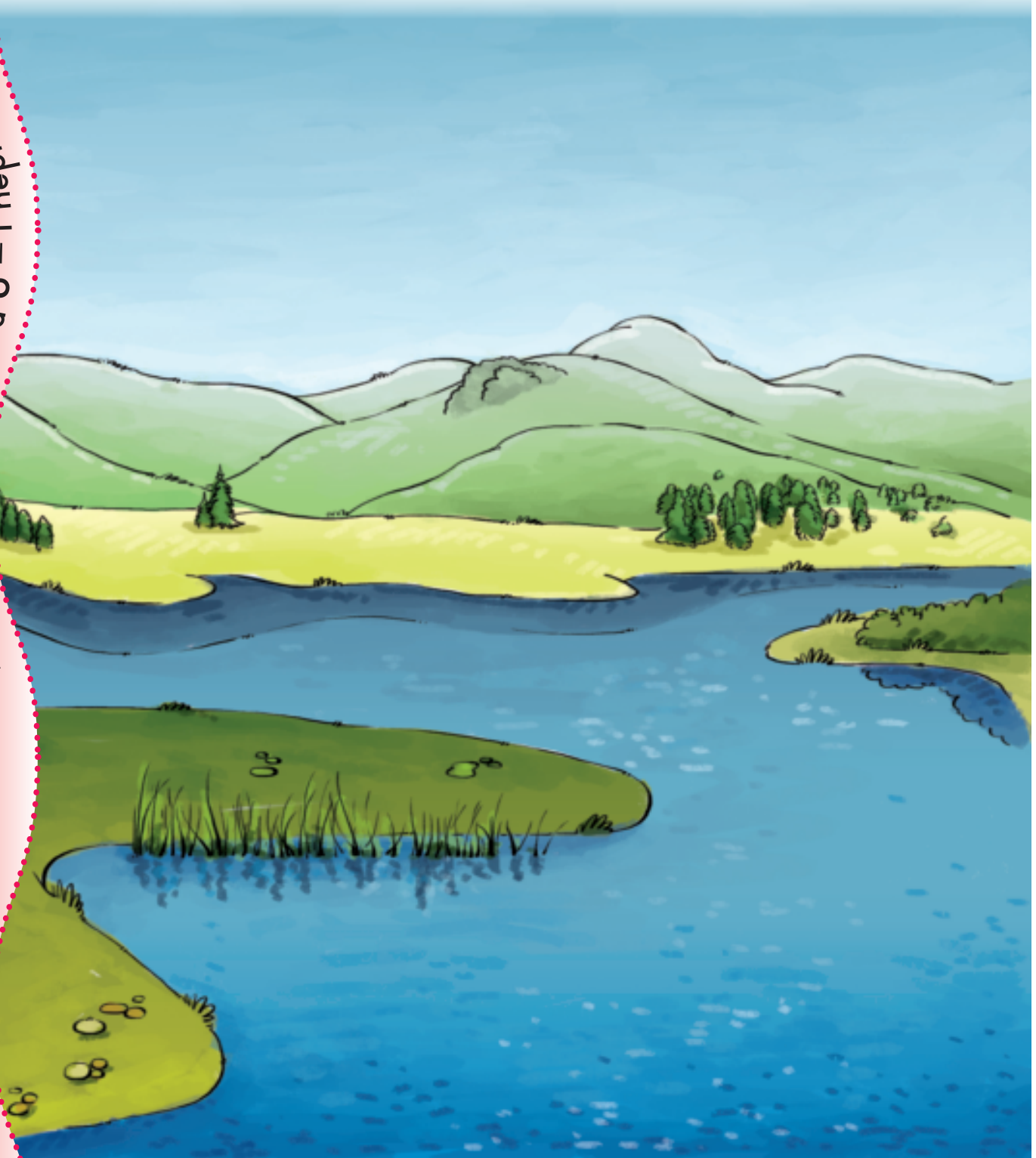
# Swiharhi swa le matini



A hi vulavuleni

Hetisa xifaniso hi ku engetela swifaniso swa swiharhi leswi hanyaka enambyeni.

Kotara ya 2 – Vhiki ra 6 – Phepha ro tirhela ra





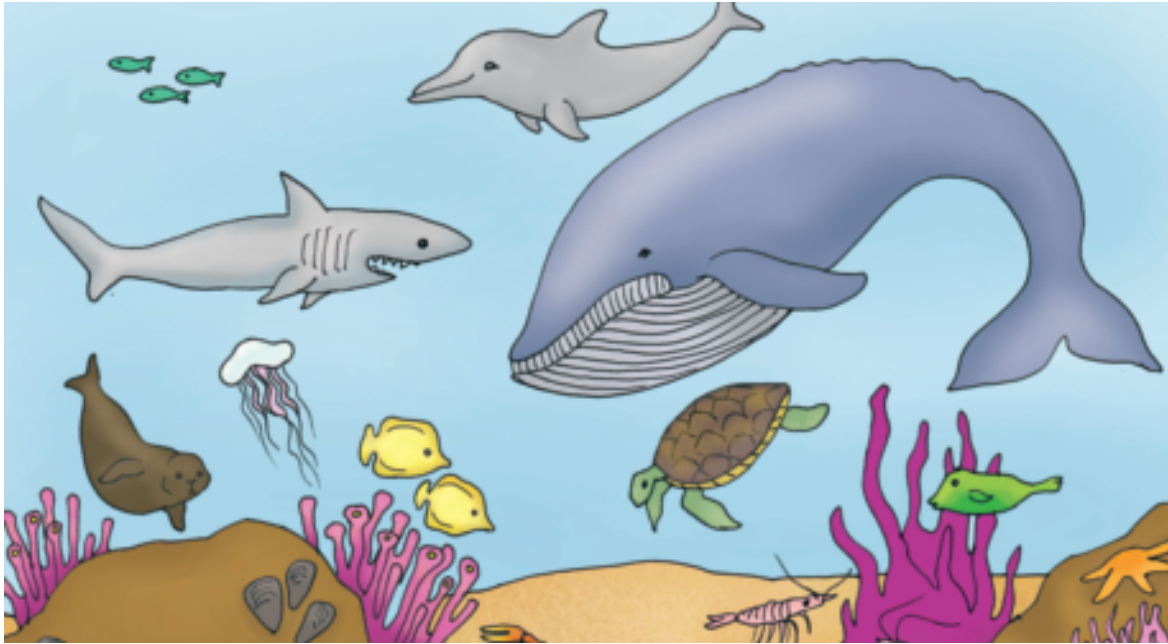
# Swivumbiwa swa le Iwandle

28

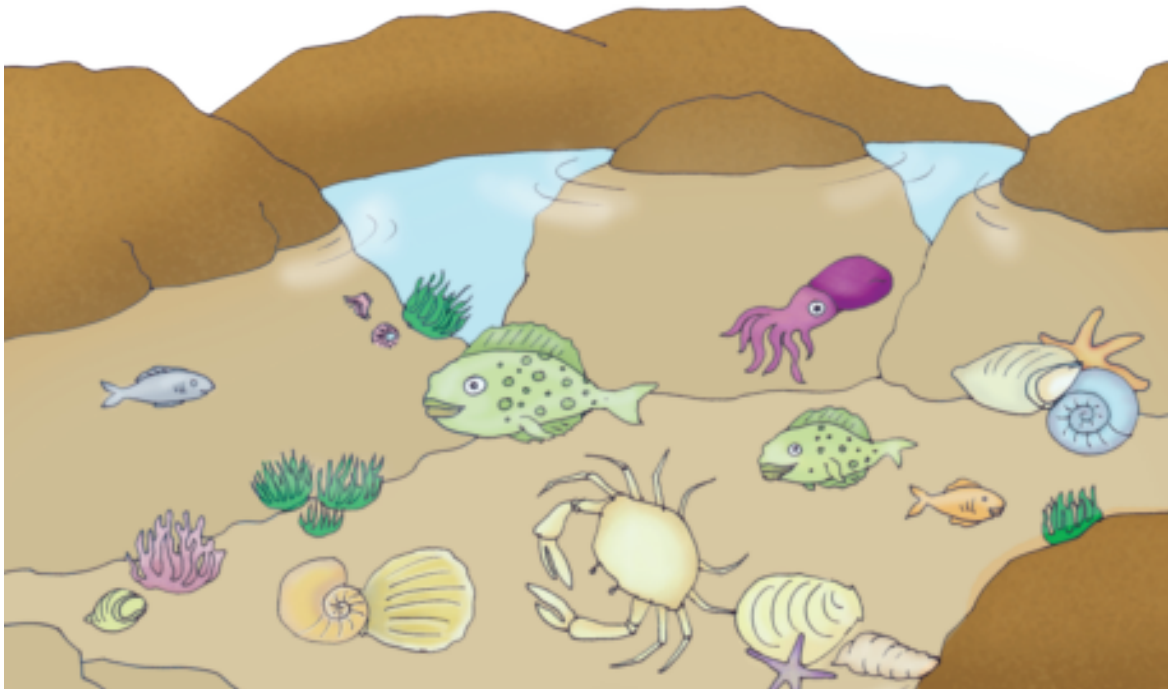


A hi vulavuleni

A hi languteni swiharhi hinkwaswo swo hambana leswi hanyaka ematini ya munyu.



Ku tlhela ku va na swihadyana, leswi hanyaka eswidan'wanini leswi nga na maribye ematini lama nga entangiki.



Kotara ya 2 – Vhiki ra b – Phepha ro tirhela ra

Mudyondzisi:  
 Nsayino:  
 Siku:





# 29

# Vutshila bya swiharhi

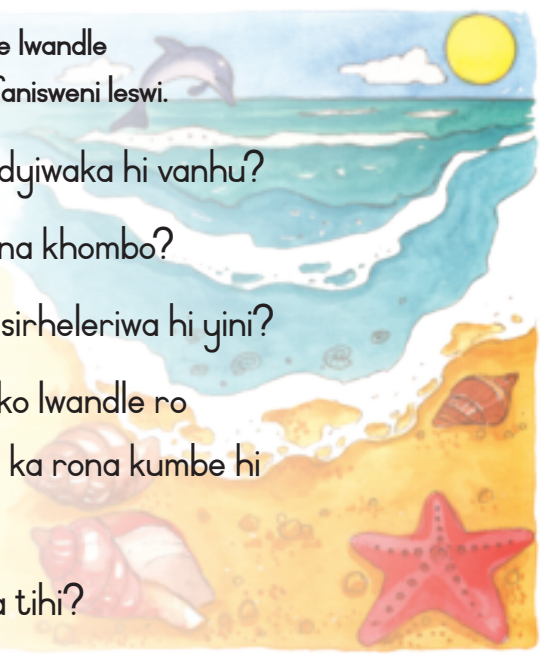
Kotara ya 2 – Vhiki ra 7 – Phepha ro tirhela ra



### A hi vulavuleni

Vulavula hi swiharhi swa le lwandle hinkwaswo leswi nga eswifanisweni leswi.

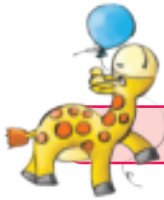
- Hi swihi swiharhi swa le lwandle leswi nga dyiwaka hi vanhu?
- Hi swihi swiharhi swa le lwandle leswi nga na khombo?
- Xana miri wa nhlampfi wu phutseriwe no sirheleriwa hi yini?
- Hi ku vona ka wena ku ta humelela yini loko lwandle ro thyakisiwa hi leswi cukumetiwa endzeni ka rona kumbe hi swilo leswi nga na chefu?
- Xana lwandle ni nga thyakisiwa hi tindlela tihi?



### A hi tsaleni

Tsala mavito ya swiharhi leswi u tivaka leswaku swi tshama emilambyeni, emadan'wini kumbe elwandle eka tikholomu tinharhu ta tafula.

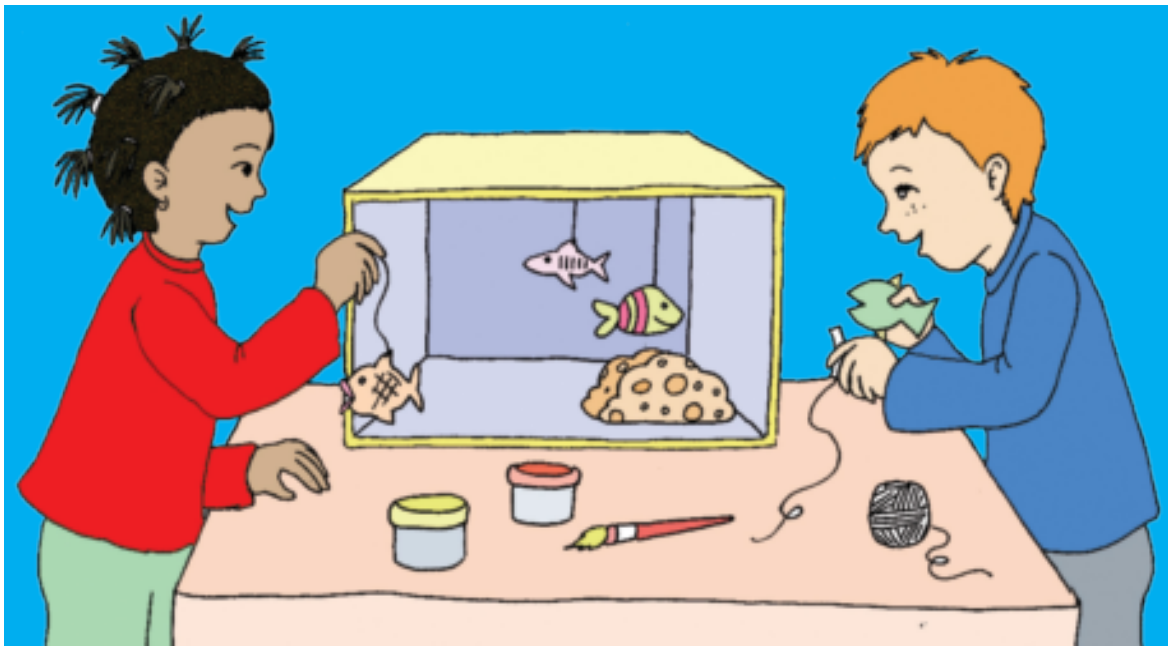
| Nambu | Lwandle | Damu |
|-------|---------|------|
|       |         |      |
|       |         |      |
|       |         |      |
|       |         |      |
|       |         |      |
|       |         |      |
|       |         |      |
|       |         |      |



**A hi endleni**

Endla thangi ra wena ra nhlampfi.

- Penda endzeni ka bokisi ra tintanghu hi muhlovo wa wasi na wa rihlaza kutani u ri hundzuluxa eka matlhelo ya rona.
- Kutani tsema nhlampfi emakumu ka buku.
- Khomisa nhlampfi ehenhla ka bokisi hi thepe na ngoti.



**Humelani ehandle**

- Haha tanihi nyenyana.
- Famba tanihi phengwini.
- Haha tanihi nyoxi.
- Famba tanihi nkokotso.
- Khida tanihi nhlampfi.
- Tlula tanihi chela.
- Tlangani ntlangu wo landzelela murhangeri.
- Tlangani ntlangu wa ximanga na kondlo.



# Swiharhi leswi fambafambaka na makaya ya swona



A hi hlayeni



Xana a wu swi tiva? Ndza ringanela exiphambatini xa mina, a xi vi lexitsongo eka mina.

## Xibodze

Xibodze i xikokovi lexi nga na milenge leyi nga na mahakatimba. Xi famba hi ku nonoka na yindlu ya xona ya xiphambati enhlaneni wa xona.

**Xana u tshama kwihl?**



Mfutsu: Ndzi tshama elwandle.



Therapini: Ndzi tshama ematini yo tenga etindhawini leti tsakamaka.



Xibodze: Ndzi hanya etikweni.



A hi tsaleni

Hlamula swivutiso leswi hi xibodze lexi tshamaka etikweni.

Xana xiphambati xa xibodze xa olova kumbe xa nonoha? \_\_\_\_\_

Xana xiphambati xa xibodze xi xi sirhelela eka yini? \_\_\_\_\_

Xana xibodze xi endla yini loko xi chava? \_\_\_\_\_

Xibodze xi dya swakudya swa njhani? \_\_\_\_\_

Siku: .....



# Humba

Languta xiphambati xa humba.

Tihlo

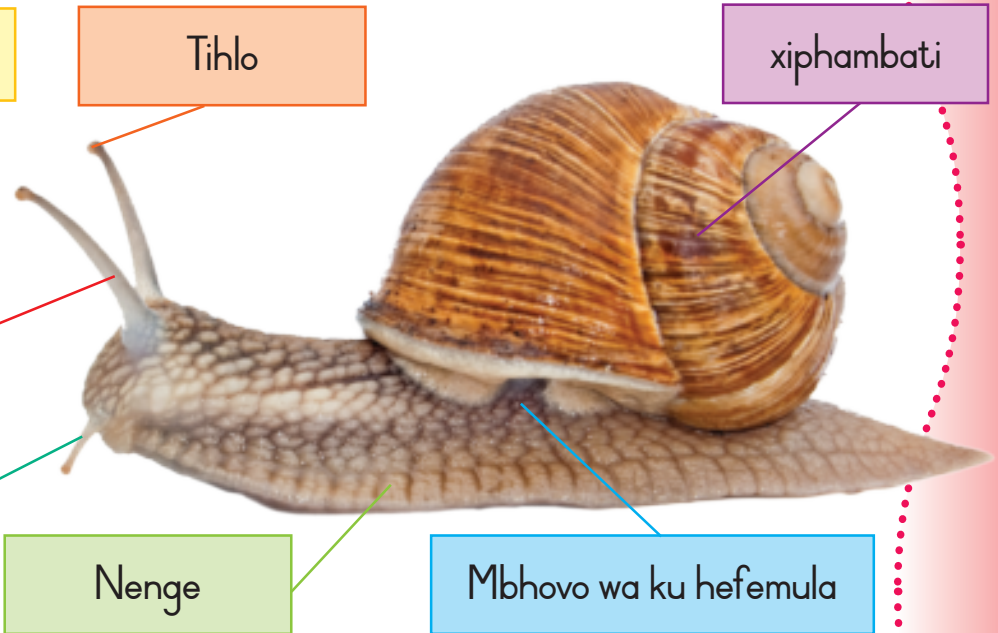
xiphambati

Xiambamberi xo leha

Xiambamberi xo koma

Nenge

Mbhovo wa ku hefemula



Xana humba yi famba njhani? \_\_\_\_\_

Xana u tshama u kuma xiphambati xa humba lexi nga riki na nchumu?  
U ehleketa leswaku ku humelele yini eka humba? \_\_\_\_\_

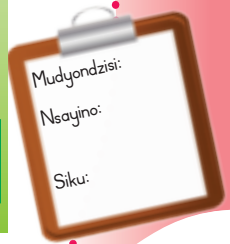
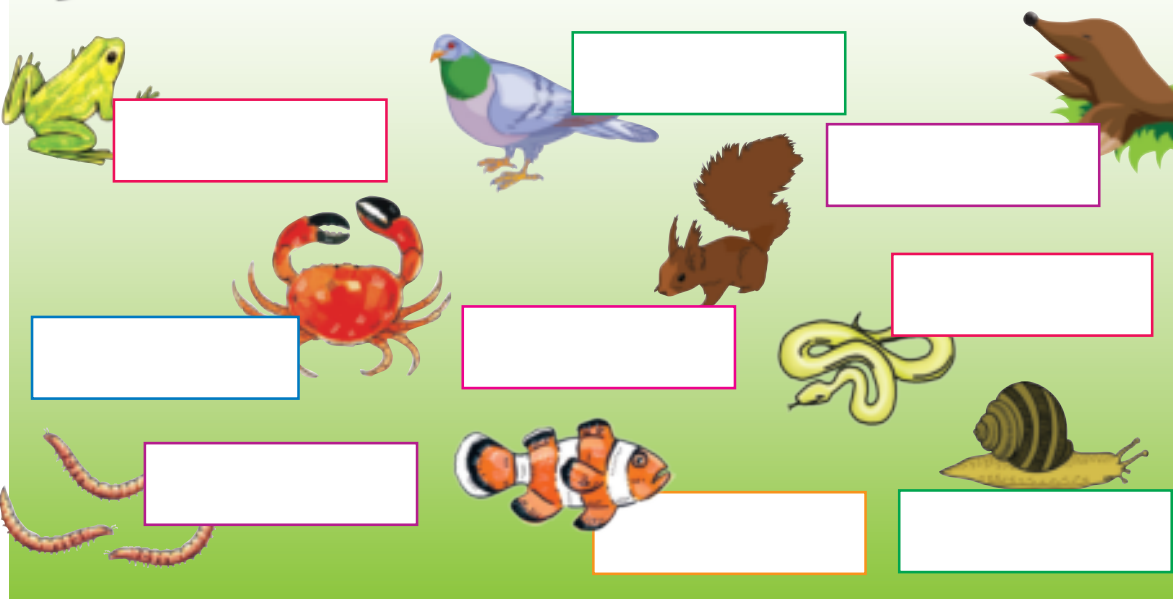
Xana swiphambati swa tihumba i swa muhlovo muni? \_\_\_\_\_

Hi ku vona ka wena hikwalaho ka yini tihumba ti ri na swiphambati? \_\_\_\_\_



A hi tsaleni

Xana ndzi tshama kwihi? Etlhelo ka xifaniso xa mina, tsala loko ndzi nga aka kaya ra mina **emurhini**, **ehansi** kumbe **ematini**.





31

# Swiharhi leswi tiakelaka vutshamo



A hi vulavuleni

Hlanganisa swifaniso swa swiharhi leswi na makaya ya swona.

Kotara ya 2 – Vhiki ra 8 – Phepha ro tirhela ra



A hi hlayeni

## Tinyoxi



Tinyoxi ti tshama eswisakeni swa tinyoxi.  
Ti aka swisaka swa tona hi ku tirhisa mhula.  
Ti hlayisa swakudya eswisakeni swa tona.





## Vusokoti

Vusokoti byi aka tinxaka to hambana ta vutshamo embangwini wa byona. Risokoti leritsongo ri nga rhwala nchumu lowu ri tlulaka ka mune. Vusokoti bya vulavurisana. Bya lemukisana loko ku ri na khombo naswona bya byelana leswaku swakudya swi kumeka kwihl.



A hi tsaleni

Hi ku ehleketa ka wena hikwalaho ka yini vusokoti byi tiakela vutshamo bya byona? \_\_\_\_\_

\_\_\_\_\_

Valala va vusokoti i vamani? \_\_\_\_\_

\_\_\_\_\_

Xana vusokoti byi tirhisa yini ku aka vutshamo bya byona? \_\_\_\_\_

\_\_\_\_\_



A hi hlayeni

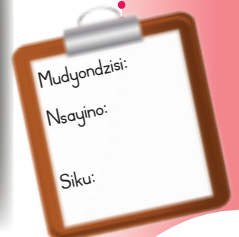
## Swinyenyana

Swinyenyana swi aka swisaka tanihi vutshamo bya swona no kuma ndhawu yo tshikela matandza ya swona. Xana swinyenyana swi tirhisa yini ku aka swisaka swa swona?

\_\_\_\_\_

Hi xihl xiharhi lexi nga nala wa xinyenyana?

\_\_\_\_\_





Dikixinari ya munda

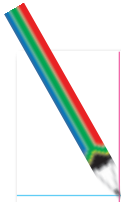
|   |  |  |     |
|---|--|--|-----|
| A |  |  | M   |
| a |  |  | m   |
| B |  |  | N   |
| b |  |  | n   |
| C |  |  | O   |
| c |  |  | o   |
| D |  |  | P   |
| d |  |  | p   |
| E |  |  | Q   |
| e |  |  | q   |
| F |  |  | R   |
| f |  |  | r   |
| G |  |  | S   |
| g |  |  | s   |
| H |  |  | T   |
| h |  |  | t   |
| I |  |  | U   |
| i |  |  | u   |
| J |  |  | V   |
| j |  |  | v   |
| K |  |  | W   |
| k |  |  | w   |
| L |  |  | X-Z |
| l |  |  | x-z |





A large rectangular area containing a vertical red margin line on the left side and horizontal blue lines for writing, typical of a primary school notebook page.

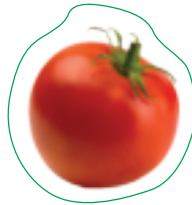
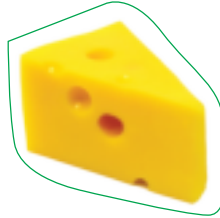
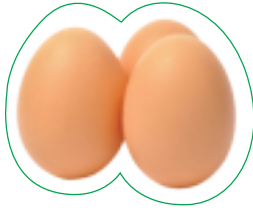
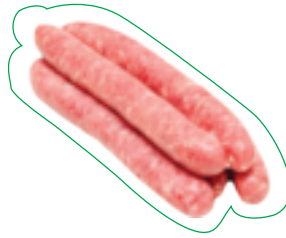
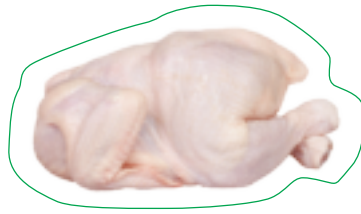




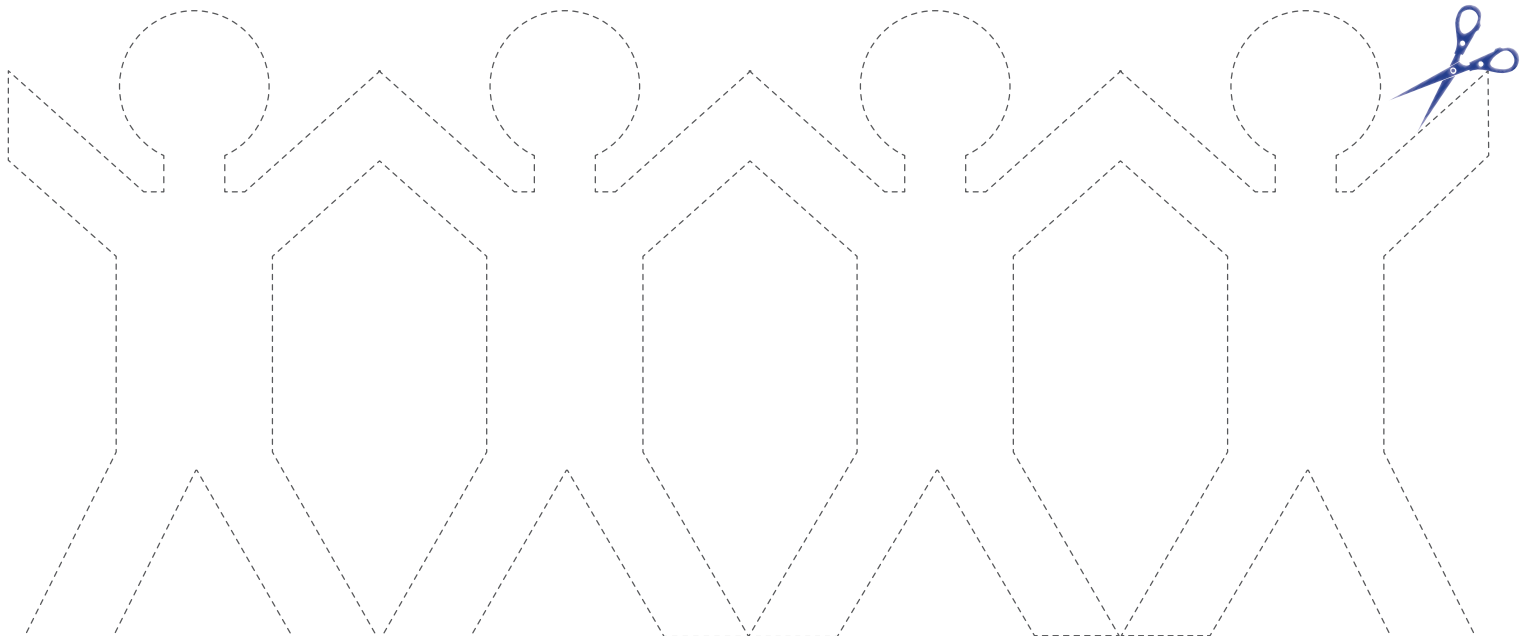
A large rectangular writing area with a vertical red margin line on the left and horizontal blue lines for writing. The page is otherwise blank.



P.29

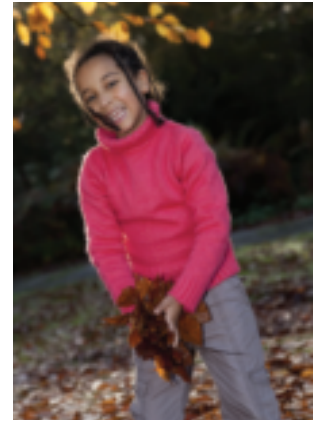
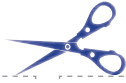


P.19





P.36-37



P.57

