

E tihabolotswe e
bile e tsamaelana
le PPKT

Mophato

2



Dikgono tsa Botshelo
Setswana

Buka 1 – Kgweditsharo 1 & 2



Leina:

Phaposi:

ISBN 978-1-4315-0259-2



9 781431 502592



LIFE SKILLS IN SETSWANA
GRADE 2 – BOOK 1
TERMS 1 & 2

ISBN 978-1-4315-0259-2
THIS BOOK MAY NOT BE SOLD.

14th Edition

Workbooks available in this series:

- Grade R
(in all official Languages);
- Literacy/Home Language Grades 1 to 6
(in all 11 official Languages);
- Mathematics Grades 1 to 3
(in all 11 official Languages);
- Mathematics Grades 4 to 9
(in Afrikaans and English);
- Life Skills Grades 1 to 3
(in all 11 official Languages); and
- Grades 1 to 6 English First Additional
Language.



basic education
Department:
Basic Education
REPUBLIC OF SOUTH AFRICA

Diteng

Kgweditharo 1

Tsebe

- 1 Re tlhoka dijo tse di itekanetseng go tshela 2
- 2 Metsi a re naya botshelo 4
- 3 Re somarela metsi..... 6
- 4 Mowa o o phepa o re naya maatla 8
- 5 Nna le batho ba bangwe 10
- 6 Batho ba ba re dikaganyeditseng 12
- 7 Go dipisa ga go tlole go batliwa 14
- 8 Rotlhe re kgethegile..... 16
- 9 Ka moo re ikutlwang ka teng .. 18
- 10 Batho ba ba nang le bogole ... 20
- 11 Bana botlhe ba kgethegile..... 22
- 12 Mogaka wa me 24
- 13 Phepafatso ya metsi 26
- 14 Mokgwa o o itekanetseng wa botshelo 28
- 15 Dikumo tse di senyegang le tse di sa senyegang..... 30
- 16 Malatsi a Sedumedi le a kgethegileng 32

Kgweditharo 2

Tsebe

- 17 Ditlha 34
- 18 Ditlha tse nne..... 36
- 19 Ka ga ditlha..... 38
- 20 Go aparela maemo a bosa 40
- 21 Ditlha di go ama jang?..... 42
- 22 Go jwala nawa 44
- 23 Diphologolo tsa polasa..... 46
- 24 Mo polaseng..... 48
- 25 Diphologolo tse di tlhaga..... 50
- 26 Diphologolo di iphitlha jang? .. 52
- 27 Diphologolo tsa metsi..... 54
- 28 Dibopiwa tsa botennye jwa metsi 55
- 29 Botaki jwa diphologolo 56
- 30 Diphologolo tse di sikarang dintlo tsa tsona 58
- 31 Diphologolo tse di ikagelang dintlo 60
- 32 Thanodi ya me 62



Mme Angie Motshekga,
Tona ya Lefapha la
Thutotheo



Ng. Reginah Mhaule,
Motlatsatona wa Lefapha
la Thutotheo

Dibukatiro tse di kwaletswa bana ba Aforikaborwa ka fa tlase ga boeteledipele jwa Tona ya Lefapha la Thutotheo. Mme Angie Motshekga le Motlatsatona wa Lefapha la Thutotheo, Ng. Reginah Mhaule.

Dibukatiro tsa Rainbow ke phitlhelelo nngwe ya Lefapha la Thutotheo e e lebisitsweng mo go tokafatseng bokgoni jwa barutwana ba Aforikaborwa ba mephato e merataro ya ntlha jaaka e le maikaeleomagolo a Lenaneotiro la Puso. Porojeke e, e etleeditswe ke Lefapha la matlotlo la Bosetshaba. Ketleetso e, e kgontshitse Lefapha go kwala le go rebola dibukatiro tse mo dipuong tsotlhe tsa semmuso kwa ntle go tuelo epe.

Re solofela gore dibukatiro tse di tlaa tswela barutabana mosola mo go ruteng ga bona ga letsatsi le letsatsi, le mo go netefatseng gore barutwana ba digela kharikhulamo ya bona. Re netefaditse gore re kaela morutabana sentle mo tirong nngwe le nngwe ka go tsenyeletsa mesupatsela go bontsha gore ke eng se morutwana a tshwanetseng go se dira.

Re solofela gore bana ba tlaa itumelela go dira mo bukeng e fa ba ntse ba gola e bile ba ithuta, le gore wena jaaka morutabana, o tlaa abelana le bona boitumelo jwa bona o tlaa e itumelela mmogo le bona.

Re go eleletsa katlego e kgolo mo tirisong ya dibukatiro tse, wena le barutwana ba gago.

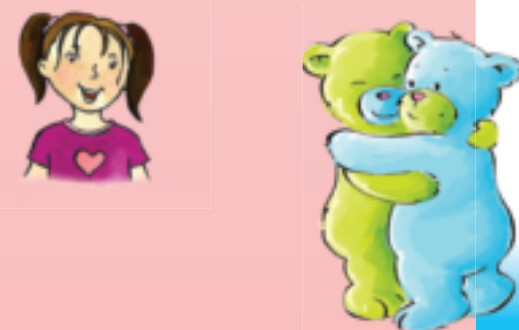
Published by the Department of Basic Education
222 Struben Street
Pretoria
South Africa

© Department of Basic Education
Fourteenth edition 2024

ISBN 978-1-4315-0259-2

This book may not be sold.

The Department of Basic Education has made every effort to trace copyright holders but if any have been inadvertently overlooked the Department will be pleased to make the necessary arrangements at the first opportunity.





Mophato

2



Dikgono tsa Botshelo
ka **Setswana**
Buka I



Buka e, ke ya ga:



Re tlhoka dijo tse di itekanetseng go tshela



A re buiseng

Mebele ya rona e tlhoka dijo tse di itekanetseng gore re kgone go gola. Re tshwanetse go ja dijo dingwe go tswa mo ditlhopheng tsa dijo letsatsi le letsatsi. Re tshwanetse go ja dijo tse di itekanetseng gore re tle re nne le maatla a a lekaneng go dira sengwe le sengwe se re tshwanetseng go se dira. Fa re sa je dijo tse di itekanetseng, re ka lwala thata.

Ditlhopha tse tlhano tsa dijo

Dithoro le dikumo
tsa dithoro

Batho ba bangwe ba ja merogo fela. Se se kaya gore ga ba je nama epe. Ba ja bogolosegolo go tswa mo ditlhopheng tse 4 tsa djo.

Merogo le
maungo

Nama,
tlhapi, nama ya
kgogo, matokomane
le dinawa

Mafura le dioli

Dikuno tsa mašwi

Letlha:



A re direng

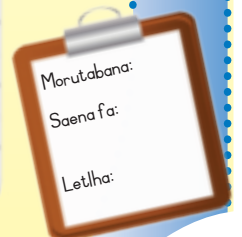
Bua le tsala ya gago gore ke dijo dife mo go tse, tse di itekanetseng. Di sekeletse.



A re kwaleng

Itire e kete o ya kwa marekisetso le mmaago go ya go reka dijo tsa maitseboa. Direla balelapa la gaeno lenaneotheko la dijo tse di itekanetseng tse di ka jewang.

LENANEOTHEKO



Morutabana:
Saena fa:
Letlha:



Metsi a re naya botshelo



A re bueng

Ke goreng re tlhoka metsi?
 Batho, dijwalo le diphologolo di
 tlhoka metsi go tshela. Metsi a
 fetisetsa dijo tse re di jang kwa
 dikarolong tse di farologaneng
 tsa mebele ya rona. Gape a thusa
 mebele ya rona go ntsha maswe.



Re dirisa metsi letsatsi le letsatsi mo magaeng a rona. Bolelela tsala
 ya gago dilo tsotlhe tse o kgonang go di akanya tse re ka di dirang ka
 metsi.



A re kwaleng

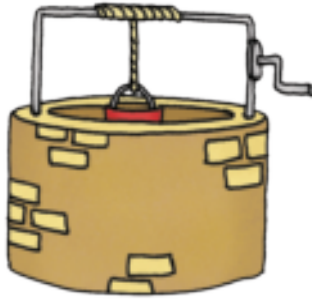
Morago o thale ditshwantsho di le 4 go bontsha gore re dirisa metsi
 jang.
 Kwala setlhogo fa godimo ga setshwantsho sengwe le sengwe go
 tlhalosa gore se bua ka ga eng.

Letlha:



A re kwaleng

Re bona metsi kae? Thala mola go golaganya lefoko lengwe le lengwe le setshwantsho se se nepagetseng.



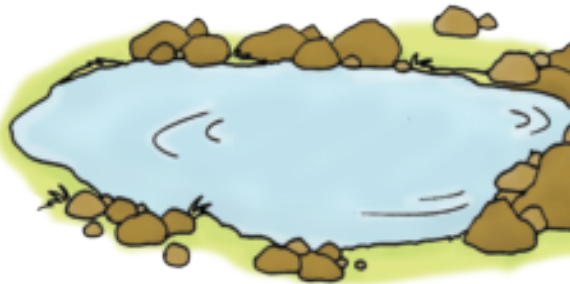
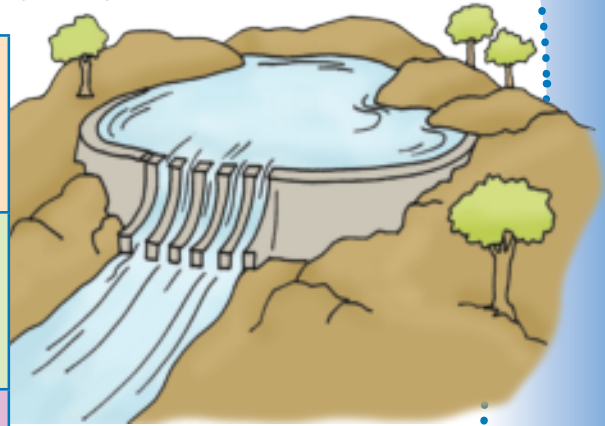
motswedi

lefetlho

noka

letamo

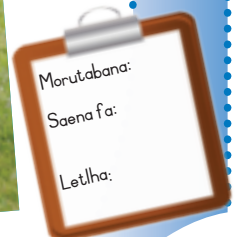
sediba sa go gelela



A re diragatseng

Pele o ka dira tirwana kwa ntle, ikotlolole jaaka katse. Seno se tlaa kgontsha mmele wa gago go tshikhinyega. Gape, o ikotlolole morago ga tirwana go repisa le go ikhutsisa mmele wa gago. Seno se tlaa go thusa gore o se nne le mesifa e e botlhoko. Jaanong dira ditirwana tse di latelang :

- Tlola jaaka segwagwa. Dira medumo ya segwagwa.
- Latlhelelanang bolo kgotsa kgetsana ya dinawa mme le e kape.
- Morago o latlhele bolo kgotsa kgetse ya dinawa kwa godimo o bo o e kape.
- Tshegetsana kgetsana ya dinawa mo tlhogong ya gago mme o taboge le tsala ya gago.
- Bona gore o kgona go rwala kgetsana sebaka se se kae e sa we.





3

Re somarela metsi

Kgweditsharo 1 – Beke 2 – Papetlanatiro



A re bueng

Metsi a botlhokwa thata, ka jalo ga re a tshwanela go a senya. Bua le ditsala tsa gago ka ga mekgwa e e farologaneng e re ka somarelang metsi ka yona.



A re kwaleng

Kwala dintlha di le pedi tsa go somarela metsi mo diphatlheng tse di fa tlase.

1. _____

2. _____



A re kwaleng

Dirisa dikherayone tsa gago go kgabisa phousetara e e buang ka ga go somarela metsi. Phousetara ya gago e rotloetse ba bangwe go somarela metsi. Morago ga go dira phousetara ya gago, e bontshe ditsala tsa gago.





A re diragatseng

A re tshamekeng motshameko
"Ke nako mang, Rre Phiri?"

Yo mongwe wa lona o tshwanetse go nna Rre Phiri.

Refosanang go botsa, "Ke nako mang, Rre Phiri?"

Nako nngwe le nngwe fa o botsa, Rre Phiri o tshwanetse go bua gore ke nako mang.

Fa Rre Phiri a re, "Ke nako ya dijotshegare", o tlaa simolola go go lelekisa. Wena o tshwanetse go tshaba pele a go tshwara.



Jaanong batla hupu mme o tshameke ka yona.

Wena le tsala ya gago le tshwanetse go refosanela go sutlha mo hupung. La ntlha o tsamaya ka maoto mme morago ka matsogo a gago. Latela ditaelo tsa morutabana mme o dire se ka pabalesego.

Morago o emise hupu gore tsala ya gago e gagabe mo go yona. Refosanang go dira se.



La bofelo,
Ka ditlhopha tsa 4,
ikatiseng le bo le
diragatsa mmimo wa
Seaforikaborwa.

Morutabana:
Saena fa:
Letlha:



Mowa o o phepa o re naya maatla



A re buiseng

Mowa o re o hemang o na le okosijene. E thusa mebele ya rona go dirisa dijo tse re di jang. Morago re bona maatla a go tshela. Fa re hema mowa o o leswe, mebele ya rona ga e kgone go dira sentle.



A re kwaleng

Dira le tsala ya gago mme le tlatse diphatlha tse di latelang.

Ke tlhoka mowa o o phepa gonne _____

Fa mowa o le leswe _____

Mowa o nna leswe fa _____

Se re ka se dirang go tshola mowa o le phepa:

1. _____

2. _____



A re buiseng

Batho ba tlhoka marang a letsatsi go itumela le go nna ba itekanetse. A thusa mebele ya rona go bona vithamini D. Re tlhoka se go bopa marapo a a maatlafetseng. Marang a letsatsi ka bontsi ga a re siamela. Letlalo la rona le ka ša botlhoko. O tshwanetse go dirisa setlolo sa go thibela letsatsi kgotsa hutshe ya letsatsi go sireletsa letlalo la gago kgatlhanong le letsatsi.



A re kweleng

Tlatsa diphatlha tse di fa tlase:

Nka kgona go bolokesega kgatlhanong le marang a letsatsi fa ke:

1. _____
2. _____
3. _____



A re opeleng

Opela pina e, e o bo o opela moribo diatla.



O tshwanetse go dirisa setlolo sa go thibela letsatsi kgotsa hutshe ya letsatsi go sireletsa letlalo la gago kgatlhanong le letsatsi.



O lesedi la me

Lesedi la me

O a intumedisa

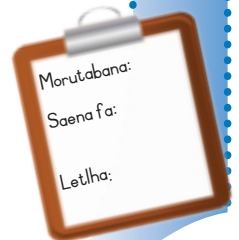
Fa loapi lo le letala.

Ga o ka ke wa itse, moratiwa,

Gore ke go rata jang.

Tsweetswee, lo se ka lwa ntseela

lesedi la me.



Morutabana:
Saena fa:
Letlha:



5

Nna le batho ba bangwe

Kgweditharo 1 – Beke 3 – Papetlanatiro



A re bueng

Rotlhe re rata go nna le ditsala tse di siameng. O itse jang gore motho mongwe ke tsala e e siameng?



A re kwaleng

Mo di phatlheng tse di fa tlase, kwala lenaneo la dilo tse di dirang motho tsala e e siameng.



1. _____
2. _____
3. _____
4. _____



A re kwaleng

Akanya ka ga dipotso tse mme morago o kwale dikarabo tsa gago.

O na le ditsala di le kae?
Leina la tsala nngwe ya gago ya botlhokwa ke mang?
Le nnile ditsala sebaka se se kae?
Ke eng se se kgethegileng ka ga tsala e ya gago?



A re bueng

Nna le tsala ya gago mme le bue ka ga ditlhagiso tse. Tshwaya (✓) mo lebokosong fa di bua nnete, mme o tshwaye (✗) fa di sa bue nnete.

Lenaanetekolo la botsalano

Tsenya ✓ kgotsa ✗

Tsala ya me e a nkgathalela.	
Tsala ya me e a nthusa.	
Tsala ya me e arogana dilo le nna.	
Tsala ya me ga e lwe le nna.	



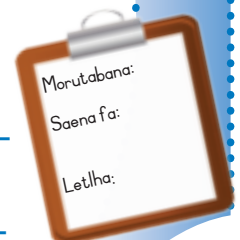
A re kwaleng

Akanya ka sengwe se se ka dirang gore tsala ya gago e ikutlwe e kgethegile, mme morago o se thale mo lebokosong le le neilweng fa thoko. Gakologelwa go ntlafatsa foreimi ya setshwantsho. Fa o sena go dira se, bua ka ga mebala e e didimetseng le e e tlhodiang e o e dirisitseng mo setshwantshong sa gago.



A re kwaleng

Kwala dipolelo di le 2 ka ga setshwantsho sa gago.

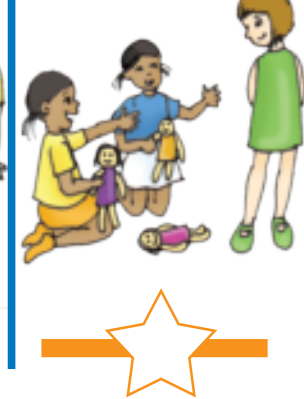
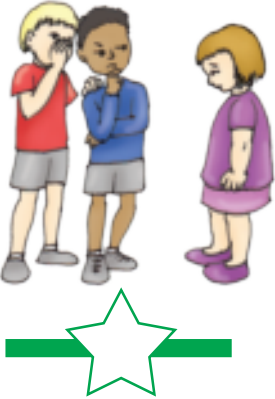


Batho ba ba re dikaganyeditseng



A re bueng

Lebelele ditshwantsho. Akanyang ka ga gore ditsala tse di siameng di dira eng, mme le bue ka ga tsala e e siameng mo setlhopheng sa lona. Jaanong akanya ka ga gore ditsala tse di sa siamang di dira eng. Tshwaya (✓) mo setshwantshong sengwe le sengwe go bontsha botsalano jo bo siameng, mme o tshwaye (✗) go bontsha botsala jo bo sa siamang.





A re buiseng

Buisa nngwe le nngwe ya dipolelo mme morago o khalare sefatlhego sa "Ee" 😊 kgotsa sa "Nnyaya" ☹️.



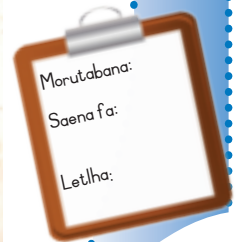
Ke tsala e e siameng.		
 Ke kgathalela ditsala tsa me.		
Ke rata barutwana-ka-nna.		
Barutwana-ka-nna ba a nthata.		
 Ke bonolo mo bathong ba ke tshelang le bona.		



A re ikatiseng

A re tshamekeng "Ema mo moriting wa me".

Wena le ditsala tsa gago le tshwanetse go gata mo godimo ga moriti wa yo mongwe le yo mongwe. Refosanang go bona gore le kgona go gata meriti e le mekae. O ka nna wa tswelala go tsamaya gore tsala ya gago e se ka ya kgona go gata moriti wa gago.



Morutabana:
Saena fa:
Letlha:





7

Kgweditharo I – Beke 4 – Papetlanatiro

Go dipisa ga go sa tthole go batliwa



A re kwaleng

Lebelela sengwe le sengwe sa ditshwantsho tse di latelang.

O ne o ka dira eng fa o ne o le ngwana yo o dipisiwang?

Kwala polelo e le nngwe gaufi le setshwantsho sengwe le sengwe ka moo re tshwanetseng go tsholana ka teng.







Letlha:





A re diragatseng

Diragatsa le tsala ya gago ka ga ngwana yo o dipisang ngwana yo mongwe. Morago o bue gore re ka dira eng go thibela go dipisa.

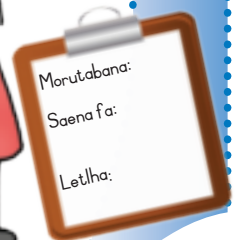
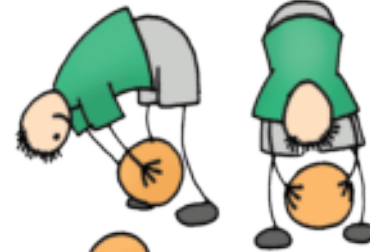


A re ikatiseng

Ithulaganyeng ka ditlhophha tsa 5.

Morago lo dire mola mme le neeletsane bolo le ntse le le mo moleng. Bonang gore ke setlhophha sefe se se kgonang go neeletsana bolo mo nakong e khutshwanyana. Morago ga go dira jalo, le kang go latlhelelana bolo ka mekgwa e e farologaneng.

- Fetisa bolo mo magareng ga maoto o e fetisetse kwa morutwaneng yo o kwa morago ga gago.
- Fetisa bolo kwa godimo ga tlhogo ya gago o e fetisetse kwa morutwaneng yo o kwa morago ga gago.
- Fetisetsa bolo kwa molemeng wa gago o e fetisetse kwa morutwaneng yo o kwa morago ga gago.
- Fetisetsa bolo kwa mojang wa gago o e fetisetse kwa morutwaneng yo o kwa morago ga gago.
- Jaanong latlhelelanang bolo mme le bone gore le ka e kapa ga kae.



8

Rotlhe re kgethegile



A re bueng

Lebelela ditshwantsho mme o bue ka moo bana ba ba tshwanang ka teng. Bua ka moo ba farologanang ka teng.





A re buiseng

Dirang tiro e e latelang ka ditlhophha. Lebelela bana ba bangwe botlhe mo Phaposiborutelong ya gago. Morago o buise nngwe le nngwe ya dipolelo tse di latelang. Fa polelo e nepagetse, tshwaya (✓) mo lebokosong le le ka fa mojang mme fa polelo o tshwaye (✗), fa e fosagetse.

Tsenya ✓ kgotsa ✗

A basimane le basetsana ba a tshwana?	
A mongwe le mongwe o na le moriri wa mmala o o tshwanang?	
A mongwe le mongwe o na le matlho a mmala o o tshwanang?	
A mongwe le mongwe o na le diatla tsa selekano se se tshwanang?	
A barutwana botlhe ba boleele jo bo lekanang?	



A re bueng

A o kgona go lemoga gore re a farologana rotlhe? A o kgona go lemoga gore re a tshwana rotlhe? Buang ka ga mekgwa e re tshwanang ka yona.

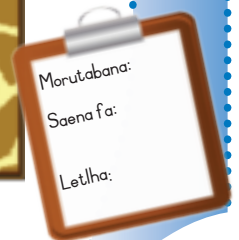


A re kwaleng

Thala setshwantsho sa gago. Morago o dirise setshasamolomo go dira motlhala wa monwana o o itlhaotseng fa thoko ga foreimi ya setshwantsho.



A o ne o itse gore ga go ope mo lefatsheng yo o nang le setshwano sa meralo ya menwana? O itlhaotse e bile o kgethegile.



9

Ka moo re ikutlwang ka teng



A re bueng

Buang ka moo lo ikutlwang ka teng fa lo diragalelwa ke sengwe se se siameng le se se sa siamang re bitsa se , maikutlo. Tlatsa gore ba ikutlwa jang.











A re kwaleng

Kwala dikarabo tsa dipotso tse di fa tlase.

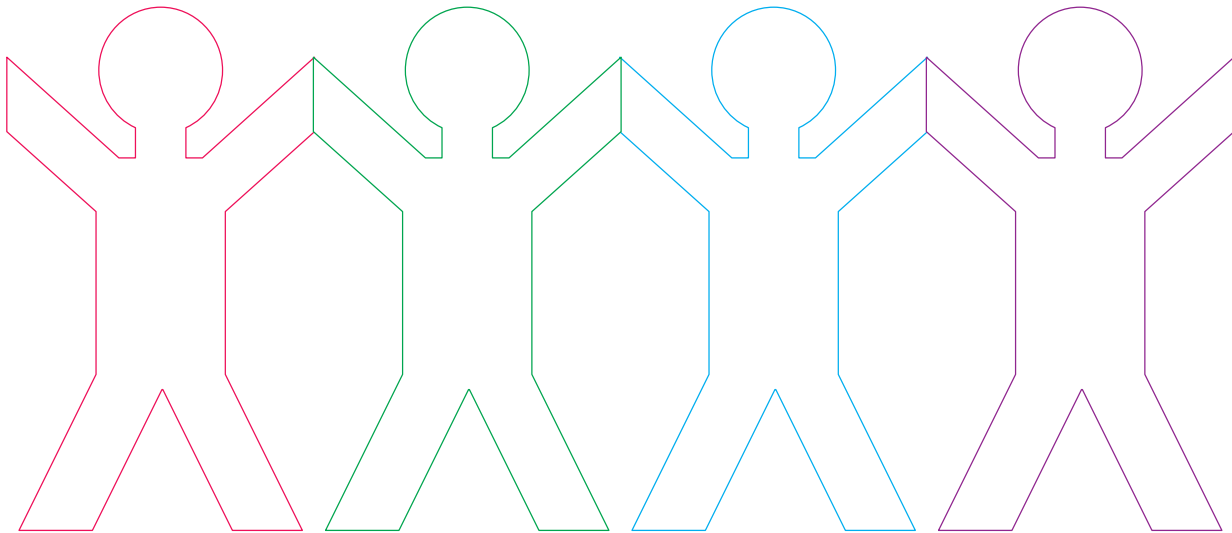
Ke eng se se go itumedisang?
Ke eng se se dirang gore o nne o utlwile botlhoko?
Ke eng se se go boifisang?
Ke eng se se go tenang?

Letlha:



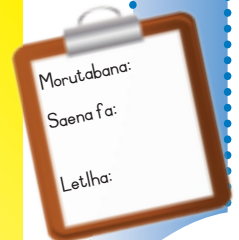
A re kwaleng

Thala o bo o khalara ketane e ya botsalano. Leka go dira gore mpopo mongwe le mongwe o farologane, go bontsha gore rotlhe re a farologana e bile re itlhaotse. Fa o sena go dira se o ka nna wa sega ketane ya botsalano go tswa mo tsebeng ya mesego mo bogareng jwa buka e, dira gore mpopo mongwe le mongwe o farologane mme e emise mo tafoleng ya gago go go gakolola gore rotlhe re a farologana.



A re ikatiseng

Dira mmele wa gago mogolo ka moo o ka kgonang.
 Morago leka go dira mmele wa gago monnye ka moo o ka kgonang.
 Jaanong leka go o dira moleele ka moo o ka kgonang.
 La bofelo, leka go o dira mokhutshwane ka moo o ka kgonang.



Batho ba ba nang le bogole



A re bueng

Lebelela ditshwantsho tse di latelang

- O bona mofuta efe e e farologaneng ya bogole?
- Mongwe le mongwe wa bana ba o dirisa eng go ithusa?
- Ke mathata a mofuta mang a o akanyang gore bana ba ba na le ona mo matshelong a bona a letsatsi le letsatsi?
- Buang gore re ka ba thusa jang.

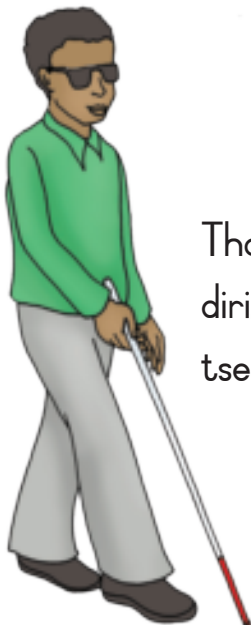


A re kweleng

Lebelela ditshwantsho tse di fa tlase.
Feleletsa dipolelo.

Rosemary ke segole .

O dirisa _____ go
tsamaya.



Thabo ke sefofu
dirisa _____ go bona
tsela ya gagwe.

ntšwakaedi



setuloteti





sethusakutlo



Pule ke susu.

O dirisa _____
go mo thusa go utlwa.



Puo ya Ditshupetso



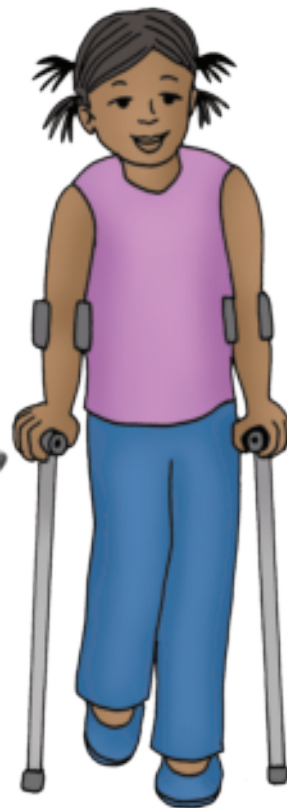
Jabu ke semumu.

O dirisa _____
go bua le batho.



dithobane

Nomsa o dirisa _____ go
mo thusa go tsamaya.



A re direng

Dirisa mmopa kgotsa tege ya go
tshameka go bopa kopi kgotsa nkgo ya
lebolomo.



Bana botlhe ba kgethegile



A re bueng

Bana ba, ba farologana jang le wena?
Ba tshwana jang?



A re buiseng

Batho lefatshe ka bophara ba keteka meletlo ya malatsi a boikhutso a a kgethegileng.



Rotlhe re rata go tshameka le go opela.

Rotlhe re tlhoka dijo go ja.

Rotlhe re tshwanetse go ya sekolong.

Fa re lwala, rotlhe re tshwanetse go ya ngakeng.

Rotlhe re tshwanetse go nna phepa.

Ga re patelesege go dira.

Rotlhe re bana.



A re kwaleng

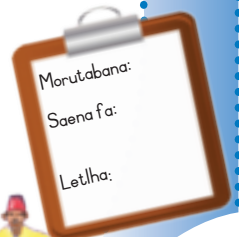
Botsa ditsala di le 3 dipotso tse. Tlatsa dikarabo tsa bona mo diphatlheng tse di fa tlase.

Tlatsa leina la tsala ya gago.			
Tumelo ya gago ke efe?			
Ke meletlo efe e e kgethegileng e le nang le yona?			
O ja eng?			
O apara diaparo dife tse di kgethegileng?			
O keteka meletlo jang?			



A re kwaleng

Lebelela setshwantsho. Ke mmepe wa lefatshe la rona. O kgona go bona gore lefatshe la rona le na le lefatshe le lewatle. Khalara lefatshe ka borokwa. Thala ditlhapi di le mmalwa mo lewatleng.



Mogaka wa me



A re bueng

Bua ka gore a go na le bana ba ba bogole mo sekolong sa lona.

Sekolo se ka dira eng go ba thusa fa ba le kwa sekolong?

A batho ba ba bogole ba ka nna bagaka?



A re buiseng

Bagaka bangwe ba na le bogole. Ke dikgantshwane tse re ka di salang morago. Mo Aforikaborwa go na le bagaka ba metshameko ba ba tshelang ka bogole. A o itse batho ba bangwe ba ba bogole ba e leng bagaka mo metshamekong?

Natalie du Toit o latlhegetswe ke karolo e e kwa tlase ya leoto la gagwe mo kotsing ya sethuuthuu. O tsamaya ka leoto la maitirelo mme o thuma ka leoto le le lengwe.



A re bueng

Bua ka ga batho ba ba nang le bogole ba ba dirang dilo tse di gakgamatsang.

Akanya ka ga:

- Difofu di tshameka diletswa tsa mmino. A o itse sengwe fela?
- Disusu di kwala dipina. A o ka akanya ka sekao?





A re kwaleng

Mo diphatlheng tse di fa tlase, naya dintlha ka ga mogaka kgotsa sekgantshwane sa gago.

Mogaka kgotsa sekgantshwane sa me ke:

Thala setshwantsho sa mogaka kgotsa sekgantshwane sa gago. Kwala mafoko a a se tlhalosang fa thoko ga setshwantsho sa gago. Dikao: o botsalano , Ke segatlhamelamasisi, o lorato, o a thusana.

O ka nna mogaka jang? Tlotlang ka ga dikakanyo wena le tsala ya gago. Jaanong kwala kang eo mo go yona o nnang mogaka. Tlatsa fa tlase:

Letsatsi lengwe ke

Ka swetsa go

Ke

Ke ka fao ke nnileng mogaka.



Phepafatso ya metsi



A re buiseng

Lebelela galase ya metsi.

A o kgona go bona sengwe mo go yona?
Nnyaya, o ka se kgone. Mme a o ne o itse gore nako nngwe go na le megare mo metsing? Megare e , e mennye mme ga e bonwe ka matlho. Fa o ka nwa metsi ntle le go bolaya megare, o ka nna wa lwala thata. Gantsi re batla go netefatsa gore metsi a re a a nwang a phepa.



A re bueng

Buang ka ga gore go ka diragala eng fa re ka nwa metsi a a leswe. Jaanong lebelelang ditshwantsho tse di fa tlase. Bua le tsala ya gago ka ga mekgwa e e farologaneng ya go phepafatsa metsi.



Tshela dipilisi tsa tlelorine mo metsing.



Bedisa metsi sebaka sa metsotso e le 5.



Tshela dikhemikhale.



Sefa metsi.





A re bueng

Ke metsi afe a o akanyang gore a bolokesebile go ka nowa? Khalara marothodi a metsi ka mmala o o botala jwa legodimo fa o akanya gore go bolokesebile go a nwa.

Metsi a noka



Metsi a mosima o o ikepetsweng



Metsi a thepe



Metsi a a rekilweng a a mo lebotlolong



Metsi a lewatle



Metsi a a bedisitsweng mo ketleleng



A re direng

Dirang ka ditlhopha mme le dire sefo ya metsi go phepafatsa metsi. Reetsang ka tlhoafalo fa morutabana wa lona a le tlhalosetsa gore le tshwanetse go dira eng.



O tlaa tlhoka tse di latelang:

Lebotlolo la dilitara di le 2

Motlhaba o mosesane

Motlhaba o o matlapana

Matlapa a mannye

Sekere

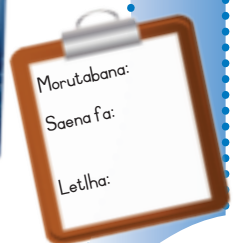
Letseta



A re kwaleng

Dirisa dinomoro go tlhomaganya dikgato tsa go dira sefo ya metsi ka tatelano e e siameng.

	Tshela motlhaba o mosesane mo godimo ga letseta.
	Kgonamisa lebotlolo
	Tshela motlhaba o o matlapana
	Ka kelotlhoko sega marago a lebotlolo la polasetiki.
	Tshela metsi a a diretse mo go yona
	Latlhela matlapa a mannye mo lebotlolong



Mokgwa o o itekanetseng wa botshelo



A re buiseng

Buisa ka ga mongwe le mongwe wa mekgwa e e sa siamang le e e siameng. Fa o akanya gore ke mokgwa o o siameng, tshwaya (✓), mme fa o akanya gore ke mokgwa o o sa siamang, tshwaya (✗).

Mekgwa Morutabana o thusa barutwana go buisa.	E e siameng ✓	E e sa siamang ✗
Ke ja dijo tse di itekanetseng.		
Ke latlha matlakala ka letlhabaphefo la koloi kgotsa thekesi.		
Ke tlhapa moriri ka dinako tsotlhe.		
Ke ja dimonamone tse dintsi.		
Ke tshola dinala le ditsebe tsa me di le phepa.		
Ke tlhapa meno a me gangwe ka kgwedi.		
Ke sela matlakala mme ke a latlhele mo kgamelong ya matlakala.		
Ke tlhapa matsogo a me morago ga go ya kwa ntlwanaboithusetsong.		
Fa ke gotlhola kgotsa ke ethimola, ke itshwara molomo ka seatla.		
Ke ikatisa gangwe le gape.		
Ke tlhapa diatla tsa me pele ke ja.		
Ke dula fa pele ga TV diura tse dintsi.		
Ke dula le bagolo ba ba tsubang.		



A re kwaleng



Dira phousetara ka ga mokgwa o o siameng kgotsa mokgwa o o sa siamang.



A re kwaleng

Tlhatlhoba phousetara ya gago. Buisa polelo nngwe le nngwe, mme morago o tsenye sefatlhego se se nyebang fa polelo e le nnete, le sefatlhego se se tlhontseng fa polelo e se nnete.



	Ee 	Nnyaya 
Phousetara ya me e ntle e bile e phepa.		
Ke itumeletse go dira phousetara ya me.		
Go ne go le thata go dira phousetara ya me.		



A re ikatiseng

- O kgona go tlolela bokgakala jo bo kae? Dirisa dikarolo tse tharo tsa mogala. Di tlole. Tswelela go di kgaoganya go bona gore o ka tlolela bokgakala jo bo kae?
- Morago, kopa ditsala tsa gago tse pedi go dikolosa kgati gore o kgone go tlola.
- Refosanang go tlola kgati.



Morutabana:
 Saena fa:
 Letlha:

Dikuno tse di senyegang le tse di sa senyegang

A re bueng



Buang ka ga dijo tse di batlang go tsholwa di tsidifetse gore di se ka tsa senyega. Swetsang gore ke dijo dife tse di sa batlang go tsholwa di tsidifetse, mme di batla go tsengwa mo rakeng. Segang ditshwantsho go tswa mo tsebeng ya tse di segiwang mme le di kgomaretse mo setsidifatsing kgotsa mo rakeng.





A re bueng

Buang ka ga mekgwa e re ka sireletsang dijo kgatlhanong le ditshenekegi di tshwana le dintsi le ditshoswane.



Morutabana:
Saena fa:
Letlha:

Malatsi a Sedumedi le a a kgethegileng



A re buiseng

Batho mo lefatsheng lotlhe ba keteka malatsi a boikhutso a a kgethegileng. Ke malatsi a boikhutso a afe a o a ketekang?



Ka nako ya malatsi a botsalo jwa Morena re amogela dimpho. Gape re fa ditsala tsa rona le ba malapa a rona dimpho. Re na le setlhare sa Keresemose mo ntlong ya rona. Re baya dimpho ka fa tlase ga setlhare se. Re kgabisa setlhare mme re beye naleli kwa godimo. Ka nako ya Keresemose re nna mmogo le balelapa.



Re fela pelo gore Diwali e tla leng. E ke nako e re fiwang dimonamone le dimpho tse dintsi. Re paka dimonamone le dikuku tse di monate mo mabokosong mme re di neye batho ba ba re etelang. Re tshuba mabone a mannye mme re kgabise ka ona.



Re fela pelo gore Hanuka e tla leng. Re ya go ja dijo tse dintsi. Re rata go ja dipanekuku le didonatse. Gape re rata go amogela dimpho. Bontsalaarona ba a re etela. Rotlhe re thusa ka go dira dijo mme re tshuba dikerese mo ntlong ya rona.

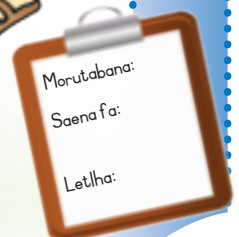


Gautshwane e tlaa bo e le Eidi. Ke solofela gore re tlaa amogela dimpho tse dintle. Re tla fa le ditsala tsa rona dimpho. Re tlaa bo re ja dikuku le dimonamone tse dintsi. Re lemoga nako ya Eidi ka sebopego sa ngwedi. Eidi e nna ka matlha a a farologaneng ngwaga le ngwaga.



A re bueng

Opela pina e o e itseng ya lengwe la malatsi a a kgethegileng a.



Morutabana:
Saena fa:
Letlha:

Ditlha



A re bueng

Lebelela ditshwantsho tsa ditlha tse nne. Bolelela tsala ya gago gore o bona eng mo setshwantshong sengwe le sengwe. Bua gore ditlha tse nne tse di farologana jang.



O rata setlha sefe thata? _____

Ke goreng o rata setlha se thata? _____

Letsatsi la gago la matsalo le wela mo setlheng sefe? _____



A re bueng

Dumela, Rre Letsatsi!
Letsatsi la gago le sa tswa go tllhaba.
Ke batla go bona sefathhego
se se phatsimang.
Dumela, Rre Letsatsi.



Pula, pula tsamaya!
Bana ba bannye ba
batla go tshameka.
Tlaya gape ka letsatsi le lengwe.
Tsamaya letsatsi le le lengwe fela.



Morutabana:
Saenafa:
Letlha:



18

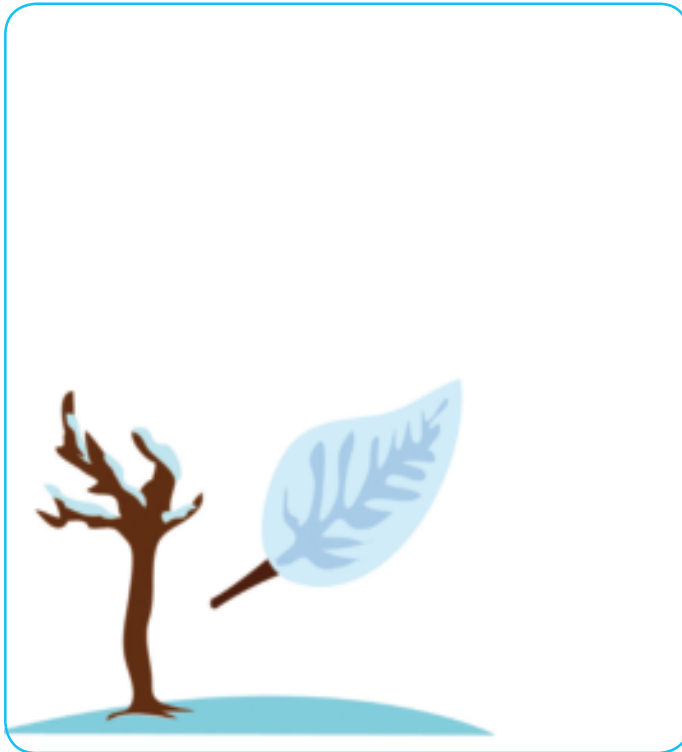
Kgweditharo 2 – Beke I – Papetlanatiro

Ditlha tse nne



A re direng

Sega ditshwantsho tsa ditlha go tswa mo go tsebe ya tse-di-segetsweng ruri e e kwa morago ga buka. Kgomaretsa setshwantsho sengwe le sengwe fa thoko ga leina la setlha se se nepagetseng.



Seetebosigo

Phukwi

Phatwe

mariga

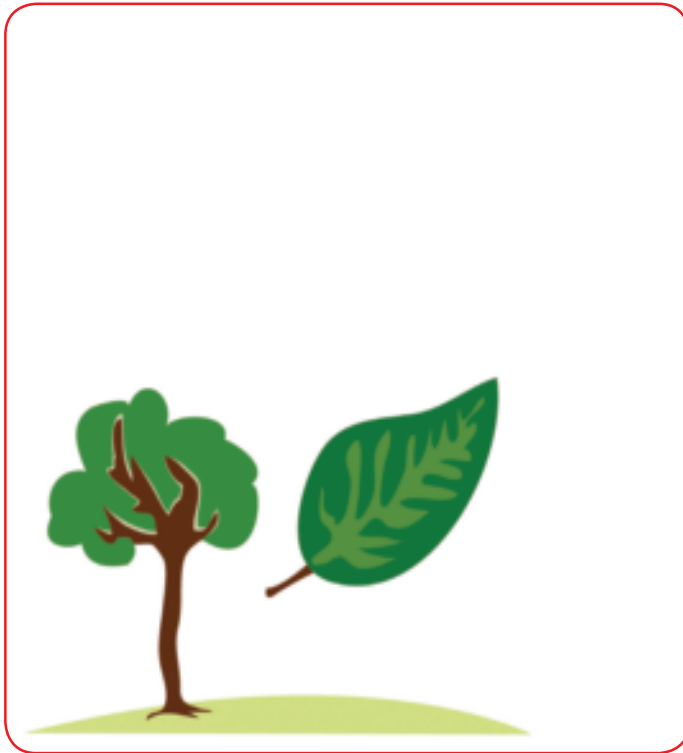
Lwetse

Diphalane

Ngwanaitseele

dikgakologo





Sedimonthole

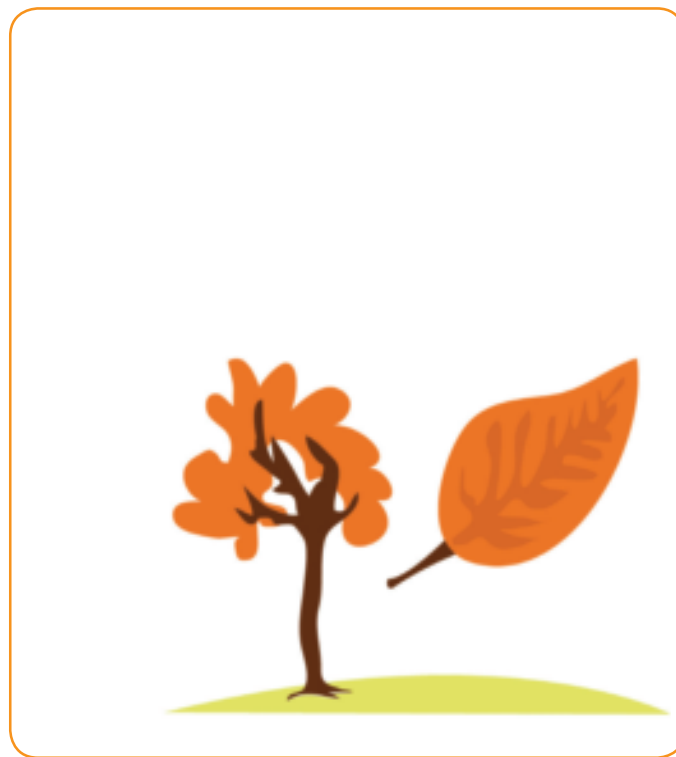
Ferikgong

Tlhakole

selemo

Mopitlwe
Moranang
Motsheganong

lethabula



A re diragatseng

Ikatise bokgoni jwa gago jwa bolo.
Tampisa bolo mo leboteng.
Tswelela go gata fa o emeng fa o ntse o latlhela bolo.
Jaanong taboga o ntse o tampisa bolo go dikologa dikhouno.



Morutabana:
Saenafa:
Letlha:





19

Ka ga ditlha

Kgweitharo 2 – Beke 2 – Papetlanatiro



A re buiseng



Selemo

Maemo a bosa a bothitho e bile go letsatsi.
Motshegare o moleele mme bosigo bo bokhutshwane.
Re kgona go itsidifatsa ka go thuma kgotsa ka go nna mo meriting.

Lethabula

Maemo a bosa a a tsidifala.
Matlhare a simolola go swaba le go wela fa fatshe.
Dinonyane di fudugela kwa mafelong a a bothithwana.



Mariga

Maemo a bosa a tsididi.
Mo mafelong a mangwe go na le segagane kgotsa semathane.
Motshegare o mokhutshwane mme bosigo bo boleele.
Diphologolo dingwe di robala mariga otlhe (di iphitlha ka fa tlase ga mmu).

Dikgakologo

Maemo a bosa a bothitho.
Dijwalo di simolola go tlhoga mme go mela ditšhese le dikuno mo ditlhareng.
Dinonyane di simolola go aga dintlhaga le go beela mae.





A re bueng

Dijo tse di farologaneng di mela mo ditlheng tse di farologaneng. Lebelela dijo tse tsa selemo le tsa mariga. Bolelela tsala ya gago gore o rata go ja eng fa go le mogote le fa go le tsididi.



Dijo tsa setlha sengwe le sengwe



Morutabana:
 Saena fa:
 Letlha:

Go aparela maemo a bosa



A re kwaleng

Thala setshwantsho sa mosimane le mosetsana.
Mosimane o tshwanetse go aparela diaparo tse di bothitho tsa mariga mme mosetsana o tshwanetse go aparela diaparo tse di marutshwana tsa selemo.

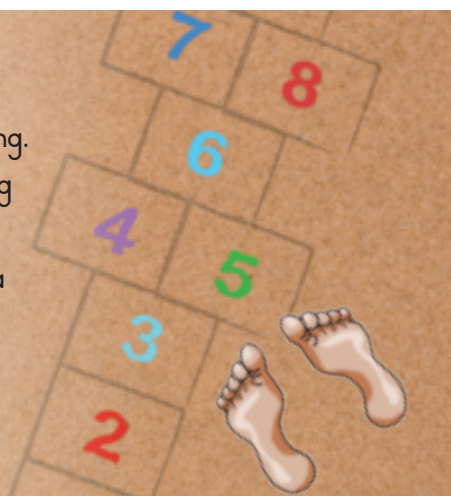


Mosimane	Mosetsanana



A re diragatseng

- Baya dihupu fa fatshe kgotsa thala didiko mo motlhabeng.
- Fa morutabana wa gago a re o tlole, o tlolele mo sedikong ka maoto a mabedi.
- Fa morutabana wa gago a re o tlole, o tlolele kwa ntle ga sediko ka leoto le le lengwe.
- Tshameka sekotšhe.
- Dirisa tšhoko go thala didiko le dikwere fa fatshe.





A re bueng

Bolelela tsala ya gago gore re apara diaparo tsa mofuta ofe mo setlheng sengwe le sengwe. Ke diaparo dife tse o ratang go di apara?



A re kwaleng

Thala mola go tswa mo tlhalosong ya diaparo tse re di aparang mo maemong a bosa, go ya kwa setshwantshong sa diaparo.

Go aparela maemo a bosa.

Fa go le letsatsi re tshwanetse go rwala dihutshe go itshireletsa kgatlhanong le letsatsi.



Fa go le bothitho re tshwanetse go apara diaparo tse di marutshwana.



Fa go le tsididi kwa ntle re tshwanetse go apara diaparo tsa wulu.



Fa pula e na re tlhoka jase ya pula le mokgele.



Ditlha di go ama jang?



A re buiseng



Dikgakologo

Ka dikgakologo ditlhare di
simolola go ungwa.

Re bona dinonyane tse
dintsinyana, dinotshe, ditšhese le
matlhare a mantšhwa.

Dinonyane di aga dintlhaga
e bile di beela mae.

Borapolasa ba beola dinku.



Selemo

Ka selemo borapolasa ba kgetla
maungo. Bana ba diphologolo ba
simolola go nna matlhagatlhaga.

Mo mafelong a mantsi pula ya
matlakadibe le dikgadima e na
thata.

Tlhaga, dikhi le ditšhese di nna
dikima e bile ditlhare di nna
dileele.





Letlhabula

Diphologolo dingwe di baya dijo tsa tsona fa di ipaakanyetsa mariga. Matlhare a ditlhare a simolola go nna serolwana, borokwa, khibidu le mmala wa namune. Tlhaga e simolola go nna tshetlha.



Mariga

Diphologolo dingwe di robala mariga otlhe. Tse dingwe di iphitlha ka fa tlase ga mmu. Di nna bothitho gone matlalo a tsona a nna makima.



A re kwaleng

Diphologolo dingwe di dira eng mariga otlhe? _____

Diphologolo tse dingwe di itshireletsa jang kgatlhanong le serame? _____

Dinonyane di boela leng kwa mafatsheng a a bothithwana mme di simolole go aga dintlhaga leng? _____



Go jwala nawa



A re direng

O tlhoka

- Dinawa di le 5
- Porinki
- Letseta
- Metsi



O tshwanetse go dira eng?

Baya dinawa mo letseteng mo porinking.





Di tshole di le metsi. Baya porinki mo pankeng ya letlhabaphefo mo leseding la letsatsi.

Lebelela dinawa sebaka sa dibeke tse pedi. Bona gore di tlhoga jang.



Lebelela setshwantsho sa sejwalo se sa nawa.

Fa sejwalo sa gago se ntse jaana, o tlatse letlha.

Letlha	Letlha	Letlha	Letlha
			

Letlha:



A re diragatseng

Dira motshameko ka ga phologolo.

O ka bontsha bera kgotsa ramoshe a kgobokanya le go boloka dijo go direla mariga.



A re diragatseng

Relela fa fatshe jaaka noga e batla lefelo le le siameng la go iphitlha.



Fofa jaaka peolwane e ya kwa lefelong le le bothithwana.



Morutabana:
Saena fa:
Letlha:





23

Diphologolo tsa polasa

Kgweditharo 2 – Beke 4 – Papetlanatiro



A re bueng

Lebelela setshwantsho mme o bue ka ga diphologolo tse di farologaneng tsa polasa tse o di bonang. Ke phologolo efe e o e ratang? Phologolo nngwe le nngwe ya tse, e re thusa ka eng?





A re kwaleng

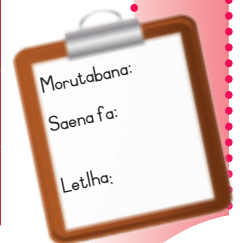
Tlatsa dikarabo tse di nepagetseng mo meralong e.
Re go diretse ya ntlha.

	Monna	Phelefu
	Mosadi	Nku
	Lesea	Konyana
	Modumo	Mmee!
	Ntlo	Lesaka

	Monna	
	Mosadi	
	Lesea	
	Modumo	
	Ntlo	

	Monna	
	Mosadi	
	Lesea	
	Modumo	
	Ntlo	

	Monna	
	Mosadi	
	Lesea	
	Modumo	
	Ntlo	



Mo polaseng



A re bueng

Pidipidi kwaa, kwaa!

Ga e na meno kwaa, kwaa!

E phela ka motogo kwaa, kwaa!

Pidipidi kwaa, kwaa!

Ga e na meno kwaa, kwaa!

E phela ka motogo kwaa,
kwaa!





A re bueng

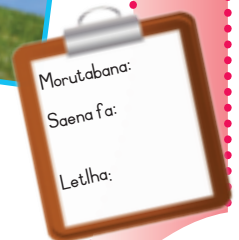
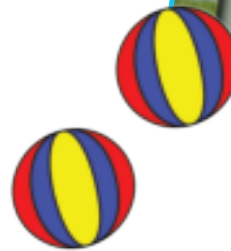
Tswelela ka go opela pina. Dirisa diphologolo tse di latelang mme bue ka tsona jaaka go ne go dirwa ka pidipidi.

		Mme mo polaseng o ne a na le dintšwa.
		Mme mo polaseng o ne a na le dikgogo.
		Mme mo polaseng o ne a na le dipitse.



A re ikatiseng

- Tsamaya mo godimo ga kota ntle le go wa.
- Latlhela bolo mo moweng mme o e kape le go wa.
- Morago o kwakwante jaaka pitse.
- Khukhutha jaaka pidipidi.
- Tsamaya jaaka setshamekisi sa roboto.



Morutabana:
 Saena fa:
 Letlha:





25

Diphologolo tse di tlhaga

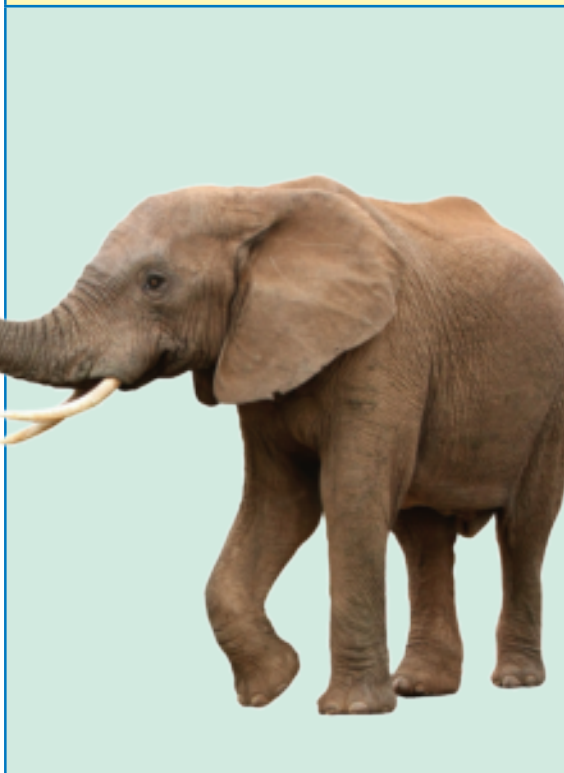
Kgweitharo 2 – Beke 5 – Papetlanatiro



A re buiseng



Ditau ke losika loo katse. Tau e bonwa jaaka kgosi ya diphologolo. Di tsoma le go bolaya diphologolo di tshwana le diphoti le dipitse tse ditilodi. Ditau tsa tshadi ke tsona thata di tsomang. Di tsoma bosigo ka digopa kana ditlhopha. Ditau di rata go tshela mo masimong a a bulegileng a tlhaga. Ditau di kgona go rorela kwa godimo thata.



Ditlou ke diamusi tse dikgolo thata mo lefatsheng. Di aga di le mo kotsing gonne magodu a diphologolo a di tsomela manaka a tsona. Ditlou di gola botshelo jwa tsona jotlhe. Ditlou di dirisa ditlopo tsa tsona go tsenya medi, maungo le metsi mo molomong. Di ja go fitlha dikilogeramo di le 200 tsa dijo ka letsatsi gape di nwa dilitara tsa metsi di le 190.



Goa na le mefuta e mebedi ya ditshukudu – e leng, tshukudu e ntsho le tshukudu e tshweu. Ditshukudu ga di bone sentle, mme di na le serwekutlo se se maatla sa go nkgelela. Ditshukudu di dikgolo mme di bega dikilogeramo di ka nna 2 500. Gantsi magodu a tsoamela ditshukudu manaka a tsona. Re tshwanetse go sireletsa ditshukudu kgatlhanong le babolai ba ba di bolaelang manaka a tsona.



Lengau le le godileng le kgona go gola boleele jwa dimmitara di le 2. Letlalo la lona le bosetlhanyana ka maronthorontho a mantsho a a tshokeletsa. Lengau le kgona go palama ditlhare e bile ga le na mathata a go tsoma mo ditlhareng.



Dinare di tshela ka ditlhopha. Fa go le kotsi, dinare tsa ditshegadi le mabotlana a tsona di tsema mo gare ga motlhape mme di dikaganyediwa ke dipoo go di sireletsa. Dinare dingwe di kgona go golela kwa godimo go fitlha dimmitara di le 1,7.



Morutabana:
Saena fa:
Letlha:



Diphologolo di iphitlha jang?



A re buiseng



Methaladi ya dipitse tse ditilodi e dira gore go nne thata go di bona mo sekgweng.

Diphologolo dingwe di itshireletsa ka go fetola mokgwa oo di lebegang ka ona go tsamaelana le tikologo e di leng mo go yona.

Maobu a kgona go fetola mmala go tsamaelana le ditlhare tse a di palamang.

Matlalo kgotsa mafofa a dinonyane tse dingwe a fetolwa ka mokgwa o go nnang bothata go di lemoga le go di bona.

Se re se bitsa maano a ipabalelo,

A o ke o akanye ka ga diphologolo tse di dirisang maano a ipabalelo.



Boithabiso

Morutabana wa gago o tlaa go bontsha ka moo o tshwanetseng go tshameka mmimo wa ditulo ka teng.





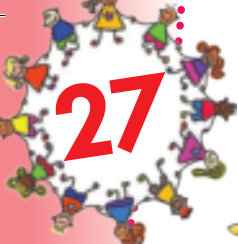
A re direng

Thala setshwantsho sa phologolo e e tlhaga. Morago o bolelele tsala ya gago ka moo phologolo e, e dirisang maano a ipabalelo ka teng gore e se ka ya bonwa.



Morutabana:
Saenafa:
Letlha:





27

Diphologolo tsa metsi



A re kwaleng

Feleletsa setshwantsho ka go tsenya ditshwantsho kgotsa dithalo tsa diphologolo tse di nnang mo nokeng.

Kgweditharo 2 – Beke 6 – Papetlanatiro





Dibopiwa tsa botennye jwa metsi

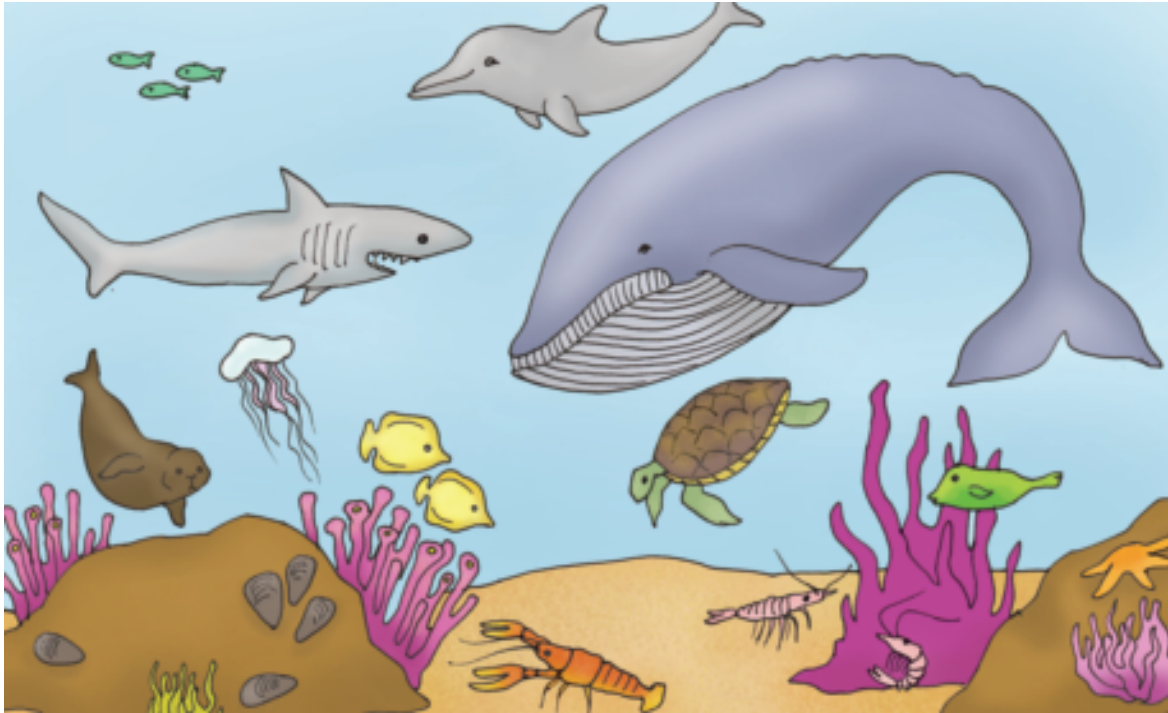


28

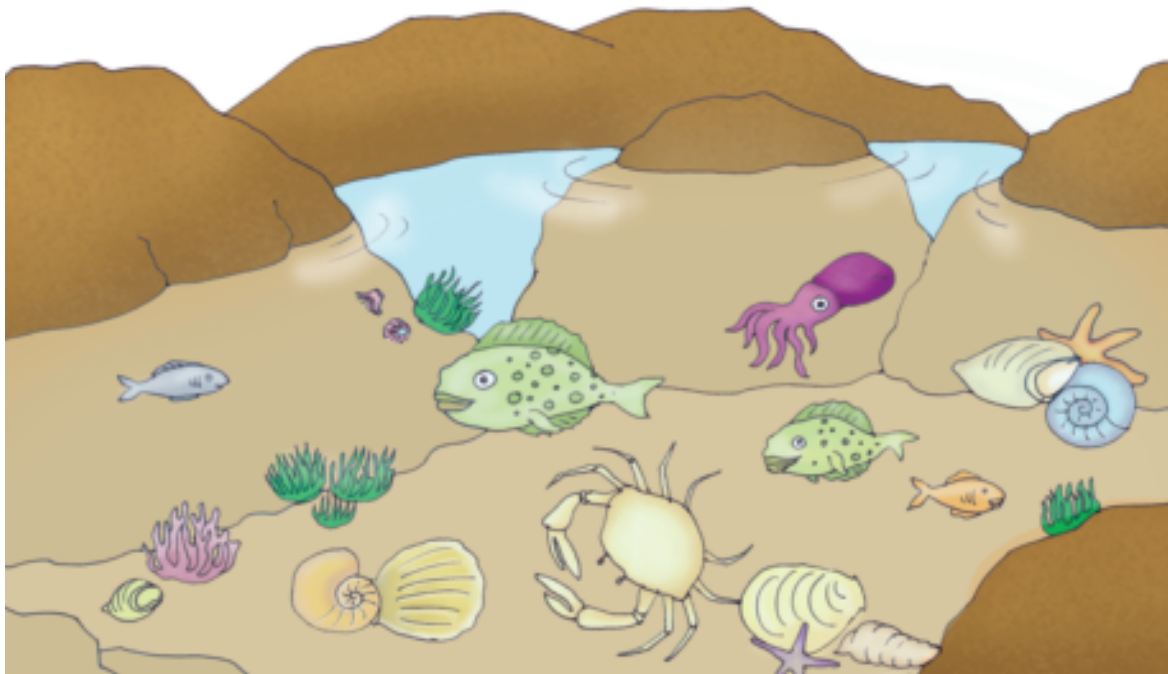


A re lebeleleng

A re lebeleleng diphologolo tsotlhe tse di farologaneng tse di tshelang mo metsing a a letswai.



Gape go na le diphologolo tse dinnye tse di tshelang mo dip hulung tsa matlapa tse di seng boteng.



Kgweditharo 2 – Beke 6 – Papetlanatiro

Morutabana:
 Saenafa:
 Letlha:



Botaki jwa diphologolo



A re bueng

Bua ka ga diphologolo tsotlhe tsa lewatle tse di mo ditshwantshong tse.

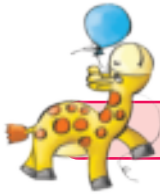
- Ke diphologolo dife tsa lewatle tse di jewang ke batho?
- Ke diphologolo dife tsa lewatle tse di kotsi?
- Mmele wa tlhapi o phuthilwe le go sirelediwa ka eng?
- O akanya gore go ya go diragala eng fa lewatle le leswefala ka ntlha ya matlakala kgotsa ka maswe a a botlhole?
- Ke mekgwa efe e e farologaneng e lewatle le kgonang go leswefala ka yona?



A re kwaleng

Kwala maina a diphologolo tse o ka di akanyang tse di tshelang mo dinokeng, mo matamong kgotsa mo mawatleng mo dikholomong tse tharo tsa theibole.

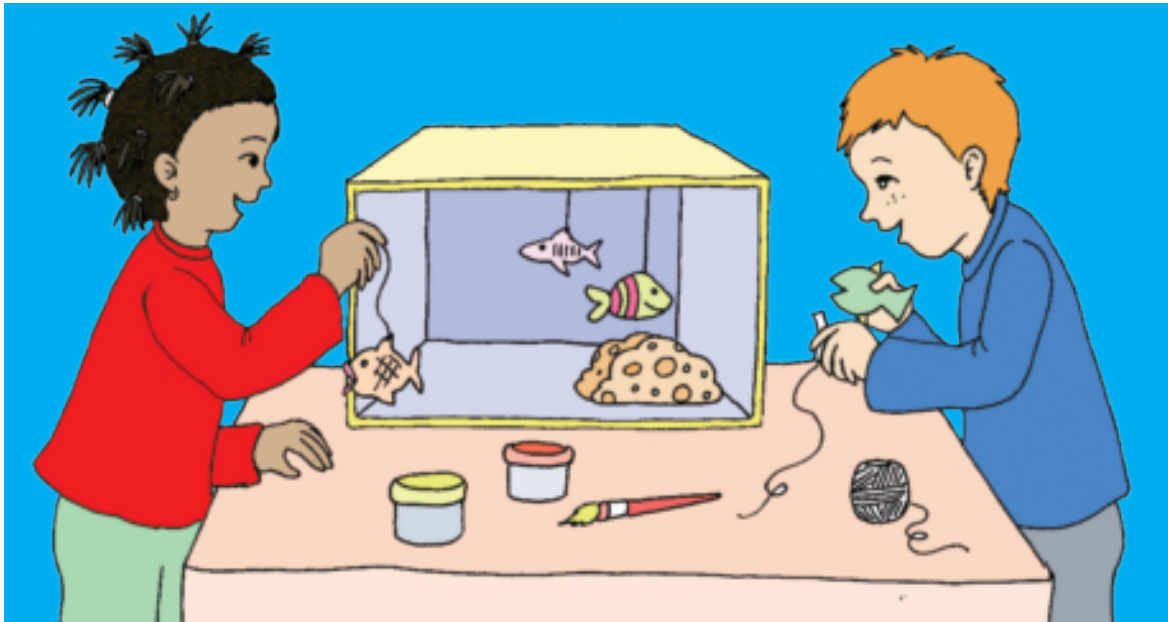
Noka	Lewatle	Letamo



A re bueng

Itirele tanka ya gago ya ditlhapi.

- Penta bogare jwa lebokoso la ditlhako ka botala jwa legodimo le botala jwa tlhaga mme o le retolole ka letlhakore.
- Morago sega tlhapi go tswa kwa bogareng jwa buka.
- Kgomaretsa tlhapi kwa godimo ga lebokoso ka sekgomaretsi le mogala.



A re diragatseng

- Fofa jaaka nonyane ka lebelo le le bonako le le le bonya.
- Khukhutha jaaka phenkwine.
- Fofa jaaka notshe.
- Tsamaya jaaka kankarapa.
- Thuma jaaka tlhapi.
- Tlalatlola jaaka segwagwa.
- Tshameka sala-moeteledipele-morago.
- Tshameka katse-le-legotlo/peba.



30

Diphologolo tse di sikarang dintlo tsa tsona



A re buiseng



A o ne o itse? Ke tsona sentle mo kgapeng ya me, mme ga e ke e nna nnye mo go nna.

Khudu

Khudu ke segagabi sa maoto a mane a a makakaba ka molala le tlhogo tse di matsutsuba. E tsamaya ka iketlo e sikere ntlo ya yona ya kgapa.

Di nna kwa kae?



khukhu.
Ke nna mo lewatleng



khukhunyana
Ke nna mo metsing a a phepa



khudu
Ke phela mo lefatsheng



A re kwalleng

Araba dipotso tse ka ga khudu e e tshelang mo lefatsheng.

A kgapa ya khudu e popota kgotsa e boleta? _____

Kgapa ya khudu e e sireletsa kgatlhanong le eng? _____

Khudu e dira eng fa e tshogile? _____

Dikhudu di ja dijo dife? _____

Letlha:



Kgopa

Lebelela kgapa ya kgopa.

Leitlho

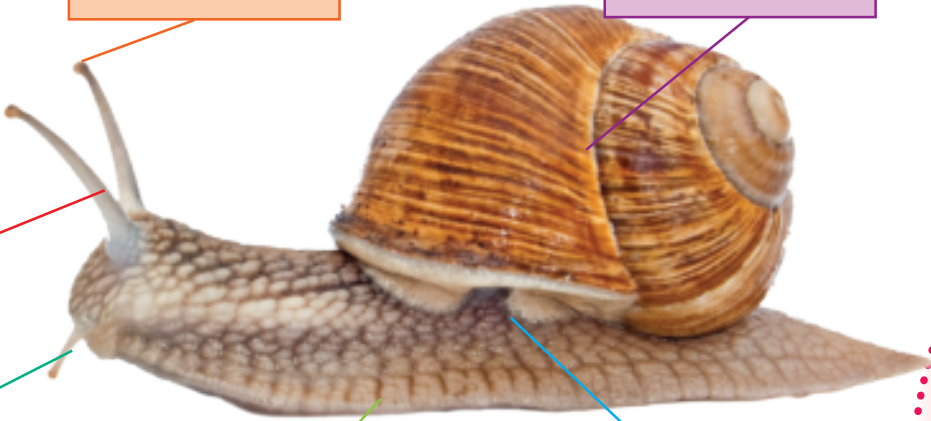
Kgapa

Dinakana tse dileele

Dinakana tse dikhutshwane

Leoto

Phatlhana ya go hema



Kgopa e tsamaya jang? _____

A o setse o kile wa bona kgapa ya kgopa e e lolea? O akanya gore go diragetse eng ka ga kgopa? _____

Dikgapa tsa dikgopa di mmala o o ntseng jang? _____

Ke goreng o akanya gore dikgopa di na le dikgapa? _____



A re kwalleng

O akanya gore ke tshela kwa kae? Kwala fa thoko ga setshwantsho sa me, gore a nka aga ntlo ya me mo **setlhareng**, fa **fatshe** kgotsa mo **metsing**.



















Diphologolo tse di ikagelang dintlo



A re kwalleng

Golaganya ditshwantsho tsa diphologolo tse le ditshwantsho tsa dintlo tsa tsona.



A re buiseng

Dinotshe

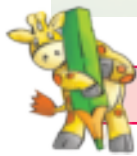
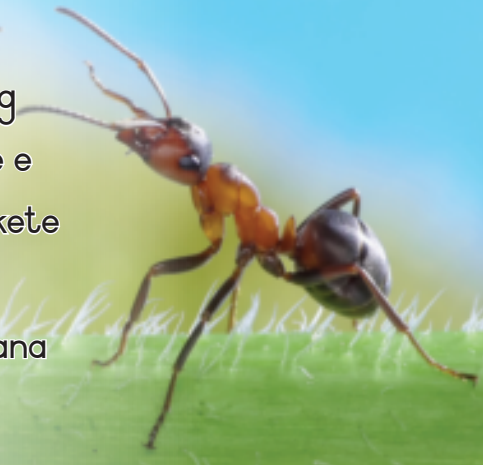
Dinotshe di tshela mo diphagong.
Di aga diphago tsa tsona ka mamepe.
Di boloka dijo tsa tsona mo diphagong.





Ditshoswane

Ditshoswane di aga mefuta e e farologaneng ya dintlo mo tikologong ya tsona. Tshoswane e nnye e kgona go sikara selo se se fetang bokete jwa yona gane. Ditshoswane di a buisana. Di a tsibosana fa go na le kotsi, gape di bolelelana gore di ka bona dijo kae.



A re kwaleng

Ke eng o akanya gore ditshoswane di ikagela dintlo?

Mmaba wa tshoswane ke eng?

Ditshoswane di dirisa eng go ikagela dintlo?



A re buiseng

Dinonyane

Dinonyane di aga dintlhaga jaaka dintlo le go nna le lefelo la go beela mae. Bogolo jwa sentlhaga bo laolwa ke bogolo jwa nonyane. Dinonyane di dirisa eng go aga dintlhaga tsa tsona?



Ke phologolo efe e e leng mmaba wa nonyane?



A
a

M
m

B
b

N
n

C
c

O
o

D
d

P
p

E
e

Q
q

F
f

R
r

G
g

S
s

H
h

T
t

I
i

U
u

J
j

V
v

K
k

W
w

L
l

X-Z
x-z



A large rectangular area containing a vertical red margin line on the left side and horizontal blue lines for writing, typical of a notebook page.

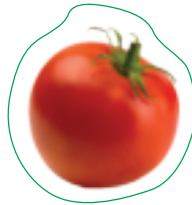
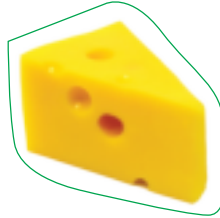
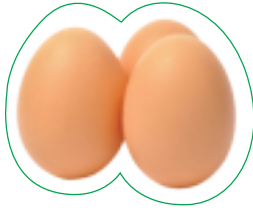
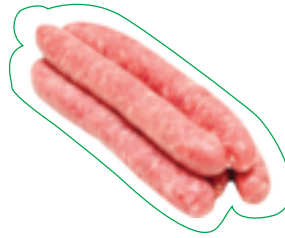
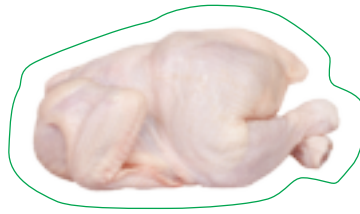




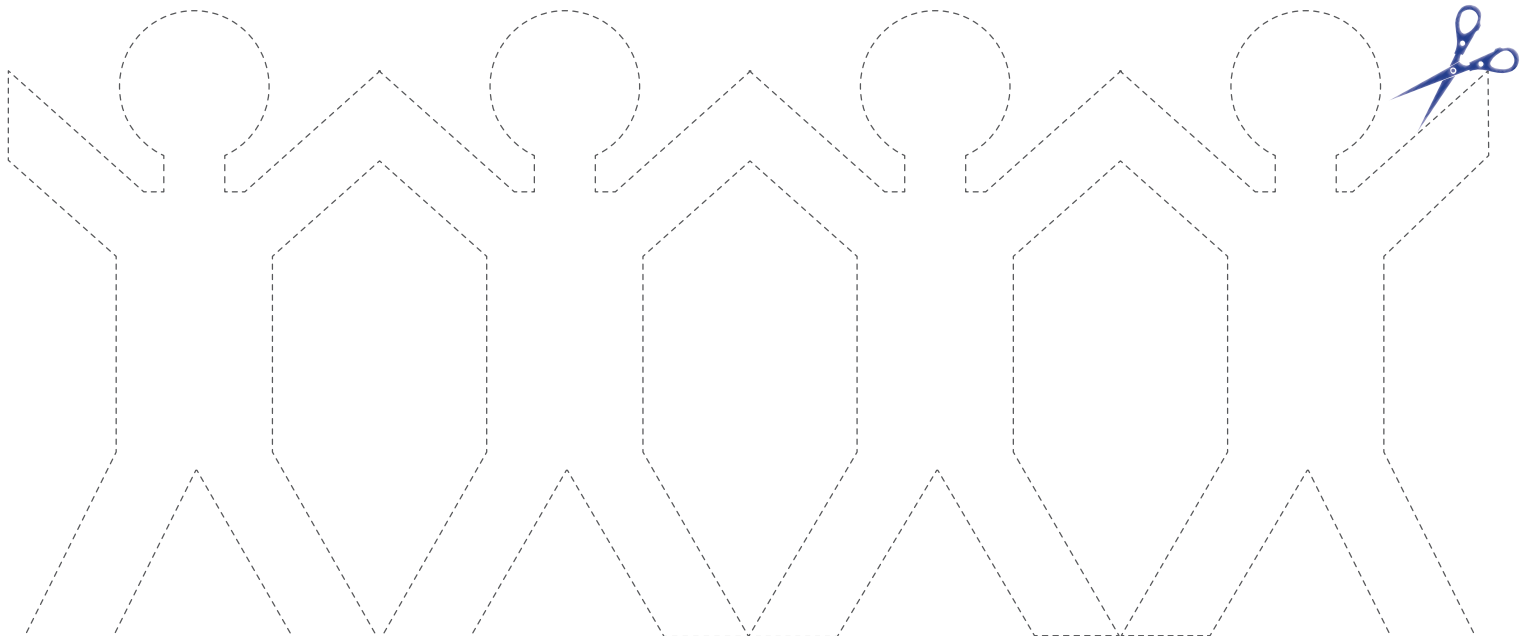
A large rectangular area containing a vertical red margin line on the left side and horizontal blue lines for writing, typical of a notebook page.



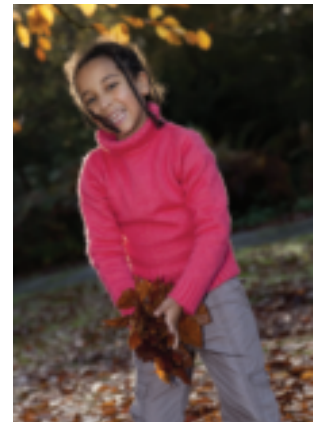
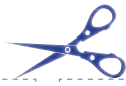
P.29



P.19



P.36-37



P.57

