

Ibuyekeziwe –  
Ihambisana  
ne-CAPS

Ibanga lesi-

2



Amakhono Empilo  
ISIZULU

Incwadi yoku-  
Ithemu 1 & 2



Workbooks available in this series:

- *Grade R*  
(in all official Languages);
- *Literacy/Home Language Grades 1 to 6*  
(in all 11 official Languages);
- *Mathematics Grades 1 to 3*  
(in all 11 official Languages);
- *Mathematics Grades 4 to 9*  
(in Afrikaans and English);
- *Life Skills Grades 1 to 3*  
(in all 11 official Languages); and
- *Grades 1 to 6 English First Additional Language.*

ISBN 978-1-4315-0255-4



LIFE SKILLS IN ISIZULU  
GRADE 2 – BOOK 1  
TERMS 1 & 2  
ISBN 978-1-4315-0255-4  
THIS BOOK MAY NOT BE SOLD.  
14th Edition

Igama:

Iklasi:



basic education  
Department:  
Basic Education  
REPUBLIC OF SOUTH AFRICA

## Okuqukethwe

### Ithemu 1

ikhasi

- 1 Sidinga ukudla okunempilo ukuze siphile .....2
- 2 Amanzi asinika impilo .....4
- 3 Songa amanzi.....6
- 4 Umoya ohlanzekile usinika amandla 8
- 5 Mina kanye nabanye..... 10
- 6 Abantu esiphila nabo..... 12
- 7 Akuphele ukuhlukumezana ..... 14
- 8 Wonke umuntu ubalulekile ..... 16
- 9 Indlela esizizwa ngayo..... 18
- 10 Abantu abakhubazekile .....20
- 11 Bonke abantwana babalulekile .....22
- 12 Amaqhawe ami..... 24
- 13 ukuhlanzwa kwamanzi .....26
- 14 Ukuhlala uphilile .....28
- 15 Ukudla okusheshayo nokungasheshi ukubola .....30
- 16 Izinsuku zenkolo nezinye ezibalulekile .....32

### Ithemu 2

ikhasi

- 17 Izikhathi zonyaka .....34
- 18 Izikhathi ezine zonyaka .....36
- 19 Izikhathi zonyaka .....38
- 20 Ukugqokela isimo sezulu.....40
- 21 Imithelela yezikhathi zonyaka .....42
- 22 Ukutshala ubhontshisi .....44
- 23 Izilwane zasepulazini .....46
- 24 Epulazini .....48
- 25 Izilwane zasendle .....50
- 26 Zicasha kanjani izilwane .....52
- 27 Izilwane zasemanzini .....54
- 28 Izilwane zasekujuleni kwamanzi .....55
- 29 Ulwazi ngezilwane zasemanzini ..56
- 30 Izilwane ezihamba nezindlu zazo .....58
- 31 Izilwane ezizakhela indawo yokuhlala.....60
- 32 Isichazamazwi sami ..... 62



UNK Angie Motshekga,  
uNgqongqoshe weMfundo  
Eyisisekelo



UDkt Reginah Mhaule,  
iSekela loMnyango  
weMfundo Eyisisekelo

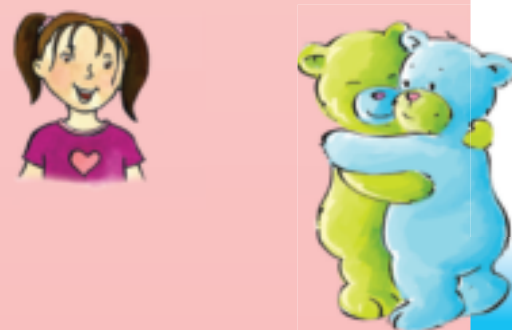
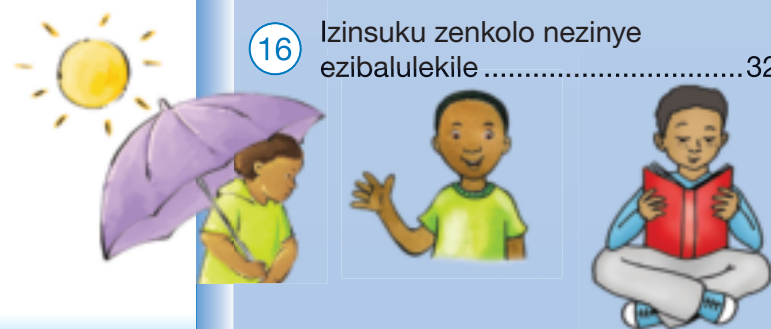
Lezi zincwadi zokusebenzela zenzelwe abantwana baseNingizimu Afrika ngaphansi kwesandla sikaNgqongqoshe weMfundo Eyisisekelo, uNk Angie Motshekga, neSekela likaNgqongqoshe weMfundo Eyisisekelo, uDkt Reginah Mhaule.

Lezi zincwadi ezibizwa ngeRainbow Workbooks ziyingxenywe yoMnyango weMfundo Eyisisekelo lapho uMnyango uzama khona ukungenelela ukuze kuthuthukiswe imfundo yabantwana bamabanga asuka kwelokuqala kuya kwelesithupha eNingizimu Afrika. UMnyango weZimali uxhase lo mkhankaso kaHulumeni njengento yokuqala uHulumeni azibekela yona ukuthi ayisukumele. Uxhaso loMnyango weZimali lusize uMnyango wezeMfundo ukuthi ukwazi ukukhiqiza uphinde usabalalise ngaphandle kwenkokhelo lezi zincwadi zokusebenzela ngazo zonke izilimi zaseNingizimu Afrika ezisemthethweni.

Sinethemba lokuthi othisha bazozithanda basebenze kangcono ngazo lezi zincwadi ekufundiseni kwabo kwansuku zonke, baphinde bathole futhi isiqiniseko sokuthi abafundi babo bafundiswa konke abamelwe ukufundiswa khona njengoba kuvela kusilabhasi yabo. Sizamile ukuqiniseka ukuthi sifaka izithonjana (ama-icon) emisebenzini yokwenziwa ukuze uthisha akuthole kulula ukuyilandela nokuqonda ukuthi umfundi yini alindeleke ukuyenza.

Sinethemba futhi lokuthi abantwana uqobo lwabo bazokujabulela ukusebenzisa lezi zincwadi ekukhuleni kwabo bakhule nolwazi ezilukethe, bese kuthi wena njengothisha wabo uthokoze kanye nabo ekugcineni.

Sifisela wena nomfundi omfundisayo impumelelo ngenkathi usebenzisa lezi zincwadi.





# IBanga lesi-

# 2



Amakhono Empilo  
ISIZULU  
Incwadi yoku-I



Le ncwadi ngeka-



# Sidinga ukudla okunempilo ukuze siphile



Masifunde

Imizimba yethu idinga ukudla okunempilo ukuze sikhule. Kumele sidle ukudla okunempilo okuvela ezinhlotsheni ezinhlanuzokudla zonke izinsuku. Sidinga ukudla ukudla okunempilo ukuze sikwazi ukuba namandla okwenza zonke izinto esidinga ukuzenza. Uma singadli ukudla okunempilo, singagula.

## Izinhlobo ezinhlanu zokudla

Imikhiqizo yokusanhlamvu

Imifino nezithelo

Abanye abantu badla izitshalo kuphela. Lokhu kusho ukuthi abayidli inyama. Badla kakhulu kwizinhlobo ezine zokudla.

Inyama, inhlanzi, inkukhu, amantongomane kanye nobhontshisi

Okusamafutha

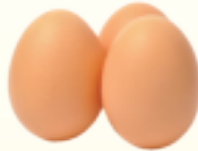
Imikhiqizo yobisi





### Masenzi lokhu

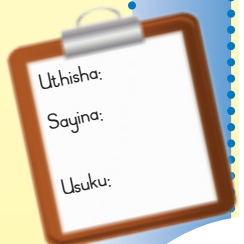
Xoxa nomngane wakho mayelana nokuthi yikuphi kwalokhu kudla okunempilo. Kukokelezele.



### Bhala

Enza sengathi uya esuphamakethe nomama wakho, niyothenga ukudla okuzodliwa ntambama. Enza uhla lwezinto ezizothengwa eziwuhlobo lokudla okunempilo emndenini.

### UHLA LWEZINTO EZIZOTHENGWA

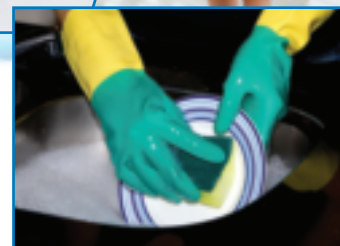


# Amanzi asinika impilo



## Masikhulume

Yini eyenza siwadinge amanzi?  
 Abantu, izitshalo kanye nezilwane  
 kuyawadinga amanzi. Abantu, izitshalo  
 kanye nezilwane kuyawadinga amanzi ukuze  
 kuhlale kuphilile. Amanzi yiwo azungelezisa  
 ukudla esikudlayo kuye ezingxenyeni  
 ezahlukene zemizimba yethu, yiwo futhi  
 asiza umzimba ukuthi ukwazi ukukhipha  
 izinto ezingadingeki emzimbeni.



## Masenzi lokhu

Zonke izinsuku siyawasebenzisa amanzi emakhaya. Xoxela umngane wakho ngezinto zonke ongazicabanga esisebenzisa amanzi kuzo. Emva kwalokho udwebe izithombe ezi-4 ukukhombisa ukuthi siwasebenzisa kanjani amanzi kulezo zinto. Bhala isihloko sesithombe ukuchaza ukuthi simayelana nani.

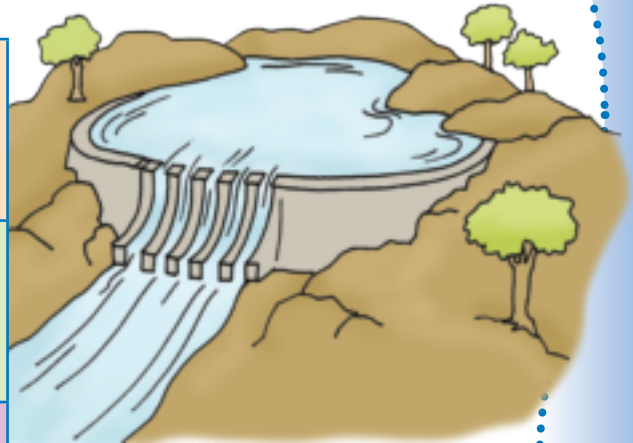



Bhala

Siwathola kuphi amanzi? Dweba umugqa uqondanise igama ngalinye nesithombe esifanele.



Isiphethu
iwindimili
umfula
idamu
umthombo wamanzi



Masiphumele ngaphandle

Ngaphambi kokwenza noma yini ngaphandle, qala ngokuzelula njengekati. Lokhu kuzokwenza umzimba unyakaze kalula. Zelule nangemva kokwenza okuthile ngokuthi uphumule uphole. Lokhu khona kukusiza ukuthi ungabi nobuhlungu bezicubu.

- Gxuma njengesele. Yenza umsindo wamasele.
- Nqakisanani ngebhola noma ngesaka likabhontshisi. Libambeni.
- Manje phonsa ibhola noma isikhwama sikabhontshisi phezulu bese usinqaka.
- Thwala isaka likabhontshisi ugjijimisane nomngane nithwele. Bheka ukuthi uzohamba ibanga elingakanani lingawile isaka olithwele.



# Songa amanzi



## Masikhulume

Amanzi ayinto ebalulekile, kumele siwonge. Xoxa nomngane wakho ngezindlela ezahlukene esingazisebenzisa ukonga amanzi.



## Bhala

Bhala ezikhaleni izindlela ezimbili esizisebenzisa ukonga amanzi.

1.

---

---

2.

---

---



## Masenzi lokhu

Sebenzisa amakhilayoni nopende wenze iphosta enemibala ekhuluma ngokongiwa kwamanzi. Iphosta yakho kumele igqugquzele abanye ukuthi bonge amanzi. Uma sewuyiqedile khombisa abangane bakho.



### Masiphumele ngaphandle

Masidlaleni umdlalo othi "Sikhathi sini, Mnu Mpungushe?"

Oyedwa wenu makabe yimpungushe.

Buzani ngamunye nithi "Sikhathi sini, Mnu Mpungushe?"

Impungushe kumele isho isikhathi uma ibuzwa. Kodwa uma ithi "yilantshi!" izosuka ngejubane inijahe. Kumele niyibalekele ingalinge inibambe.



Dlalani umdlalo wehulahuphi noma wentambo eyindilinga.

Wena nomngane wakho kumele nishintshane ngokuhamba phezu kwendilinga, nihambe ngezinyawo kuqala bese nihamba ngezandla.

Ningayibamba indilinga yenu eyintambo niyiphakamise, umngane achushe kuyo. Shintshanani ngokwenza lokhu.



Okokugcina, emaqoqweni anabantu aba-4, zilungiseleleni ukwethula umdanso waseNingizimu Afrika.

Utshisa:  
Sayina:  
Usuku:





# 4

# Umoya ohlanzekile usinika amandla

IThemu 1 – ISonto 2 – Ikhasi Lokusebenzela



Masifunde

Umoya esiwuphefumulayo une-oksijini. Usisiza ukuthi imizimba yethu ikwazi ukusebenzisa ukudla esikudlayo. Sibe sesithola amandla siphile.

Uma siphefumula umoya ongcolile, imizimba yethu iyehluleka ukusebenza.



Bhala

Hlala nomngane wakho. Gcwalisani izikhala ezingezansi nobabili

Ngidinga umoya ohlanzekile ngoba \_\_\_\_\_

Uma umoya ungcolile \_\_\_\_\_

Umoya uyangcola uma \_\_\_\_\_

Izinto esingazenza ukugcina umoya uhlanzekile:

1. \_\_\_\_\_

2. \_\_\_\_\_





### Masifunde

Abantu badinga ukukhanya kwelanga ukuze baphile. Kusiza imizimba yethu ukuthi yakhe uVithamini D. Wona-ke siwudingela ukuba namathambo aqinile.

Ilanga uma selikhanya kakhulu libuye libe yinkinga. Liletha izinhlungu zokushiswa yilanga. Kufanele ugcobe ukhilimu wokuvikela ilanga, noma isigqoko selanga ukuvikela isikhumba sakho.



### Bhala

Gcwalisa lezi zikhala ezingezansi:

Ngingavikeleka elangeni uma:

1. \_\_\_\_\_
2. \_\_\_\_\_
3. \_\_\_\_\_



### Masicule

Cula leli culo futhi ushaye izandla zihambisane nalo.



Gcoba ukhilimu wokuvikela ilanga noma isigqoko selanga ukuze uzivikele emisebeni yelanga.



**Wena ungukukhanya kwelanga lami ukuphela kokukhanya kwelanga lami.**

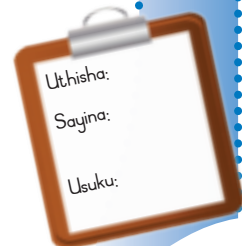
**Uyangijabulisa kakhulu**

**uma isibhakabhaka semboze ngamafu.**

**Awusoze wakwazi lokhu, sithandwa,**

**Ukuthi ngikuthanda kangakanani.**

**Ngiyakucela, ungangiphuci imisebe yami yelanga.**



# Mina kanye nabanye



Masikhulume

Sonke siyathanda ukuba nabangane beqiniso. Umbona kanjani umngane weqiniso?



Bhala

Bhala ezikhaleni ezingezansi uhla lwezinto ezenza umuntu abe ngumngane weqiniso.

1. \_\_\_\_\_
2. \_\_\_\_\_
3. \_\_\_\_\_
4. \_\_\_\_\_



Bhala

Bhekisisa le mibuzo bese ubhala izimpendulo zayo phansi.

Bangaki abangane onabo?

Ngubani igama lomngane wakho weqiniso?

Seninesikhathi esingakanani ningabangane?

Yini oyithanda kakhulu ngomngane wakho?



### Masikhulume

Yiya kumngane wakho nihlale phansi nikhulume ngalawa mazwi. Faka uphawu (✓) ebhokisini uma kuyiqiniso, ufake uphawu (✗) uma kuliphutha.

## Uhla lokuhlola ubungane

	Bhala u ✓ noma i ✗
Umngane wami uyanginakekela.	
Umngane wami uyangisiza.	
Umngane wami uhlanganyela nami izinto eziningi.	
Umngane wami akalwi nakancane nami.	



### Masenzi lokhu

Yini ongayenza uma ufuna ukukhombisa umngane wakho ukuthi ubalulekile kuwe? Dweba manje isithombe esiveza lokhu esikhaleni. Ubokhumbula ukuhlobisa ifreyimi yesithombe sakho. Uma usukwenzile lokhu, khuluma ngemibala ezothile kanye nehehayo oyisebenzisile kulesi sithombe.



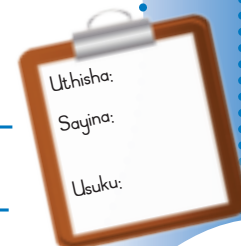
### Bhala

Bhala imisho emibili ngesithombe sakho.

---



---



Uthisha:  
Sayina:  
Usuku:



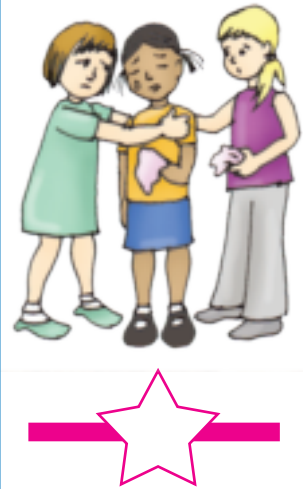
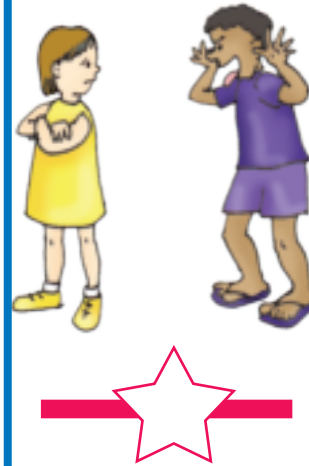
# 6

# Abantu esiphila nabo



Masikhulume

Buka izithombe. Zama ukukhumbula ukuthi abangane beqiniso bayaye benzeni. Xoxa neqembu lakho ngalokhu. Zama ukukhumbula ukuthi abangane ababi bayaye benzeni. Beka uphawu (✓) esithombeni ngasinye ukukhombisa ubungane, nophawu (✗) kulabo abaveza ubungane obungalungile.





Masifunde

Funda umusho ngamunye bese ufaka umbala ebusweni obuthi Yebo 😊 noma ebusweni obuthi Cha ☹️.

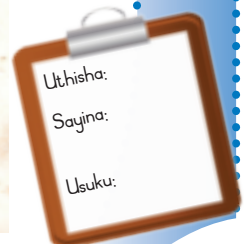
<p>Ngingumngane weqiniso.</p>		
<p>Ngiyabanakekela abangane bami.</p> 		
<p>Nginomusa kubafundi enginabo ekilasini.</p>		
<p>Abafundi enginabo ekilasini banomusa kimi.</p>		
<p>Ngiyabahlonipha abantu engiphila kanye nabo.</p> 		



Masiphumele ngaphandle

Masidlaleni "Yima esithunzini sami".

Wena nabangane bakho zamani ukuma esithunzini somunye nomunye. Shintshanani nithole ukuthi zingaki izithunzi enikwazi ukuma kahle kuzo. Ningalokhu nigudlukelana ukuze ubalekele abangane bakho ukuthi bangami esithunzini sakho.





# 7

# Akuphele ukuhlukumezana esikoleni

IThemu 1 – ISonto 4 – Ikhasi Lokusebenzela



**Bhala**

Buka isithombe ngasinye.

Yini ongayenza uma abanye abantwana bekuhlukumeza? Bhala umusho owodwa eduze kwesithombe usho ukuthi kumele abantu baphathane kanjani.



---

---

---

---

---

---

---

---



---

---

---

---





### Masenzi lokhu

Wena nomngane wakho dlalani ukuba yingane ehluke emnye. Emva kwalokho yishoni ukuthi yini engenziwa ukuvimbela ukuhlukumezana kwezingane.

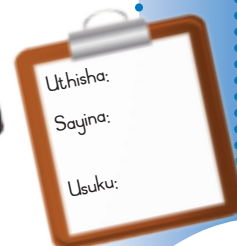


### Masiphumele ngaphandle

Manini amaqoqo ahamba ngaba-5.

Yimani umugqa ninikezane ibhola ngamunye ngamunye nilandele umugqa. Bhokani ukuthi yiliphi iqembu elikwazi ukudlulisa ibhola lize liyofika ekugcineni ngesikhathi esifushane kakhulu. Uma niqeda, zamani ukudluliselana ibhola ngezindlela ezahlukahlukene.

- Dlulisa ibhola nilikhiphe phakathi kwemilenze liye kumngani ongemuva kwakho.
- Dlulisa ibhola uleqise ikhanda liye kumngane ongemuva kwakho.
- Dlulisa ibhola liye kwesokunxele somngane ongemuva kwakho.
- Dlulisa ibhola liye kwesokunxele somngane ongemuva kwakho.
- Manje phonselanani ibhola bese nibheka ukuthi ningalingqaka kangaki.





# Wonke umuntu ubalulekile

IThemu 1 – ISonto 4 – Ikhasi Lokusebenzela

8



Masikhulume

Buka izithombe usho ukuthi zifana ngani lezi zingane. Yisho futhi ukuthi zihlukene ngani.





### Masifunde

Yenzani lokhu eqenjini lenu. Bukani bonke abantwana abakhona eklasini lenu. Bese nifunda la mazwi alandelayo. Uma okushiwoyo emazwini kuliqiniso faka uphawu (✓) ebhokisini elikwesokudla, uma amazwi eliphutha, faka uphawu (✗).

	Beka u ✓ Noma i ✗
Kungabe abafana bayafana namantombazane?	
Kungabe izinwele zabo bonke zinombala ofanayo?	
Kungabe bonke banombala ofanayo wamehlo?	
Kungabe bonke banezandla ezilinganayo?	
Kungabe bonke abantwana bade ngokulinganayo?	



### Bhala



### Masikhulume

Uyabona yini ukuthi asifani thina bantu? Uyabona kodwa ukuthi siyafana ngenye indlela? Xoxa ngokuthi sifana kanjani.

Dweba isithombe sakho. Sebenzisa upende womlomo ukwenza imidwebo eseminweni yakho ingafani neyabanye abantwana. Beka umunwe wakho eduze kwesithombe esisesikhaleni.



Uthi bewazi ukuthi akekho umuntu emhlabeni onemidwebo eseminweni efana neyomunye? Wena nje wehlukile kwabanye abantu futhi ubalulekile kakhulu!



Uthisha:  
Sayina:  
Usuku:



# Indlela esizizwa ngayo



Masikhulume

Xoxani ngokuthi niphatheka kanjani uma kwenzeka into enhle. Bese nikhuluma ngokuthi niphatheka kanjani uma kwenzeka into embi. Lokhu sikubiza ngemizwa yomuntu. Bhala usho ukuthi baphatheke kanjani laba.











Bhala

Bhala izimpendulo zemibuzo elandelayo.

Yini ekwenza ujabule?


Yini ekwenza ukhathazeke?


Yini ekwenza wesabe?

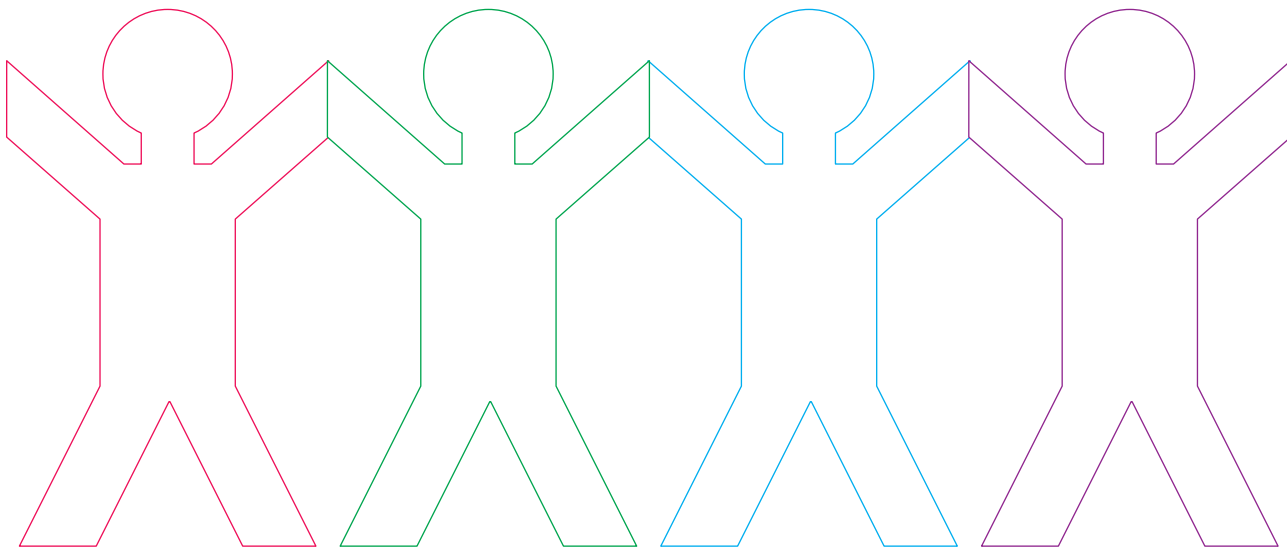
  


Yini ekwenza udingwe?



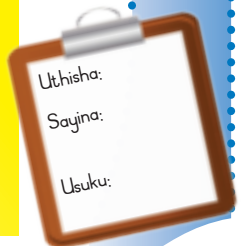
### Masenzi lokhu

Dweba bese ufaka umbala iketanga lobungane. Zama ukwenza unodoli ngamunye abukeke ngendlela ehluke elikhombisa ukuthi abantu abafani. Uma usukwenzile lokhu ungasika iketanga lobungane ekhasini lokusika eliphakathi nendawo kuleli bhuku. Yenza unodoli ngamunye ehluke, benze bame phezu kwetafula lakho ukuze bakukhumbuze ukuthi sonke singabantu sihlukile komunye nomunye.



### Masiphumele ngaphandle

Khulisa umzimba wakho ube mkhulu impela.  
Wunciphise ube mncane kakhulu.  
Welule ube mude kakhulu.  
Wenze ube mfushane kakhulu.





Masikhulume

Buka izithombe.

- Yiziphi izinhlobo zokukhubazeka ozibonayo?
- Zisebenzisani lezi zingane ozibonayo ukuze zisizakale?
- Yiziphi zini zezinkinga ezinazo nsuku zonke lezi zingane empilweni yazo?
- Yisho ukuthi singazisiza ngani.



Bhala

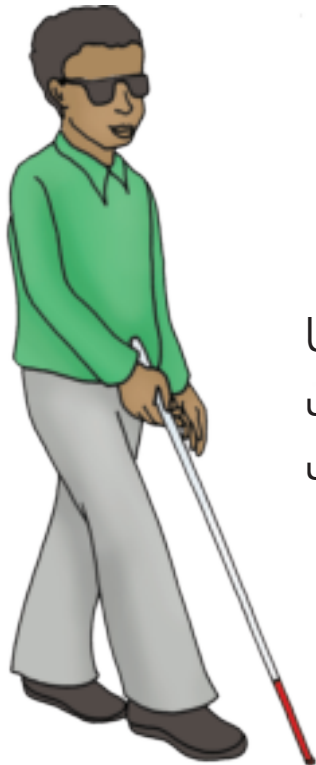
Buka izithombe

Qedela le misho.

URosemary akakwazi ukuhamba.

Usebenzisa \_\_\_\_\_  
ukuya le nale.

isihlalo Sabakhubazekile

UThabo uyimpumpu the  
usebenzisa \_\_\_\_\_  
ukuthola lapho eya khona.

inja ehola abantu





izinsizakuzwa



UPele akezwa ezindlebeni

Usebenzisa \_\_\_\_\_  
ukuze akwazi ukuzwa.



ulimi lwabangakhulumi



UJabu uyisimungulu.

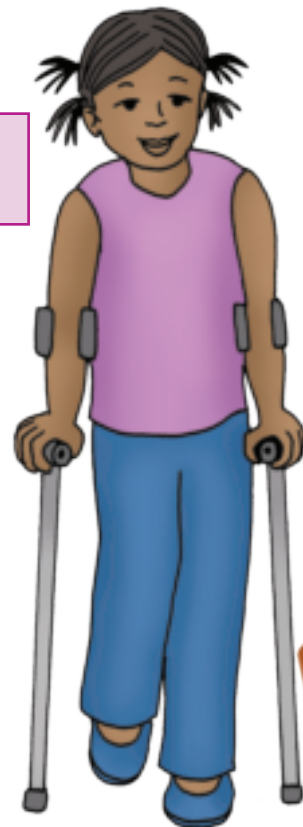
Usebenzisa \_\_\_\_\_ ukuze  
akwazi ukuxhumana nabantu.



izinduku zokuhamba  
abakhubazekile

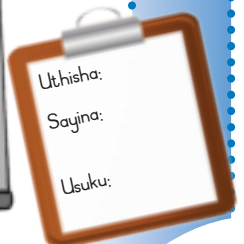
UNomsa usebenzisa

\_\_\_\_\_ ukuze akwazi  
ukuzihambela.



Masenzeni lokhu

Sebenzisa ubumba noma inhlama  
yokudlala ukubumba ivasi noma inkomishi.



# Bonke abantwana babalulekile



Masikhulume

Bahluke ngani laba bantwana kuwe?  
Bafana ngani nawe?



Masifunde

Abantu emhlabeni jikelele banamahlolide athile abalulekile.

Sonke siyathanda ukudlala nokucula.

Sonke sidinga ukudla esizokudla.

Kumele sonke siye esikoleni.

Uma sigula sidinga ukuya kudokotela.

Kumele sonke sihlanzeke.

Akumele siqashwe.

Sonke singabantwana.

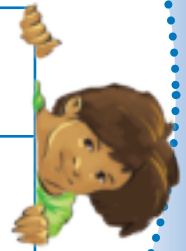




### Bhala

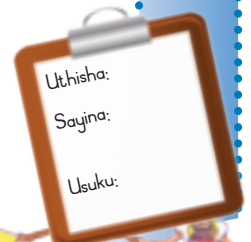
Buza abangane aba-3 le mibuzo. Gcwalisa izimpendulo ezikheleni ezingezansi.

Bhala amagama abangane bakho.			
Ukhonza kuphi?			
Yiziphi izinsuku ezibalulekile enizibungazayo?			
Udlani?			
Yiziphi izimpahla ezikhethekile ozigqokayo?			
Ngubani enihlanganyela naye uma nibungaza?			



### Masenzi lokhu

Buka isithombe. Yibalazwe lomhlaba wethu. Umhlaba wethu unezwe kanye nolwandle. Faka umbala osasibhakabhaka olwandle. Faka umbala onsundu ezweni. Dweba izinhlanzi ezimbalwa olwandle.



# Amaqhawe ami



## Masikhulume

Yisho ukuthi bakhona yini abantwana abakhubazekile esikoleni sakho.

Yini engenziwa yisikole ukubasiza esikoleni?

Bayakwazi ukuba ngompetha ezintweni ezithile abantu abakhubazekile?



## Masifunde

Kunamaqhawe akhubazekile esiphila nawo. Lolu hlobo lwabantu luyisibonelo kithina. ENingizimu Afrika Kunamaqhawe ezemidlalo akhubazekile emzimbeni. Bakhona abantu obaziyo abanekhono kwezemidlalo?

UNatalie du Toit wanqamuka umlenze wesokunxele engozini yesithuthuthu. Uhamba ngomlenze wokwakhiwa kodwa uma ebhukuda usebenzisa umlenze owodwa.



## Masikhulume

Xoxa ngabantu abakhubazekile abenza izinto ezimangalisayo. Cabanga ngalokhu.

- Abantu abayizimpuputhe abadlala izinsimbi zomculo. Ukhona onjalo omaziyo?
- Abantu abangezwa ababhala umculo kahle. Unaso isibonelo somuntu onjalo?



Bhala

Esikhaleni esilandelayo, nikeza iminingwane yeqhawe lakho noma umuntu ongathanda ukumlandela.

## Iqhawe lami noma umuntu engithanda ukumlandela ngu:

Dweba isithombe seqhawe lakho noma umuntu ongathanda ukumlandela. Bhala amagama eduze nesithombe sakho amchazayo. Izibonelo: unobungane, uwusizo, unesibindi, unothando.

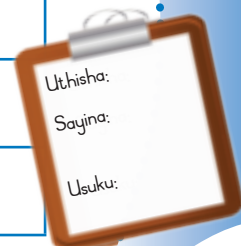
Ungaba kanjani yiqhawe? Xoxisana nomngane wakho ngalokhu. Bhala indaba lapho uzovela khona njengeqhawe. Cwalisisa ngezansi:

Ngolunye usuku

Ngakhetha

Nga

Ngaba yiqhawe ngaleyo ndlela-ke.





## Masifunde

Buka ingilazi yamanzi.

Ikhona into oyibonayo ngaphakathi kuyo?

Cha, awuboni lutho. Kodwa uyazi ukuthi kwenye inkathi kuba namagciwane emanzini? Lawa magciwane ayizinto ezincane ezingabonakali ngeso elejwayelekile. Uma ungake uphuze amanzi ngaphandle kokususa amagciwane, ungahle ugule. Sidinga ukuqiniseka ukuthi amanzi esiwaphuzayo ahlanzekile, awanalutho olubi kuwo.



## Masikhulume

Xoxa ngokuthi yini engenzeka uma singaphuza amanzi angahlanzekile. Buka izithombe ezingezansi. Xoxa nomngane wakho ngezindlela ezahlukene esingazisebenzisa ukuhlanza amanzi.



Faka amaphilisi ekilorini emanzini.



Bilisa amanzi  
isikhathi  
esingangemizuzu  
emi-5



Faka amakhemikhali.



Hluza amanzi.





### Masikhulume

Yimaphi amanzi ocabanga ukuthi kuphephile ukuwaphuza? Faka umbala osasibhakabhaka econsini lamanzi uma ucabanga ukuthi liphephile.

Amanzi omfula



Amanzi adonswa phansi



Amanzi asempompini



Amanzi athengwe esebhodleleni



Amanzi olwandle



Amanzi abiliswe ngeketela



### Masenzi lokhu

Sebenzani ngamaqembu bese nakha into yokusefa amanzi ukuze ahlanzeke. Lalelani ngokucophelela uma uthisha wenu echaza ukuthi nidinga ukwenzani nani.

#### Nazi izinto enizozidinga:

Ibhodlela leplastiki elingamalitha ama-2

Isihlabathi esicolisekile

Isihlabathi esimahhadlahhadla

Amatshana amancane awuhlwayi

Izikelo

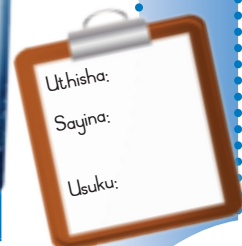
Uvolo



### Bhala

Nikeza lezi zinyathelo izinombolo ukuze kulandelane kahle ukwakhiwa kwesisefo samanzi.

	Thela isihlabathi esicolisekile phezulu kukavolo.
	Phendula ibhodlela ulibhekise phansi.
	Faka isihlabathi esimahhadlahhadla.
	Sika ngokuqaphelisisa isinqe sebhodlela leplastiki.
	Thela amanzi anodaka phakathi.
	Faka amatshana awuhlwayi ebhodleleni.





14

# Ukuhlala uphilile



Masifunde

Funda ubone lezi zinto eziyimikhuba emihle nemibi. Uma ucabanga ukuthi wumkhuba omuhle, faka uphawu (✓), Uma ucabanga ukuthi wumkhuba omubi, faka uphawu (✗).

IThemu 1 – ISonto 7 – Ikhasi Lokusebenzela

Imikhuba	Kuhle	Kubi
Uthisha usiza abantwana ukuthi bakwazi ukufunda.	✓	✗
Ngidla ukudla okunempilo.		
Ngilahla udoti ngefasitela lemoto noma letekisi.		
Ngigeza izinwele njalo.		
Ngidla amaswidi amaningi.		
Ngihlanza izinzipho nezindlebe.		
Ngixubha amazinyo kanye ngenyanga.		
Ngicosha udoti ngiwujikijele emgqonyeni wawo.		
Ngihlanza izandla njalo uma ngibuya endlini encane.		
Uma ngikhwehlela noma ngithimula ngibeka izandla emlonyeni.		
Ngiyazivocavoca njalo.		
Ngihlanza izandla ngaphambi kokuthi ngidle.		
Ngilala phambi kwethelevishini isikhathi eside.		
Ngihlala nabantu ababhemayo.		



Yenza iphosta mayelana nemikhuba emihle nemibi.

Masenzi lokhu



Bhala

Yihlole iphosta yakho. Funda okushilo bese ubeka ubuso obumamathekayo eduze kwako uma kuyiqiniso, noma ubuso obuphatheke kabi uma lokho kungelona iqiniso.

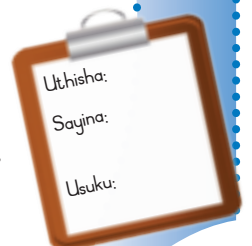


	Yebo 	Cha 
Iphosta yami inemibala futhi ihlanzekile.		
Ngikuthandile ukwenza iphosta		
Ngikuthole kunzima ukwenza iphosta		



Masiphumele ngaphandle

- Ucabanga ukuthi ungagxuma ufike kuphi? Sebenzisa imicwi emithathu yezintambo. Bese uyijomba. Ungalokhu uyigqagqanisa ukuze ubone ukuthi ungakwazi ukujomba ufike kuphi.
- Manje cela abangane bakho ababili ukuba bashwibe intambo ukuze uyijombe.
- Shintshanani ngokujomba intambo.



Uthisha:  
Sayina:  
Usuku:



# Ukudla okusheshayo nokungasheshi ukubola



## Masikhulume



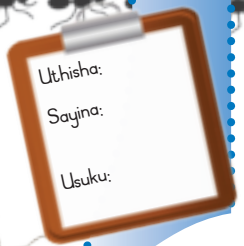
Khuluma ngokudla okudinga ukubekwa esiqandisini ukuze kungonakali. Khetha ukuthi yikuphi okungadingi ukubekwa endaweni ebandayo, okungahlala nasekhabetheni nje. Sika izithombe ekhasini lezinto ezisikwayo uzinamathisele esiqandisini noma ekhabetheni.





### Masikhulume

Khuluma ngezindlela esingazisebenzisa ukuvikela ukudla ezinambuzaneni ezifana nezimpukane nezintuthwane.



Uthisha:  
Sayina:  
Usuku:

# Izinsuku zenkolo nezinye ezibalulekile



Masifunde

Abantu emhlabeni wonke jikelele banezinsuku abazigubhayo. Yimaphi amaholide ozowagubha?

NgoKhisimuzi sithola izipho. Nathi sipha abantu izipho. Sipha namalungu omndeni izipho. Siyaye sibe nesihlahla sikaKhisimuzi ekhaya. Izipho sizibeka ngaphansi kwesihlahla sikaKhisimuzi. Siyasihlobisa isihlahla, sibeke inkanyezi phezu kwaso. NgoKhisimuzi sidla ukudla okuningi okumnandi. Ngokhisimuzi sichitha isikhathi esiningi nalabo esibathandayo.



Silinde ngabomvu uDiwali. Yisikhathi lesi lapho sithola khona amaswidi amaningi nezipho. Siyaye siphathe ukudla okumnandi namaswidi sikufake emabhokisini siphe abantu abasivakasheleyo. Sikhanyisa amalambu amancane siwabeke eduze kwezindlu ekhaya.



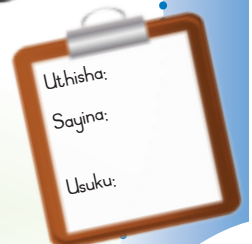
Silinde ngabomvu iHanukkah.  
 Siyaye siphathe ukudla okumnandi.  
 Sidla amakhekhe namadonathi.  
 Siphiswa neziphu. Abazala bethu  
 bayaye beze basivakashele.  
 Siyaye sisizane sonke senze  
 ukudla bese sikhanyisa amakhandlela  
 endlini esikuyo.

Kuzofika futhi isikhathi se-Eid.  
 Nalapho ngethemba ukuthi  
 sizophiwa iziphu. Sizonika abangane  
 bethu iziphu nathi. Sizoba  
 namakhekhe amaningi namaswidi,  
 sidle. Sazi ukuthi u-Eid uma inyanga  
 iyisimo esithile. Lokhu kwenzeka  
 ngezikhathi ezingafani onyakeni.



**Masicule**

Cula iculo olaziyo  
 eliqondene nanoma  
 yiluphi kulezi zinsuku.



# Izikhathi zonyaka

Masikhulume

Buka izithombe zezikhathi ezine zonyaka. Tshela umngani wakho ukuthi ubonani esithombeni. Yisho ukuthi zehluka kanjani Izikhathi ezine zonyaka.



Yisiphi isikhathi sonyaka osithanda kakhulu? \_\_\_\_\_

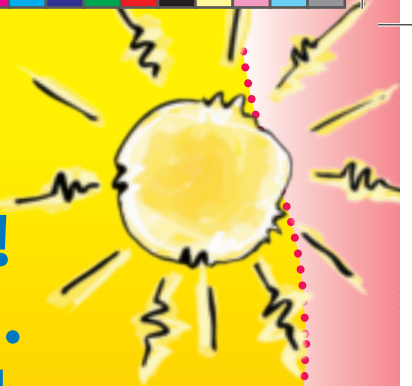
Kungani usithanda lesi sikhathi sonyaka? \_\_\_\_\_

Lungasiphi isikhathi sonyaka usuku lwakho lokuzalwa? \_\_\_\_\_



Masicule

**Sawubona mnumzane Langa!  
Usuku lwakho lusanda kuqala.  
Ngithanda ukubona ubuso bakho  
obukhazimulayo.  
Sawubona mnumzane Langa!**



**Mvula mvula, hamba!  
Abantwana abancane  
bafuna ukudlala.  
Buya ngelinye ilanga.  
Hamba nje usuku olulodwa.**



Uthisha:  
Sayina:  
Usuku:

# 18

# Izikhathi ezine zonyaka



Masenzi lokhu

Sika izithombe zezikhathi zonyaka ekhasini elingemuva kwencwadi. Bese unamathisela isithombe ngasinye eceleni kwegama lesikhathi sonyaka.



uNhlanguvana

uNtulikazi

uNcwaba

# ubusika

uMandulo

uMfumfu

uLwezi

# intwasahlobo





uZibandlela

uMasingana

uNhlolanja

ihlobo



uNdasa

uMbaso

uNhlaba

ukwindla



Masiphumele ngaphandle

Lolonga ikhono lakho lokudlala ibhola.  
Shaya ibhola odongeni.  
Masha endaweni eyodwa ngenkathi ushaya ibhola phansi.  
Manje gijima ugqome ibhola ube uzungeza.



Uthisha:

Sayina:

Usuku:



# Izikhathi zonyaka

Masifunde



## Ihlobo

Izulu liyabalela futhi lifudumale.

Izinsuku ziba zinde bese ubusuku buba bufushane.

## Ikwindla

Isimo sezulu siyaphola.

Amahlamvu ajika umbala abesagolide bese evuthuka ezihlahleni.

Izinyoni zindizela ezindaweni ezifudumele.



## Ubusika

Isimo sezulu siyabanda.

Kwezinye izindawo kuba neqhwa noma isithwathwa.

Izinsuku zibamfushane bese ubusuku buba bude.

Ezinye zezilwane ziyacasha ubusika bonke.

## Intwasahlobo

Isimo sezulu sifudumele.

Izitshalo ziqala ukukhula nezihlahla ziqala ukuqhakaza.

Izinyoni ziqala ukwakha izidleke nokubeka amaqanda.





### Masikhulume

Izinhlobo ezahlukahlukene zokudla zimila ngezikhathi ezahlukene zonyaka. Bheka lokhu kudla kwasehlobo nokwasebusika. Xoxela umgani wakho ukuthi uthanda ukudlani uma kushisa noma kubanda.



Utshisa: \_\_\_\_\_  
 Sayina: \_\_\_\_\_  
 Usuku: \_\_\_\_\_



20

# Ukugqokela isimo sezulu

IThemu 2 – ISonto 2 – Ikhasi Lokusebenzela



Masidwebe

Dweba umfana nentombazane. Umfana makagqoke izimpahla zobusika ezifudumele intombazane igqoke izimpahla zasehlobo ezipholile.



Umfana	Intombazane



Masiphumele ngaphandle

- Beka amashubhu ayizindingiliza phansi noma udwebe izindingiliza enhlabathini.
- Uma uthisha wakho ethi gxuma, gxumela ngaphakathi kwendingiliza ngezinyawo zombili.
- Uma uthisha wakho ethi gxuma, gxumela ngaphandle kwendingiliza ngonyawo olulodwa.
- Dlala u-gxa.
- Sebenzisa ushoki ukudweba izindingiliza nezikwele phansi.



40

Usuku:.....





Masicule

Xoxela umngani wakho ukuthi siqgoka izimpahla ezinjani ngesikhathi sonyaka ngasinye. Yiziphi izimpahla okhetha ukuziqgoka?

Dweba umugqa usuke encazelweni yezingubo esiziqgoka kulolo hlobo lwesimo sezulu, uya esithombeni sezingubo esihambisana nencazelo.

Bhala



## Ukuqgqokela isimo sezulu

Uma ilanga libalele kufanele sigqoke iziqgoko ukuzivikela elangeni.



Uma kushisa kufanele siqgoke izimpahla ezilula.



Uma kubanda emnyango kufanele sigqoke izimpahla zewuli ezifudumele.



Uma lina sidinga amajazi emvula nezambulela.



Uthisha:  
Sayina:  
Usuku:



# Imithelela yezikhathi zonyaka



Masifunde



## Intwasahlobo

Entwasahlobo imithi iqala ukuqhakaza.

Sibona izinyoni eziningi, izinyosi, izimbali kanye namaqabunga.

Izinyoni zakha izidleke zichamusele namaqanda.

Abalimi bagunda izimvu

## Ihlobo

Ehlobo abalimi bavuna izithelo. Amazinyane ezilwane ayatshakadula/ayqjabula.

Ezindaweni eziningi izulu lina kakhulu futhi liyaduma libe nemibani.

Utshani, amahlathi nezimbali kukhula masinyane kucinane, izihlahla zona zikhula zibe zinde.





## Ikwindla

Ezinye zezilwane zisebenza kakhulu ukuqoqa nokulondoloza ukudla zilungiselela ubusika.

Amahlamvu emithi aqala ukuba phuzi sagolide, abe nsundu, abebomvu noma abe sawolintshi.



## Ubusika

Ezinye zezilwane ziyalala bonke ubusika ezinye izilwane ziyalala bonke ubusika sithi ziyacasha. Ziyafudumala ngoba uboya bazo buyakhula .



Bhala

Zenzani ezinye zizilwane ebusika? \_\_\_\_\_

Zizivikela kanjani ezinye zizilwane emakhazeni ebusika? \_\_\_\_\_

Izinyoni zibuyela nini emazweni afudumele ziyokwakhela? \_\_\_\_\_



# 22

# Ukutshala ubhontshisi

Masenzi lokhu

## Udinga





- obhontshisi abayi-5
- isoso
- uvolo
- amanzi

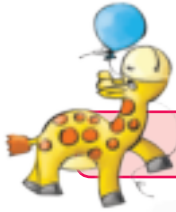


## Okufanele ukwenze

Beka ubhontshisi phezu kukavolo esosweni. Lokhu kugcine kumanzi bese ubeka isoso ewindini lapho kunokukhanya khona. Hlola ubhontshisi njalo amasonto aze abe mabili. Bheka ukuthi ukhula kanjani.

Bheka lesi sithombe sesithombo sikabhontshisi. Uma isithombo sakho sibukeka kanje, bhala usuku?

-----	-----	-----	-----
Usuku	Usuku	Usuku	Usuku
			



**Masenzeni lokhu**

Yenza umdlalo weshashalazi ngezilwane.

Ungakhombisa ibhele noma isinkwe siqoqa futhi silondoloza ukudla ebusika



**Masiphumele ngaphandle**



Ndiza njengelulwane uma lindizela endaweni efudumele.

Huquzela njengenyoka ifuna indawo efanele ukucashela ubusika.



Utshisa:  
Sayina:  
Usuku:





# 23

# Izilwane zasepulazini

IThemu 2 – ISonto 4 – Ikhasi Lokusebenzela



Masicule

Buka isithombe bese uxoxa ngezilwane zasepulazini ezahlukene ozibonayo.

Yisiphi isilwane osithanda kakhulu?

Yini esiyitholayo kulezi zilwane?





Bhala

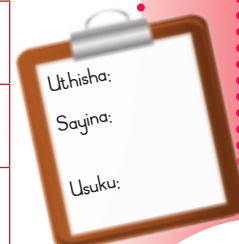
Faka izimpendulo ezifanele kulawa mathebhula.  
Sikwenzele isibonelo.

	Eyesilisa	Inqama
	Eyesifazone	Imvu noma imbuzi yensikazi
	Ingane	Imvana
	Umsindo	Be...e
	Indawo ehlala kuyo	Isibaya

	Eyesilisa	
	Eyesifazone	
	Ingane	
	Umsindo	
	Indawo ehlala kuyo	

	Eyesilisa	
	Eyesifazone	
	Ingane	
	Umsindo	
	Indawo ehlala kuyo	

	Eyesilisa	
	Eyesifazone	
	Ingane	
	Umsindo	
	Indawo ehlala kuyo	



# Epulazini



Masicule



Umkhulu uMadimadi unepulazi

Hi...i! Hi! Hi! Hi!

Epulazini lakhe ubenezinkomo

Mo...o mo...o mo...o mo...o laphaya

Mo...o mo...o mo...o mo...o yonke indawo

Umkhulu uMadimadi  
unepulazi

Hi...i! Hi! Hi! Hi!





**Masicule**

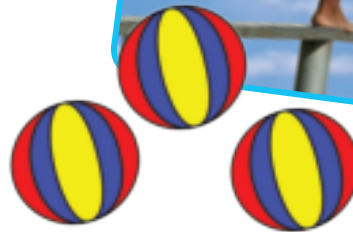
Qhubekani nokucula iculo sebenzisani lezi zilwane esikhundleni sezinkomo.

		<p>Epulazini lakhe ubenezinja.</p>
		<p>Epulazini lakhe ubenamadada.</p>
		<p>Epulazini lakhe ubenamahhashi.</p>



**Masiphumele ngaphandle**

- Hamba phezu kwensimbi ungabambeleli ndawo.
- Phosa ibhola emoyeni uphinde ulibambe ngaphandle ngokuthiliwe.
- Gxuma njengehhashi.
- Hamba njengedada.
- Hamba njengerobhothi

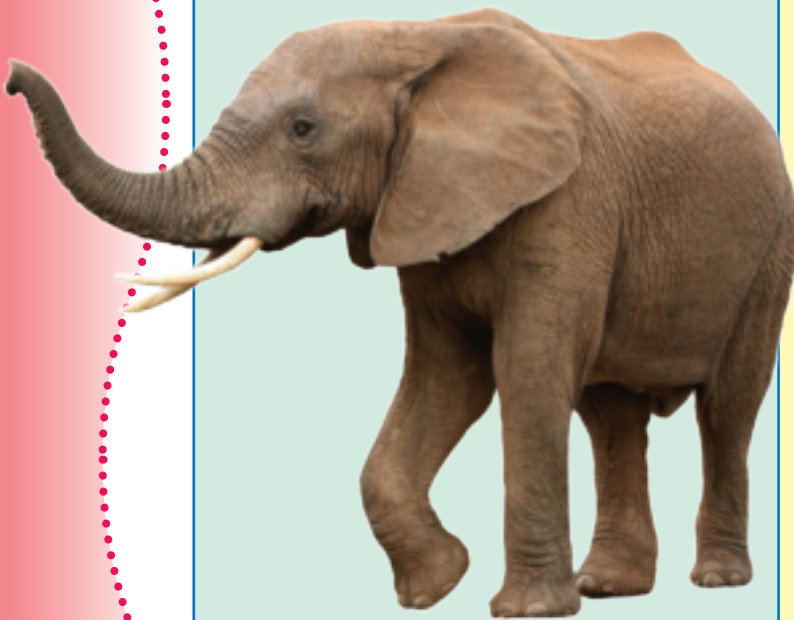




Masifunde



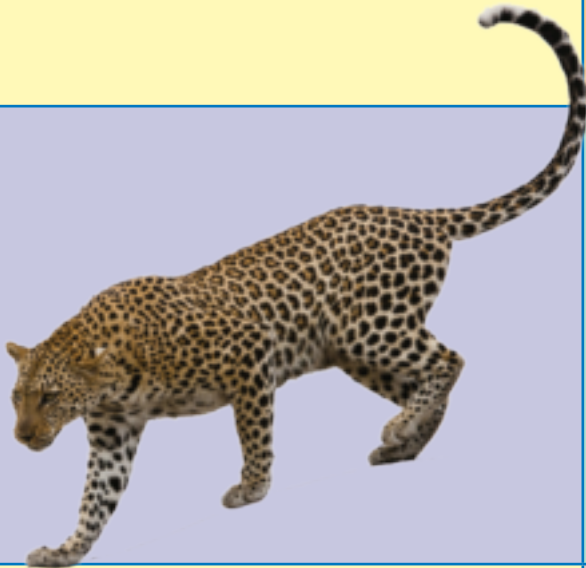
Amabhubesi awumndeni wamakati. Ibhubesi laziwa njengenkosi yezilwane. Amabhubesi azingela futhi abulale izilwane ezifana nezinyamazane kanye namadube. Amabhubesi ezinsikazi yiwona avame ukuzingela. Azingela ebusuku futhi ahamba ngamaqembu. Amabhubesi athanda ukuhlala ezigangeni ezinotshani. Amabhubesi abhonga kakhulu.



Izindlovu yizilwane ezinkulu ezweni. Zisengcupheni imihla ngemihla ngenxa yezigebengu ezifuna izimpondo. Imiboko yezindlovu ikhula impilo yazo yonke. Zikha ngayo izithelo futhi ziphuze ngayo amanzi. Zikwazi ukudla ukudla okuyisisindo esingamakhilogiremu angama-200 ngosuku ziphuze namanzi angamalitha ayi-190.



Kunezinhlobo ezimbili zikabhejane – kunobhejane omnyama kanye nomhlophe. Obhejane ababoni kahle, kodwa banemizwa yokunuka ebukhali. Obhejane babanzi futhi bangaba nesisindo samakhilogiremu ayi-2 500. Obhejane bavame ukuzingelwa yizigebengu ezifuna izimpondo zabo. Kufanele sibavikele obhejane ezigebengwini ezifuna izimpondo zabo.



Ingwe ekhulile ingakhula ize ibe ubude obungama mitha ama-2. Isikhumba sayo sinsundu sinamabala amnyama ayizindilinga. Ingwe iyakwazi ukugibela nokuzingela ezihlahleni.



Inyathi ihlala nemihlambi. Uma kuza ingozi, izinyathi namankonyane zibalekela phakathi komhlambi wezinkunzi. Ezinye izinyathi zikhula zize zifike ebudeni obuyi-1,7 m.



Uthisha:  
Sayina:  
Usuku:





Masifunde



Ezinye zezilwane zizivikekela ngokushintsha umbala ufane nalokho okuseduze kwazo.

Unwabu luyakwazi ukuzishintsha umbala ufane nezihlahla oluzigibelayo.

Imigqa yedube yenza kube nzima ukulibona ehlathini.

Izikhumba noma izimpaphe zezinye izilwane zenziwe ngendlela eyenza kube nzima ukuzibona.

Lokhu sikubiza ngokuzifihla.

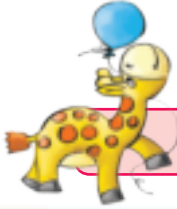
Cabanga ngezinye izilwane ezikwazi ukuzifihla.



Okokuzithokozisa

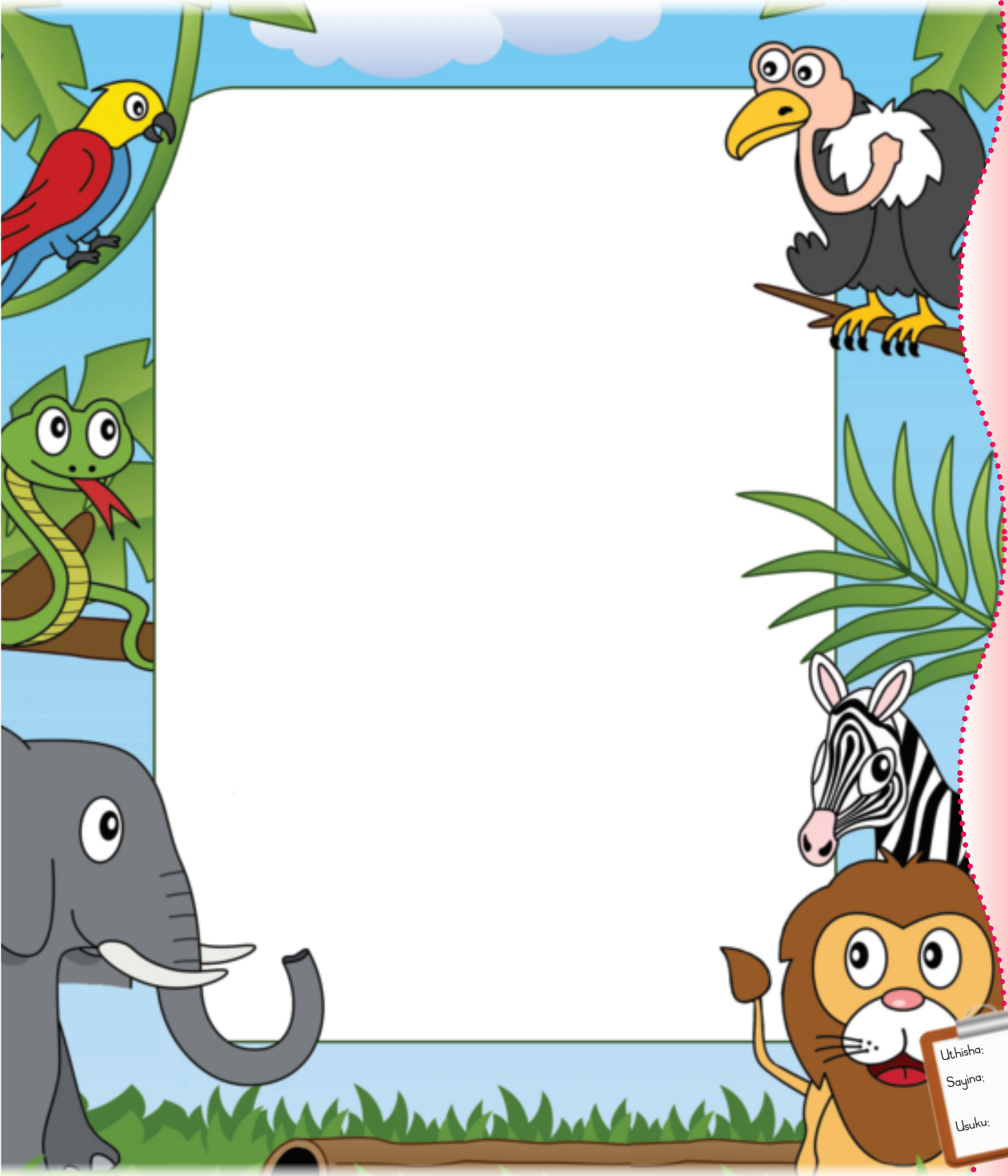
Uthisha wakho uzokufundisa ukudlala umdlalo wezihlalo zomculo.





Masenzeni lokhu

Dweba isilwane sasendle.  
Bese uxoxela umngani wakho ukuthi lesi silwane sizifihla kanjani.



Utshisa:  
Sayina:  
Usuku:



27

# Izilwane zasemanzini

IThemu 2 – ISonto 6 – Ikhasi Lokusebenzela



Masenzi lokhu

Qedela isithombe ngokufaka imidwebo noma izithombe zezilwane ezihlala emfuleni.





# Izilwane zasekujuleni kwamanzi

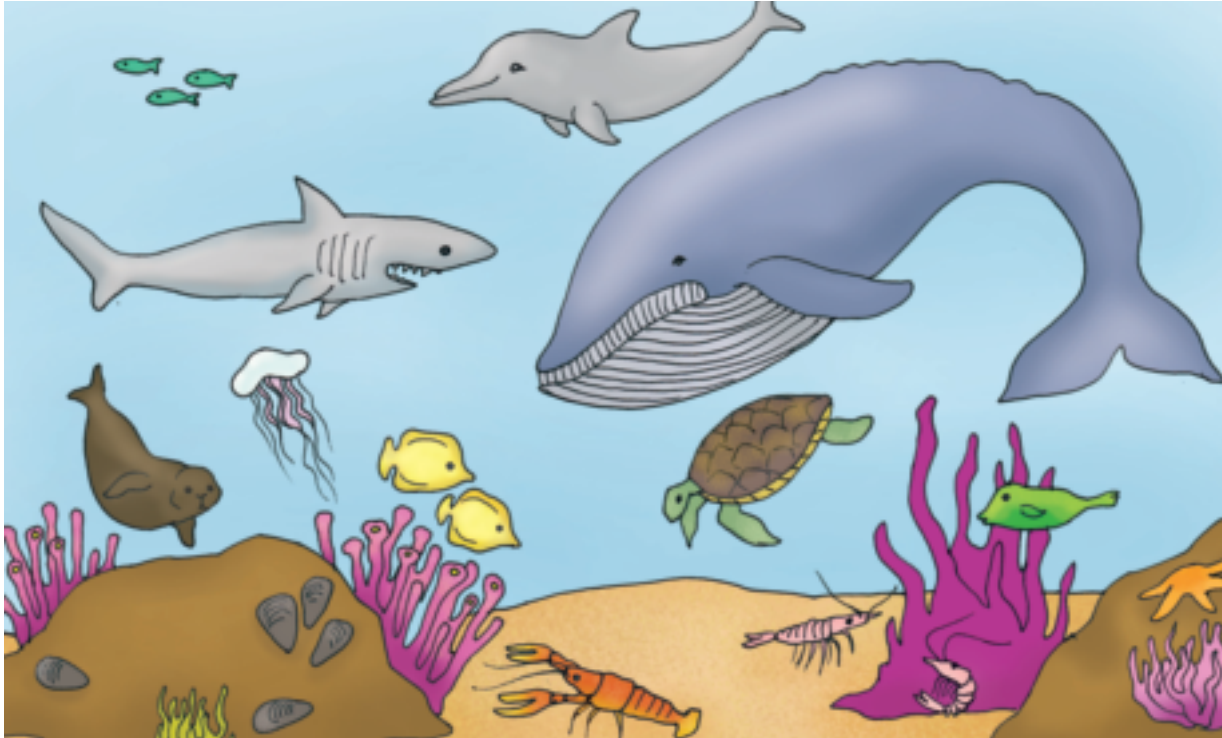


28

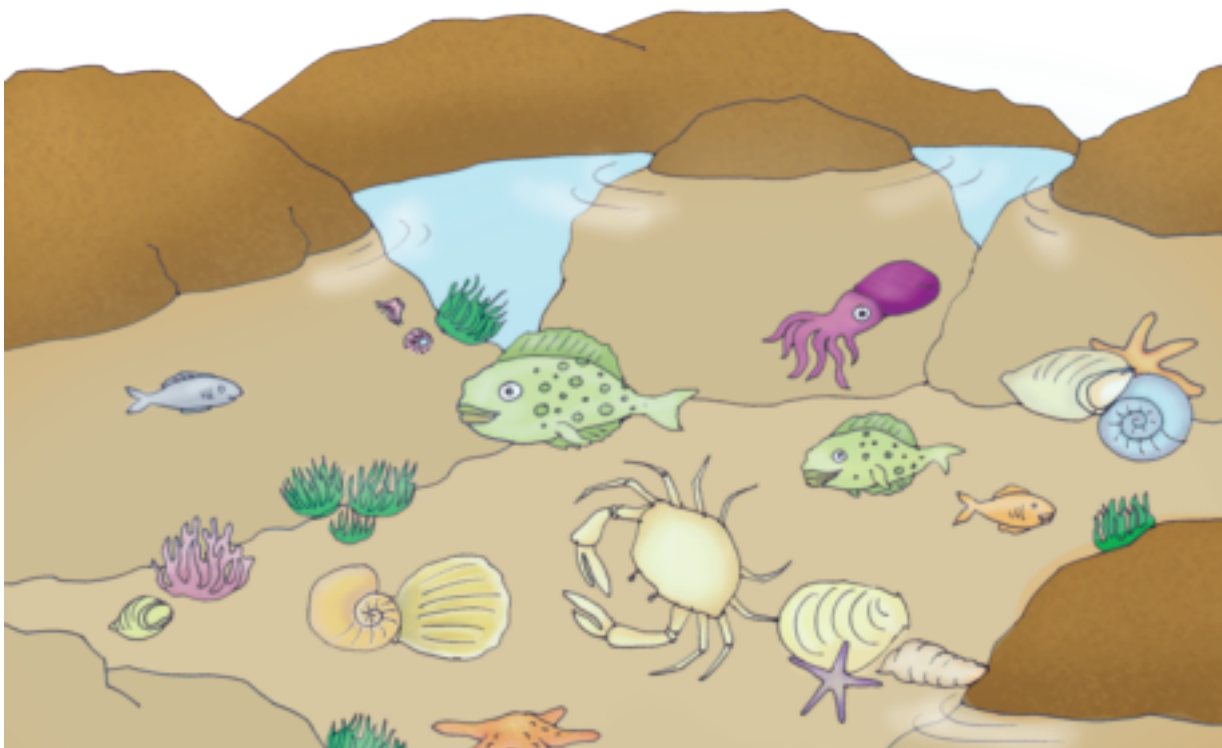


Masicule

Make sibheke zonke izilwane ezahlukahlukene ezihlala emanzini anosawoti.



Kunezinye futhi izilwane ezincane ezihlala, emadwaleni nasemanzini angajulile.



IThemu 2 – ISonto b – Ikhasi Lokusebenzela

Uthisha:  
Sayina:  
Usuku:





29

# Ulwazi ngezilwane zasemanzini

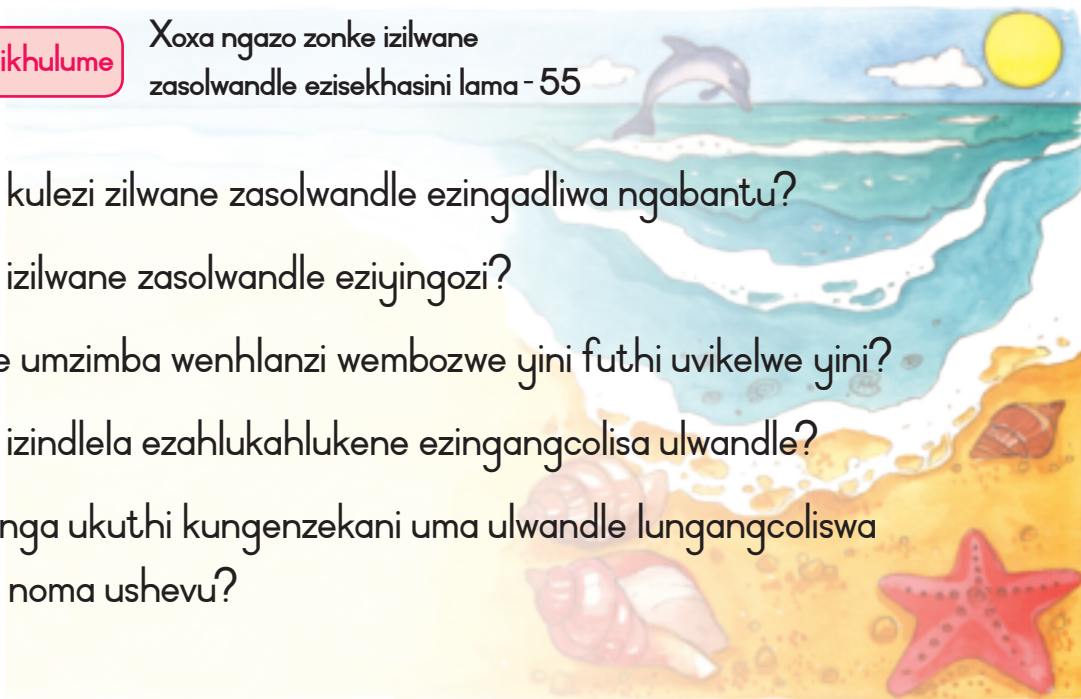
IThemu 2 – ISonto 7 – Ikhasi Lokusebenzela



Masikhulume

Xoxa ngazo zonke izilwane zasolwandle ezisekhasini lama - 55

- Yiziphi kulezi zilwane zasolwandle ezingadliwa ngabantu?
- Yiziphi izilwane zasolwandle eziyingozi?
- Ingabe umzimba wenhlanzi wembozwe yini futhi uvikelwe yini?
- Yiziphi izindlela ezahlukahlukene ezingangcolisa ulwandle?
- Ucabanga ukuthi kungenzekani uma ulwandle lungangcoliswa wudoti noma ushevu?



Bhala

Bhala amagama ezilwane ongazicabanga ezihlala emifuleni, emadamini noma olwandle kulamakholamu ethebula.

Umfula	Ulwandle	Idamu

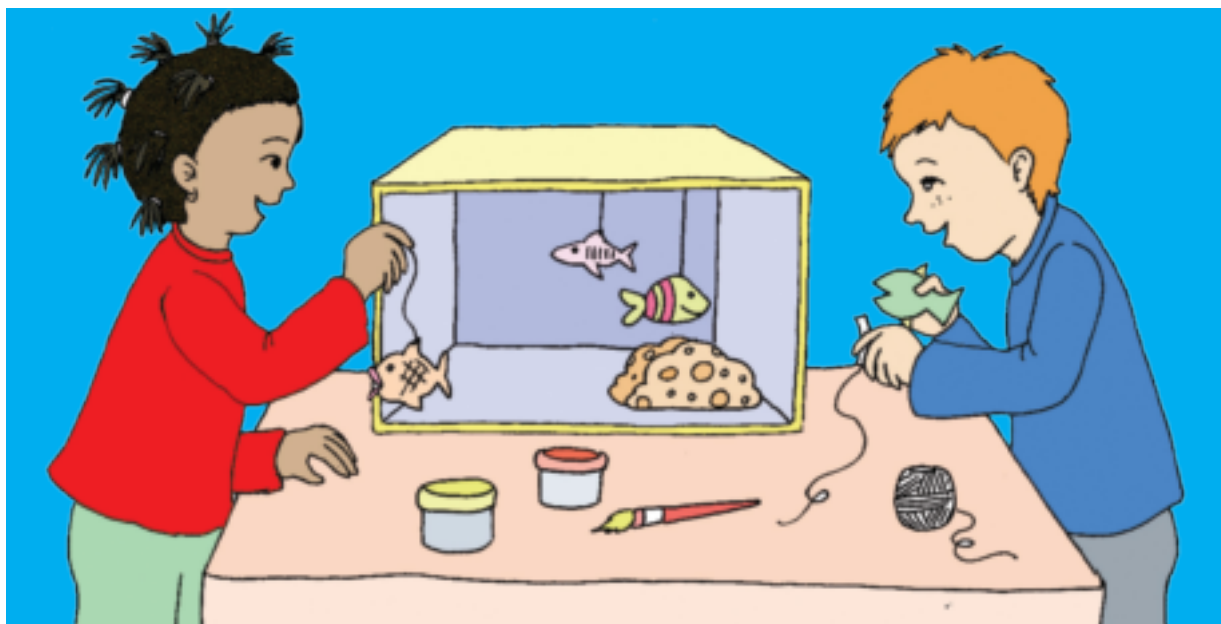




### Masenzi lokhu

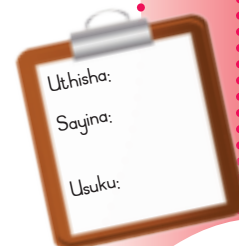
Ake uzenzele elakho ithange lezinhlazi.

- Penda ingaphakathi lebhokisi lesicathulo ngombala oluhlaza sasibhakabhaka noluhlaza satshani bese uliphendula ngohlangothi lalo.
- Bese usika isithombe senhlazi ngemuva kuleli bhuku.
- Namathisela ingaphezulu lebhokisi ngethephu enamathelayo kanye nentambo.



### Masiphumele ngaphandle

- Ndiza njengenyoni ngesivinini esisheshayo nesihamba kancane.
- Dadlazela njengehlengethwa.
- Ndiza njengenyosi.
- Hamba njengenkalkala.
- Bhukuda njengenzhlazi.
- Gxuma njengeselesele.
- Dlala umdlalo wokulandela umholi.
- Dlala umdlalo wekati negundane.



# Izilwane ezihamba nezindlu zazo



Masifunde



Uthi bewazi?  
Ngilingana kahle nje egobolondweni lami elincane. Alikaze libe lincane kimi

## Ufudu

Ufudu yisilwane esihquzelayo esinezinyawo ezine ezimaholoholo kanye nomqala oshwabene kanye nekhandla. Luhamba kancane negobolondo eliyindlu yalo emhlane.

Zihlala kuphi lezi zilwane?



Ufudu lwamanzi:  
Ngihlala olwande



Ufudu oluncane lwamanzi:  
Ngihlala emaxhaphozini



Ufudu:  
Ngihlala ezweni



Bhala

Phendula imibuzo elandelayo ngezimfudu ezihlala ezweni.

Ingabe igobolondo lofudu luqinile noma lithambile? \_\_\_\_\_

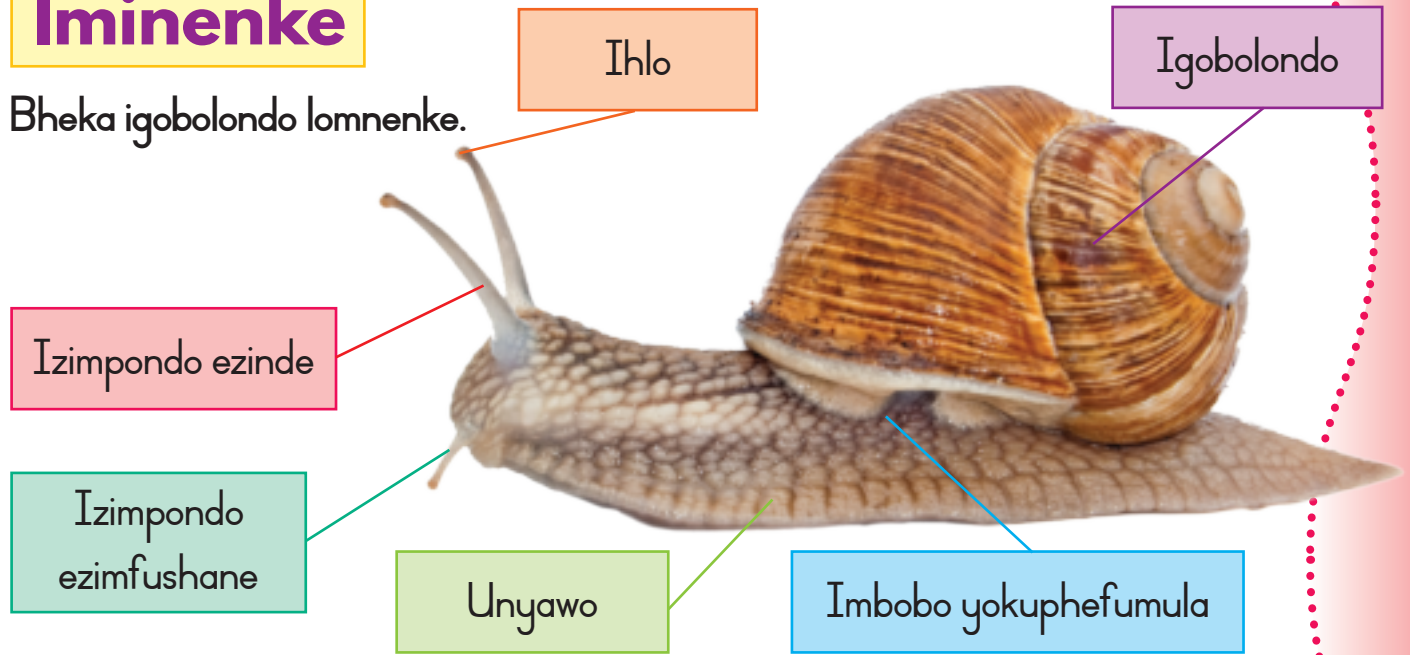
Ingabe igobolondo lofudu liluvikela kuziphi izinto? \_\_\_\_\_

Lwenzanjani ufudu uma lwethukile? \_\_\_\_\_

Zidla kudla kuni izimfudu? \_\_\_\_\_

# Iminenke

Bheka igobolondo lomnenke.

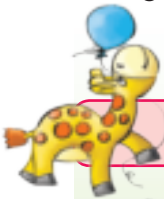


Uhamba kanjani umnenke? \_\_\_\_\_

Wake walithola igobolondo lomneke lingenalutho? Ucabanga ukuthi kusuke kwenzekeni ngomnenke? \_\_\_\_\_

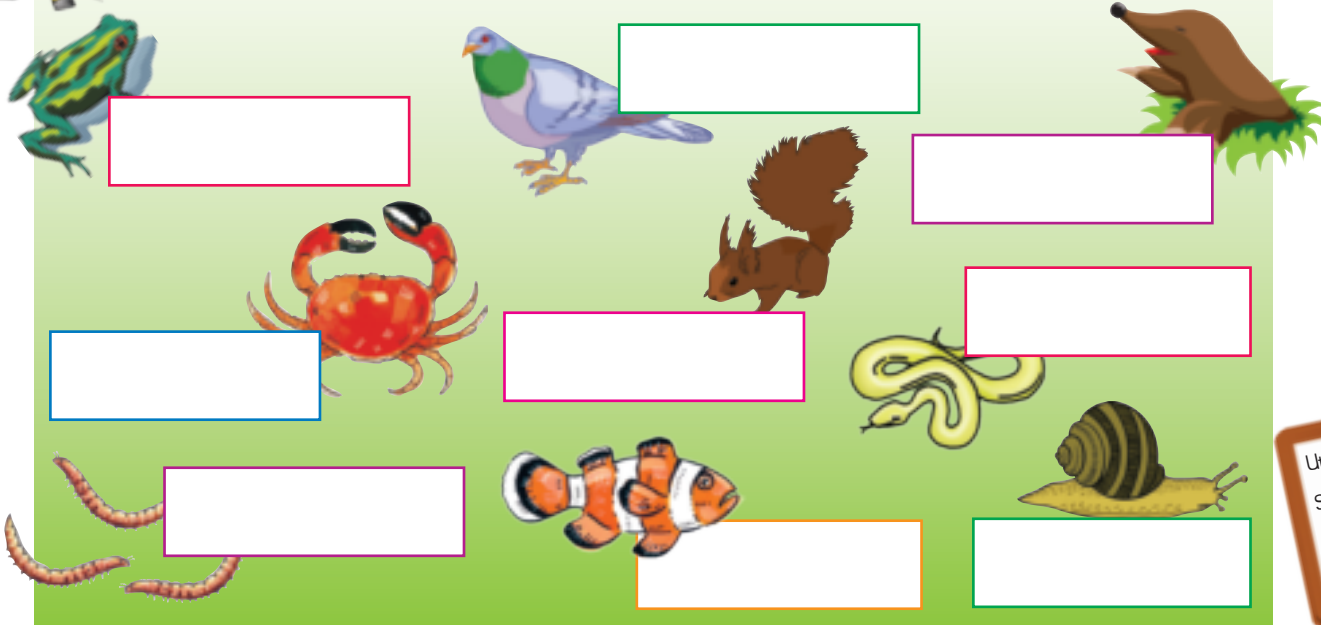
Ambala muni amagobolondo omnenke? \_\_\_\_\_

Kungani ucabanga ukuthi iminenke inamagobolondo? \_\_\_\_\_



**Bhala**

Ucabanga ukuthi ngihlala kuphi? Eduze kwesithombe sami, bhala ukuthi ngikwazi ukwenza ikhaya lami esihlahleni, emgodini noma emanzini.



Utshisa:  
Sayina:  
Usuku:

# Izilwane ezizakhela indawo yokuhlala



Masenzi lokhu

Hlanganisa izithombe zezilwane nezithombe zamakhaya azo.



Masifunde

## Izinyosi

Izinyosi zihlala ezidlekeni zazo.  
Zakha izidleke ngamafutha.  
Zibeka ukudla kwazo ezidlekeni.





## Izintuthwane

Izintuthwane zakha amakhaya okuhlala ahlukahlukene. Intuthwane encane iyakwazi ukuthwala into esisindo sayo siphindwe kane kuyo. Izintuthwane ziyakwazi ukuxhumana. Ziyaqwashisana uma kunengozi. Ziyatshelana futhi ukuthi ukudla kutholakalaphi.



Bhala

Ucabanga ukuthi kungani izintuthwane zizakhela izindawo zokuhlala?

---

Ubani isitha sentuthwane?

---

Zisebenzisani izintuthwane uma zakha indawo yokuhlala?

---



Masifunde

## Izinyoni

Izinyoni zakha izidleke njengezindawo zokuhlala nezokuzalela amaqanda. Ubukhulu besidleke buncika ekuthini ingakanani inyoni. Zisebenzisani izinyoni uma zakha isidleke?

---

Yisiphi isilwane esiyisitha senyoni?

---



Utshisa:  
Sayina:  
Usuku:





Isichazamazwi sami

**A**

a

**M**

m

**B**

b

**N**

n

**C**

c

**O**

o

**D**

d

**P**

p

**E**

e

**Q**

q

**F**

f

**R**

r

**G**

g

**S**

s

**H**

h

**T**

t

**I**

i

**U**

u

**J**

j

**V**

v

**K**

k

**W**

w

**L**

l

**X-Z**

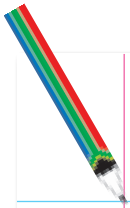
x-z





A large rectangular area containing a vertical red margin line on the left and horizontal blue ruling lines for writing.

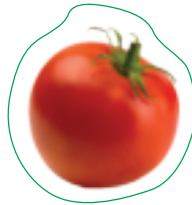
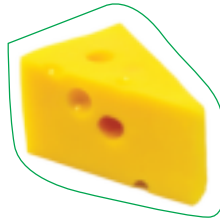
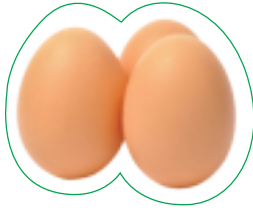
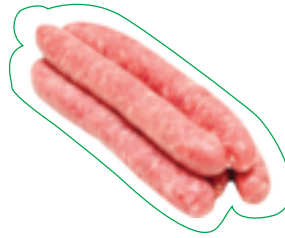
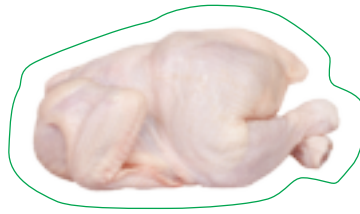




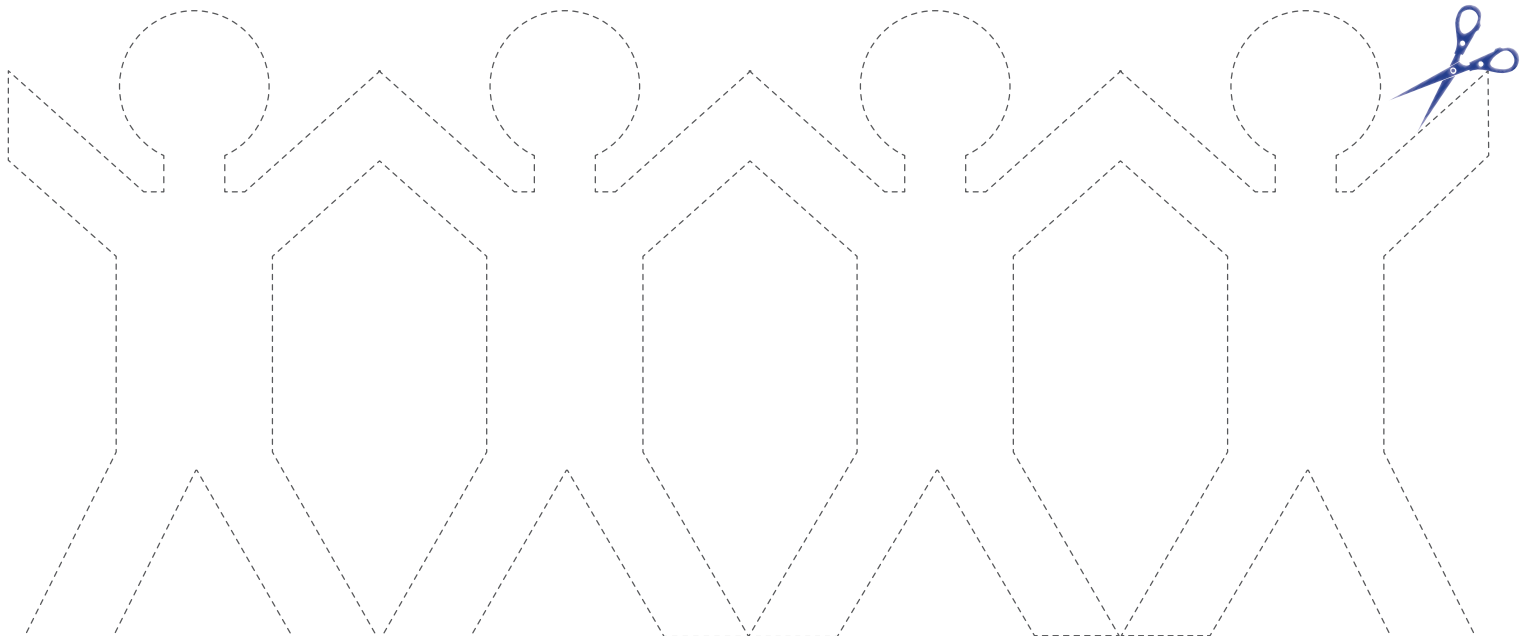
A large rectangular writing area with a vertical red margin line on the left and horizontal blue lines for writing. The page is otherwise blank.



P.29

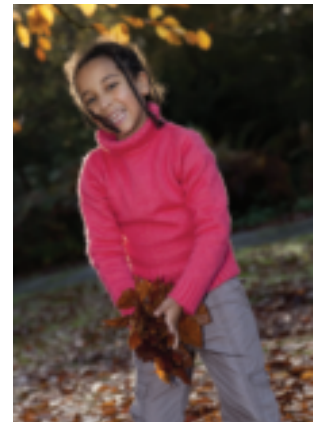
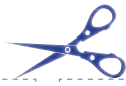


P.19





P.36-37



P.57

