

# OKUDINGA UKWENZIWA YINTSHA yaseNingizimu Afrika

<b>Ukulingana</b> Phatha bonke abantu ngokufanayo nangokwamukelekayo. Ungacwasi. 	<b>Isithunzi somuntu</b> Hlonipha wonke umuntu. Yiba nomusa ube nokunakekela. 	<b>Impilo</b> Impilo yonke ibalulekile. Hlonipha yonke into ephilayo. 
<b>Umndeni</b> Hlonipha abazali. Yiba nomusa wethembeke emalungwini omndeni. 	<b>Imfundo</b> Ngena isikole, usebenze kanzima ekufundeni kwakho. Hlonipha imithetho yesikole. 	<b>Ukusebenza</b> Siza umndeni emisebenzini eyenziwa ekhaya. Abantwana mabangaphoqelelwa ukuthola umsebenzi. 
<b>Inkululeko nokuphepha</b> Ungalimazi, ungahluphi noma wesabise abanye abantu. Ungabavumeli nabanye abantu ukuthi bakwenze lokhu. Xazulula izinkinga zokungaboni ngaso linye ngendlela enokuzithoba. 	<b>Impahla</b> Hlonipha impahla yabanye abantu. Vikela impahla yomuntu noma yomphakathi. Ungantshontshi. 	<b>Inkolo, ukukholwa nemibono</b> Hlonipha inkolo nemibono yabanye abantu. 
<b>Ukuphepha</b> Vikela umhlaba. Ungalimazi amanzi nogesi. Vikela izilwane nezitshalo. Qiniseka ukuthi izikole namakhaya enu kuhlanzekile. 	<b>Ubuzwe</b> Yiba yisakhhamuzi saseNingizimu Afrika esethembekile. Hlonipha imithetho, uqiniseke ukuthi nabanye abantu benza kanjalo. 	<b>Ukukhululeka kokukhuluma</b> Ungaqhubekisi amanga nenzondo. Qiniseka ukuthi abanye abantu abedelelwa, abalinyazwa imizwa yabo. 



ISIZULU HOME LANGUAGE  
**GRADE 2 – BOOK 2**  
 TERMS 3 & 4  
 ISBN 978-1-4315-0062-8  
 THIS BOOK MAY NOT BE SOLD.  
**14th Edition**

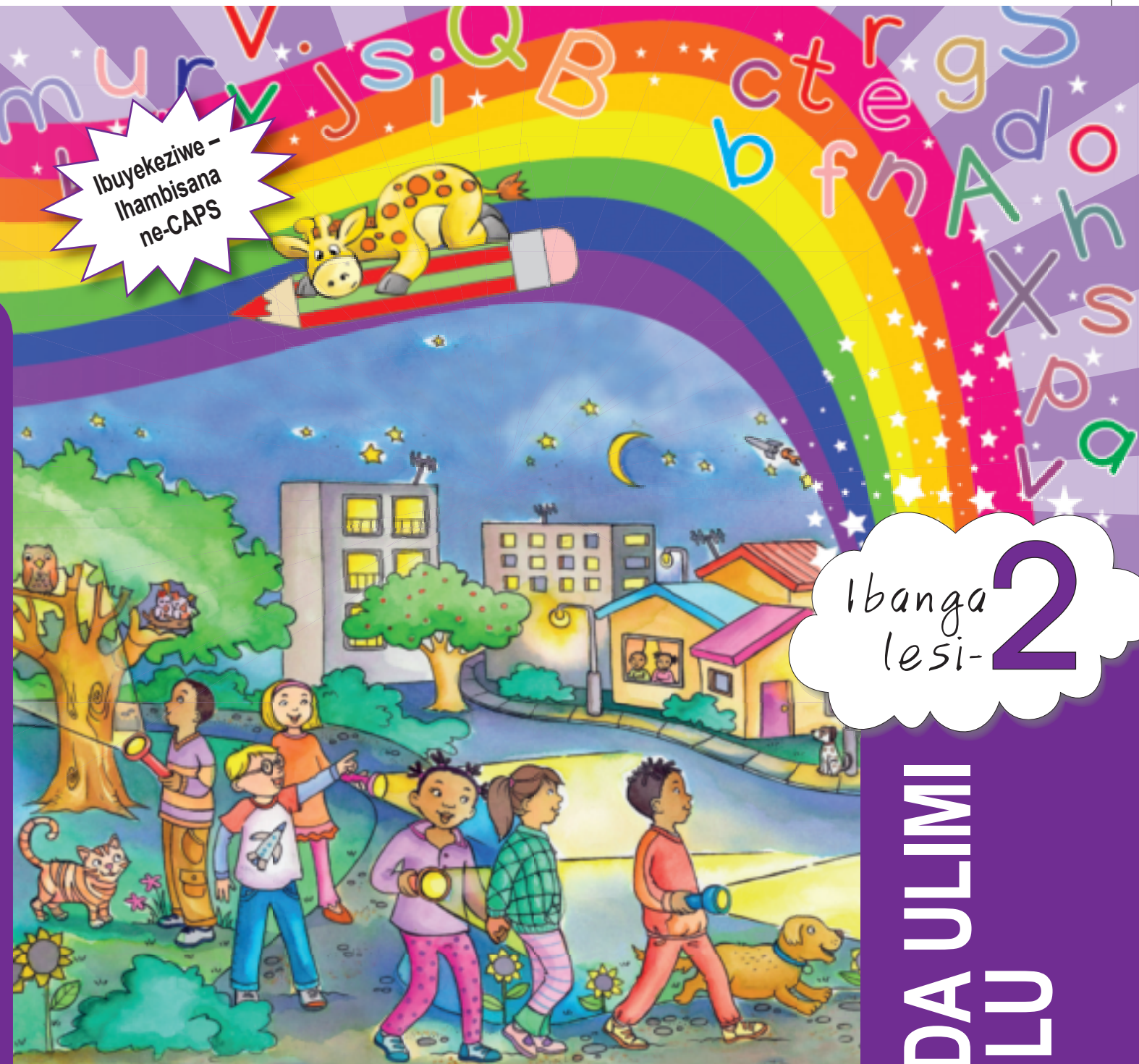
Workbooks available in this series:

- Grade R (in all official Languages);
- Literacy/Home Language Grades 1 to 6 (in all 11 official Languages);
- Mathematics Grades 1 to 3 (in all 11 official Languages);
- Mathematics Grades 4 to 9 (in Afrikaans and English);
- Life Skills Grades 1 to 3 (in all 11 official Languages); and
- Grades 1 to 6 English First Additional Language.

UKUFUNDA ULIMI NGESIZULU – Ibanga lesi-2 Incwadi yesi-2

ISBN 978-1-4315-0062-8

Ibuyekeziwe –  
 Ihambisana  
 ne-CAPS



Ibanga  
 lesi-2

Igama:

Iklasi:



basic education  
 Department:  
 Basic Education  
 REPUBLIC OF SOUTH AFRICA

UKUFUNDA ULIMI  
 NGESIZULU

Incwadi  
 yesi-2  
 Ithemu 3 & 4



UNK Angie Motshekga,  
uNgqongqoshe weMfundo  
Eyisisekelo



UDkt Reginah Mhaule,  
iSekela loMnyango  
weMfundo Eyisisekelo

Lezi zincwadi zokusebenzela zenzelwe abantwana baseNingizimu Afrika ngaphansi kwesandla sikaNgqongqoshe weMfundo Eyisisekelo, uNk Angie Motshekga, neSekela likaNgqongqoshe weMfundo Eyisisekelo, uDkt Reginah Mhaule.

Lezi zincwadi ezibizwa ngeRainbow Workbooks ziyingxenye yoMnyango weMfundo Eyisisekelo lapho uMnyango uzama khona ukungenelela ukuze kuthuthukiswe imfundo yabantwana bamabanga asuka kwelokuqala kuya kwelesithupha eNingizimu Afrika. UMnyango weZimali uxhase lo mkhankaso kaHulumeni njengento yokuqala uHulumeni azibekele yona ukuthi ayisukumele. Uxhaso loMnyango weZimali lusize uMnyango wezeMfundo ukuthi ukwazi ukukhiqiza uphinde usabalalise ngaphandle kwenkokhelo lezi zincwadi zokusebenzela ngazo zonke izilimi zaseNingizimu Afrika ezisemthethweni.

Sinethemba lokuthi othisha bazozithanda basebenze kangcono ngazo lezi zincwadi ekufundiseni kwabo kwansuku zonke, baphinde bathole futhi isiqiniseko sokuthi abafundi babo bafundiswa konke abamelwe ukufundiswa khona njengoba kuvela kusilabhasi yabo. Sizamile ukuqiniseka ukuthi sifaka izithonjana (ama-icon) emisebenzini yokwenziwa ukuze uthisha akuthole kulula ukuyilandela nokuqonda ukuthi umfundi yini alindeleke ukuyenza.

Sinethemba futhi lokuthi abantwana uqobo lwabo bazokujabulela ukusebenzisa lezi zincwadi ekukhuleni kwabo bakhule nolwazi ezilukukethe, bese kuthi wena njengothisha wabo uthokoze kanye nabo ekugcineni.

Sifisela wena nomfundi omfundisayo impumelelo ngenkathi usebenzisa lezi zincwadi.

## Uma kufundwa umbhalo

### Ngaphambi kokufunda



- Zama ukukhumbula izinto ozaziyo ngesihloko.
- Cabanga ngombhali kanye nesikhathi incwadi eshicilelwe ngaso.
- Funda ipharagrafu yokuqala neyokugcina yengxenye yokuqala.
- Zama ukuqagela ukuthi umbhalo lowo uzokhuluma ngani.



### Ukufunda



- Ngenkathi ufunda, thatha ikhefana njalo nje ukuziqinisekisa ukuthi uyakuqonda okufundayo.
- Qhathanisa ukuqagela kwakho nalokho okuthola uma ufunda.
- Uma ungayazi incazelo yamanye amagama, yifune esichazamazwini.
- Uma kunengxenye ongayizwa, yifunde futhi kancane kancane. Phinda uyifunde uphimisele.



### Emva kokufunda



- Zama ukukhumbula izinto ezibalulekile.
- Yenza ibalazwe lemibono eqavile.
- Bhala isifinyezo ukuzikhumbuza amaphuzu abalulekile.
- Sebenzisa amaphuzu owatholile uwabhale wena phansi.



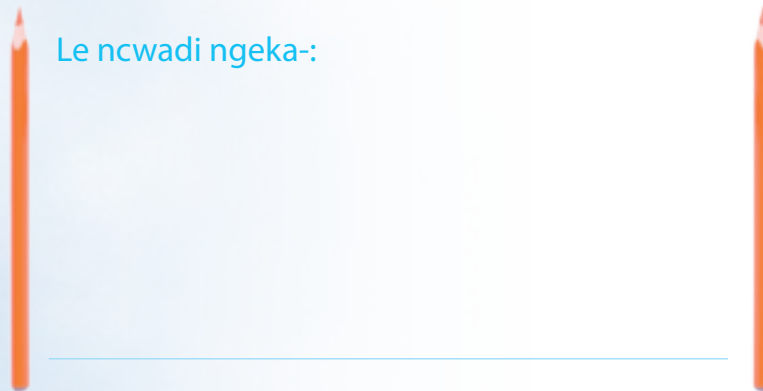
Ibanga  
lesi-2



NGESIZULU



Le ncwadi ngeka-:



ISIZULU

Incwadi  
yesi-

2

# UMHLAHLANDLELA KATHISHA - IBANGA LESI-2 ULIMI

Sebenzisa le ncwadi kanye nezinye ukukhulisa abafundi bakho ngalokhu:

- Ukusetshenziswa kwezincwadi: Indlela yokuvula kahle amakhasi uze uyophumela ngale kwencwadi.
- Ukuma kwencwadi: Ikhasi langaphambili, elangemuva, isihloko kanye nokuqokethwe.
- Umkhombandlela: ukufunda usuke ekuqaleni uye ekugcineni, ukuqala kwesokunxele uye kwesokudla kanye nokuqala phezulu uye phansi.

## AMASU OKUFUNDISA

### Ukulalela nokukhuluma

Funda ngalokhu encwadini *iCurriculum and Assessment Policy Statement (isiZulu Ulimi Lwasekhaya)*, ikhasi 10.

Abafundi kumele babe nezindaba abazifundayo, imilozelo emifushane, izinkondlo namaculo, masonto wonke.

### Ingxoxo ngezithombe

1. Siza abafundi kulokhu:
  - Ukuthola nokuxoxa ngezinto ezisezithombeni (usayizi, isimo, umbala nenani)
  - Ukuqonda izithombe ngokubuza imibuzo ethi: ngubani, yini, ikuphi, nini, ngani, kwenzekeni ngaphambilini, kwase kwenzekani kamuva?
  - Ukwenza indaba yasekilasini (ubude bulingane nezinga lokuthuthuka asebekulo abafundi)
2. Vumela abafundi baxoxe umngani indaba yasekilasini.
3. Khombisa ukubhalwa kwendaba yasekilasini (I-CAPS Olimini Lwasekhaya, ikhasi 12, ukufunda ngokuhlanganyela). Vezela abafundi njalo nje ukusetshenziswa kofeleba, ukhulukaniswa kwamagama kanye nokusetshenziswa kwezimpawu.
4. Vumela abafundi bafunde kanye nawe indaba yaseklasini.
5. Cela abafundi badwebele noma bakokezelele imisindo, amagama amasha noma ulimi nokusebenza kwalo endabeni yasekilasini kulelo sonto.

### Ukufunda

Bhekisa encwadini *iCurriculum and Assessment Policy Statement (isiZulu Ulimi Lwasekhaya)*, ikhasi 12-18, mayelana nezinto ezinhlano ezibalulekile ekufundiseni ukufunda umbhalo.

### Ukubhala

Bhekisisa encwadini *iCurriculum and Assessment Policy Statement (isiZulu Ulimi Lwasekhaya)*, ikhasi 18-19, mayelana nokubhala ngesandla kanye nokubhala ngokujwayelekile.

Gcizelela lokhu nsuku zonke:

- ukusebenzisa ngokuyikho amakhilayoni namapensela
- umkhombandlela: ukubhala usuke kwesokunxele uye kwesokudla, nokuqala phezulu wehle
- Ukusebenzisa amabhokisi alandelanayo ukukhombisa ukwakhiwa kwezinhlamvu kanye nenkombandlela

### Uhlale ukukhumbula lokhu:

- Izindlela abafunda ngazo abafundi kazifani. Kubalulekile ukuthi umfundi asizwe ngezinsizakubona, ngokulaleliswa kanye nangokusebenzisa ulwazi analo ukuze afunde ngokukhululeka.
- Ukufunda kwenzeka kahle uma izinto ziphindaphindwa.
- Abafundi kumele bafundiswe, ngakho imisebenzi yokwenziwa kumele bazijwayeze yona ngaphambi kokuthi bayibhale, isb.:

Amagama amasha: Nikeza abafundi ithuba lokwakha amagama besebenzisa amakhadi.

Ukuqonda: Abafundi kumele baqedele izimpindulo ngomlomo emaqenjini abo ngaphambi kokuzibhala. Umholi weqembu ubuza imibuzo, bese kuthi amalunga eqembu athole izimpindulo bese eyiphendula imibuzo.

Ukukhetha amagama okuqedela imisho. Nikeza amaqembu imisebenzi engaqedelwe yokubhalwa kanye namakhadi alungiselelwe amagama. Abafundi mabaqedele imisho ngokubhala amagama emakhadini ngendlela efanele.

Ukuqondanisa amagama nezithombe (ikhasi 17): Khulisa ikhasi libe wusayizi we-A3. Emaqenjini abafundi, kumele abafundi babeke izimpawu ezifanele ezimpindulweni ezifanele.

Ukuqondanisa izingxenywe ezimbili zomusho (ikhasi 84): Emaqenjini abafundi, kumele abafundi baqondanise izingxenywe zemisho.

Ukubhala eyakho indaba yephephandaba (ikhasi 128): Nikeza abafundi ithuba lokubhala indaba ekilasini, kulandele ukuthi ibhalwe yiqembu ngaphambi kokuthi bayibhale ngamunye ngamunye.

Izichazamazwi: Sebenzisa izichazamazwi nsuku zonke. Yikhono lomfundi ngamunye eliveza ukuthi umsebenzi ulukhuni kangakanani. Kungadingeka nokuthi ubanike amakhasi kweminye imisebenzi abayenzayo.

Qaphela lokhu: Ngenkathi besebenza ngamaqembu, nika umholi weqembu izimpindulo ukuze akwazi ukusiza ngazo amalunga eqembu lakhe ngendlela efanele.



O  
k  
u  
q  
u  
k  
e  
t  
h  
w  
e

## Indikimba 5: Esikwenze ngamaholidi

Ithemu 3: Amasonto 1 - 4

### 65 Emva kwamaholidi 2

Ufunda indaba.  
Uphendula imibuzo emayelana  
nendaba.  
Imisindo: qw, sw, tw, xw.  
Ubhala imisho.  
Ubhala isigaba mayelana namaholidi.

### 66 Esikwenze ngamaholidi 4

Ugcwalisa izehlakalo ekhalendeni.  
Uphendula imibuzo mayelana  
nekhalenda.  
Uthola izabizwana ezifanele.

### 67 UBongi ubeye emcimbini wosuku lokuzalwa 6

Ufunda indaba.  
Uphendula imibuzo eminingi  
ekhethisayo mayelana nendaba.  
Imisindo: gc, gx, gq, ts.  
Ubhala imisho.

### 68 Izinsuku ezibalulekile, imilayezo ebalulekile 8

Ulandelanisa izithombe  
ngokwendaba.  
Ubhala umusho ngesithombe  
ngasinye.  
Ubhala umlayezo obalulekile  
encwadini yomngani.  
Uhlela amagama ngokufanele  
emabhokisini emisindo.  
Imisindo: qw, sw, tw, xw.

### 69 UJabu ubeye ezu 10

Ufunda itekisi elixoxa ngoJabu eya  
ezu.  
Uphendula imibuzo ebhekiswe  
etekisini.  
Imisindo: gc, gx, gq, ts.  
Ubhala isigaba ngokwenzeke ezu.

### 70 Siyazithanda izilwane 12

Imisindo: Uhlela amagama  
ngamabhokisi emisindo (amalunga  
ano-i o no-e i)  
Ubhala imisho emi-5 mayelana  
nezilwane zasezu.  
Ufundela umngani imisho.  
Uthola amagama aphikisanayo.  
Ukudlala: Ufaka umbala esithombeni  
elandela ikhodi yemibala.

### 71 UBebe ubeye esikhumulweni sezindiza 14

Ufunda indaba ngoBebe  
esesikhumulweni sezindiza.  
Uphendula imibuzo emayelana  
nendaba.  
Imisindo: qw, sw, tw, xw, zw.  
Ubhala imisho esebenzisa amagama  
awanikeziwe.  
Ubhala isigaba ngohambo  
olubalulekile.

### 72 Izindiza 16

Uqondanisa inkathi yamanje nedlule  
emagameni.  
Usebenzisa izinhlamvu ze-alfabethi  
ngokulandelana ukuqedela  
umdwebo wesithombe.

### 73 UNomsa ubeye emsebenzini nonina 18

Ufunda indaba elixoxa ngoNomsa  
nonina.  
Uphendula imibuzo eminingi  
ekhethisayo mayelana nendaba.  
Imisindo: gc, gx, gq, ts.

### 74 Sikhathi sini? 20

Udweba izinti zewashi ukukhombisa  
izikhathi azinikeziwe.  
Ubhala izinto abazenze ngezikhathi  
ezithile.  
Unikeza ubuningi kanye nobunye  
bamagama.  
Wenza iphosta emayelana  
nokuzothengiswa.

### 75 UCebo ubeye emtatsheni wezincwadi 22

Ufunda indaba exoxa ngoCebo eya  
emtatsheni wezincwadi.  
Uthola amagama afanele ukuqedela  
imisho emayelana nendaba.  
Ubhala imisho esebenzisa amagama  
awanikiwe.  
Ubhala imisho esebenzisa amagama  
awanikeziwe.  
Imisindo: ny, ng, hl, th.

### 76 Izincwadi emtatsheni wezincwadi wangakithi 24

Udweba isithombe sencwadi  
abayithandle.  
Ubhala ngencwadi ethile.  
Uqondanisa inkathi edlule  
neyamanje.  
Uthola amagama aveza inkathi  
yamanje noma edlule ngokufanele  
emishweni.  
Uqagela esusela emakhaveni  
ezincwadi awanikiwe.

### 77 UThabo uya emdlalweni webhola lezinyawo 26

Ufunda indaba.  
Uxoxa ngokuqagela indaba.  
Ufunda indaba exoxa ngoThabo.  
Ubhala isihloko sesithombe ngasinye.  
Ugcwalisa amagama emabhokisini  
emisindo afanele.  
Ubhala umusho ngesithombe  
ngasinye.  
Imisindo: ndl, nhl.

### 78 Umdlalo webhola lezinyawo 28

Uhlela amagama ngamabhokisi  
afanele emisindo u e, u i.  
Uthola inkathi edlule ngokufanele.  
Udlala umdlalo wamagama.

### 79 Ichwane elibi ledada 30

Uxoxa ngezithombe ezisendabeni  
yamakhathuni.  
Ufunda indaba exoxa ngechwane  
elibi ledada.

### 80 Ichwane elibi ledada (iyaqhutshwa) 32

Ufunda indaba exoxa ngechwane  
elibi ledada.  
Uxoxa ngezithombe ezisendabeni.

### 80a Ichwane elibi ledada (iyaqhutshwa) 34

Ufunda indaba exoxa ngechwane  
elibi ledada.  
Uxoxa ngezithombe ezisendabeni.





Masifunde

Namhlanje sibuyele esikoleni emva kwamaholidi.

Sijabulile ukubona abangani bethu futhi.

Uthisha ucele simxoxele ukuthi kwenzekeni ngamaholidi.

Simkhombise izithombe zeholidi lethu.

Sazidlulisa sinikezelana omunye nomunye.



UJabu ubeye ezu.



UCebo ubeye emtatsheni wezincwadi.



UThabo ubeye eSoccer City.



UBebe ubeye esikhumulweni sezindiza.



UBongi ubeye emcimbini wosuku lokuzalwa.



UNomsa ubeye emsebenzini kanina.




Masibhale

Gcwalisa igama lomntwana ngamunye.  
Manje bhala ukuthi baye baya kuphi noma benzeni ngeholidi labo.

UJimi ubeye kwadokotela.



Igama	UBongi 			
Indawo	Umcimbi wosuku lokuzalwa			

Igama			
Indawo			



Sisebenza ngamagama

Funda la magama ulalele imisindo.  
Manje bhala imisho yakho emibili encwadini yakho yokubhalela.

uqweqwe	swaca	itwetwe	xwayisa
qwa	uswazi	twetwa	xwaya
qwaqwada	swela	utwayi	isixwayiso

**Amagama okubhekisiswa**  
bethu  
futhi  
ukubona



Masibhale

Bhala imisho emibili usho ukuthi wenzeni ngeholidi lakho.




---



---



---



---



---

# Esikwenze ngamaholidi



## Masenze lokhu

Buka lezi zinto ezenzekile ezibalulekile.  
Gcwalisa ikhalenda ngazo.

Usuku lokuzalwa lukaJabu lumhla zingama -25 kuNtulikazi.

Usuku lokuzalwa lukaMimi lumhla zi-3 kuNtulikazi.

UCebo kufanele abuyisele incwadi yakhe emtatsheni wezincwadi mhla ziyisi-5 kuNtulikazi.

UThabo uzoya ebholeni lezinyawo mhla ziyi -13 kuNtulikazi.

UBebe kufanele aye kwadokotela mhla zingama-18 kuNtulikazi.

UBongi uzoya ezu mhla zingama -21 kuNtulikazi.

UMimi uzovakashela ugogo wakhe mhla zingama-28 kuNtulikazi.

UBongi uzovakashela uMimi mhla ziyi -13 kuNtulikazi.



## uNtulikazi

uMsombuluko	uLwesibili	uLwesithathu	uLwesine
1	2	3 Usuku lukaMimi lokuzalwa	4
8	9	10	11
15	16	17	18
22	23	24	25
29	30	31	



## Masibhale

Phendula le mibuzo ngekhalenda.

Ngeyayiphi inyanga le khalenda?	
Zingaki izinsuku kule nyanga?	
Umhla zingama-25 ukuluphi usuku?	
Mangaki amaSonto akhona kule nyanga?	
Iyiphi inyanga efika kuqala kunalena, iyiphi futhi efika kamuva?	



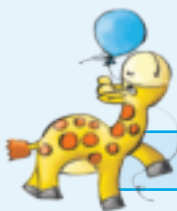
Masibhale

Funda le misho ngamunye, ukokelezele igama ongalisebenzisa endaweni yaleli elidwetshelwe.

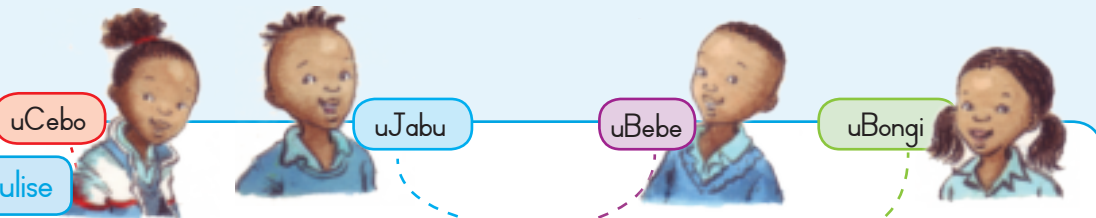
Wena, yena  
bona, zona, kona;  
yizabizwana esiyaye  
sizisebenzise  
esikhundleni  
samanye amagama.

<u>UBongi</u> uthanda ukudlala noNomsa.	Wena	Yena	Yona
<u>UJabu</u> uthanda ukuya ezu.	Wena	Yena	Yona
<u>UCebo</u> uthanda ukufunda izincwadi.	Wena	Yena	Yona
<u>UBebe</u> ubone indiza.	Wena	Yena	Yona
<u>UCebo noBongi</u> bangamantombazana.	Bona	Yena	Yona

uLwesihlanu	uMgqibelo	iSonto
5	6	7
12	13	14
19	20	21
26	27	28



Masizijabulise



Landela amachashazi ukubona ukuthi benzeni ngamaholidi abo.





Masifunde

Ngamaholidi kaNtulikazi uBongi ubeye **emcimbini** wokuzalwa kukaNana.

Bekunamantombazana nabafana abaningi emcimbini.

UNana uthole amathoyisi amaningi ngoba bekuwusuku lwakhe lokuzalwa. Besijabulile.



UNana uphephethe amakhandlela ayisishiyagalombili, **sasesidla** amaswidi nekhekhe.

Ngaphambi kokubuyela ekhaya sibilise amanzi senza itiye.

Sonke siye sadlala ibhola lezinyawo esivandeni.

USipoti ulume ibhola laqhuma.

USipoti akaziphathanga **kahle**. Akakwazi nokuthi **nxese** ngalokho.



Bonke abantwana babhale imiyalezo ebalulekile encwadini yosuku lokuzalwa lukaNana. UBongi ubhale wathi.

Usuku oluhle lwesi-8 lokuzalwa kwakho, Nana. Ngiyabonga ukuthi ungimeme ngize emcimbini wakho wosuku lokuzalwa. Yimina uBongi



Masibhale

Funda le ndaba futhi bese ubeka uphawu ✓ empendulweni efanele.

Ngubani obe nomcimbi wosuku lokuzalwa?	
A	nguNana
B	nguBongi
C	nguJabu

Wenziwe nini umcimbi?	
A	ngoNhlaba
B	ngoNhlanguvana
C	ngoNtulikazi

Mangaki amakhandlela awaphephethile uNana?	
A	Amakhandlela ama-5
B	Amakhandlela ayi-6
C	Amakhandlela ayi-8

Midlalo mini abayidlalile?	
A	Ibhola lezandla
B	Ibhola lezinyawo
C	Ibhola lombhoxo



Sisebenza ngamagama

Funda la magama ulalele imisindo. Manje bhala imisho yakho emibili encwadini yakho yokubhalela.

gcina	gxoba
gcona	gxeka
gcoba	gxila

gqoka	itsako
gqoma	ipitsi
isigqoko	utsotsi

Amagama okubhekisiswa  
ngoba waluma kahle



Masibhale

Kopisha umusho.

Abafana bawajabulele amathoyisi.

# Izinsuku ezibalulekile, imilayezo ebalulekile

Ithemu 3 – Amasonto 1-2



Masenze lokhu

Nikeza lezi zithombe izinombolo ngokulandelana kwazo.



Masibhale

Bhala umusho ngesithombe ngasinye.

1	
2	
3	
4	



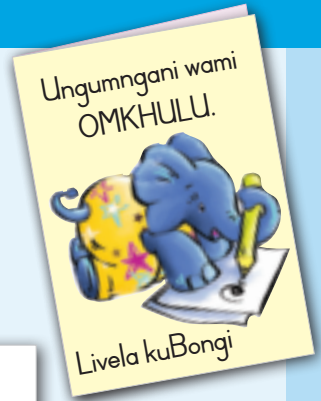
Masizijabulise

UBongi ubhalele uNana umlayezo obalulekile ngosuku lwakhe lokuzalwa. Dlulisela incwadi kubangani bakho aba-4, ubacele babhale umyalezo bawubhekise **kuwe** encwadini yakho. Nawe ungabhala umlayezo obalulekile ezincwadini zabo.

Imilayezo ebalulekile evela kubangani bami.

Blank writing area with a vertical column of colorful circles (pink, red, orange, yellow, green, blue, purple, pink, red, orange, yellow, green, blue) on the right side.

Blank writing area with a red heart at the top right and a cluster of colorful hearts (yellow, red, pink, blue) at the bottom right.



Masibhale

Hlela la magama uwafake ezikheleni ezifanele.

ixoxwana

isiqwayi

swaca

xwaya

esiqwini

swi

emotweni

twetwa

exoxweni

umqwebu

kuvotwa






Masifunde

UJabu utshela iklasi ngohambo lwakhe lwasezu. Uthi.

Ngiye ezu nomndeni wami. Siye ngetekisi ngoba bekubanda.



Sibone izilwane eziningi.

Sibone amadube, amabhubesi nezinyamazane.

Ngikujabulele ukubona indlulamithi ende kakhulu, ngagcina ngibone nendlovu enkulu nemvubu.

Sibone nezilwane zasepulazini. Amachwane enkukhu abemi eklelile.

Ngithe ngisabuka izilwane, inkawu yathatha ibhola lami. Ilithathe yayohlala nalo phezu kodonga.

Kamuva ngiye ephikhinikhini yokudla kwasemini nabangani bami.

Hhayi-ke, sahlala phansi kwesihlahla otshanini obuluhlaza.





Masibhale

Funda le ndaba, bese uphendula imibuzo.

Iwakhe  
wami  
ngoba

Ubehambe nobani uJabu ukuya ezu?

Uhambe no-

Bahambe ngani ukuya ezu?

Bahambe nge-

Baboneni ezu?

Babone

Ithatheni inkawu kuJabu?

Inkawu ithathe kuJabu



Sisebenza ngamagama

Funda la magama ulalele imisindo. Manje bhala imisho yakho emibili encwadini yakho yokubhalela.

gcizelela	gxuma
isigcaki	gxoba
igceke	isigxobo

uMgqibelo	itsunami
isigqebhezi	umtsalo
isigqiki	ubhotsotso



Masibhale

Bhala usho ukuthi kwenzekeni ezu.

Blank writing area with horizontal lines for student response.



Masenze lokhu

Buka imisindo kula magama. Bheka isipelingi-ke manje. Faka ebhokisini elilodwa amagama anawonkamisa abafanayo.

leli

yizo

yibo

yilo

emi

lezi

yikho

bemi

bethi

ethi

isho

iso

Amagama ano-**i o**Amagama ano-**e i**

Masenze lokhu

Faka izimpawu zokubhala kule misho.

ubeyephi ujabu

---

ubesezu ngesonto

---

uboneni

---

ubone amabhubesi izindlovu kanye nezinkawu

---

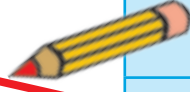




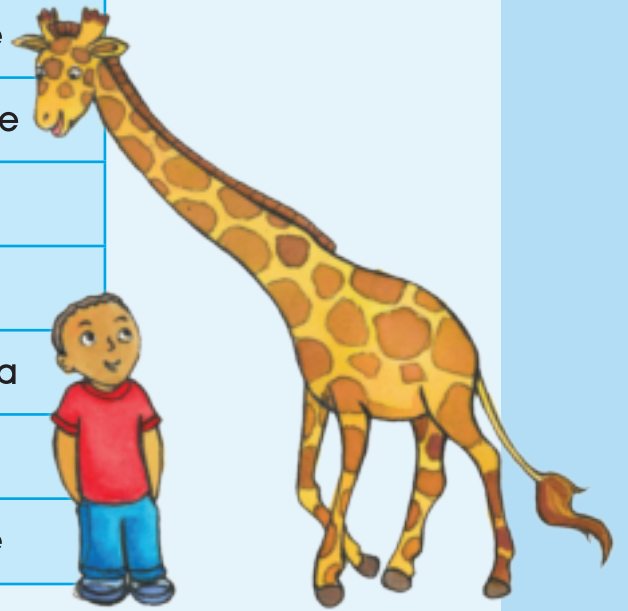
Masibhale

Dweba umugqa usuke emagameni asatshani uye emagameni asasibhakabhaka asho okuphikisayo. Isibonelo, sihlanganise okude nokufushane. Okude yigama elisho okuphikisana nokufushane.

okude
phezulu
okukhulu
kujabulile
ngaphambili
kuyashisa
kuqala

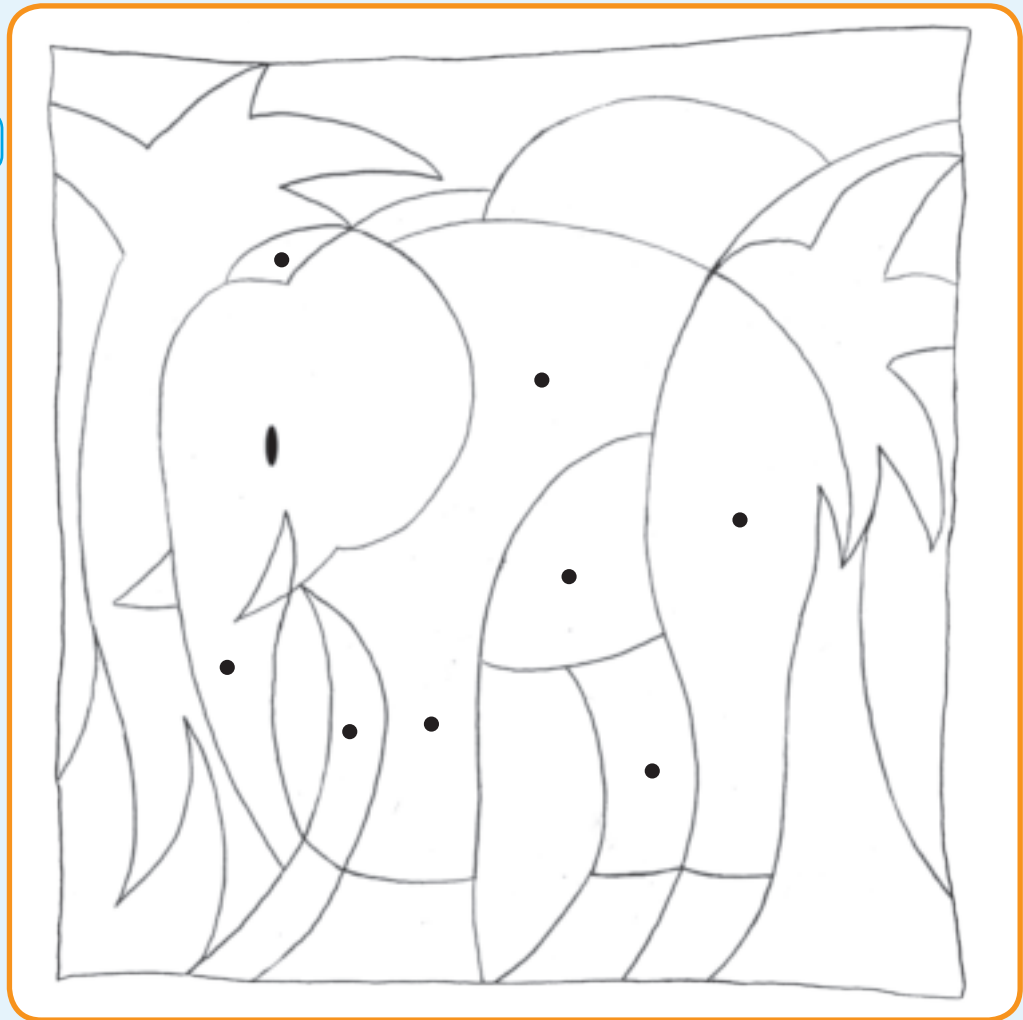


okuncane
okufushane
phansi
ngemuva
kuyabanda
kamuva
kudumele



Masizijabulise

Faka umbala ezikhaleni ukuthola ukuthi silwane sini lesi. Manje faka umbala osasibhakabhaka esibhakabhakeni, nosatshani ezihlahleni.





## Masifunde

UBebe uye wayobona izindiza noyise esikhumulweni sezindiza.

Babone izindiza eziningi ezinkulu. Ijambojethi indize yadlula.

Beyithwele abantu abangama-350.

Izindiza bekungathi zishaya phansi enhlabathini uma zihlala.

UBebe ubuke izindiza ezinkulu zisuka ezinye zihlala.

Indiza ngayinye beyinefulegi lesizwe elipendwe emsileni wayo.

Izindiza ezibuyayo bezifika zihlale emzileni wokuhlala.

UBebe unqume khona lapho ukuthi uzokuba umshayeli wendiza uma ekhula.

Ufuna ukundizisa ijambojethi.





Masifunde

Funda le ndaba uphendule imibuzo.

ubuke  
zisuka  
wayo

UBebe uye nobani esikhumulweni sezindiza?

Uhambe no-

Baboneni?

Babone

Bangaki abantu abangathwalwa yijambo jethi?

Balinganiselwa kwaba-

Ufuna ukuba yini uBebe uma esekhulile?

Ufuna ukuba



Sisebenza ngamagama

Funda la magama ulalele imisindo.

Manje bhala imisho yakho emibili encwadini yakho yokubhalela.

iqwele	esweni	itwani	ukuxwayana
qwasha	swaca	kuyavotwa	exoxweni
emgwaqweni	eSwazini	utwayi	isixwayiso



Bhala usho ukuthi kwenzekeni ohambeni lwakho obelungajwayelekile.

Masibhale

Blank writing area with horizontal lines for student responses.



Masenze lokhu

Bhala amagama anomsindo **kh** aqondane nezithombe.

isikhwama

ikhala

ikhabe

isikhindi

ikhowe

ikhekhe

isikhumba

ikhanda



umkhukhu



Masibhale

Yenza lezi zibalo zamagama.

isonto + eni =

esontweni

inqola + eni =

iso + eni =

uthuli + eni =

amanzi + eni =

ifa + eni =

idolo + eni =

isoso + eni =

ibhola + eni =

umlilo + eni =

impilo + eni =

iphepha + eni =

Sisebenzisa inkathi edlule uma isenzo sesenziwe saphela.



Masibhale

Dweba umugqa uqondanise isenzo negama elifanele elisenkathini edlule.

uyageza wayegeza

uyadlala



uyama



uyadla

wayedla

wayehlezi



wayemile



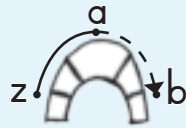
wayedlala

uhlezi



Masizijabulise

Landela izinhlamvu ze-alfabethi ukuhlanganisa amachashazi ukuze uthole ukuthi uBebe uboneni.



Tracing guide for letters y, x, s, r, o, n, c, d, i, j, m.

w.

.e

v .

.f

u .

t

s

i

h

.g

r .

.j

q .

.k

p .

o

.m

.l

n



Masifunde

Ngamaholidi, ubengekho umuntu obezogada uNomsa. Ubeye nomama wakhe emsebenzini. Basuke ngehora lesi-8 nqo. Unina kaNomsa uthengisa izithelo nemifino. UNomsa uyaye asize umama wakhe.

UNomsa wenze iphosta enkulu.

Abantu babone iphosta beza bazothenga.

UNomsa ubepakisha izithelo ezilandelanisa. Zibukeke kahle.

Uma eqeda umsebenzi wakhe, uphumule wafunda incwadi yakhe ekhuluma ngezinja.

Ngehora lesi-5 nqo babuyele ekhaya.

UNomsa ubejabulile uma engena etekisini.



Masibhale

Funda indaba bese ubeka uphawu ✓ empendulweni efanele.

Wenza msebenzi muni unina kaNomsa?

A	Uthengisa izithelo.
B	Uthengisa imifino.
C	Uthengisa izithelo nemifino.

Uhambeleni nonina ukuya emsebenzini uNomsa?

A	Kwakungekho muntu ozosala naye.
B	Wayefuna ukusiza umama wakhe.
C	Wayengazi ukuthi uzokwenzani.

Umsize kanjani unina uNomsa?

A	Wabeka izithelo nemifino ngokulandelana.
B	Wenza iphosta.
C	Wabeka kahle izithelo nemifino wayesenza iphosta.

Yini ayenzile uNomsa emva kokusiza umama?

A	Uye wafunda.
B	Uye walala.
C	Uye wadlala.

Bekusikhathi sini ngenkathi beya ekhaya?

A	Ngehora lesi-3 nqo
B	Ngehora lesi-5 nqo
C	Ngehora lesi-7 nqo

Babuyele kanjani ekhaya oNomsa benomama wakhe?

A	Ngemoto
B	Ngebhasi
C	Ngetekisi



Sisebenza ngamagama

Funda la magama ulalele imisindo. Manje bhala imisho yakho emibili encwadini yakho yokubhalela.

egcekeni	ukugxuma	gqiba	itsunami
ukugcaba	igxaba	egqumeni	itsako
egcakini	umgxala	gqakaza	tsa

Amagama okubhekisiswa  
engena  
wenze  
wakhe



Masibhale Kopisha umusho.

Ubeke kahle  
ama-aphula.

# Yisikhathi sini?



Masenze lokhu

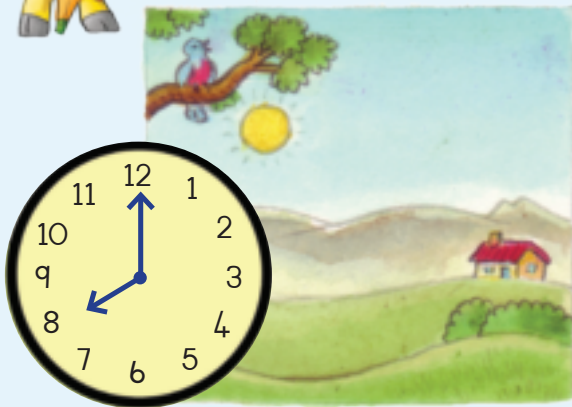
Dweba izinti zewashi ukukhombisa lezi zikhathi.

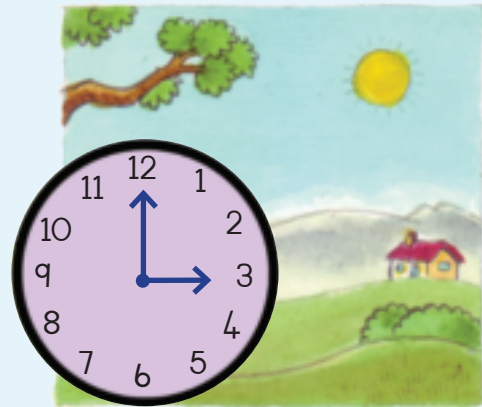
8 nqo	3 nqo	5 nqo	10 nqo

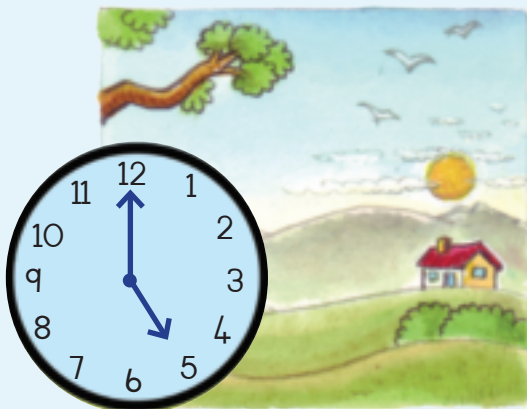


Masibhale

Bhala phansi okwenzile ngalezi zikhathi izolo.












Uma sikhuluma ngezinto ezingaphezu kweyodwa, siguqula uhlamvu oluthile egameni. Uma intombazana ingeyinye sithi amantombazana, nomfana ongemunye sithi abafana. Amagama aveza into ukuthi ayiyinye siwabiza ngobuningi. Igama elingenabo ubuningi sithi liwubunye. Amagama anobuningi asebenzisa izinhlamvu ezahlukene njengokuthi: ama-, izi-, aba-, njll.



**Masibhale**

Nikeza ubuningi bala magama.

ikati 	amakati 	inkomo 	izinkomo
isisu		umuntu	
inkukhu		umuzi	
ikhanda		isinkwa 	
isicabucabu		idolo 	
ikhekhe		inja 	



**Masizijabulise**

Yenza iphosta yokuthengisa okuthile. Dweba isithombe ukhombise ukuthi uthengisani.



**Siyathengisa**



Uthengisani?

---

Ibiza malini?

---



---

Singayithenga kuphi?

---



---



---



---

Dweba isithombe sento oyithengisayo.



Masifunde

UCebo uhambe noMimi baya emtatsheni wezincwadi.

UMimi ubedudula uCebo ngesihlalo sakhe sabakhubazekile.

Babuke izincwadi eziningi.

UCebo uthande izincwadi ezikhuluma ngezilwane.

UMimi uthande izincwadi ezinezindaba.

Uthisha ubafundele indaba ngesikhathi besemtatsheni wezincwadi.

Kuthiwe bavumelekile ukuya nazo ekhaya izincwadi.

Kuthiwe futhi uma sebeqedile ukuzifunda bangazibuyisa bathathe ezinye.

Kunezincwadi eziningi ezimnandi emtatsheni wezincwadi.



Amagama okubhekiswa  
 izincwadi  
 uhambe  
 nazo  
 ezinye



Masibhale

Sebenzisa la magama ukuqedela imisho.

amabili

enezilwane

yezindaba

uthisha

uMimi

UMimi wathanda incwadi \_\_\_\_\_.

\_\_\_\_\_ yena wadudula uCebo ngenqola yabakhubazekile.

Ungayithatha enye incwadi emva kwamasonto \_\_\_\_\_.

\_\_\_\_\_ wabafundela indaba.



Sisebenza ngamagama

Funda la magama ulalele imisindo.

Manje bhala imisho yakho emibili encwadini yakho yokubhalela.

ihlo

ingoma

unyaka

ihlombe

thola

ingubo

enye

thina

ingena	inyoni	isihlalo	uthi



Masibhale

Cela abangani aba-5 bakunike amagama ezincwadi abazithanda kakhulu. Bhala igama lomngani bese kuthi eduze kwalo ubhale igama lencwadi ayithanda kakhulu. Manje gwalisa igama lakho nencwadi oyithanda kakhulu wena. Thikha izincwadi ofisa ukuzifunda.

Igama	Incwadi ethandeka kakhulu	✓



Masenze lokhu

Dweba isithombe sencwadi oyithandile bese ubhala ngekushoyo.

Besithini isihloko sencwadi?

Dweba isithombe sekhava yaleyo ncwadi.

Bhala imisho emibili usho ukuthi incwadi beyimayelana nani.








Masibhale

Qondanisa inkathi edlule neyamanje kula magama.

sibone

sihambe

sisuke

sisale

silala

sibona

sisuka

sihamba

sidla

sidle

Igama **sibona** lisitshela ngenkathi yamanje.  
Igama **sibone** lisitshela ngenkathi edlule.



Masibhale

Funda imisho uzungelezele igama elifanele.

Ebusuku bayizolo **sibona** / **sibone** inyanga.Manje **sibone** / **sibona** ilanga.**Sidle** / **sidla** ukudla kwasemini izolo.Manje **sidle** / **sidla** ukudla kwasekuseni.Izolo ebusuku **sisuke** / **sisuka** sayolala.Manje **sisuke** / **sisuka** siya esikoleni.



Masizjabulise

Tshela umngani wakho ukuthi ucabanga ukuthi zimayelana nani lezi zincwadi ezingezansi. Yisho ukuthi yiziphi othanda ukuzifunda. Zinikeze izinombolo usuke kweyoku-1 uye kweyesi-4. Eyoku-1 yincwadi oyithanda kunazo zonke, eyesi-4 ngoyithanda kancane kunazo zonke.

AMACEBO OKUNQOBA EBHOLENI LEZINYAWO



ngu John Smith

IZINGULUBE EZINCANE EZINTATHU



ngu I M Wolf

UKWENZA INGADI



ngu Ann Green

UWini Phu



ngu A A Milne

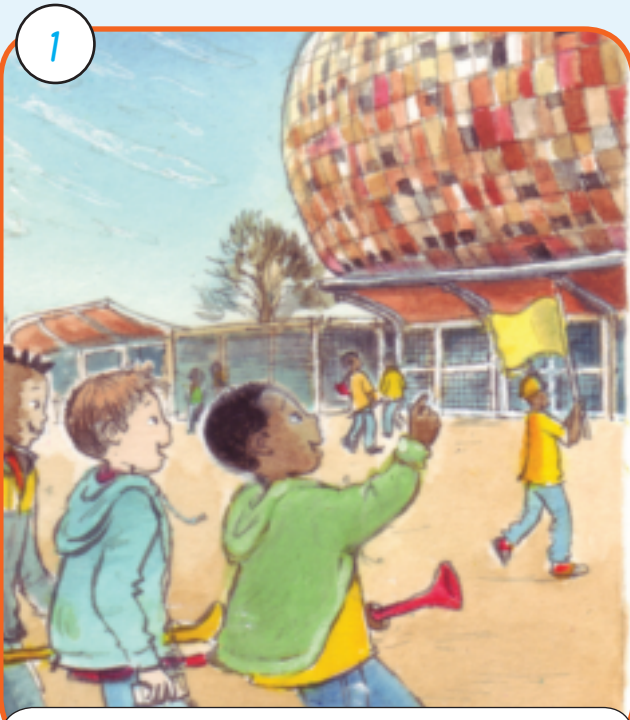


Masibhale

Khetha incwadi eyodwa ubhale imisho emihlanu usho ukuthi ucabanga ukuthi ikhuluma ngani incwadi oyikhethile.

Handwriting practice area with five horizontal lines.

Buka izithombe bese usho ukuthi indaba imayelana nani.




---



---




---



---




---



---




---



---



Masifunde

UTHabo uthanda ibhola **lezinyawo**. Uhambe noJabu benoBebe ukuyobona umdlalo omkhulu.

Bekudlala i-Chiefs ne-Sundowns. **Bekunezinkulungwane** zabantu kulo mdlalo.

Bebefutha amavuvuzela. Kuvele kwafika **invula**. Babuyele ekhaya **ngesitimela**.



Amagama okubhekisiswa

uthanda  
kuvele  
omkhulu



Masibhale

Manje bhala isihlokwana esisodwa ngezansi kwesithombe ngasinye ekhasini elingakwesokunxele.



Sisebenza ngamagama

Funda la magama ulalele imisindo. Hlela la magama uwafake ezikhaleni ezifanele.

inhlanhla

indlala

nhl

ndl

indlu

indlovu

inhloso

inhlanzi



Masibhale

Bhala umusho owodwa ngesithombe ngasinye esingakwesokunxele.

1

2

3

4



Masibhale

Bhala amagama anonkamisa abafanayo ebhokisini elilodwa. Buka igama ngalinye bese ulibhala ebhokisini elifanele.

uphi      kuhle      kuphi      kushe  
 kubi      kuwe      kuse      kuthi  
 luthi      uthi      kuze      kume



Masibhale

Kokelezela igama elifanele mayelana nokwenzeka emdlalweni webhola lezinyawo izolo.

Izolo **sihamba/sihambe** ngesitimela saya enkundleni.

Thina **sibuka/sibuke** iSundowns idlala.

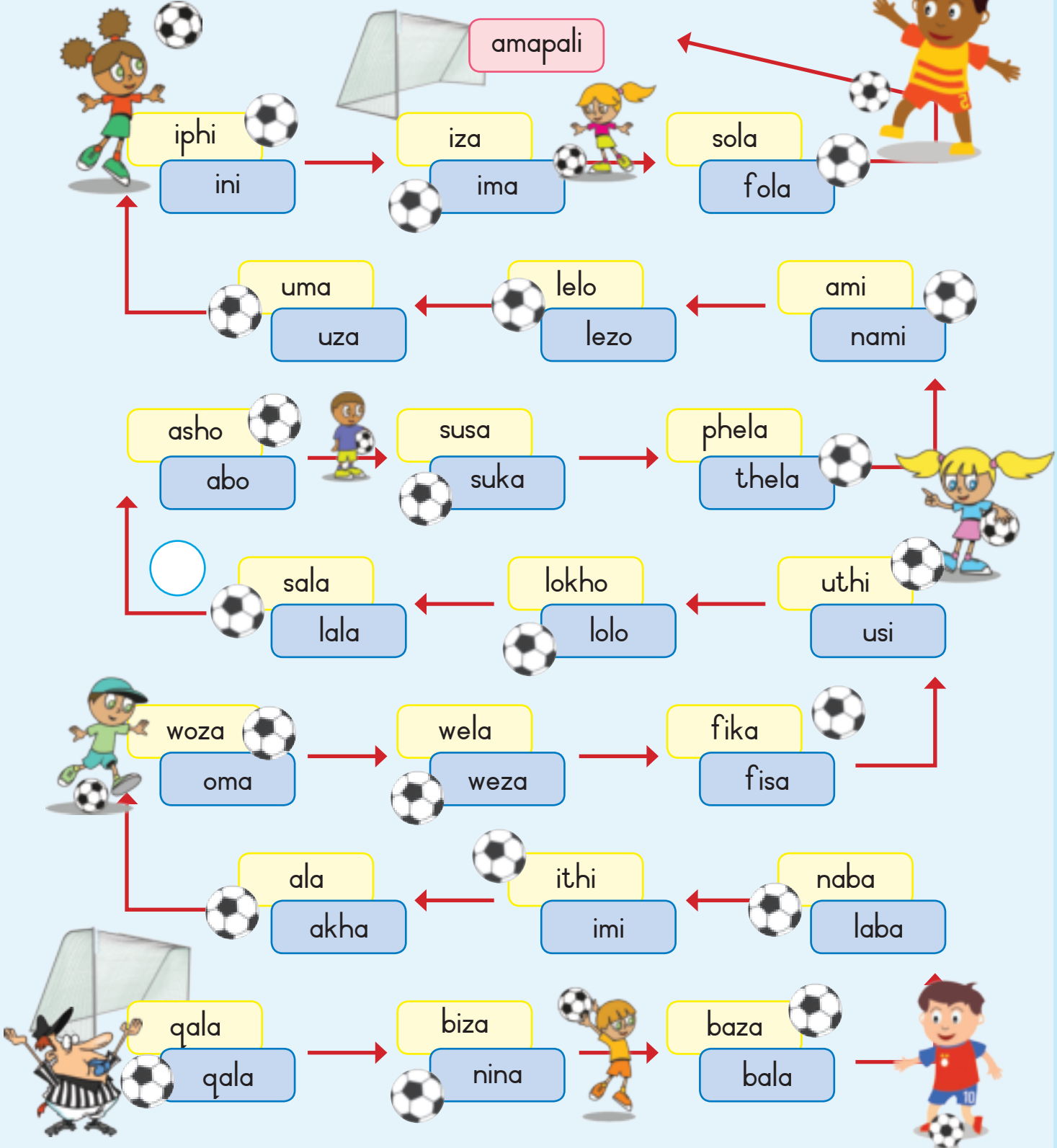
Abadlali **bakhahlela/bebekhahlela** ibhola ngokuzimisela.

Ngenkathi sibuya **liqala/liqale** ukuna.





Dlala lo mdlalo nomngani wakho. Khetha iqembu eliphuzi noma elisasibhakabhaka. Bhlekani ukuthi ubani ozofaka igoli kuqala. Fundani igama elinombala ngamunye ngamunye. Uma wenze iphutha, bayakweqa. Oqede ukufunda amagama kuqala uphiwa igoli. Phindani nidlale futhi kodwa kulokhu sekumele udlalele elinye iqembu.





Masikhulume

Buka isithombe ukhulume ngokubonayo.



Masifunde



Ngelinye ilanga kwakukhona uMama uDada owayehlala epulazini nomndeni wakhe. UMama uDada wayefukamele amaqanda akhe ayisi-7. Wayeselindele ukuthi achamusele.

Yisikhathi sokuthi achamusele la maqanda ami. Ngilinde ukubona amachwane ami ayisi-7 amadada.

Emva kwalokho avuleka amaqanda ngalinye ngalinye. Avuleka wonke kwasala elilodwa. Lalikhulu leli qanda.

Sanibona.  
Ngimafukufuku.

NginguNikhi.

NginguZaZa.

NginguTsepo.

NginguGeli.

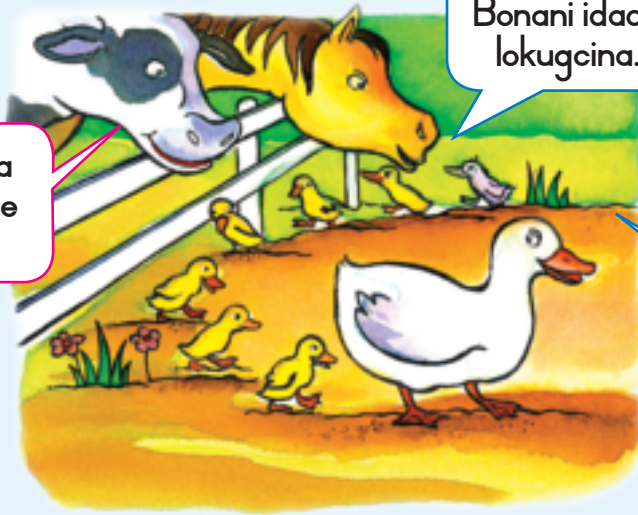
Ngingubani?





UMama uDada wafukamela iqanda elikhulu. Ekugcineni lavuleka iqanda. Kwaphuma ichwane lokugcina ledada. Likhulu linamandla. Yichwane elikhulu ledada elibi.

Ngikuphi?  
Ngingubani igama?



Yidada elixakile leli!

Bonani idada lokugcina.

UMama uDada wawathatha wonke amachwane akhe waya nawo echibini.

Ha ha ha! Yidada eliyisimanga.

Agxuma wonke amachwane angena emanzini. Ayabhukuda ayazidlalela. Ichwane elibi ledada lona libhukuda kahle kunawo wonke amachwane.



# Ichwane elibi ledada (iyaghutshwa)



Asuka lapho aya epulazini. Azizange ziliphathe kahle ezinye izilwane ichwane elibi ledada. Izikhukhukazi zalichofa, izinja zalikhonkotha.

Ngobunye ubusuku labaleka ichwane elibi ledada.



Bonke abantu abangithandi. Ngiyahamba mina.



Lagijima laze lafika emfuleni. Labona izinyoni eziningi ezinhle zibhukuda emfuleni. Izimpaphe zazo zazishelela kahle. Zazinemiqala emide. Izimpiko zazo zizinhle.

Ngiyathanda kodwa ukudlala nabo. Bahle. Yimi nje engimubi.



Kwafika ubusika. Kwaba neqhwa yonke indawo. Umfula waphenduka iqhwa. Lagodola laphatheka kabi ichwane elibi ledada.

Nginesizungu.  
Ngiyagodola.

Kwase kufika iNtwasahlobo. Kwaphuma ilanga futhi, izihlahla zaba luhlaza zaba zintsha.

Ekuseni ngelinye ilanga ichwane elibi ledada labona amahansi amahle ebhukuda futhi.



Laphatheka kabi idada elincane. Lavele laphihlika lakhala.

Ngimubi, nginesizungu futhi. Anginabangani.

# Ichwane elibi ledada (iyaghutshwa)



Yimi lo?

Labuka izinyembezi zalo ngesikhathi likhala. Lazibona lona ezinyembezini. Liyihansi elihle.

Kwakukhona namanye amahansi ebhukuda eduze kwalo. Nawo alibiza ichwane elibi ledada ukuthi lizobhukuda nawo. Ichwane elibi ledada lagxumela emanzini. Lazizwa lijabule kakhulu impela.

Woza uzobhukuda nathi.  
Uyihansi njengathi.  
Uyihansi elihle kunawo wonke amahansi akhona.





**81 Ibhele liyagunda 36**

Ufunda indaba exoxa ngothedibhe kaPhumi.  
Uphendula imibuzo ebhekiswe endabeni.  
Uhlela amagama ngamabhokisi afanele emisindo (hl, mf, mv, ndl).  
Kopisha lezi zinhlamvu A, a.

**82 Ithoyisi lami elikhethekile 38**

Wenza inhlolovo bese ebhala ethebhuleni akutholile.  
Unikeza izithombe izinombolo ukukhombisa ukulandelana kwezinto.  
Ubhala imisho ngesithombe ngasinye.  
Uthola isabizwana esinye ebhekise emagameni adwetshelwe.

**83 UBongi wenza ukudla kwasemini 40**

Uxoxa ngesithombe.  
Ufunda iresiphi.  
Uphendula imibuzo eminingi ekhethisayo mayelana neresiphi.  
Ufunda amagama alalele imisindo kw, nhl, dw, lw.  
Ubhala imisho esebenzisa amagama awanikeziwe.  
Ubhala umusho ngokudla abakuthandayo.  
Kopisha lezi zinhlamvu B, b.

**84 Ukudla engikuthandayo 42**

Udweba isithombe salokho abathanda ukukudla.  
Uqondanisa imisho (inhloko, umenziwa).  
Ugcwalisa amagama angekho esebenzisa izithombe.  
Uthola akokelezele amagama kuphazili yamagama.

**85 Ukuphepha ekhaya 44**

Ufunda ibhukwana mayelana nokuphepha ekhaya.  
Uphendula imibuzo ethile ebhekiswe endabeni.  
Imisindo: gc, gx, gq, ts.  
Ubhala umusho ngabakwenza ukuze baphephe ekhaya.

**86 Imithetho yasekhaya 46**

Udweba isithombe ukukhombisa

ukuthi kumele kwenziweni ukuze kube khona ukuphepha ekhaya.  
Ubhala umusho ngesithombe.  
Usebenzisa izimpawu ezifanele zokubhala.  
Uqondanisa amagama amqondo ofanayo.  
Uqedela imibuzo mayelana nokuphendulwa kwemibuzo ethinta izabizwana.

**87 Kulahleke umakhalekhukhwini 48**

Ufunda indaba exoxa ngokulahleka kukamakhalekhukhwini.  
Uphendula imibuzo ebhekiswe endabeni.  
Uhlela amagama ndl, nhl.  
Ubhala indaba ngokulahleka kwento ethile.

**88 Phezulu, phansi, phakathi nasemaceleni 50**

Usebenzisa amagama athile amsiza ukuthola izinto ezithile.  
Unikeza amagama azosetshenziswa ezithombeni.  
Uqedela amagama esebenzisa izakhi ezithile.  
Ufunda imiyalelo bese eqedela imidwebo.  
Uhlela amagama ngamabhokisi afanele emisindo (ph, ng, mp)

**89 Ikati lidinga ukunakekelwa 52**

Ufunda isikhangiso.  
Uphendula imibuzo eminingi ekhethisayo mayelana nendaba.  
Uhlela amagama ngokwemisindo ndl, nhl.  
Ubhala ngesilwane esingumngane wabantu.  
Kopisha lezi zinhlamvu E, e.

**90 Ikhaya lekati elilahlekile 54**

Ugcwalisa onkamisa ukuqedela amagama bese eqondanisa nezithombe.  
Usebenzisa izimpawu zokubhala ezifanele.  
Uphinda abhale imisho esebenzisa izimpawu ezifanele.  
Wakha isikhangiso ngesilwane esilahlekile.

**91 Isimemo somcimbi 56**

Ufunda isimemo.  
Uphendula imibuzo ebhekiswe esimemweni.  
Imisindo: gx, gq, lw.  
Ubhala imisho esebenzisa amagama awanikeziwe.  
Ubhala umusho ngezinsuku zabo zokuzalwa.  
Kopisha lezi zinhlamvu F, f.

**92 Woza emcimbini wami 58**

Uqedela isimemo sedili labo.  
Ubhala futhi inkathi edlule emishweni.  
Uthola amabizo nezenzo emishweni.  
Uqedela ithebhula esebenzisa ulwazi aluthole esithombeni.

**93 Amachwane amancane amahlanu 60**

Ufunda indaba ngamachwane amancane amahlanu.  
Imisindo: chw, nsw, ny.  
Ubhala imisho esebenzisa amagama awanikeziwe.  
Kopisha lezi zinhlamvu G, g.

**94 Amachwane amancane amahlanu (iyaqhutshwa) 62**

Ufunda indaba.  
Uthola amagama afanele enkathi edlule.  
Wakha amagama ambaxa.  
Uhlela amagama ngokwemisindo ml, mf, cw, mv, nsw, nkw, khw, ny.

**95 Imvubu nofudu 64**

Ufunda indaba yemvubu nofudu.

**96 Imvubu nofudu (iyaqhutshwa) 65**

Ufunda indaba.  
Uxoxa nomngani ngendaba.



Masifunde

UPhumi unothedibhe obalulekile namuhla. Uyathanda ukulala nothedibhe wakhe. Umfowabo omncane uJohane naye uyathana ukudlala nothedibhe.

Buka ukuthi ngimenze waba muhle kanjani uthedibhe.

Namuhla uma uPhumi efika evela esikoleni uthole uthedibhe wakhe ugundwe ikhanda nesisu. Umfowabo omncane nguye ogunde uthedibhe.



UPhumi uthukuthele. Udinwe yisenzo sikamfowabo.



Uwulimazeleni uthedibhe wami? Yimbi le nto oyenzile!

Umama wakhe ubeke isigqoko esibomvu nejakhethi esasibhakabhaka phezu kukathedibhe.



Yibone uthedibhe, Phumi. Ibukeka kahle futhi.

Amagama okubhekisiswa

yakhe  
naye  
nesisu



Masibhale

Funda indaba uphendule imibuzo.

Kube yini ithoyisi elibalulekile likaPhumi namuhla?

Kube yi-

Ngubani osike izinwele zikathedibhe?

Uphatheke kanjani uPhumi uma ebona uthedibhe?

Uzizwe e-

Ubekeni unina kaPhumi phezu kukathedibhe?

Uyigqokise



Sisebenza ngamagama

Funda amagama ulalele imisindo. Manje bhala imisho yakho emibili encwadini yakho yokubhalela.

indlu

mvuse

mvikele

indlondlo

mfake

hlala

mfisele

hloma

hluma

mfune

mvulele

indlela

Bhala imisho emibili ngethoyisi lakho olithandayo.

Masibhale



Kopisha lezi zinhlamvu.

Masibhale



a

a

# Ithoyisi lami elikhethekile



Masenze lokhu

Thola ukuthi abangani bakho banamaphi amathoyisi akhethekile. Bhala amagama abo emgqeni ophezulu bese ubhala amathoyisi abo akhethekile emgqeni ongezansi.

Igama	uPhumi			
Ithoyisi	Ithedi			



Masibhale

Nikeza lezi zithombe izinombolo ezilandelana ngokufanele.



Manje bhala umusho owodwa ngesithombe ngasinye.

1	
2	
3	
4	



Masibhale

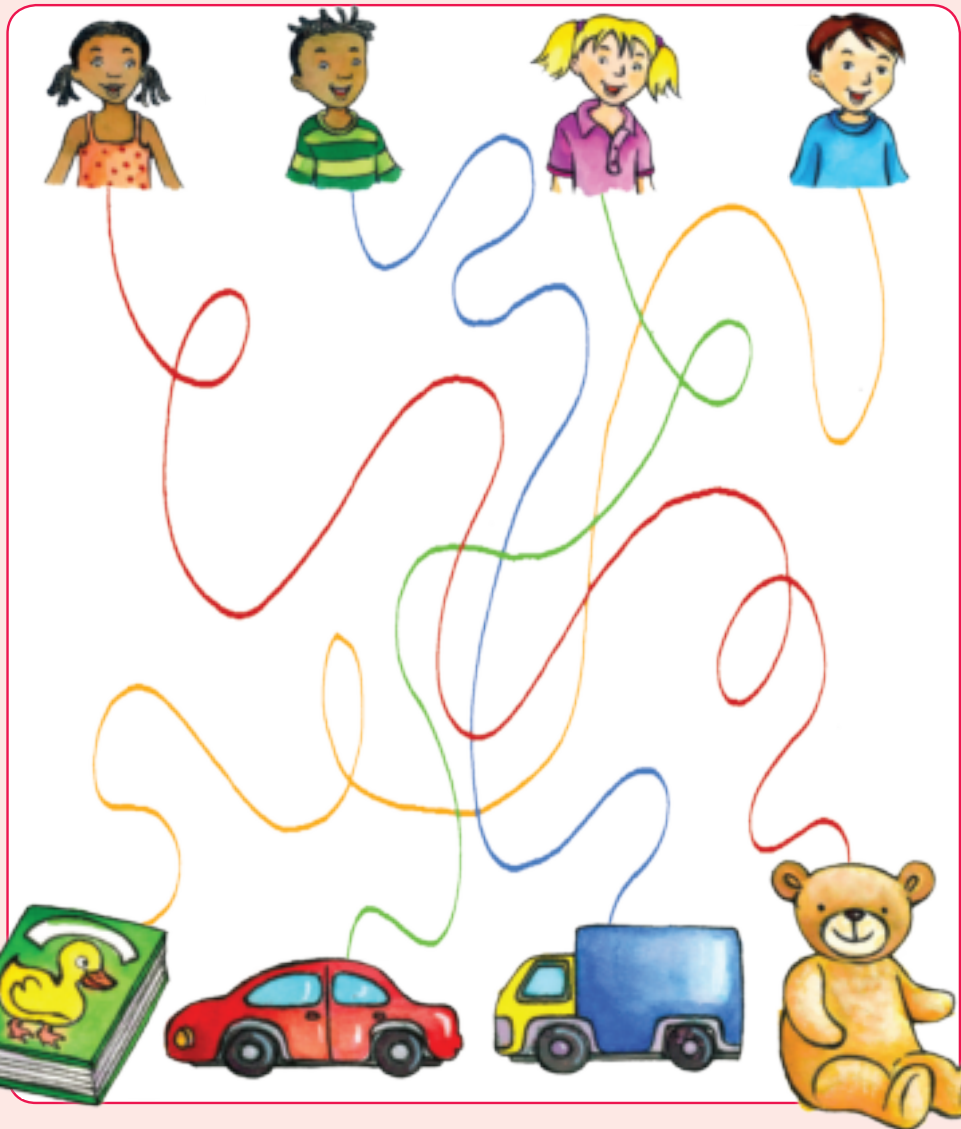
Funda umusho ngamunye, bese ukokelezela isabizwana ongasisebenzisa esikhundleni segama elidwetshelwe.

<u>UPhumi</u> uyathanda ukudlala nothedibhe wakhe.	Yona	Yena	Wena
<u>Umama kaPhumi</u> wayilungisa indaba kathedibhe.	Yona	Yena	Wena
<u>Umfowabo kaPhumi</u> wasika uthedibhe.	Yona	Yena	Wena
<u>Uthedibhe</u> wabukeka kahle futhi.	Wena	Yona	Wena
<u>UPhumi nonina</u> bangamantombazana.	Bona	Yena	Wena



Masizijabulise

Hamba phezu kwemigqa ukubona ukuthi yimaphi amathoyisi abanawo.





## Masikhulume

Make ubheke isithombe ukhulume ngokubonayo.



## Masifunde

UBongi uzokwenzela abangani bakhe isidlo sasemini uma kuphuma isikole namuhla.



## ISAMISHI ELINGAJWAYELEKILE



## Okudingayo

- 1 isipunu sobisi lwekhondensi
- 1 ubhanana

- Ibhotela lamantongomane
- 2 izingcezu zesinkwa



## Okumele ukwenze

Faka ibhotela lamantongomane ocezweni olulodwa lwesinkwa.

Sika ubhanana uwubeke phezu kwebhotela lamantongomane.

Gcoba ikhondensi kolunye ucezu lwesinkwa.

Hlanganisa izingcezu ndawonye zakhe isamishi.

Sika isamishi libe yizingcezu ezine.



**Yidla ngenjabulo isamishi lakho.**



Masibhale

Beka uphawu (✓) eduze kwependulo efanele.

Zingaki izingcezu zesinkwa ezidingekayo?	
A	Lunye
B	Zimbili
C	Zintathu

Udingani enye?	
A	Ibhotela lamantongomane
B	Ushizi
C	Ikhondensi

Ziba ngaki izingcezu zesamishi uma sewulisikile?	
A	Ziba mbili
B	Ziba ntathu
C	Ziba zine

Udinga siphi isithelo?	
A	I-aphula
B	Uphayinaphu
C	Ubhanana



Sisebenza ngamagama

Funda amagama ulalele imisindo. Manje bhala imisho yakho emibili encwadini yakho yokubhalela.

kwasa	inhloko	dweba	lwami
kweza	inhliziyo	idwala	lwakhe
kwama	izinhlungu	isidwedwe	lwethu

Amagama okubhekisiswa

phezu  
ucezu  
ezine

Bhala imisho emibili ngalakho othanda ukukudla.

Masibhale



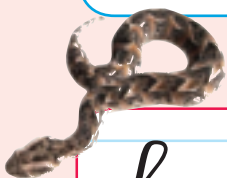
---



---



---



Kopisha lezi zinhlamvu.

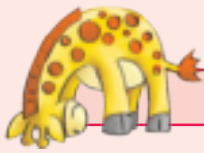
Masibhale



Handwriting practice for the letter 'b'. It shows a solid cursive 'b' followed by a dotted cursive 'b' for tracing.

Handwriting practice for the letter 'B'. It shows a solid uppercase 'B' followed by a dotted uppercase 'B' for tracing.

# Ukudla engikuthandayo



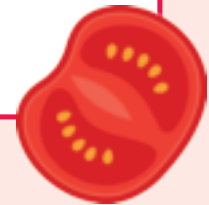
## Masenze lokhu

Dweba isithombe sokudla ongakwazi ukuzenzela khona. Tshela abangani bakho ukuthi kwenziwa kanjani.

Okokuqala ngi-...

Ngilandelise ngoku-...

Bese ngi-...



## Masibhale

Yakha imisho emine. Dweba umugqa ukuqondanisa ingxenye esebhokisini elisasibhakabhaka naleyo engakwesokudla ebhokisini elisatshani.

UPhumi ubethukuthele

Ngidle isamishi

Ngithathe isambulela

Ngiphephethe amakhandlela

ngoba bekuwusuku lwami lokuzalwa.

ngoba umfowabo ubesike uthedibhe wakhe.

ngoba bengilambile.

ngoba belina.



## Masibhale

Gcwalisa amagama adingekayo kule misho.

inhlanzi

ubisi

amaswidi

isinkwa

ama-aphula

itiye

Ngithanda ukuphuza



Uthanda



Sithanda



\_\_\_\_\_.

Yena uthanda ukudla



\_\_\_\_\_.

Bona bathanda ukudla

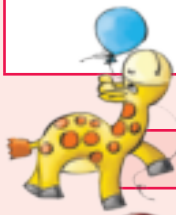


\_\_\_\_\_.

Yena uthanda ukuphuza



\_\_\_\_\_.



Masizijabulise

Thola ukokelezele ukudla ebhokisini. Dweba umugqa usuke egameni uye esithombeni esifanele. Amanye amagama ayehla amanye ayavundla.



i	s	i	n	k	w	a	e	i	u
n	g	q	s	s	t	u	v	-	p
y	g	i	n	k	o	m	o	p	h
a	i	q	a	n	d	a	r	h	i
m	m	u	s	w	i	d	i	u	s
a	g	i	n	h	l	a	n	z	i
y	h	l	d	w	x	v	m	a	x
i	t	i	y	e	u	b	i	s	i





Masifunde

Phepha ekhaya.

## PHEPHA EKHAYA



Beka amabhodwe ancike ngemuva esitofini.



Ungadedeli intambo yeketela ilengele lapho kufinyelela khona abantwana.



Beka imithi lapho abantwana bengafinyeleli khona.



Ungadlali ngamathini amadala.



Ungadlali ngezintambo zikagesi.



Beka upharafini endaweni ephephile.



Masibhale

Funda leli pheshana bese uphendula imibuzo.



Bhala phansi into eyodwa umama webhele asitshela ukuthi siyenze ukuze siphephe ekhaya.

---



---

Bhala phansi into eyodwa ikhangaru esitshela ukuthi siyenze ukuze siphephe ekhaya.

---



---



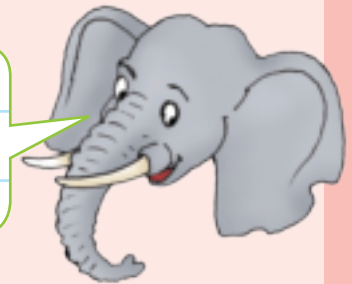


Bhala phansi into eyodwa unogwaja asitshela yona ukuze siphephe ekhaya.

Blank writing lines for the rabbit exercise.

Bhala phansi into eyodwa indlovu esitshela yona ukuze siphephe ekhaya.

Blank writing lines for the elephant exercise.



Sisebenza ngamagama

Funda amagama ulalele imisindo. Manje bhala imisho yakho emibili encwadini yakho yokubhalela.

Amagama okubhekisiswa

gcizelela	gxuma	uMgqibelo	itsunami
isigcaki	gxoba	isigqebhezi	umtsalo
igceke	isigxobo	isigqiki	ubhotsotso

ukuze ekhaya yona



Masibhale

Bhala usho ukuthi yini oyenzayo ukuqiniseka ukuthi uphephile ekhaya. Bhala imisho emihlanu usho ukuthi wenzani ukuze uphephe ekhaya.



Large blank writing area for the giraffe exercise.



Handwriting practice for the letter 'a', showing a solid 'a' and a dotted 'a' for tracing.

Kopisha lezi zinhlamvu.

Masibhale



Handwriting practice for the letter 'b', showing a solid 'b' and a dotted 'b' for tracing.



## Masenze lokhu

Dweba isithombe  
ukukhombisa okumele  
ukwenze ukuze  
uphephe ekhaya.  
Manje bhala umusho  
ngesithombe sakho.




---



---



---



## Masibhale

Bhala le misho usebenzise izimpawu zokubhala. Sebenzisa osonhlamvukazi ekuqaleni kwemisho nawongqi noma izimpawu zokubuza ekugcineni kwemisho. Khumbula ukusebenzisa osonhlamvukazi uma ubhala amagama abantu, ezinyanga zonyaka, ezindawo kanye nawezinsuku zesonto.

ngomgqibelo uthabo nomimi bebedlala kubo kathabo

uyawuthanda u - ayisikhilimu

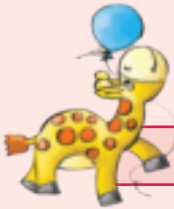
ubongi nonomsa baya ethekwini ngontulikazi

igama lami ngingu -

Dweba umugqa usuke egameni kukholamu esatshani uye emagameni akukholamu esasibhakabhaka amqondo ofanayo.



Masibhale



Masizijabulise

Qedela le misho ngawe kanye nalokho okuthandayo. Zonke izimpendulo ziyimisho, ngakho kumele ziqale ngosonhlamvukazi.

amukelekile
kuncane
kuningi
nyamalala
khuluma
kudukile
kuhle

kumbalwa
afanele
shabalala
kuyabukeka
kuyinqwaba
kulahlekile
yisho

Igama lami ngingu-

Ngazalwa

Abangani bami ababalulekile ngawo-...

Usuku engiluthandayo esontweni

Usuku lwami lokuzalwa

Uhlelo lukamabonakude engiluthandayo

Incwadi engiyithandayo

Igama likathisha wami ngu-...



Masifunde

Uyise kaBongi ulahlekelwe  
wumakhalekhukhwini.

Ukhulumele phezulu wathi,  
"Ukhona obone ucingo lwami?"

Sifune ngaphansi kombhede.

Phezulu kweshalofu.

Emva kwedeski.

Phakathi emaphaketheni kababa.

Ngaphandle kwendlu.

Ngaphakathi endlini.

Eduze kwetafula.

Phezu kwethelevishini.

Sezwa – nkrrrrrrr, nkrrrrrrr.

Samthola umakhalekhukhwini  
phakathi esiqandisini!



Nkrrrrrrrr!  
Nkrrrrrrrr!



Masibhale

Funda indaba bese  
uphendula imibuzo.

Ubelahlekelwe yini ubaba?

Ubelahlekelwe

Bhala phansi izindawo ezimbili lapho befune khona.

Bafune

Bawutholephi umakhalekhukhwini?

Bamthole

Uke walahlekelwa okuthile? Bekuyini?



Sisebenza ngamagama

Funda amagama ulalele imisindo.  
Manje bhala imisho yakho emibili encwadini yakho yokubhalela.

indlu

indlela

indlovu

izindlubu

izinhlelo

enhle

izinhlobo

inhloso

Amagama okubhekisiswa

obone  
ucingo  
sifune

inhlanhla	inhlalo	indluzula	izindleko



Masibhale

Bhala indaba ekhuluma ngesikhathi owalahlekelwa ngaso okuthile.  
Yini eyakulahlekelwa? Wagcina uyithole kuphi?

Large writing area with horizontal lines for a story.



Handwriting practice box for the letter 'd'. It shows a solid 'd' followed by a dotted 'd' for tracing.

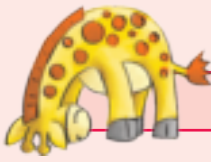
Kopisha lezi zinhlamvu.

Masibhale



Handwriting practice box for the letter 'D'. It shows a solid 'D' followed by a dotted 'D' for tracing.

# Phezulu, phansi, phakathi nasemaceleni



Masenze lokhu

Fihla okuthile phakathi ekilasini. Umngani wakho kumele akucinge okulahlekile. Kumele athi, "Ngicinga ngemuva ...", ngaphansi ..., noma eduze ..."



Masibhale

Yisho igama elimele isithombe ngasinye. Qedela igama ngalinye ngokusebenzisa u-mv noma u-mf.

mv

mf



imfengwane



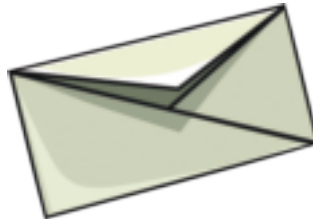
i \_\_\_ uyo



i \_\_\_ u



uve \_\_\_ ane



i \_\_\_ ilophi



i \_\_\_ ula



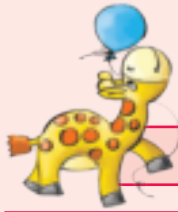
i \_\_\_ iliji



i \_\_\_ ene



i \_\_\_ ukuzane



Funda imiyalelo bese uqedela isithombe.

Masizijabulise



Dweba ilanga nendiza esibhakabhakeni.	Dweba umnenke phambi kwezimbali.
Dweba inyoni esesihlahleni.	Dweba ufudu eduze kwezimbali.
Dweba izimbali ezingaphansi kwesihlahla.	Dweba uvemvane ngenhla kofudu.



Masibhale

Hlela la magama ahambisane namabhokisi ezipho.

phuphu	bhala	phepha	impongo
ngithi	phaka	ngoba	iphuphu
ngicela	impempe	impela	ngathi



ph




ng




bh




mp




Masifunde

## Uyawathanda amakati?

Sinekati elimvukumvuku, eliqinile,  
elihle, elincane elidinga ikhaya.

Linomsila omude kanye  
nemithende.

Lithanda ubisi kanye nenhlanzi.

Igama laleli kati nguThebe.

Uma ufisa ukusiza ngokulinakekela  
ulithande, shayela uGugu  
kwaSPCA, 012 012 0120.



Masibhale

Funda isikhangiso bese ubeka uphawu (✓) empendulweni efanele.

Yisiphi isilwane esidinga ikhaya?

A	Inja
B	Ikati
C	Ihhashi

Ungashayela bani uma ulifuna leli kati?

A	uGugu
B	Isitolo sezilwane ezithengisayo
C	Umlimi

Lingubani igama ikati?	
A	uThebe
B	uKhithi
C	uBheni

Lithanda ukudlani?	
A	Ubisi
B	Ushizi
C	Inhlanzi

Lithanda ukuphuzani?	
A	Ubisi
B	Ijusi
C	Itiye

Liziphatha kanjani ikati?	
A	Liyalala njalo.
B	Liqinile.
C	Liyalwa.



Sisebenza ngamagama

Funda amagama ulalele imisindo.  
Manje bhala imisho yakho emibili encwadini yakho yokubhalela.

- indlala
- izinhlobo
- indlulamithi
- ezinhle
- indlela
- inhlambi
- endleleni
- inhloso

Amagama okubhekisiswa

kanye  
ubisi  
ufisa

amandla	amanhlonhlo	izandla	inhloko



Masibhale Bhala ngesilwane sakho.

---



---



---



Kopisha lezi zinhlamvu.

Masibhale



e

E



Usuku:



Masibhale

Phinda ubhale le misho ufake izimpawu zokubhala ezifanele.



kungabe uyawathanda amakati

igama lekati lami nguthebe

ujabu nomimi bathanda ukudlala ibhola lezinyawo

usuku lwami lokuzalwa lungoMandulo



Masizijabulise

Yenza isikhangiso ngesilwane esilahlekile. Gcwalisa amagama adingekayo ezikheleni ukuqedela isikhangiso. Dweba-ke manje isithombe ukukhombisa ukuthi isilwane lesa sibukeka kanjani.

## SIZA SILAHLEKELWE



Gcwalisa ngohlobo lwesilwane.

Anizange nisibone isilwane sami?

\_\_\_\_\_

Igama lesilwane sami ngu-

\_\_\_\_\_

Uma usithola lesi silwane ngicela ushayele

(Gcwalisa igama lakho.)

kule nombolo \_\_\_\_\_

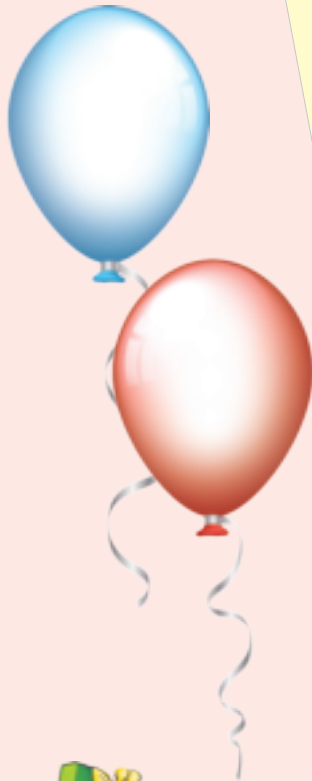
(Gcwalisa inombolo yakho yocingo.)

Isilwane sami sibukeka kanje  
(Dweba isithombe sesilwane.)





Masifunde



Masibhale

Funda isimemo bese uphendula imibuzo.

Ngubani onomcimbi?	
Uzoba neminyaka emingaki yobudala ngalolo suku?	
Uzoqala ngasikhathi sini umcimbi?	
Umcimbi uzophela ngasikhathi sini?	
Lunini usuku lomcimbi?	
Ithini inombolo nomgwaqo wakubo kaThabo?	

Amagama  
okubhekiswa

uzoba  
mhla  
lithi



Sisebenza ngamagama

Funda amagama ulalele imisindo.  
Manje bhala imisho yakho emibili encwadini  
yakho yokubhalela.

gqoka	gxoba	ulwandle
isigqoko	gxuma	ulwesine
umgqigqo	igxolo	ulwazi

Bhala imisho emibili ngosuku lwakho lokuzalwa.

Masibhale



Blank writing lines for practicing writing two words from the table above.



Masibhale

Kopisha umusho.

Uzokuza emcimbini wami?

Blank writing lines for practicing copying the sentence 'Uzokuza emcimbini wami?'.



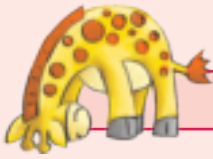
Kopisha lezi zinhlamvu.

Masibhale



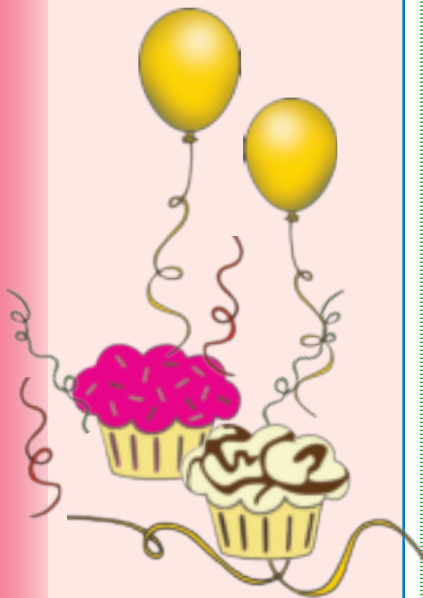
Handwriting practice box for the letter 'f'. It shows a solid 'f' followed by a dotted 'f' for tracing.

Handwriting practice box for the letter 'j'. It shows a solid 'j' followed by a dotted 'j' for tracing.



Masenze lokhu

Hlobisa ikhadi  
lesimemo.  
Gcwalisa leli khadi  
lesimemo somcimbi  
wakho.



Masibhale

Phinda ubhale umusho ngamunye uwuqale ngokuthi "Izolo".



## Woza emcimbini wami!

Ngihlanganisa iminyaka \_\_\_\_\_.

Umcimbi wami uzoba \_\_\_\_\_.

Uqala ngehora \_\_\_\_\_

uphele ngehora \_\_\_\_\_.



Ikheli lami lithi:

Inombolo yomuzi \_\_\_\_\_



Umgwaqo \_\_\_\_\_



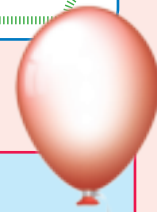
Indawo \_\_\_\_\_

Ngicela usho uma uzophumelela.



Inombolo yami \_\_\_\_\_

Isimemo sivela \_\_\_\_\_



Namuhla wusuku lwami lokuzalwa.

Izolo

Namuhla liyana.

Izolo

Namuhla libalele.

Izolo



Masibhale

Emushweni ngamunye dwebela igama lomuntu, bese ukokelezela isenzo esisitshela kabanzi ngokuthi lowo muntu wenzani.



UJabu ugijima uya esikoleni.

UPhuza ukhahlela ibhola.

UMimi ufunda incwadi.

UCebo ukhuluma nocingo.



UPhumi uphethe ithedi yakhe.

UBongi uthenga ikati.

UBabo udlala ibhola lezinyawo.

UMimi udla amazambane.



Masizijabulise

Badala kangakanani? Thola imigqa ekhombisa amakhekhe abo osuku lokuzalwa ubale amakhandlela. Manje gcwalisa amagama abo neminyaka yabo ethebhuleni.

uPeter 3

uThabo 7

uCandy 9

uLulu 6

uJohn 5



Igama	Ubudala

Igama	Ubudala



Masifunde



## Isikhukhukazi esingumama namachwane aso

Kwasho ichwane lokuqala elincane,  
liphoxeka linyakazisa umzimba  
kancane.

Kwasho ichwane elilandelayo,  
linyakazisa amahlombe kancane.

Sengathi bengingathola  
isibungu esincane  
esikhuluphele.

1



Sengathi bengingathola  
umnenke okhuluphele.

2



Kwasho ichwane lesithathu,  
linswininiza kancane.

Kwasho ichwane lesine, ngezwi  
elincane elinosizana.

3

Sengathi bengingathola  
ukudla okuncane okuphuzi.



4

Sengathi bengingathola  
ikhasi elincane eliluhlaza.



Kwasho ichwane lesihlanu, ngezwi elincane elikhalayo kancane.

"Bheka lapha," kusho umama, esho esesivandeni esiluhlaza.



Sisebenza ngamagama

Funda amagama ulalele imisindo. Manje bhala imisho yakho emibili encwadini yakho yokubhalela.

Amagama okubhekisiswa

ichwane  
kancane  
lapha

ichwane	nswininiza	nyamalala
chwaza	nswinya	nyathela
ichweba	inswane	inyama

Kopisha umusho. Masibhale



Amachwane ayaqhwanda



Kopisha lezi zihlamvu. Masibhale



g

ly

# A machwane amancane amahlanu (iyaghutshwa)



Masenze lokhu

Funda indaba ngamachwane amancane amahlanu bese uzama ukuyifunda kanyekanye nabangani bakho. Nikezanani ithuba ngamunye nibe ngelinye lamachwane. Oyedwa wenu kumele abe ngunina wamachwane.



Masibhale Kokelezela igama elifanele.

Izolo **ngiye/ngiya** ngayodlala noBongi kubo.

Kusasa **ngiye/ngizoya** esikoleni.

Ngesonto elidlule **ngabona/ngibona** amachwane.

Manje **ngiyadlala/ngidlale** nekati lami elisha.



Masibhale Qedela lezi zibalo zamagama.

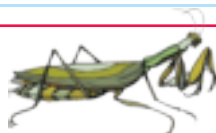
dlula + imithi =



guqa + thandaza =



thwala + imbiza =



thusa + amagwababa =



gola + izintethe =



khala + ikhukhu =





Masizijabulise

Gcwalisa la magama emabhokisini emisindo esondweni elikhulu. Dweba umugqa phezu kwawo uma sewuqedile ukuwabhala emabhokisini afanele.

isinkwa

mcele

khweza

inkwali

mlinde

inyama

imvelo

ikhwapha

inyoni

insingo

kucwebile

umlenze

isinkwe

mcebise

mcinelele

cwilisa

imvula

inyongo

isikhwili

umlisa

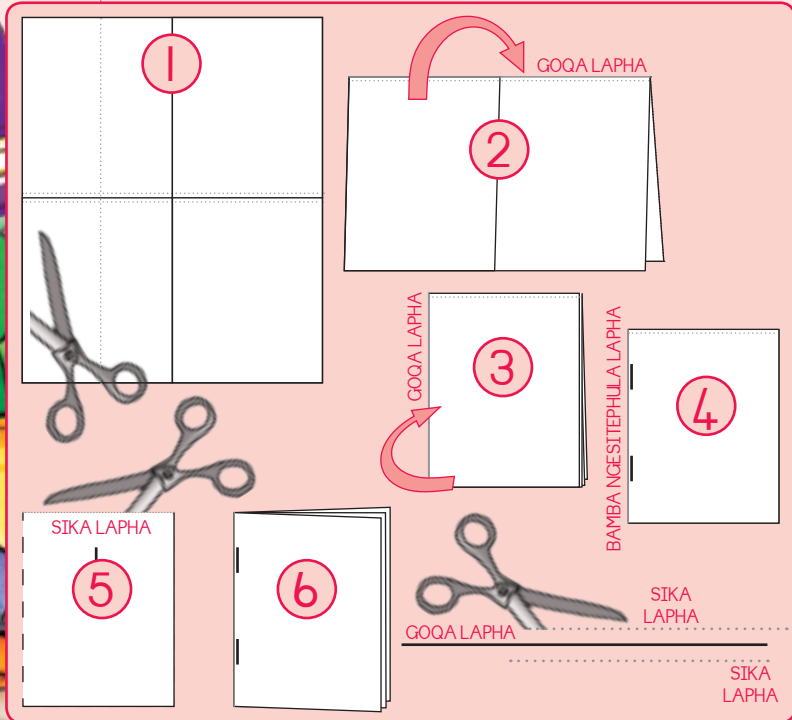
insimbi

cwe



**Masifunde**

Yenza leli bhuku lezinto ezisikwayo ukuze ukwazi ukufunda indaba yemvubu nofudu. Goqa emigqeni bese usika emigqeni yamachashazi.



**Masikhulume**

Yifunde-ke manje indaba yemvubu nofudu. Yindaba eyiqiniso. Xoxa nabangani bakho niveze ukuthi bahle kanjani laba bangani abayizilwane.



**Masibhale**

Phinda ufunde indaba yemvubu nofudu bese ubhala imisho emi-5 uxoxe yona le ndaba.

---

---

---

---

---

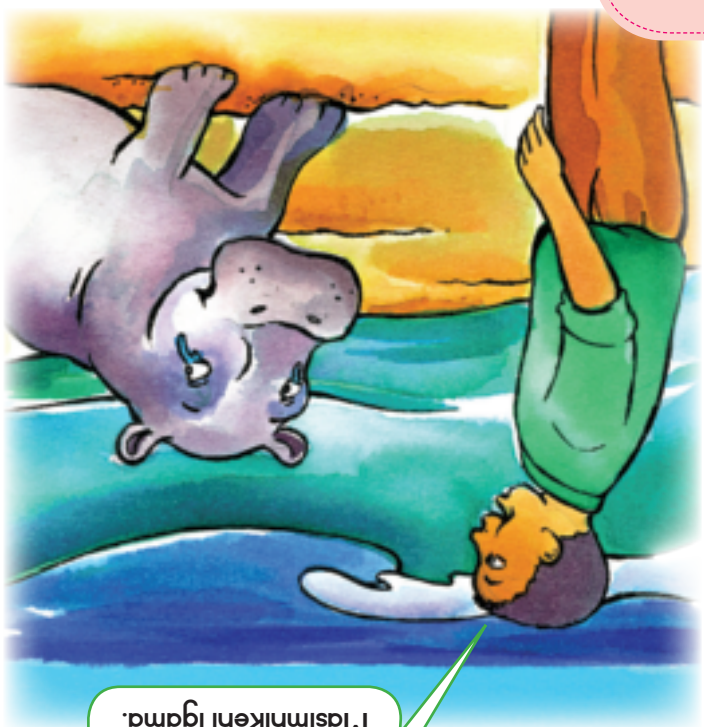
---

---

---



8



Lo mtwana wemvubu unenhlanhla. Masimnikeni igama.

b



Woza, Owen. Sizokuhambisa esiqiwini sezilwane.

Bamhambisa u-Owen esiqiwini. Wahla esivandeni esinechibi elikhulu.

Goqa emgqeni ongewona amachashazi

Sika emgqeni wamachashazi emva kokubamba incwadi yakho ngesiteyiphula.

Kamva u-Owen wakhula wahlangana nentombazana yemvubu eyayibizwa ngoCleo. Namuhla uhlala ngentokozo enkulu noCleo.

Bamba ngesiteyiphula laphta



Goqa emgqeni ongewona amachashazi

16



# Imvubu nofudu

1



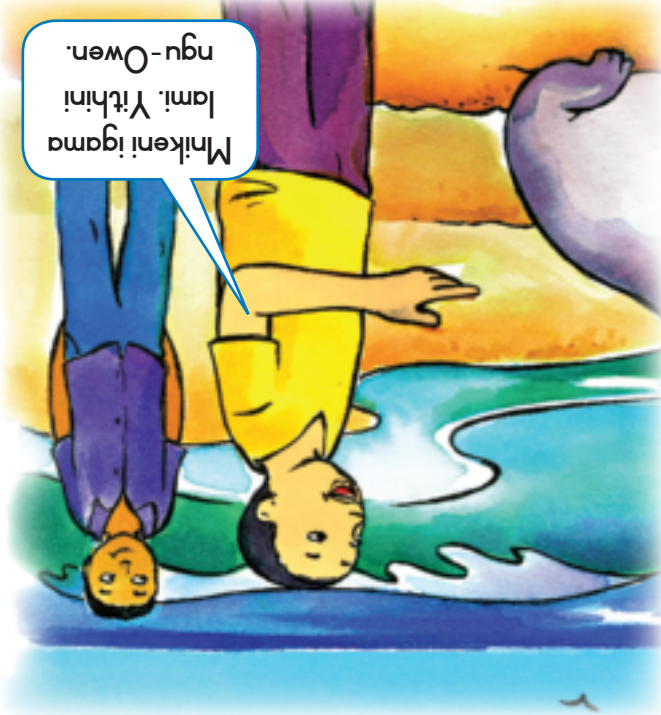
01



Ungubani igama lakho?



7



Mnikeni igama lam! Yithini ngu-Owen.

Bagcina ngokumdonsa umntwana wemvubu bamkhipha olwandle.

Umntwana wemvubu wayehlala ngokujabula nonina.



2

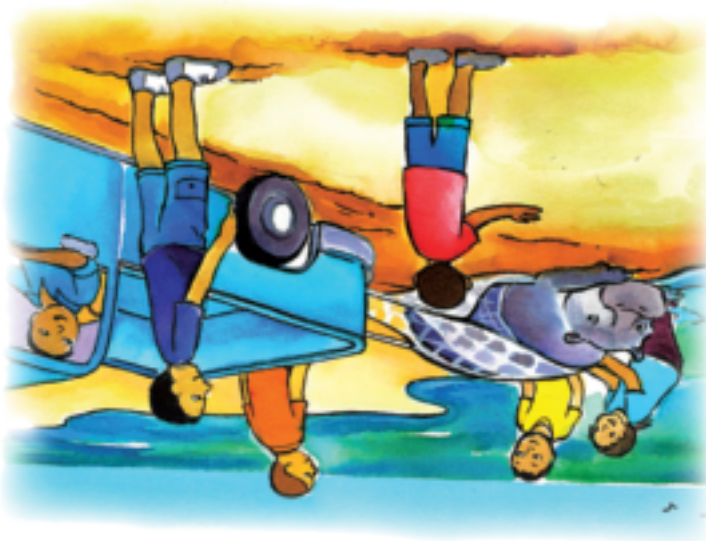
U-Owen wadlala nofudu oludala. Wayethanda ukugibela kuMzi emhlane.



15



9

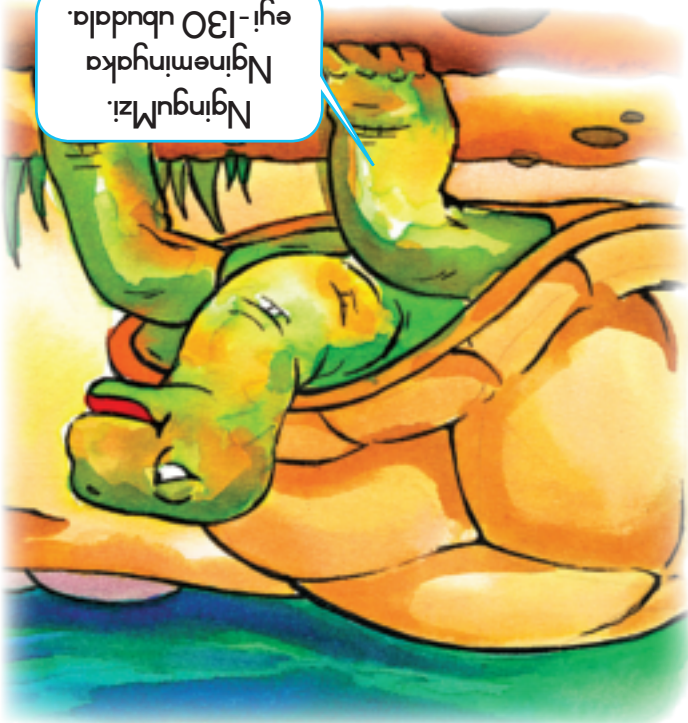


Bonke bazama ukusiza imvubu  
ukuthi ibuyele emhlabathini  
owomile. Basebenzisa amanethi  
kanye nezimoto ukumkhipha.

3

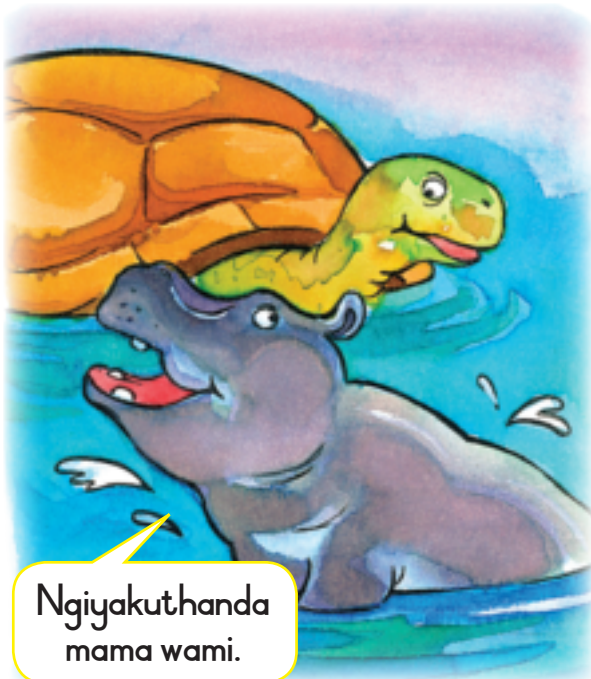


11



Esesesiqiwini wahlangana nofudu  
olukhulu.

14



Ngiyakuthanda  
mama wami.

Imvubu nofudu baba ngabangani  
abakhulu. Badla, babhukuda badlala  
ndawonye.



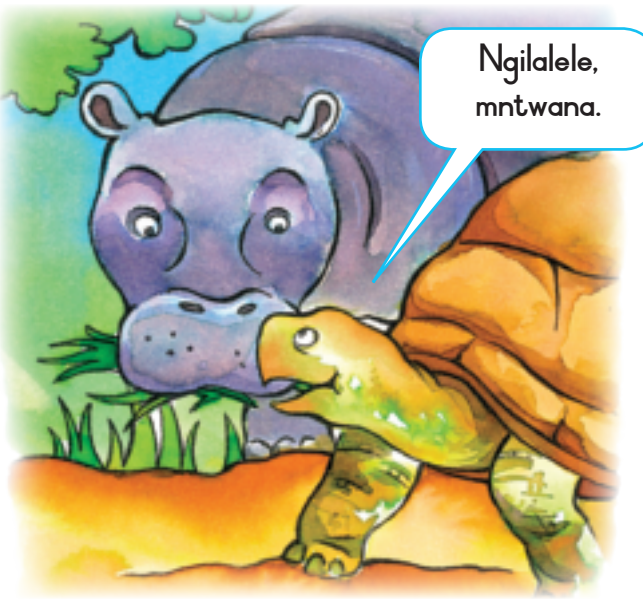
12



Uzoba  
ngumama  
wami?

Akazange amthole unina umntwana  
wemvubu.

13



Ngilalele,  
mntwana.



5



Sizani! Ngisizeni! Ngisemncane,  
angikwazi ukubhukuda.

Amgugula amanzi umntwana  
waya ezansi nomfula waze wafika  
olwandle.

4



Sizani! Sizani! Uphi  
umama wami?

Ngelinye ilanga kwafika isiphopho  
semvula. Imvula yagugula umntwana  
wemvubu walahleka.

Ufudu oludala lwabona ukuthi u-Owen  
usengumntwana. Kwadingeka ukuthi  
lumnakekele, lumtholele into azoyidla  
nendawo yokulala.

# Indikimba 7: Izolo, namuhla nakusasa

Ithemu 4: Amasonto 1 - 4

## 97 Izindaba ezivela kumngani 70

Ufunda incwadi.  
Uphendula imibuzo ekhethisayo emayelana nencwadi.  
Ubala izinsuku ezithile namalanga encwadini bese ekuqopha ekhalendeni.

## 98 Izinjongo zethu 72

Imisindo: ncw, ndw  
Ubhala imisho esebenzisa amagama awanikeziwe.  
Ulandelanisa imisho ngokwendaba.  
Ubhala ngezindaba zabo.  
Uhaya inkondlo.

## 99 Ikhonsathi esikoleni sethu 74

Ufunda uhlelo lwekhonsathi yesikole.  
Uphendula imibuzo ngohlelo lwekhonsathi.  
Imisindo: ngw, nkz.  
Ubhala imisho esebenzisa amagama awanikeziwe.  
Ubhala umusho ngokuthi bazokwenzani ngamaholidi.  
Kopisha lezi zinhlamvu H, h, I, i, J, j.

## 100 Kwenzekeni emva kwekhonsathi 76

Ngokwamaqembu khethani into ethile ohlelweni lwekhonsathi niyethule klasini.  
Uqagela ukuthi indaba izophela kanjani.  
Uqedela ibhamuza lokugcina lenkulumo endabeni.  
Uqondanisa imisho neziphetho ezifanele zayo.  
Iphazili lamagama.

## 101 Isikhathi 78

Ufunda indaba mayelana nezinto ezenziwa nguBusi.  
Uthola isikhathi esifanele indaba eyenzeka ngaso.  
Ugcwalisa ithebhula lezinto ezenziwa nguBusi nsuku zonke.  
Imisindo: njw, nqw.  
Kopisha lezi zinhlamvu K, k, L, l, M, m.



## 102 Izinsuku engimatasatasa ngazo 80

Ubhala ethebhuleni izinto ezizokwenziwa nsuku zonke ngokwezikhathi zazo.  
Usebenzisa inkathi edlule emishweni.  
Udweba izithombe ukuqedela izithombe.

## 103 Uveda unesonto elingemnandi 82

Ufunda indaba elixoxa ngoDeda.  
Uphendula imibuzo ebhekiswe endabeni.  
Uhlela amagama ngokwemisindo ngw, nkz.  
Ubhala imisho esebenzisa amanye amagama.  
Kopisha lezi zinhlamvu N, n, O, o, P, p.

## 104 Phezulu, phansi, phakathi nasemaceleni 84

Ulingisa okwenzeke kuDeda.  
Udweba izithombe ukukhombisa izinto azenza nsuku zonke zesonto.  
Ubhala umusho ngezithombe.  
Ugcwalisa amagama awaqondanise nezithombe.

## 105 Ukuzulazula 86

Ufunda indaba elixoxa ngamaholidi ezayo.  
Ugcwalisa uhlelo lwamaholidi ekhalendeni.  
Uphendula imibuzo ebhekiswe ohlelweni lwamaholidi.  
Uhlela amagama ngokwemisindo njw, nqw.  
Ubhala imisho esebenzisa amagama awanikeziwe.  
Kopisha lezi zinhlamvu Q, q, R, r, S, s.

## 106 Sisazulazula 88

Uthola izifundazwe ebalazweni.  
Usebenzisa izimpawu ezifanele zokubhala.  
Usebenzisa izimpawu emishweni bese ethola izinhlobo zemisho.  
Ubhala izihloko ezifanele zezincwadi.  
Uqagela ukuthi izincwadi zimayelana nani.

## 107 Umndeni wami nezilwane zami 90

Ufunda indaba elixoxa ngomndeni nezilwane ezingabangane.  
Uqedela ithebhula ngamalungu omndeni ngaphansi kwezihlokwana ezinikeziwe.  
Imisindo: ndw, ngw.  
Ubhala imisho esebenzisa amagama awanikeziwe.  
Kopisha lezi zinhlamvu T, t, U, u, V, v, W, w, X, x, Y, y.

## 108 Yini ekhethekile? 92

Umsebenzi wokudlala ohlanganisa amachashazi.  
Uphinda abhale imisho esebenzisa izimpawu ezifanele zokubhala.  
Uthola izenzo namabizo.  
Uqedela isitifiketi semikomelo yelungu lomndeni.

## 109 Ukubhala indaba 94

Uxoxa nomngani ngesakhiwo sendaba.  
Ugcwalisa uhlelo lwendaba esebenzisa izihlokwana azinikeziwe.  
Ulandela imiyalelo yencwadi enezindaba ezisikwayo.

## 110 UJojo nesiqu sikabhontshisi 97

Uphendula imibuzo ngeziphicaphicwano.

## 111 UJojo nesiqu sikabhontshisi 98

Ufunda indaba ngoJojo nesiqu sikabhontshisi.

## 112 UJojo nesiqu sikabhontshisi (iyaqhutshwa) 110

## 112b UJojo nesiqu sikabhontshisi (iyaqhutshwa) 112





Masifunde



24 Crest Road  
Seaville  
Empangeni  
3880

20 Ncwaba 2015

Bongi Othandekayo

Kube mnandi ukukubona ebholeni lomnqakiswa izolo.

Simatasatasa kakhulu lapha esikoleni. NgoLwesihlanu oluzayo sizoba nekhonsathi lesikole. Kunamantombazana azokwenza umdanso wesintu. Abafana bazofunda inkondlo kaMzi nofudu. UJabu uzoba usomahlaya ekhonsathini.

Kumnandi esikoleni. Ngesikhathi sokudlala ngiba noZinhle noLizi. Izolo sidlale umacashelana. UZinhle ucashe endlini yokudlala esesihlahleni. Simfune samfuna phansi asangamthola. Ngize ngamemeza ngathi, "Zinhle, phuma manje!" Kwaba yikhona simthola.

Sicela ukuphinda sikubone futhi uma kunebhola lomnqakiswa.

Yimina  
uSuzi





Masibhale

Phinda ufunde incwadi futhi bese ubeka uphawu ✓ empendulweni efanele.

Ubani obhale incwadi?	
A	uBongi
B	uSuzi
C	uZinhle

Uzokwenzani uLizi ekhonsathini lesikole?	
A	Zodansa
B	Uzoba usomahlaya
C	Uzofunda inkondlo

Lizoba ngayiphi inyanga ikhonsathi?	
A	ngoNcwaba
B	ngoMandulo
C	ngoMfumfu

Obani abangani bakaSuzi?	
A	uZinhle noRobbie
B	uZinhle noLizi
C	uLizi noSindi



Masibhale

Funda incwadi ngokucophelela. Zama ukuthola izinsuku nokuthi ngoLwesingaki olubhalwe encwadini. Beka uphawu kuzo ekhalendeni. Manje phendula imibuzo.

Ncwaba						
uMsombuluko	uLwesibili	uLwesithathu	uLwesine	uLwesihlanu	uMgqibelo	iSonto
				1	2	3
4	5	6	7	8	9	10
11	12	13	14	15	16	17
18	19	20	21	22	23	24
25	26	27	28	29	30	31

USuzi ubhale incwadi ngaluphi usuku?	
Uyibhale incwadi kungolwesingaki?	
Udlale umacashelana ngaluphi usuku?	
Udlale umacashelana kungolwesingaki?	



Sisebenza ngamagama

Funda amagama ulalele imisindo.  
Manje bhala imisho yakho emibili encwadini yakho yokubhalela.

incwadi	indwangu
incwincwi	elandwa
ncwela	indwe

ncwela	indweba
wagencwa	indwangu
uyamuncwa	sindwa

Amagama okubhekisiswa

nokuthi  
kuzo  
beka  
bese



Masibhale

Nikeza le misho izinombolo zilandelane zisuke koku-1 ziye koku-3.

USuzi uzodansa ekhonsathini lesikole ngoMandulo.

USuzi ubhalele uBongi incwadi.

OSuzi noLizi bahlangene ebholeni lomnqakiswa.



Masibhale

Bhala izindaba eziqoqwe nguwe.

Izolo ngi-

Namhlanje ngi-

Kusasa ngizo-

Ngenyanga ezayo ngizo-





Masizijabulise

Eqenjini lakho,  
zijwayezeni ukufunda  
inkondlo kaMzi, ufudu,  
nomntwana wemvubu.



Iculo lemvubu ejabulile  
Umntwana omncane wemvubu  
waphaxazisa amanzi ngekhala.  
Wayehamba eduze nomfula  
ephaxazisa udaka ngezinzwane.  
Kwafika uMzi  
eqhamuka ejikeni.  
UMzi nomntwana wemvubu baba  
abangani abakhulu.





Masifunde



Uhlelo lwekhonsathi esikoleni samaBanga  
aPhansi iLesedi

Usuku: 26 Newaba 2015

Isikhathi: Kusukela ngehora lesi-6:00  
ntambama kuya 7:30 ntambama

Okuzokwenzeka

- 1 Ukuvula nguThishomkhulu, Nkk A Nkuna
- 2 Inkondlo ngoMzi nemvubu
- 3 Umdanso wesintu
- 4 Imiklomelel yamaBanga 1, 2 nelesi-3
- 5 Umculo wabeBanga lesi-3
- 6 UJabu unguSomahlaya

Kungenwa Mahhala

Kuzothengisa amakhekhe namaswidi  
ingakaqali ikhonsathi.



Masifunde

Funda uhlelo lwekhonsathi lesikole, bese uphendula imibuzo.

Ikhonsathi ingaluphi usuku?	
Liqala ngasikhathi sini liphele ngasikhathi sini?	Liqala ngehora _____ Liphele ngehora _____
Ubani uthishomkhulu wesikole?	
Ubani ozoba ngusomahlaya?	
Iliphi ikilasi elizocula?	
Imaphi amakilasi azothola imiklomelel?	
Yini ezothengiswa ekhonsathini?	
Kuzongenwa ngamalini ekhonsathini?	

Amagama okubhekiswa

sini  
ozoba  
usuku  
ubani



Sisebenza ngamagama

Funda amagama ulalele imisindo.  
Manje bhala imisho yakho emibili encwadini yakho yokubhalela.

ipendwe	incwadi	egundwa	bugencwe
isindwa	zigenywa	elandwa	encwadini
lubondwa	incwasimende	kugandwa	lincwelwa



Uyafuna ukuya ekhonsathini lesikole? Nikeza isizathu.

Masibhale

Handwriting practice area with multiple horizontal lines for writing.



Kopisha lezi zinhlamvu.

Masibhale



Handwriting practice box for the letter 'h'. Shows a solid 'h' and a dotted 'h' for tracing.

Handwriting practice box for the letter 'H'. Shows a solid 'H' and a dotted 'H' for tracing.

Handwriting practice box for the letter 'i'. Shows a solid 'i' and a dotted 'i' for tracing.

Handwriting practice box for the letter 'J'. Shows a solid 'J' and a dotted 'J' for tracing.



Handwriting practice box for the letter 'j'. Shows a solid 'j' and a dotted 'j' for tracing.

Handwriting practice box for the letter 'J'. Shows a solid 'J' and a dotted 'J' for tracing.



Masenze lokhu

Iqembu lakho malikhethe okukodwa ohlelweni lwekhonsathi lizame ukukwenza. Manje -ke malikwenze phambi kwekilasi. Iqembu lakho malisho ukuthi kumele udlale yiphi indawo ezintweni ezisohlelweni. Ungafunda inkondlo, uzijwayeze ukudansa noma ucule iculo.



Masibhale

Make ubheke lezi zithombe. Khuluma nomngani wakho usho ukuthi ubona ukuthi indaba izophela kanjani. Manje gwalisa inkulumo yokugcina ukukhombisa ukuthi uyazi ukuthi uthisha uthini.



1

O, nginokudla okumnandi kwasemini namhlanje.



2

Ngiphe ukudla kwakho, kungenjalo ngiyakushaya.



3

Ngiyakucela, ungakuthathi ukudla kwami.



4



Masibhale

Dweba umugqa uye engxenyeni esebhokisini elisasibhakabhaka ngakwesobunxele nengxenyeni esebhokisini elisatshani ngakwesokudla. Qondanisa isiqalo somusho ebhokisini eliluhlaza okwesibhakabhaka nesiphetho esifanele ebhokisini eliluhlaza okotshani.

UPhumi udle ukudla kwakhe

Ngidle isemishi

Ngibize uthisha

Uthisha umthethisile uJimi

ngoba uJimi ubefuna ukuthatha ukudla kwami

ngoba ubeselambile.

ngoba akaziphathanga kahle.

ngoba bengilambile.



Masizijabulise

Thola bese ukokelezela amagama asebhokisini avumelana nesithombe. Manje dweba umugqa usuke egameni uye esithombeni esifanele. Khumbula, amagama amanye ayavundla amanye ayehla.

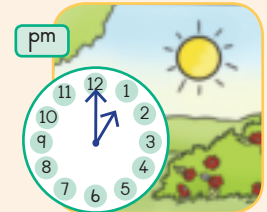
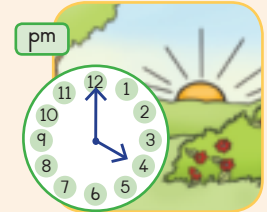
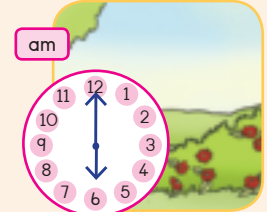
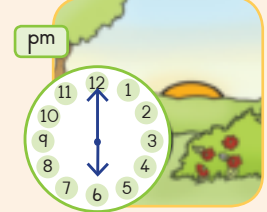
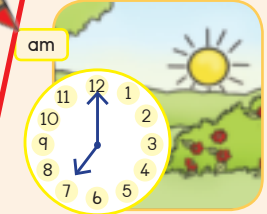
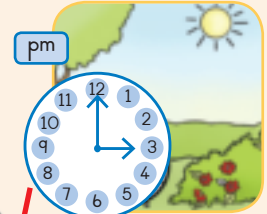
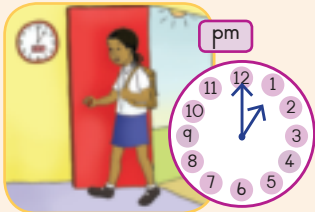
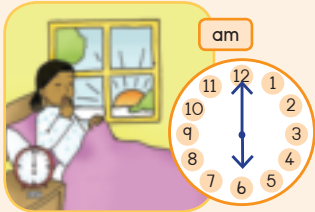
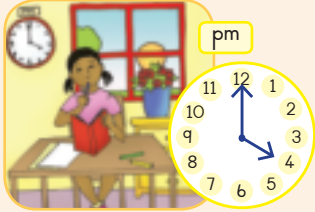
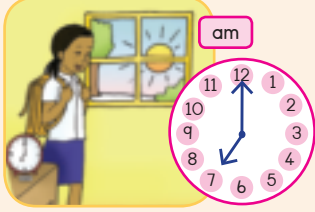
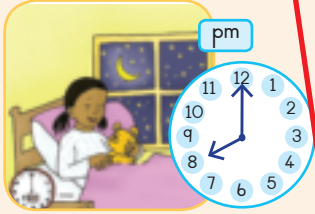
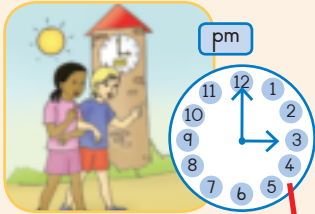
i	h	h	a	s	h	i	w	m	i
m	n	i	m	p	e	m	p	e	h
p	u	m	p	o	m	p	i	s	h
i	m	p	o	f	u	o	u	f	a
s	t	e	u	n	m	n	y	g	l
i	m	p	i	g	o	g	o	l	a
k	l	p	i	h	h	o	l	o	b
i	m	p	a	n	g	e	l	e	n





Masifunde

Funda indaba bese uqondanisa isithombe sewashi nomusho ofanele. Sikwenzele umusho wokuqala.



NgoMsombuluko uBusi uvuka ekuseni ngehora lesi-6 nqo.

Uya esikoleni ekuseni ngehora lesi-7 nqo.

Ntambama ngehora loku-1 nqo uyabuya eze akhaya.

Udlala noPhumi ntambama ngehora lesi-3 nqo.

Wenza umsebenzi wesikole ntambama ngehora lesi-4 nqo.

Udla ukudla kwakusihlwa ngehora lesi-6 nqo.

Ulala ngehora lesi-8 nqo.



Masibhale

Gcwalisa okwenziwa nguBusi ngosuku ngalunye ngalezi zikhathi.

Ngehora lesi-6 nqo	
Ngehora lesi-7 nqo	
Ngehora loku-1 nqo	
Ngehora lesi-3 nqo	
Ngehora lesi-4 nqo	
Ngehora lesi-6 nqo	
Ngehora lesi-8 nqo	



Sisebenza ngamagama

Funda amagama ulalele imisindo.  
Manje bhala imisho yakho emibili encwadini yakho yokubhalela.

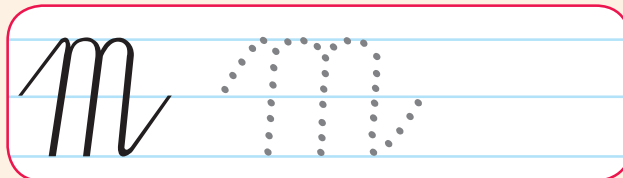
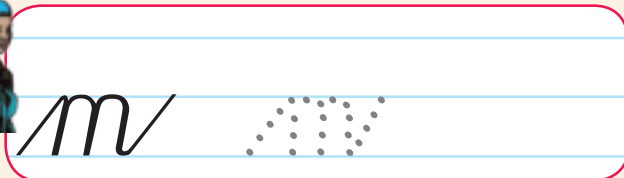
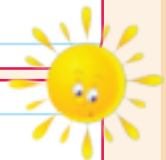
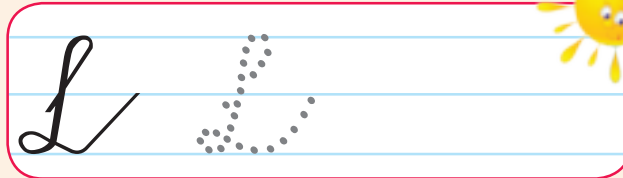
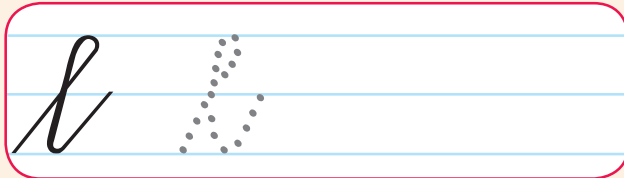
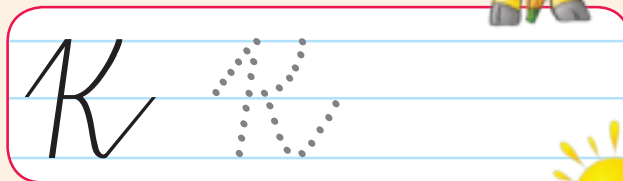
iyasindwa	zezincwadi	emqondweni	zigencwe
ophondweni	kunencwadi	uyazondwa	zincwelwe
esondweni	ngencwadi	iyakhandwa	bugencwe

Amagama okubhekisiswa

eze  
lesi  
ekuseni  
uvuka



Kopisha lezi zinhlamvu. Masibhale



# Izinsuku engimatasatasa ngazo



Masenze lokhu

Cicwalisa izinto ozenza usuku ngalunye ngalezi zikhathi.



Ngehora lesi-6 nqo

Ngehora lesi-7 nqo

Ngehora loku-1 nqo

Ngehora lesi-3 nqo

Ngehora lesi-4 nqo

Ngehora lesi-6 nqo

Ngehora lesi-8 nqo



Masibhale

Uma siguqula ukamisa wokugcina wesenzo abe ngu-e kusho ukuthi isenzo sesenziwe sadlula. Funda le misho ehamba ngamibili. Guqula ukamisa wokugcina abe ngu-e egameni elihlikihlwe ngombala bese ulisebenzisa ukuqedela umusho wesibili.

UBusi noPhumi bathanda ukudlala.



Ngesonto eledlule (badlale) ibhola lomnqakiswa.

UJabu ugxuma njengeselesele.

Izolo \_\_\_\_\_ njengeselesele.

UBusi upheka inhlanzi.

Izolo \_\_\_\_\_ inhlanzi.

UPhumi ukhahlela ibhola kakhulu.

Izolo \_\_\_\_\_ ibhola kakhulu.



Masibhale

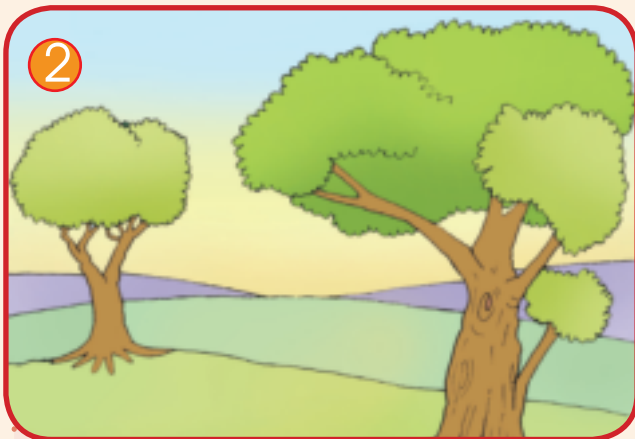
Dweba umugqa usuke emagameni akukholamu esatshani uye emagameni akukholamu esasibhakabhaka anencazelo ephikisayo.



Masizijabulise

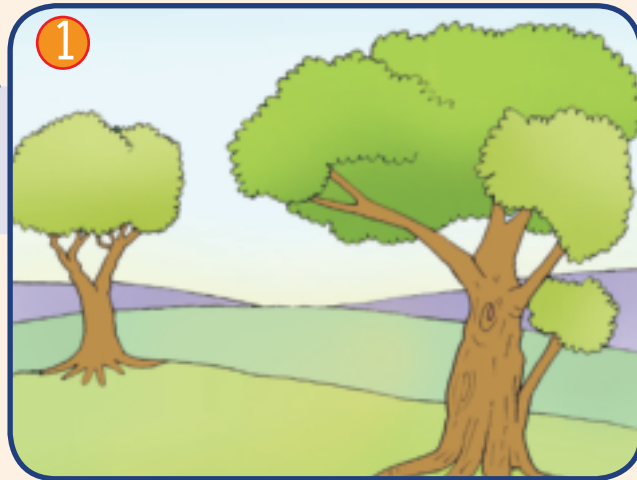
Dweba lezi zithombe ezintathu.

1 Yihora lesi-8 nqo ekuseni. Ilanga liyashisa. Izulu libalele.



2 Ikati ligibele lakhuphuka esihlahleni.

3 Yisebusuku, ikati liqala ukwehla.



phezulu		ukujabula
yima		ebusuku
totoba		kufushane
kusha		phakathi
emini		kudala
ngaphandle		yebo
ukudumala		hamba
cha		shesha
kude		phansi



Masifunde

UDeda ube nesonto elingemnandi. Useliwe ngoMsombuluko. Ushiywe yibhosi wafika sekudlule isikhathi esikoleni. "Kungani ufika sekudlule isikhathi kangaka, Deda?" kubuza uthisha.



NgoLwesibili uye esikoleni kodwa washiya isikhwama sesikole ebhasini. Uma engena ekilasini ubephethe ibhola kuphela. "Siphi isikhwama sakho sesikole, Deda?" kubuza uthisha.

NgoLwesithathu Uvuke ekuseni, wangena ebhasini. Yahamba yahamba ibhosi. Ukuthi nje uDeda ubesebhasini okungeyona. Imuthathe yamusa kwesinye nje isikole. "Uphi uDeda namhlanje?" kubuza uthisha.



NgoLwesine uDeda ubengawutholi umfaniswano wakhe. Waya esikoleni eggoke izingubo zokubhukuda. "Uphi umfaniswano wakho, Deda?" kubuza uthisha.

NgoLwesihlanu uDeda uvuke ekuseni kakhulu. Uye esikoleni kusemnyama ngaphandle. Ubekhathele kakhulu wasuke wazumeka ekilasini. "Ulaleleni, Deda?" kubuza uthisha.



NgoMgqibelo uDeda uye esikoleni kodwa wathola isango likhiyiwe. Awuzwa, Deda. Akufundwa ngoMgqibelo.



Masibhale

Funda indaba bese uphendula imibuzo.

Kungani uDeda eseliwe ngoMsombuluko?

Kungoba

UDeda waya nebhola esikoleni lakhe ngaluphi usuku?

UDeda waya esikoleni egqoke izingubo zokubhukuda ngaluphi usuku?

Kwenzekeni uma uDeda eya esikoleni ngoMgqibelo?



Sisebenza ngamagama

Funda amagama ulalele imisindo.  
Manje bhala imisho yakho emibili encwadini yakho yokubhalela.

Amagama okubhekisiswa

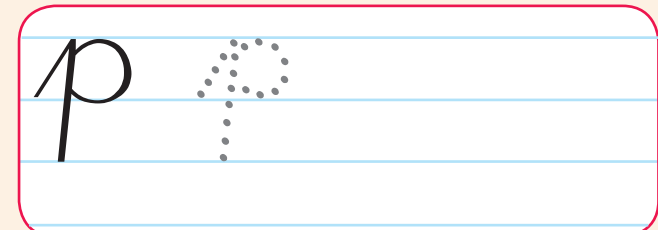
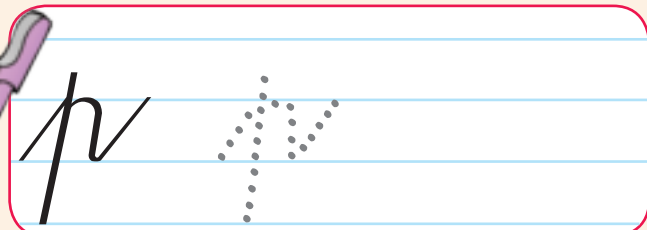
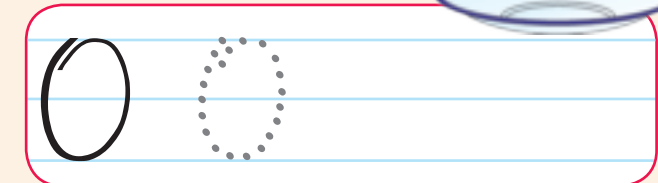
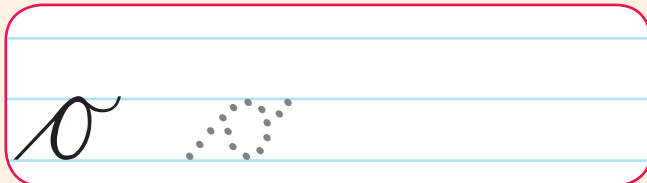
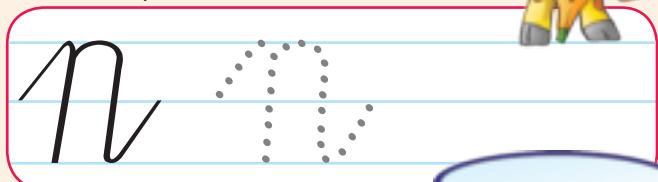
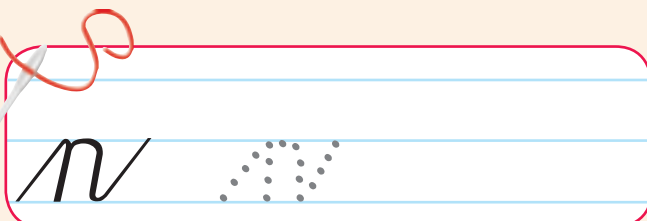
uye  
kodwa  
siphi  
emva

ingwazi	inkwali	iyasengwa	eNkwezela
ingwenya	isinkwa	esangweni	izinkwa
ingwe	isinkwe	abongwe	inkwethu



Kopisha lezi zihlamvu.

Masibhale



# Kwenzekeni ku Deda?



Masenze lokhu

Dlalani umdlalo okhombisa ukuthi kwenzekeni kuDeda ngosuku ngalunye. Umuntu ngamunye ake abe nguDeda. Dedelanani. Ningade nidedelana futhi umuntu ngamunye ake abe nguthisha.



Masibhale

Dweba isithombe esikhombisa ukuthi wenzani ezinsukwini zesonto. Cwcalisa izinsuku.




Masibhale

Bhala phansi lokho okwenza ngalezi zinsuku.



NgoMsombuluko	
NgoLwesibili	
NgoLwesithathu	
NgoLwesine	
NgoLwesihlanu	
NgoMgqibelo	
NgeSonto	





Masizijabulise

Yakha amagama usebenzisa lezi zihlamvu, bese uwabhala ezikheleni. Manje thola igama elihambisana nesithombe.



i → iso

ubu → so

iso →



du →

ba → ba

do →

le →

ido → lo

isi →



su →

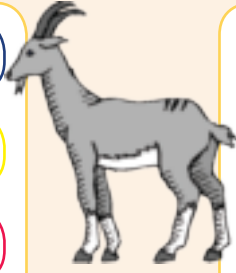
umu → sa

bu →

bo →

ye → na

mi →



ibu →

imbu → zi

le →

si →

bu → za

ba →



i →

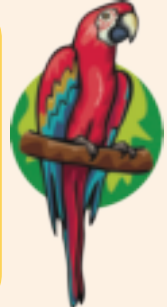
si → sho

be →

i →

uba → ni

inyo →



li →

ba → hle

si →



Masifunde

Sekuzoba yisikhathi samaholidi. Bonke abantwana bakhuluma ngezinto abazozenza ngamaholidi esikole. Izingane ezinhlanu zizoya emakhaya azo. Othisha bazo bazicele ukuthi zigcwalise emalungiselelweni azo lokho ezizokwenza ngamaholidi.



## Ukulungiselela amaholidi

Igama	Usuku	Izindawo	Bazoyaphi?
uMimi	ngoLwesine	eGoli	Bazoya emcimbini kamzala.
uDeda	ngoMsombuluko	ePolokwane	Bazovakashela ugogo.
uBongi	ngoLwesithathu	eThekwini	Bazoya ebhishi.
uJabu	ngoLwesihlanu	eMbombela	Bazoya eKruger Park.
uBusi	ngoMgqibelo	eMthatha	Bazoya emshadweni.
			Gcwalisa ozokwenza.



Masibhale

Funda imibuzo. Bhala phansi impendulo yakho ethebhuleni.

Ngubani ozoya eGoli?	
UDeda uzokwenzani ngoMsombuluko?	
Ngubani ozoya ebhishi?	
UBusi uzokwenzani ngoMgqibelo?	
Ngubani ozoya eKruger Park?	
Uzoyaphi wena?	



Sisebenza ngamagama

Funda amagama ulalele imisindo. Manje bhala imisho yakho emibili encwadini yakho yokubhalela.

kuhanjwe

inqwaba

kubunjwa

nqwaza

injwayelo

kuhenqwe

kuhanjwa

umnqwazo

Iwathunjwa

esihenqweni

kubanjwa

enqwabeni

Amagama okubhekisiswa

ozoya

isonto

lapho

ugogo



Masibhale

Kopisha lezi zinhlamvu.



q

Q

r

R



s

S



Masenze lokhu

Dweba umuqga okhombisa ukuthi ingane ngayinye iyaphi.



uDeda

ePolokwane

ePolokwane

eMbombela

eGoli



uBongi

eGoli



uJabu

eMbombela



uMimi

eThekwini

uBusi

eMthatha



Masibhale

Phinda ubhale le misho usebenzise ofeleba kanye nawongqi.

izingulube zinemisila egoqene

indlulamithi inomqala omude

idube linemithende

indlovu inomboko omude



Masibhale

Qedela le misho usebenzisa izimpawu ezifanele ekugcineni.

Umusho obikayo siwuphetha ngongqi. (.)  
 Umusho obuzayo siwuphetha ngombuzi. (?)  
 Umusho obabazayo siwuphetha ngombabazi. (!)



Ngithanda amaswidi (.)	ukubika
Ungubani igama lakho	
Ungaweqi umgwaqo, kunemoto	
Uhlalaphi	
Nginothedibhe ophinki	
Ufundani	
Angibuthandi ubusika	
Qaphela, kunenyoka	



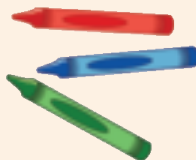
Masizijabulise

Bhala isihloko sencwadi ngayinye kulezi. Isihloko sencwadi sisitshela ukuthi incwadi imayelana nani. Tshela umngani wakho ukuthi ucabanga ukuthi incwadi imayelana nani. Nikeza izincwadi izinombolo ukukhombisa ukuthi ufuna ukuqala ngayiphi ulandelize ngayiphi. Qala ngenombolo 1 encwadini othanda kakhulu ukuyifunda, ugcine ngonombolo 4 wencwadi ongayithandi kahle.














Masifunde

Nginomndeni omkhulu. Namhlanje omzala basivakashela. Ugogo wami uyena osiqaphelayo uma umama eye **emsebenzini**.

Ngiyathanda uma abazala bami bevakasha ngoba sidlala ibhola nomasicashelane. Kwesinye isikhathi udadewethu omncane ufuna ukudlala nathi, **kodwa akakwazi**. Usemncane kakhulu.

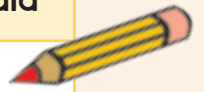
Sinezilwane eziningi. Nginenhlanzi enombala wegolide kanye nenyoni. Udadewethu unomdlwane nekati elihle elincane. Kwesinye isikhathi ikati **elincane** liyaye lifune ukudla inhlanzi yami.



Masibhale

Yenza uhla lwamalunga omndeni wakho.  
Yisho ukuthi ahlobene kanjani.

Igama	Ubuhlobo	Ubudala
UPhetro	Umzala	12



Usuku:

Igama	Ubuhlobo	Ubudala



Sisebenza ngamagama

Funda amagama ulalele imisindo. Manje bhala imisho yakho emibili encwadini yakho yokubhalela.

Amagama okubhekisiswa

ingwenya	indweba	kwasongwa	egundwa
kuhlungwa	balandwa	esangweni	kusindwa
kubongwa	emlandweni	emongweni	engqondweni

yenza  
ukwenza  
ncinza



Kopisha lezi zinhlamvu.

Masibhale



t T

w W

u U

x X

v V

y Y



# Yini ekhethekile?



Masenze lokhu

Silwane sini lesi? Hlanganisa amachashazi uthole ukuthi kuyini lokhu.



Masibhale

Bhala umusho ngamunye usebenzisa ofeleba kanye nesiphetho esifanele.



singaya epaki

Singaya epaki (?) 

umimi nobongi baya epaki

ungashwibeki uphakame kangaka

ngingalithatha ibhaluni





Masibhale



Masizijabulise

Uhlobene  
kanjani nawe?  
Ngumama  
wakho,  
ubaba noma  
udadewenu?

Amagama ayizenzo asitshela ukuthi kwenzekani. Funda umusho ngamunye udwebele igama eliyisenzo. Manje kokelezela umuntu noma into eyenza isenzo lesa.

Izinyoni ziyandiza.

Ikati liyagxuma.

Amadada ayabhukuda.

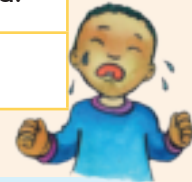
Izingane ziyadlala.



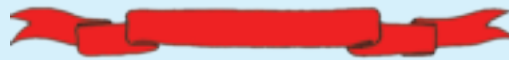
Iwashi liyahamba.

Intombazana iyacula.

Ingane iyakhala.



### Isipho esikhethekile selungu lomndeni



Gcwalisa igama lomuntu.

Chaza ukuthi uziphethe kanjani. Yini eyenza lo mndeni ube ngokhethekile?

Imiklomelo ikhishwe ngu-

Usuku

Dweba umuntu.



Masikhulume

Khuluma nomngani wakho ngendaba ozoyibhala.  
Manje gwalisa imibono yakho kuleli khasi.



Ukulungiselela  
indaba yami

Ubani osendabeni yakho?

Abalingiswa kanye  
nesizinda.

Indaba yenzeka kuphi?



Yenzeka nini indaba?

Isingeniso

Kwenzekani ekuqaleni kwendaba?

Umzimba

Kwenzekani phakathi nendaba?

Isiphetho

Iphela kanjani indaba?





# INGEMUVA LEKHAVA



## MAYELANA NOMBHALI

Bhala igama lakho.

Iminyaka yakho yobudala.

Lapho uhlala khona

8

ISINYATHELO 4: Sika emgqeni angewona amachashazi emva kokuhlenganisa ibhuku lakho ngesitepula.



# IKHAVA

Dweba isithombe lapha.

Bhala isihloko sencwadi lapha

Gcwalisa igama lakho (nguwe umbhali)

1

ISINYATHELO 1: Gcqa emachashazini awumugqa

5

Qhubeka nendaba yakho lapha.

Dweba isithombe lapha.

7

Bhala umzimba wendaba lapha.

Dweba isithombe lapha.



Dweba isithombe lapha.

Dweba isithombe lapha.

Qala indaba lapha.

Qedela indaba lapha.

2

7

3

9

Ohubeka nendaba lapha.

Bhala ukuthi kwenzekani ekupheleni kwendaba.

Dweba isithombe lapha.

Dweba isithombe lapha.

Masizijabulise

Qondanisa iziphicaphicwano nezithombe ezifanele.  
Manje gwalisa izimpendulo ezikheleni ezinikeziwe.  
Ungasebenzisa la magama azokusiza.



indlu

Ngimkhulu, ngimkhulu. Ngiphile ezikhathini zakudala. Ngiyini?



ihhashi

Umqala wami mude. Ngidla amakhasi ezihlahla. Ngiyini?



idayinoso

Nginamadlebe amade. Ngiyagxumagxuma. Ngiyijima kakhulu. Ngiyini?



i-ayisikhilimu

Ngithanda ukudlala. Ngithambile. Ngiyini?

indlulamithi

Ngimkhulu. Wena uhlala kimi. Ngiyini?



isambulela

Ngiluhlaza, ngiphuzi, ngimuhle. Ngiyini?

unogwaja

Ngimkhulu nginsundu. Ngiyijima kakhulu. Ngiyagxuma. Ngiyini?



ufudu

Ngiyabanda, nginoshukela, ungangidla. Ngiyini?

imbali

Ngiphatha indlu yami konke lapho ngiya khona. Ngiyini?



ikati

Ngivuke uma kufika imvula. Ngiyini?



Masifunde

Asinamali yokudla. Leliya zimuzimu elibi lisithathele isikhukhukazi sethu.



Hambisa inkomazi emakethe uyoyithengisa ukuze sithole ukudla.

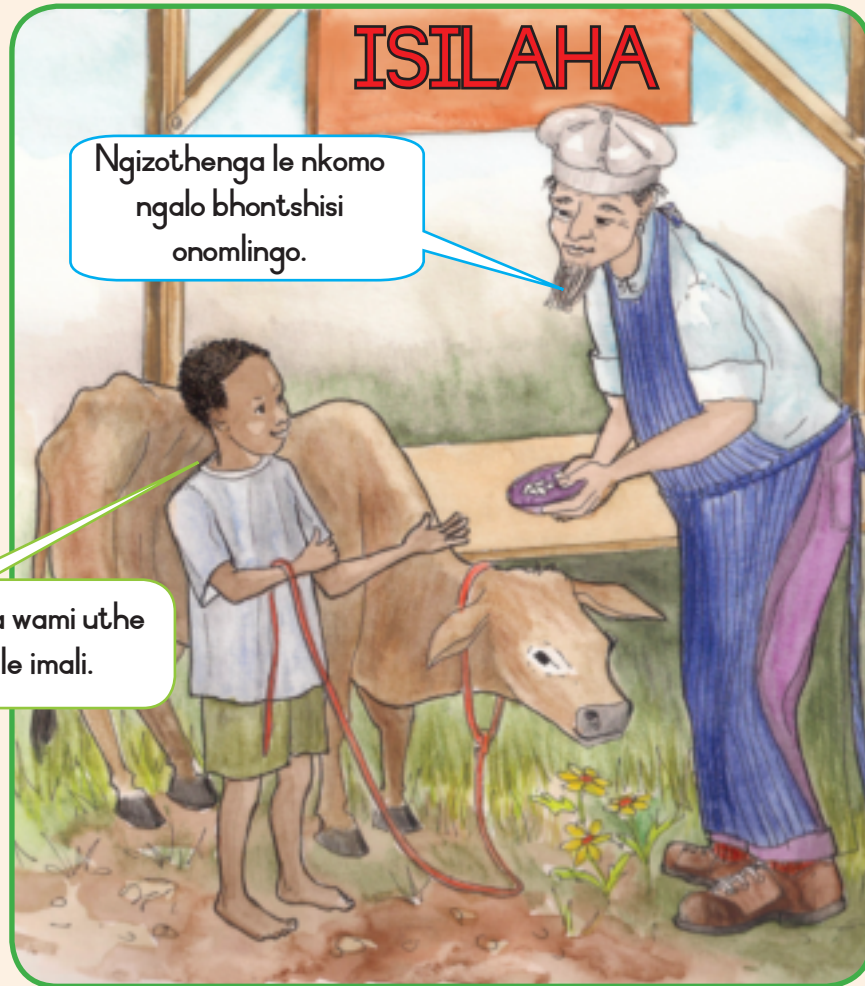
Kwakukhona umfana igama lakhe unguJojo. UJojo wayehlala nonina. Wayengenayise. Ngenkathi uyise esaphila izimuzimu elikhulu lantshontsha ihabhu lakhe kanye nesikhukhukazi esasizalela amaqanda egolide.

UJojo nomama wakhe babehlupheka kakhulu. Umama wakhe wantshela ukuthi ahambise inkomo emakethe ayoyithengisa.



Endleleni, uJojo wahlangana nomninisilaha, owamkhombisa obhontshisi abahlanu ababenomlingo. UJojo wamnika inkomazi wathatha ubhontshisi onomlingo.

Kodwa umama wami uthe ngimtholele imali.



Umuphe inkomo yethu ngenxa yobhontshisi abahlanu?

Umama kaJojo wathukuthela. Wajikijela ubhontshisi ngefasitela. Balala bengadlile noJojo ukudla kungekho.



Ngakusasa kwasekumi isiqu esikhulu esiphakeme sikabhontshisi sidlula indlu. UJojo wagibela kuso waya phezulu kakhulu.

Ngenkathi uJojo ephezulu, wabona ukuthi izimuzimu lalihlala khona lapho phezulu. Wabona ihabhu likayise kanye nesikhukhukazi sakhe. UJojo wathatha igolide wehlika nalo ngaso isiqu sikabhontshisi.



Ngosuku olulandelayo wagibela futhi uJojo esiqwini eseyolanda ihabhu likayise. Wayibona inkukhu kayise eyayizalela amaqanda egolide.

UJojo wathatha ihabhu nesikhukhukazi. Lavuka izimuzimu! Lamsukela lamgijimisa uJojo.

Uzithathe kubaba lezi zinto.

Ngiphe inkukhu!



UJojo wehla ngesiqu sikabhontshisi ngenkathi izimuzimu liza ligijima emva kwakhe.



# UJojo nesiqu sikabhontshisi (iyaqhutshwa)

UJojo wabiza umama wakhe. Weza egijima nembazo umama kaJojo.



Umama wakhe wasicanda isiqu ngejubane. Ngaphambi kokuthi izimu limbambe uJojo, sawa isiqu sikabhontshisi.



UJojo nomama wakhe bahlala kahle unomphela.





## Indikimba 8: Ubungani nokunakekelana

Ithemu 4: Amasonto 5 - 8

### 113 Isipho sikaBusi sosuku lokuzalwa 104

Ufunda indaba exoxa ngosuku lukaBusi lokuzalwa.  
Ufunda isikhangiso sebhayisikili.  
Uphendula imibuzo ebhekiswe endabeni.  
Ubhala umyalezo ekhadini losuku lukaBusi lokuzalwa.  
Uhlela amagama ngokwemisindo  
Imisindo: ndw, ngw.  
Ubhala imisho esebenzisa amagama awanikeziwe.  
Kopisha amagama lo, la.

### 114 Ngabe uzolithenga leli bhayisikili? 106

Uxoxa ngezikhango zomsakazo nezikamabonakude.  
Ulingisa okuzokhangiswa ngakho kumabonakude.  
Uphendula imibuzo ngokulingisa ngesikhango.  
Ubhala izindaba zabo.  
Ulebula isithombe sebhayisikili.

### 115 UBusi vthenga ibhayisikili 108

Ufunda indaba exoxa ngoBusi.  
Uphendula imibuzo ethile ebhekiswe endabeni.  
Uhlela amagama ngokwemisindo (gaxwa, izwi, ingoma, wamsiza).  
Kopisha amagama oma, osa.

### 116 Abangani beqiniso njalo-njalo 110

Uxoxa aphinde aqagele endabeni.  
Ugcwalisa amabhamuza enkulumo.  
Ubhala umlayezo emakhadini abangani.  
Ubhala isiphetho sendaba.  
Ulungisa amagama axubene.  
Kopisha amagama ina, iwa.

### 117 UVeda udlala ibhola lezinyawo 112

Ufunda indaba exoxa ngoDeda edlala ibhola lezinyawo.  
Wenza uhla lwamagama avela endabeni.  
Uphendula imibuzo ebhekiswe endabeni.  
Ubhala imisho yenkulumongqo.  
Uhlela amagama ngokwemisindo nkwi, njw.

Ubhala imisho esebenzisa amagama awanikeziwe.

### 118 UVeda ulimala unyawo 114

Unikeza izithombe izinombolo ukukhombisa ukulandelana kwezihlakalo.  
Ubhala umusho ngesithombe ngasinye.  
Usebenzisa izifinyezo.  
Uqondanisa amagama amqondo ofanayo.  
Umsebenzi wokuzijabulisa.

### 119 Ukusiza abanye 116

Ufunda indaba exoxa ngokusiza abanye.  
Uphendula imibuzo ebhekiswe etekisini.  
Ubhala imisho ngokusiza abanye.  
Uhlela amagama ngokwemisindo nqw, nzw.  
Ufunda amagama alalele imisindo.  
Kopisha amagama aba, emi.

### 120 Esidinga ukukwenza 118

Ubeka uphawu kukhwizi emayelana nabakwenza ukusiza ekhaya.  
Uthola amagama afanele endabeni.  
Ukhethe isabizwana esifanele.  
Umsebenzi wokuzijabulisa.

### 121 Siyagubha 120

Ufunda indaba ngezinhlolo ezahlukahlukene zemigubho.  
Ubhala ethebhuleni izimpendulo ezimayelana nendaba.  
Ubhala imisho ngeholidi abaligubhayo.  
Uhlela amagama ngokwemisindo ntw, nsw.

Kopisha amagama ima, cha

### 122 Sisagubha 122

Ingxoxo nokuqagela ngezithombe.  
Uthola izenzo.  
Amalungiselelo onyaka ozayo uqondanisa imisho.

### 123 Kulo nyaka nakozayo 124

Ugcwalisa imisebenzi yenyanga ngayinye ekhalendeni.  
Ugcwalisa ikhalenda lezinsuku zokuzalwa.  
Uhlela amagama ngokwemisindo njw, ngw.  
Ufunda amagama alalele imisindo.  
Ubhala imisho esebenzisa amagama awanikeziwe.  
Ukopisha amagama le, ima, lo, izinja.

### 124 Ukubhala indaba 126

Uxoxa ngesakhiwo sendaba nomngani.  
Ugcwalisa uhlelo lwendaba.  
Ubhala indaba encwadini yezinto ezisikwayo zendaba.

Wena ubalulekile 129

Isichazamazwi sami 130





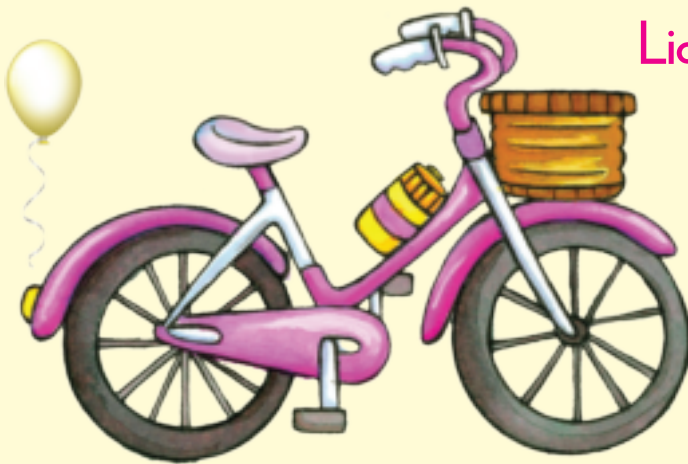
Masifunde

NgoMgqibelo odlule uBusi ubegubha usuku lokuzalwa. Ubegubha iminyaka eyisi-9. Ubejabulile, nakhu umalume wakhe umphe ama-R50 ukuze azithengele isipho esihle. OBusi noPhumi babe sebebona le phosta ekhuluma ngebhayisikili.

## IBHAYISIKILI ELITHENGISAYO

Mantombazana, niyekelani ukuya esikoleni ngamabhayisikili?

Ibhayisikili lamantombazana amahle liyathengisa.



Ligibele ulizwe ngaphambi kokulithenga.  
Shayela uBarbie enombolweni ethi 012 012 0120

### Licishe libe lisha.

Libukeka kanjani -ke?

- Ibhayisikili lamantombazana elingama-55cm.
- Linobhasikidi wokuphatha onodoli, ibhodlela lamanzi lepulastiki kanye namabhuleki asebenzayo.
- Linefulemu eliphinki nemishwe emhlophe, isihlalo esiphinki, sikwazi ukwehliswa sikhushulwe, linezimpondo eziziqokisiwe.
- Iketanga lemboziwe ukuze ungangcoliswa wuwoyela emilenzeni.



Masibhale



Yini ethengisayo?

Ngubani oyithengisayo?

Ithini inombolo yothengisayo?

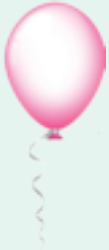
Yintsha le nto ethengisayo?

Usuku:



Masibhale

Bhala umlayezo wosuku lokuzalwa lukaBusi.



Blank lined area for writing a message.

Amagama okubhekisiswa  
libe  
lisha  
ubude  
kanye



Sisebenza ngamagama

Funda amagama ulalele imisindo. Manje bhala imisho yakho emibili encwadini yakho yokubhalela.

indwangu

ingwazi

uyasindwa

esangweni

ingwenya

iyasengwa

kuyabongwa

indweba



amalongwe

Blank lined area for writing a message.



kuyathengwa

Blank lined area for writing a message.



kuphindwe

Blank lined area for writing a message.



kulindwe

Blank lined area for writing a message.



Masibhale

Kopisha la magama.

Handwriting practice box with the cursive letter 'lo' on a lined background.

Handwriting practice box with the cursive letter 'le' on a lined background.



Masenze lokhu

Uke wabona noma walalela izikhangiso ezinhle kumabonakude noma emsakazweni? Yini enhle ngazo?

Eqenjini lakho ake nidlale umdlalo oyisikhangiso sikamabonakude esikhangisa ngebhayisikili, noma okunye nje eningakucabanga.



Yini enifuna ukuyithengisa?



Masibhale

Funda imisho bese ukhetha igama elifanele uqedele ngalo umusho.

Namhlanje uBusi noPhumi **basesitolo/bebesitolo** samabhayisikili.

Bona **babuka/bebebuka** amabhayisikili.

UBusi **uphiwe/uphiwa** imali engama-R50 ngosuku lokuzalwa.

Izolo **bebesekhonsathini/basekhonsathini** yesikole.

UJabu **ubengusomahlaya/ungusomahlaya** ekhonsathini.





Masibhale

Bhala izindaba eziqoqwe nguwe.

Namhlanje ekhaya

Namhlanje esikoleni

Izolo ekhaya

Izolo esikoleni



Masizijabulise

Buka umdwebo webhayisikili ukhulume nabangani bakho ngezingxenywe zalo ezahlukahlukene. Khuluma ngokuthi izingxenywe zalo zakhelwe ukwenzani. Gcwalisani -ke manje la malebuli ezingxenywe ezahlukene zebhayisikili.



izimpondo

isihlalo

okokushova

amabhuleki

ifulemu



Masifunde

OBusi noPhumi baye bayobona ibhayisikili. Umthengisi ubaxwayise wathi, "Ningalithengi ningaligibelanga nalizwa."

UBusi uye waligibela ibhayisikili walizwa. Likhombise ukuba nejubane.

UPhumi naye waligibela. Wathi, "Busi, lihle leli bhayisikili ngempela."

Inkinga ukuthi libiza amaR60 kanti uBusi uphethe amaR50 kuphela.

Ngesonto eledlule uBusi ubeqeda iminyaka eyi-10, umalume wakhe wamupha amaR50.

UBusi usuke waya ekhaya wafika wacela uyise ukuthi amuphe amaR10. Uyise uthe, "Ngizokunika imali engangamaR10, kodwa ngicela ungisize esivandeni kuqala." UPhumi wathi, "Ngizokusiza nami, Busi."

UPhumi wamsiza uBusi esivandeni. Basusa amahlamvu banisela izitshalo.

"Ngiyabonga ngokungisiza, Phumi," kusho uBusi.

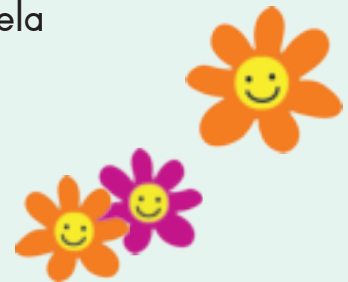
"Abangane bamelwe ukuba njalo," kusho uPhumi.



Abangani bayasizana.

Abangani bayalalana.

Abangani bayanakekelana.





Masibhale

Phendula le mibuzo. Bhala izimpendulo zakho ethebhuleni.

Libize malini ibhayisikili?

Ube namalini uBusi?

Ugcine edinga malini uBusi?

Kudingeke enzeni uBusi ukuze athole enye imali?

Kungabe uPhumi ube ngumngani omuhle? Usho ngani?

Umngani wakho omuhle ukwenzelani wena?



Sisebenza ngamagama

Funda amagama ulalele imisindo. Manje bhala imisho yakho emibili encwadini yakho yokubhalela.

ingane

zwakala

gaxwa

umsebenzi

ingoma

izwi

baxwaya

uNomsa

ubaxwayise

nalizwa

inkinga

wamsiza

Amagama okubhekisiswa

lihle  
uthe  
imali  
zakho



Masibhale

Kopisha la magama.

oma

osa



# Abangani beqiniso njalo-njalo



Masenze lokhu

Buka lezi zithombe. Xoxa nabangani bakho ngokuthi indaba ingahle iphele kanjani. Manje gwalisa ibhamuza lenkulumo lokugcina usho ukuthi laba bantwana benzani.



1

O Phumi, kumnandi ukugibelisana kanje.

Yebo, Busi, kumnandi lokhu. Ngiyajabula ukuthi nginebhayisikili.

O, katshana elincane!

Busi, sizokwenzani ngalo?



3



2

Phumi, lalela. Ngizwa ukukhala kwekati.

Yebo! Bona – yikati libambeke ngomsila ocingweni.

\_\_\_\_\_

\_\_\_\_\_



4

\_\_\_\_\_

\_\_\_\_\_



Masenze lokhu

Yenza ikhadi labangani ababili bakho obathandaa kakhulu. Bhala umlayezo uwubhekise kubona.

Blank writing area for the first card.



Blank writing area for the second card.



Masibhale





Benzeni oPhumi noBusi ngekati elincane? Bhala isiphetho sendaba.

Blank writing area for the story.



Masizijabulise

Lungisa la magama uwabhale ezikhaleni ezingezansi. Bese uqondanisa amagama nezithombe.

ilikisiyahbi	inonyi ahpehpey	idikisahbu	alohbi
ibhayisikili			
			
itaki	ajni	uldni	alhalhisi



Masifunde

NgomSombuluko oDeda noJabu bebeye ebholeni lezinyawo beyoziqeqesha. UDeda ushiye izicathulo zebhola ekhaya. UMqeqeshi wathi, “Awukwaz’ ukudlala ngaphandle kwezicathulo zebhola. Uzolimala.”

Nokho uDeda akazange alalele. Waqhubeka nokudlala. UDeda ufake amagoli amathathu.

“Hheyi, uyadlala wena! Kuhle lokho,” kumemeza uJabu.

Masinyane, uDeda wasikeka onyaweni. Kwaba buhlungu.

“Ngizofika kanjan’ ekhaya?” esho efuna ukukhala.

“Ungahlupheki, ngizokusiza,” kusho uJabu.

UJabu noDeda bagibela ibhayisikili.

UZethu wathwala isikhwama sikaDeda. Bathatha uDeda baya naye ekhaya.

“Mama, ngilimele,” kusho uDeda.

“Bewuganga naw’ ukuthi bewungadlala ngaphandle kwezicathulo zebhola,” kusho umama.



Masibhale



Ukweqeka konkamisa kwenzeka uma amagama amabili ezwakala sengathi ahlngana aba ngelilodwa uma sikhuluma. Uma siwabhala sisebenzisa uphawu (') ukukhombisa lapho kweqeke khona unkamisa. Nazi ezinye zezibonelo: **akekh' ekhaya**; **ubuy' emini**; **ulal' ehotela**.

Bhala phansi uhla lwawo wonke amagama anonkamisa abeqekile kule ndaba.

--	--	--



Phendula le mibuzo - ke manje.

Sazi kanjani ukuthi uDeda udlale kahle?

Ufike kanjani ekhaya uDeda?

Ngubani omunye omsizile uDeda?

Kungabe oJabu benoZethu bangabangani baDeda? Usho ngani?

onyaweni  
efuna  
naye  
kusho



Masibhale

Bhala ngaphakathi kwabacaphuni amazwi abawasho kuDeda.



uMqeqeshi	"	"
uJabu	"	"
uMama	"	"



Sisebenza ngamagama

Funda amagama ulalele imisindo. Manje bhala imisho yakho emibili encwadini yakho yokubhalela.

isinkwa

injwayelo

inkwantshu

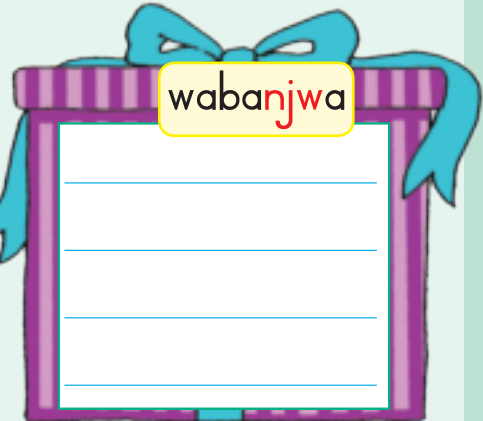
wabanjwa

kuhanjwa

inkwethu

inkwali

kwethenjwa



Masibhale

Kopisha la magama.

*ina*

*iwa*

# Uveda ulimala unyawo



Masenze lokhu

Nikeza lezi zithombe izinombolo ngokulandelana.  
Manje bhala umusho ngesithombe ngasinye.



Okokuqala

Emva kwalokho

Emva kwalokho futhi

Ekugcineni



Masibhale

Dweba umugqa ukuqondanisa amagama asho okufanayo.

wen'omkhulu	evela emafini
uz' usho	labo elisha
lal' ubuthongo	wena omkhulu
evel' emafini	lala ubuthongo

kusuk' uthuli	evuka ekuseni
lab' elisha	kusuka uthuli
amathamb' ekhanda	amathambo ekhanda
evuk' ekuseni	uze usho



Masibhale

Bhala phansi ukweqeka konkamisa emagameni anombala obomvu.

Ngijile ukuyodlala ibhola lezinyawo.

Ngijil' ukuyodlala

Bazohambisa uDeda ekhaya.

Siya esikoleni manje.

Uzofika emva kwesikhathi esikoleni namuhla.

Akazange aziphathe izicathulo zebhola uDeda.



Masibhale

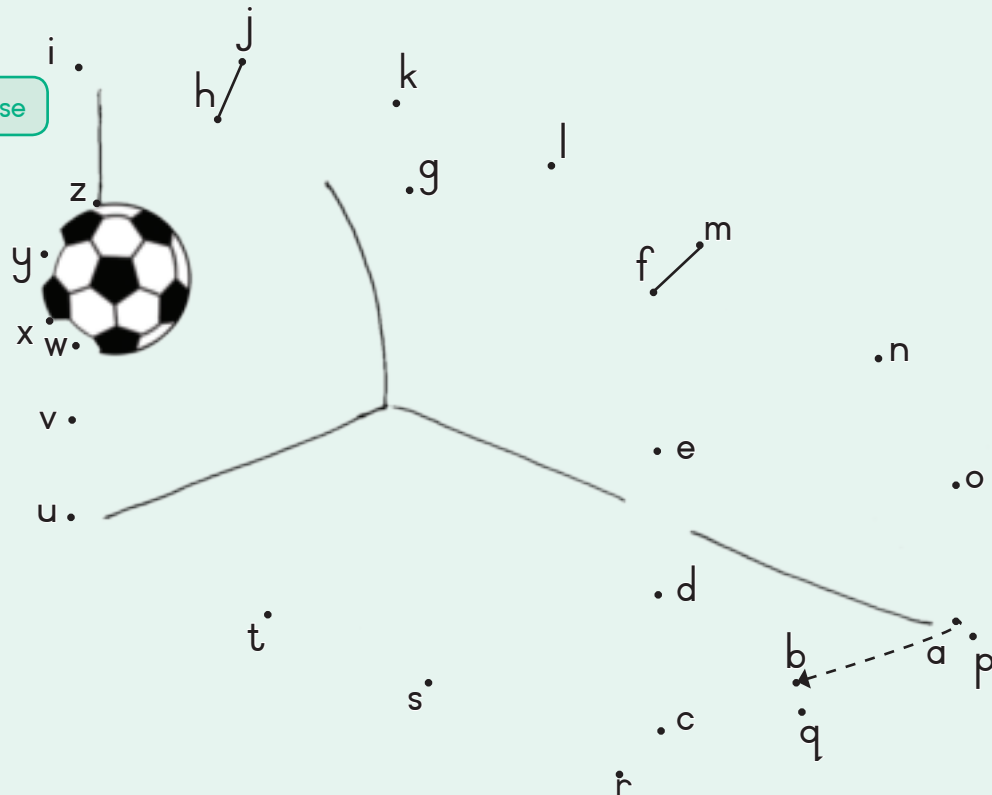
Dweba umugqa usuke emagameni asemgqeni ongenhla uye emagameni asho okufanayo emgqeni ongezansi.

awuzwa	mude	umgwaqo	ujabulile	bheka
udumele	isitaladi	uphakeme	bona	awulaleli



Masizijabulise

Hlanganisa amachashazi ukubona ukuthi yini le.





Masifunde

Sonke kubalulekile ukuthi sisize abanye abantu zonke izinsuku.

Uyabasiza abanye abantu?

Wenzani ukusiza abanye abantu?

Ngobani abakusizayo wena?

Bakwenzelani?



UPhumi noPhetro

Siyasiza ekhaya. Sisiza ukugeza izitsha.



UDeda noBusi

Sisiza esivandeni. Sihlakula ukhula sinisele izitshalo.



UJabu

Ngisiza ugogo. Ngimsiza ukuthi awele umgwaqo.



OPhumi noBusi

Sisiza ukuphatha abantwana bakithi.

Usuku:

Amagama  
okubhekisiswa

ukhula

ugogo

awele

ukugeza



Masibhale

Funda indaba bese uphendula imibuzo.

Ngubani osiza ugogo wakhe?

Benzani oPhumi noBusi ukusiza?

Ngubani ogeza izitsha?

Ngubani ohlakulayo?



Masibhale

Bhala imisho emi-2 usho ukuthi ubasiza kanjani abanye abantu.



Sisebenza ngamagama

Funda amagama ulalele imisindo.

Manje bhala imisho yakho emibili encwadini yakho yokubhalela.

esenzweni

inqwaba

enkonzweni

kukhonzwa

izinzwa

umnqwazo

izinzwane

ezenzweni

inzwabethi

kusetshenzwa

kuhlanzwa

kuhonqwe



Masibhale

Kopisha la magama.

aba

emi

# Esidinga ukukwenza



Masenze lokhu

Beka uphawu (✓) ezintweni ozenzayo ukusiza.



Ukugeza izitsha

Ukupheka

Ukususa uthuli

Ukuqaphela izilwane

Ukuhlanza indlu

Ukulanda amanzi

Ukushanela

Ukubasa umlilo

Ukuphatha abantwana

Ukusiza esivandeni

Ukusiza abantu abadala

Ukusiza uma kuyiwa esitolo



Masibhale

Bhala ukhombise ukweqeka konkamisa emagameni adwetshelwe.

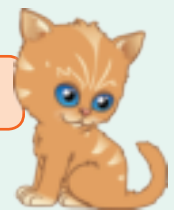
alikulang' ukudla

sizodlal' umdlalo

abasebenz' esivandeni

alikufun' ukudla

lifun' ukudla



OPhumi noBusi **abasebenzi esivandeni.**  
Basiza ukuqaphela ikati elincane.

abasebenz' esivandeni



Ikati elincane alikulanga ukudla kwalo.

Lona alikufuni ukudla manje.

Sizodlala umdlalo nalo.

Mhlawumbe lizobuye lifune ukudla futhi.



Masibhale

Gcwalisa manje ngesabizwana **yena, sona** noma **lona** ukuqedela umusho ngamunye.

yena sona lona

Ikati lami lisesihlahleni. \_\_\_\_\_ alikwazi ukwehla futhi.

Isihlahla siphakeme. \_\_\_\_\_ siphakeme kunendlu.

UJabu uzolehlisa. \_\_\_\_\_ uzogibela alilande.

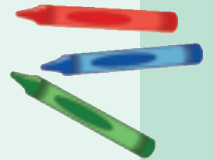
UPhumi uzombambela ilada. \_\_\_\_\_ uzoqiniseka ukuthi uJabu akawi.



Masizijabulise

QALA

Phonsa uhlamvu lwemali. Uma kuyikhanda phezulu, hamba uye phambili izindawo ezi-2. Uma kungelona ikhanda, qhubeka indawo eyodwa. Uma ufika endaweni wenze okushiwo kuleyo ndawo.



Yisho igama lakho.

Bamba ipeni ngomunwe owodwa.

W  
Yisho igama eliqala ngohlamvu w.

Cula iculo.

Thwala incwadi yakho ekhanda.

7 5 10 1 4 6  
2 8 3 9  
Bala uhlehle usuke ku-10.

Pela igama lakho.

Vala amehlo umamatheke.

'ch'  
Yisho igama elinomsindo ch.

Xegisa isicathulo sakho.

Sukuma uphakamise izandla.

Bonga uthisha ngokukufundisa kahle.

QEDA



Masifunde

Ngingu-Pam.  
Ngineminyaka  
eyisi-8.



Ngingu-Jabu.  
Ngineminyaka  
eyisi-7.



Kuzofika uKhisimuzi masinya. Sizothola izipho. Sizopha abangani bethu izipho nathi. Sizoba nehlahla likaKhisimuzi. Izipho sizozibeka ngaphansi kwehlahla. NgoKhisimuzi siyaye sidle amakhekhe namaswidi.

Ngingu-Sharon.  
Ngineminyaka  
eyi-10.



Ngingu-Selwyn.  
Ngineminyaka  
eyisi-9.

Masinyane kuzoba ne-Hanukkah. Sizoba nokudla okumnandi okuningi. Siyathanda ukudla amakhekhana amancane. Siyathanda futhi ukuphiwa izipho.

Ngingu-Madhu.  
Ngineminyaka  
eyisi-8.

Ngingu-Batuk.  
Ngineminyaka  
eyi-10.



Kuzofika uDiwali masinyane. Sizophiwa amabhokisi amaswidi nezipho. Sizokwenza indlu yethu ibukeke kahle ibe neziqhumane futhi.

Ngingu-Fatima.  
Ngineminyaka  
eyisi-8.



Ngingu-Enver.  
Ngineminyaka  
eyi-11.

Masinyane kuzoba no-Eid. Nginethemba lokuthi sizothola izipho ezinhle. Siyaye siphe abangani izipho nathi. Siba namakhekhe amaningi namaswidi, sidle.

Usuku:



Masibhale

Gcwalisa igama lomntwana ngamunye bese uqedela ithebhula.

Igama	Iminyaka yobudala	Iholidi	Bazodlani?	Kungabe bazoba nazo izipho?
uPhumi	8	IikaKhisimizi	Amaswidi nekhekhe	Yebo



Yiliphi iholidi ozoba nombungazo walo? Uzowenza kanjani umbungazo?

---



---



Sisebenza ngamagama

Funda amagama ulalele imisindo. Manje bhala imisho yakho emibili encwadini yakho yokubhalela.

donswa

esontweni

umntwana

entweni

inswebu

kuntwela

emdansweni

inswani

ezintweni

ezinsweni

ntweza

nswi


Amagama okubhekisiswa

yethu  
izipho  
siphe  
sidle



Masibhale

Kopisha la magama.

ima

cha



Masenze lokhu

Khuluma nomngani wakho mayelana nokwenzeka esithombeni.

## Okokuqala




## Emva kwalokho




Masibhale

## Izenzo

Kokelezela igama bese udwebela isenzo esisitshela ngokuthi umuntu wenzani.

UZethu udlala ikhilikithi.

UShado ufinda incwadi.

UJabu ugijima emqhudelwaneni.

UMimi uyabhukuda uma kuphuma isikole.

UPhumi udlala ibhola lomnqakiswa.

UFathima uphuthuma ibhasi.

UBusi ugibele ibhayisikili lakhe.

# Amalungiselelo ami onyaka ozayo



Masibhale

Phendula le mibuzo.



Kuzoba yimuphi unyaka ozayo?	
Wenza maphi amalungiselelo onyaka ozayo?	



Masibhale

Qondanisa umusho osebhokisini eliphuzi nomusho ofanele ebhokisini elisasibhakabhaka.



Ibhubesi laqala lafuna ukudla.

Ikati ligijime lagibela emthini.

Umfana ukhahlele ibhola kakhulu.

Abantwana badlale ngomentshiso.

Sibhake ikhekhe ngoMgqibelo.

Belina.

Ngalanda isambulela sami.

Bekuwusuku lukaLizi lokuzalwa.

Zabaleka izilwanyana ezincane.

Ifasitela lesikole labulawa yibhola.

UBusi uzishise iminwe.

UJabu wayeselanda ilada.



# Kulo nyaka nakozyayo



Masifunde

Gcwalisa ngezinto ozenze ngezinyanga ezahlukene zonyaka odlule.



uMasingana	uNhlolanja	uNdasa	uMbasa
uNhlaba	uNhlanguzana	uNtulikazi	uNcwaba
uMandulo	uMfumfu	uLwezi	uZibandlela

Sibe nonyaka omatasatasa. Sidlale imidlalo. Senza umsebenzi wesikole. Sanakekela abanye abantu. Sathola abangani. Saqaphela izilwane **zethu**. **Safunda** ngesimo sezulu **kanye** nezikhathi zonyaka. **Safunda** ngabanye bethu.



Masibhale

Gcwalisa amagama ezinyanga eziyisi-6. Manje bhala ukuthi wenzeni ngenyanga ngayinye.

1	
2	

3	
4	
5	
6	



Masibhale Phendula le mibuzo.

Iyiphi le nyanga esikuyo?

Bhala usho ukuthi wenzani ngale nyanga.



Sisebenza ngamagama

Funda amagama ulalele imisindo. Manje bhala imisho yakho emibili encwadini yakho yokubhalela.

Amagama okubhekisiswa

nonyaka  
abanye  
abantu  
zonyaka

kuyahanjwa

kuyasengwa

kuyabunjwa

kuyasongwa

kuyahlanjwa

kuyathengwa

kuyabanjwa

kuyabongwa	kuyaphenjwa	kuyathungwa

kuyakhongwa

kuyavinjwa



Masibhale Kopisha la magama.

le

ima

lo

izinja



Masikhulume

Amalungiselelo  
endaba yamiAbalingiswa kanye  
nesizinda.

Isingeniso

Phakathi nendaba



Isiphetho



Ngubani osendabeni yakho?

Yenzeka kuphi indaba yakho?

Yenzeka nini indaba yakho?

Kwenzekani esingenisweni sendaba yakho?

Kwenzekani phakathi nendaba yakho?

Iphela kanjani indaba yakho?



# INGEMUVA LEKHAVA



## MAYELANA NOMBHALI

Bhala igama lakho

Bhala iminyaka yakho

Bhala lapho uhlala khona

8

ISINYATHELO 4: Sika emgqeni angewona amachashazi emva kokuhlenganisa ibhuku lakho ngesitepula.



# IKHAVA

Dweba isithombe lapha.

Bhala isihloko sebhuku lapha.

Bhala igama lakho (nguwe umbhali).

1

ISINYATHELO 1: Gqqa emachashazini awumugqa



9

Bhala umzimba wendaba yakho lapha kanye nasekhasini lesine.

Dweba isithombe lapha.

7

Bhala umzimba wendaba lapha.

Dweba isithombe lapha.





Dweba isithombe.

Dweba isithombe.

Qala indaba yakho lapha.

Qedela indaba yakho lapha.

2

7

3

9

Chubeka nendaba yakho lapha.

Bhala ukuthi kwenzekani ekupheleni kwendaba yakho.

Dweba isithombe.

Dweba isithombe.



**Wena ubalulekile.  
Umzimba wakho  
wonke ubalulekile.**



**Umzimba wakho ungowakho!**



**AKEKHO  
UMUNTU  
okufanele athinte  
izitho zakho  
zangasese.**

**Kufanele kubekhona umuntu omtshelayo  
uma kukhona umuntu othinta izitho zakho  
zangasese.**

**Kufanele kubekhona umuntu  
omtshelayo uma kukhona umuntu  
okwenzisa izinto ongazifuni.**

**Lapho ungashayela khona  
ucingo uma udinga usizo:**

**Child Line: 0800 05 55 55**

**SAPS Crime Stop: 086 00 10111**

**SAPS Emergency Number: 10111**

**Life Line: 0861 322 322**

**Child Protection Unit: 012 393 2359/2362/2363**



# Isichazamazwi sami

A a

B b

C c

D d

E e

F f

G g

H h

I i

J j

K k

L l

M m

N n

O o

P p

Q q

R r

S s

T t

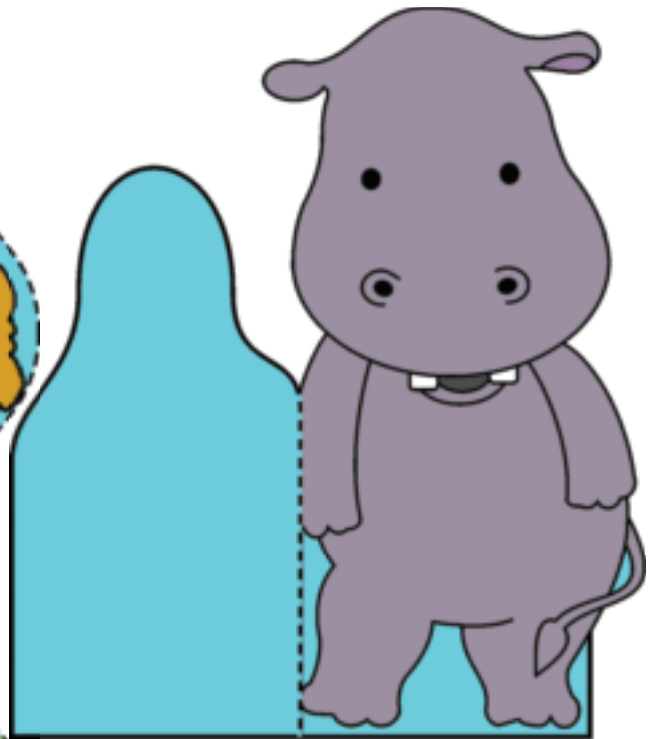
U u

V v

W w

X x

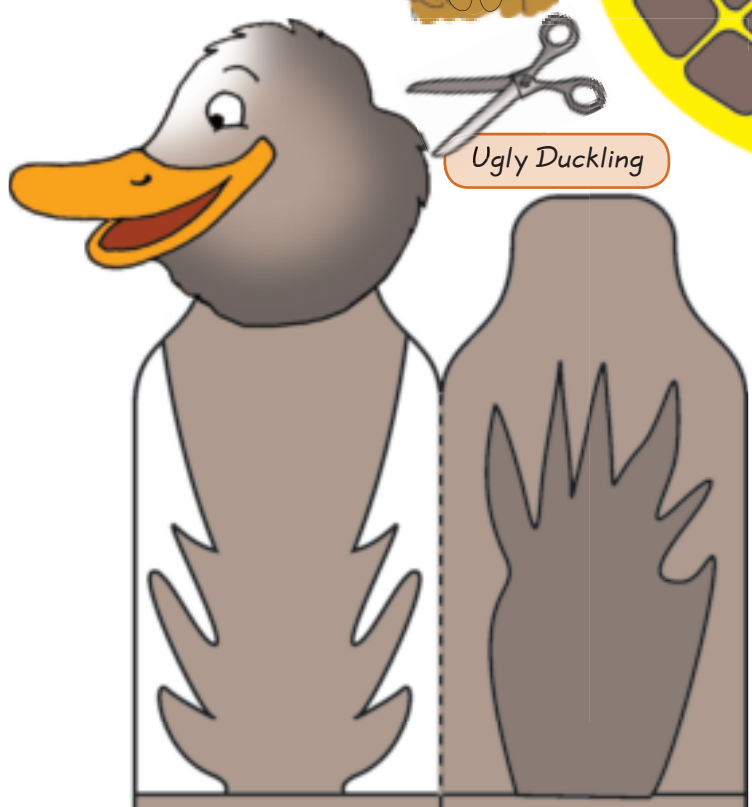
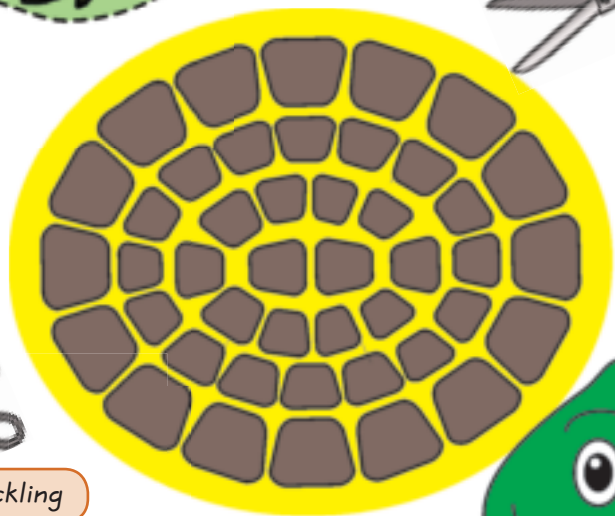
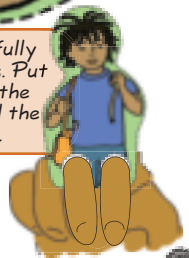
Y y



**Finger puppets:**  
Cut out the finger puppets on the solid black lines and fold on the dotted lines. Now glue on the back where shown to form a finger puppet. Now tell the story about the hippo and the tortoise.

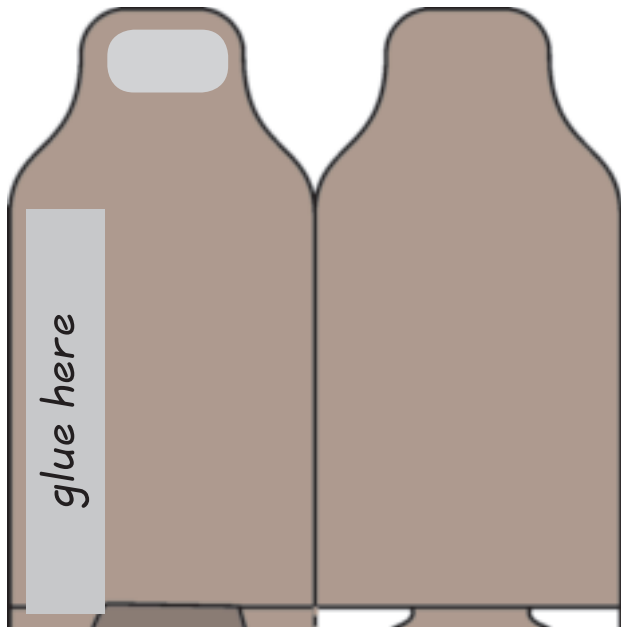
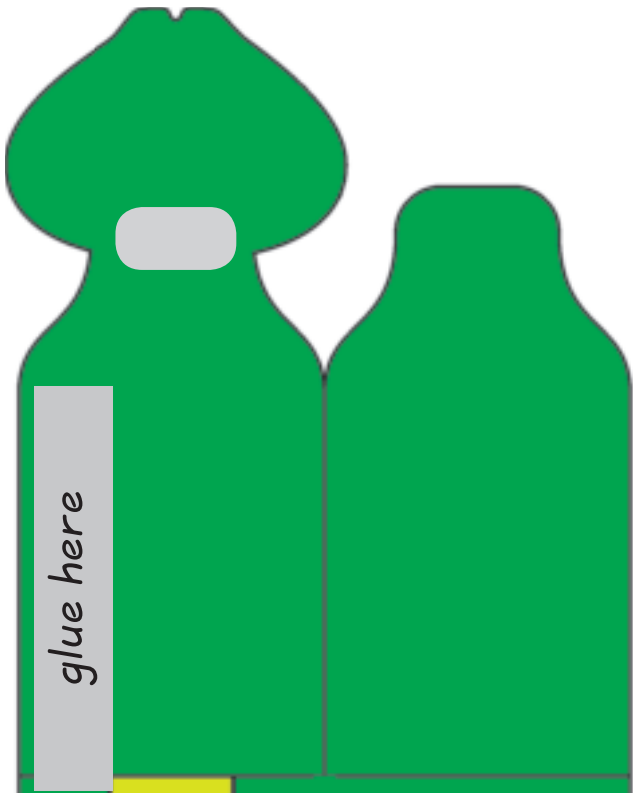
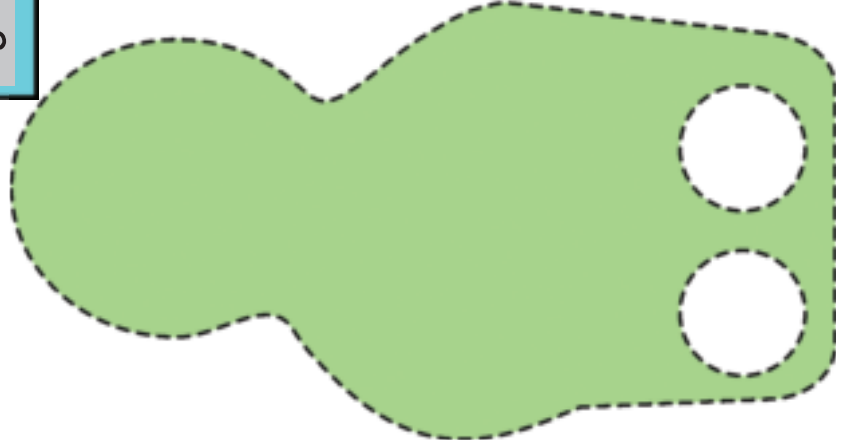
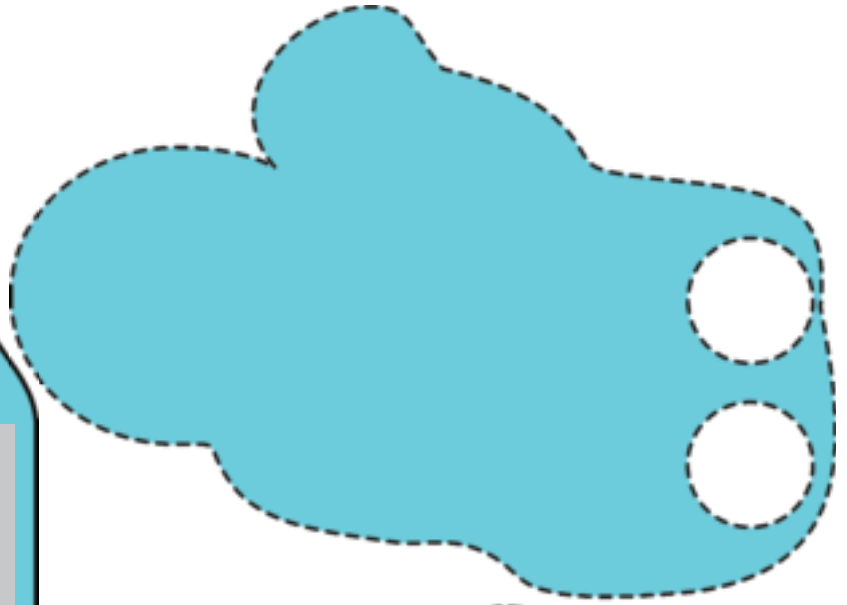
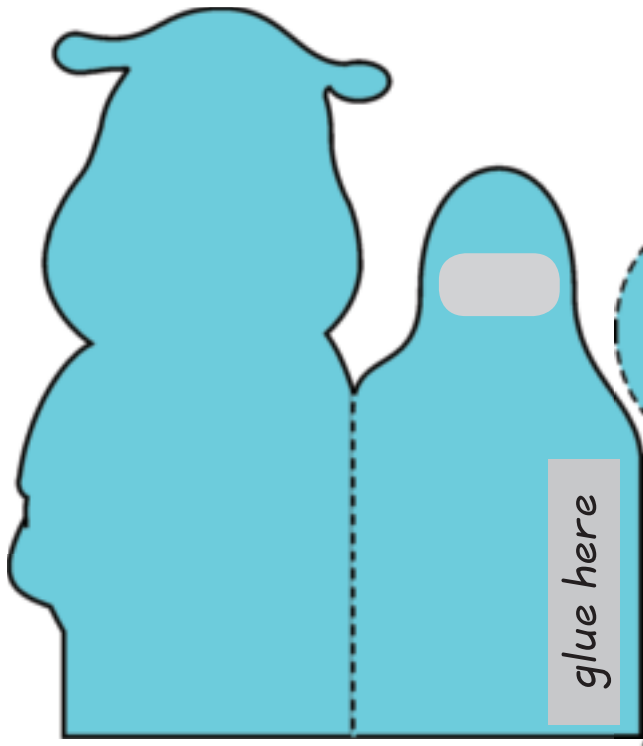


Cut out the puppets and then carefully cut out the two circles on their legs. Put your 2nd and 3rd fingers through the holes to form legs. You can now tell the story about Jack and the giant.



Ugly Duckling





*MASKS: You can use these masks for the role play in worksheet 100.  
Cut out the mask on the outer black line.  
Tie some string through the holes on each side and you can be either a clown or a hippo, depending on which side you use.*



*Use this book mark to keep your place in your book.  
Write your name on it so that you don't lose it.*

