

Ihlaziywe yaze
yalungelelaniswa
neCAPS

Ibanga lesi-

2



Izakhono zoBomi
ngesiXHOSA

Incwadi yesi-2
Ikota 3 & 4



Igama:

Iklasi:



ISBN 978-1-4315-0265-3



LIFE SKILLS IN ISIXHOSA
GRADE 2 – BOOK 2
TERMS 3 & 4

ISBN 978-1-4315-0265-3

THIS BOOK MAY NOT BE SOLD.

14th Edition

Workbooks available in this series:

- Grade R (in all official Languages);
- Literacy/Home Language Grades 1 to 6 (in all 11 official Languages);
- Mathematics Grades 1 to 3 (in all 11 official Languages);
- Mathematics Grades 4 to 9 (in Afrikaans and English);
- Life Skills Grades 1 to 3 (in all 11 official Languages); and
- Grades 1 to 6 English First Additional Language.

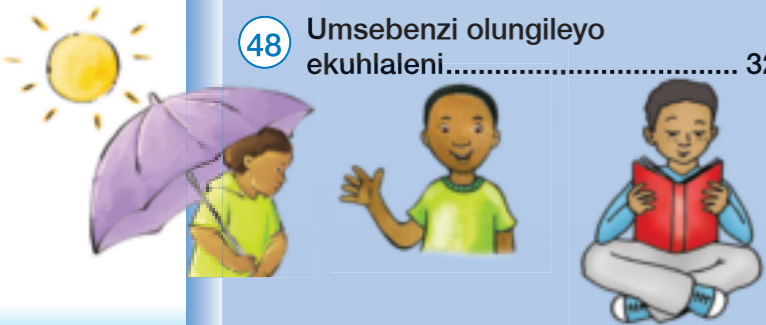


basic education
Department:
Basic Education
REPUBLIC OF SOUTH AFRICA



Iziqulatho

Ikota yesi-3	Iphepha
33 Umhlaba ubaluleke ngantoni kuthi?	2
34 Ukubaluleka komhlaba.....	4
35 Okunye ngomhlaba	6
36 Ukusebenza ngomhlaba	8
37 Uthutho emhlabeni: endleleni	10
38 Uthutho emhlabeni: oololiwe.....	12
39 Uthutho ngomoya.....	14
40 Uthutho ngamanzi	16
41 Okunye ngothutho lwasemanzini	18
42 Uthutho lukawonke-wonke	20
43 Ukhuseleko endleleni.....	22
44 Imithetho yendlela.....	24
45 Oolindela besikolo.....	26
46 Asinceda njani amagosa endlela?	28
47 Abanye abantu abasincedayo	30
48 Umsebenzi olungileyo ekuhlaleni.....	32



Ikota yesi-4	Iphepha
49 Ilizwe lethu, uMzantsi Afrika	34
50 IFlegi yeSizwe.....	36
51 Umhobe wesizwe nembasa yesizwe	38
52 Imiqondiso yesizwe.....	40
53 Iindlela ezahlukeneyo zonxibelelwano.....	42
54 Ukunxibelelana ngokubhala nangamazwi ethu	44
55 Ezinye iindlela zokunxibelelana.....	46
56 Unxibelelwano ngezibhengezo nangomculo.....	48
57 Sinxibelelana njani xa singeva ngeendlebe?	50
58 Sinxibelelana njani xa singaboni?	52
59 Imini nobusuku	54
60 Amaphupha neminqweno ebusuku	56
61 Umsebenzi wasemini nowasebusuku	58
62 Ukwenza umsebenzi olungileyo ebusuku	60
63 Izilwanyana zasebusuku	62
64 Isilwanyana esihlala sikhuselekile ebusuku.....	64



UNksz Angie Motshekga
uMphathiswa
weMfundo esisiSeko



UGqir Reginah Mhaule
uSekela Mphathiswa
weMfundo esisiSeko

Ezi ncwadi zilungiselelwe abantwana boMzantsi Afrika phantsi kwephiko loMphathiswa weMfundo esisiSeko uNksz Angie Motshekga kunye noSekela Mphathiswa weMfundo uGqir Reginah Mhaule.

Ezi ncwadi zokusebenzela, iRainbow Workbooks, lelinye lamalinge ongenelelo eSebe leMfundo esisiSeko ajolise ekuphuculeni umgangatho wabafundi beloMzantsi Afrika abakumabanga amathandathu okuqala. Njengomnye wemiba ephambili yoMkhomba-ndlela kaRhulumente, eli phulo libe nempumelelo ngenxa yenkxaso-mali evela kuVimba weSizwe. Oku kuye kwenza ukuba iSebe likwazi ukuvelisa ezi ncwadi, zifumaneke ngazo zonke iilwimi ezisemthethweni ngexabiso eliphantsi.

Sinethemba lokuba ootitshala baya kuzifumana ezi ncwadi zokusebenzela ziluncedo kakhulu kwimfundo yemihla ngemihla, nasekuqinisekiseni ukuba abafundi bayifikelela yonke ikharityhulam. Ukuqinisekisa ukuba utitshala uyakhokelwa kuyo yonke imisetyenzana, sisebenzise izalathisi ezibonisa oko kufanele ukwenziwa ngumfundi.

Sinethemba lokwenene lokuba abantwana baya kukonwabela ukusebenza kwezi ncwadi ekukhuleni nasekufundeni kwabo, kwanokuba nawe titshala uya kwabelana nabo kolu yolo.

Sinqwenela ukuba nibe nempumelelo ekusebenziseni ezi ncwadi.



Ibanga lesi-

2



Izakhono zoBomi
NGESIXHOSA
Incwadi yesi-2



Le ncwadi yeka-:





Umhlaba ubaluleke ngantoni kuthi?

Abantu bafuna umhlaba ukuze baphile. Indawo esiphila kuyo yenziwe ngomhlaba. Sakha izindlu zethu emhlabeni, siphinde silime izityalo esizityayo emhlabeni. Izilwanyana nazo zikwafuna umhlaba. Iibhokhwe neenkomo zitya ingca kunye nezityalo ezithile ezikhula emhlabeni. Ezinye izilwanyana ezincinane, ezifana nemivundla kunye neempuku, kananjalo nezinambuzane ezifana neembovane nemibungu, ziphila emhlabeni. Kanti phantse zonke zifuna umhlaba ezinokukhula kuwo.

Kukho iintlobo ezintathu ezahlukileyo zomhlaba.

Umhlaba oyisanti

Ukuba uhlikihla lo mhlaba ngeminwe yakho, uya kufumanisa ukuba ulukhuni, womile kwaye ubuntlabathi. Kulula ukuba uphaphathekiswa ngumoya. Xa ugalela amanzi kumhlaba oyisanti, ayabaleka akhawuleze ukutshona kwaye ayayikhukulisa isanti leyo. Izityalo azikhuli kakuhle kulo mhlaba unebala elikhanyayo.

Udongwe

Omnye umhlaba uvakala njengodongwe. Xa ulumanzisa olu hlobo lomhlaba luba nchangathi. Zininzi izinto onokuzenza ngodongwe olumanzi, njengeekomityi, iingqayi, izitya nezilwanyana zodongwe. Xa isina imvula, udongwe luwagcina ixesha elide amanzi kanti nezityalo ezikhula kulo ziba manzi kakhulu.



Umhlaba oyisanti



Umhlaba oludongwe



Umhlaba ovunduvundu

Umhlaba ovunduvundu ngowona mhlaba ulungele imbewu nezityalo. Lo mhlaba awubi manzi okanye wome kakhulu. Unokutya okwaneleyo okwenza izityalo zihlale zikhula. Umhlaba ovunduvundu ufana nomxube wesanti nodongwe kodwa udla ngokuba nombala omnyama.

Umhla:



Uvunduvundu



Masenze

Fumanisa ukuba isikolo sakho sinomhlaba onjani.

- Hamba-hamba ujikeleze isikolo nomhlobo wakho nikhangele ukuba ningawufumana na umhlaba oyisanti, udongwe novunduvundu.
- Yiza nomhlaba weendawo ezintathu ezahluka-hlukileyo eklasini, uwufake ezinkonkxeni ,ezingxoweni okanye ezikomityini.
- Bhala iinombolo kwizikhongozeli 1, 2, no-3.



Masithethe

Thetha nomhlobo wakho ngomhlaba oze nawo kumabala esikolo. Phendula le mibuzo ngohlobo ngalunye lomhlaba.

- Ukhangeleka njani umhlaba?
- Uvakala njani umhlaba esandleni?
- Bezikhona izityalo ezikhula kulo mhlaba?



Masibhale

Bhala kwikholam yokuqala indawo owufumene kuyo umhlaba uze ufake umbala kwiimpendulo ezichanekileyo.

Uwufumene phi umhlaba?	Uvakala njani?			Bezikhona izityalo kuwo?	
	womile	umanzi kwaye uncangathi	uyaphuqeka	ewe	hayi
	womile	umanzi kwaye uncangathi	uyaphuqeka	ewe	hayi
	womile	umanzi kwaye uncangathi	uyaphuqeka	ewe	hayi
	womile	umanzi kwaye uncangathi	uyaphuqeka	ewe	hayi





Ikota 3 – Iveki 1

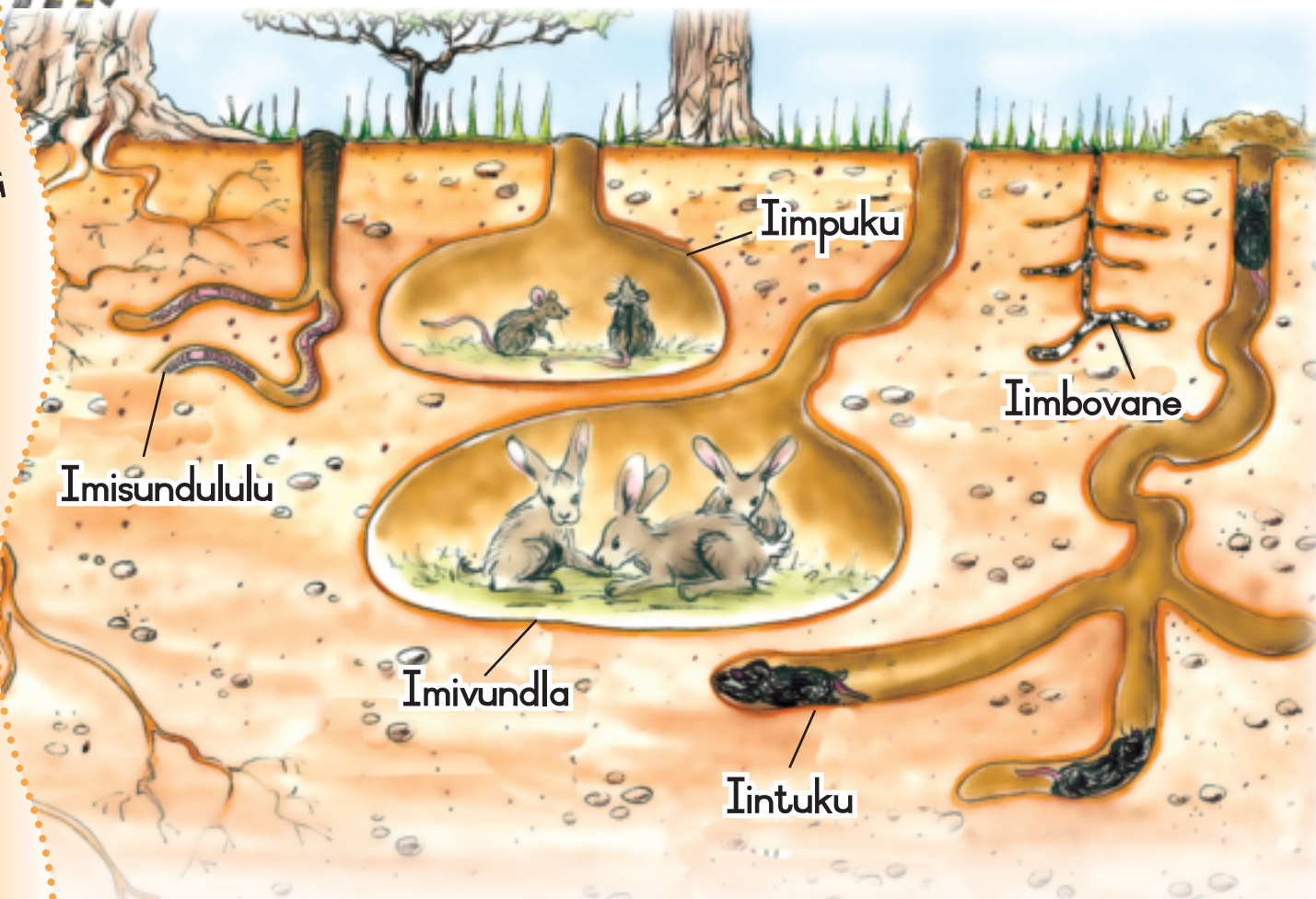
34

Ukubaluleka komhlaba



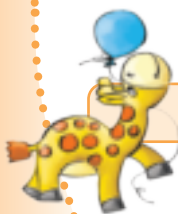
Masithethe

Jonga umfanekiso uze uthethe ngazo zonke izilwanyana eziphila emhlabeni.



Masithethe

Xelela umhlobo wakho ngezilwanyana ozibona emfanekisweni. Ingaba zikhona na ezinye izilwanyana onokuzicinga eziphila emhlabeni? Bhala amagama azo.



Masenze

- Zoba okanye upeyinte umfanekiso weentaka, intlanzi okanye izinambuzane. Xoxa ngemibala nemilo yazo.
- Qokelela izinto zendalo njengamasetyana, amagqabi, iwulu okanye isanti. Yenza ingqokelela yemifanekiso. Thetha ngemibala, iimilo kunye nemvakalo yazo.





Masibhale

Krwela umgca ukuze utshatise ezi zinto zikwibhokisi engasekhohlo nendlela ezivakala ngayo xa uzibamba kwibhokisi engasekunene.

Umhla:

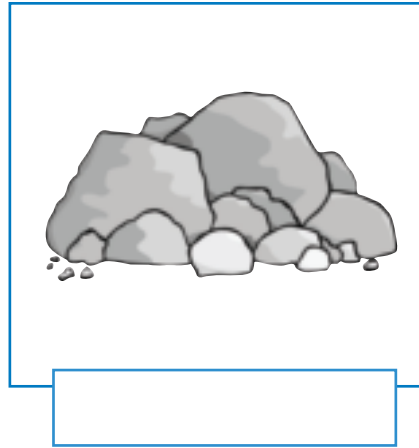
ubusi
umqamelo
iliva
umgangatho
iglasi
isepha

ulukhuni
incangathi
igudile
uthambile
imtyibilizi
libukhali



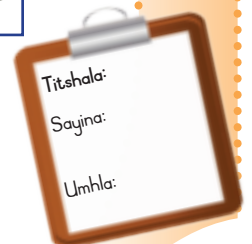
Masibhale

Zivakala njani ezi zinto? Bhala iimpendulo zakho.



Masishukume

Yenzani isangqa. Balekani niye kwicala langasekunene niphinde niye kwelinye icala ngasekhohlo. Ngoku phosela abafundi ibhola ubalandelelanise ngabanye. Qala ubhekise kwicala langasekunene uphinde uye kwelinye icala.





Okunye ngomhlaba



Masifunde

Kufuneka siwuphathe kakuhle umhlaba.

Eyona ndawo yomhlaba ibaluleke kakhulu ebantwini nasezilwanyaneni ngumhlaba ongaphezulu. Lo ngumhlaba ezikhula kuwo izityalo. Iingcambu zezityalo zinqanda umoya nemvula ekukhukuliseni umhlaba ongaphezulu. Ziyafa izityalo xa imvula incinane kakhulu, okanye xa kukho umlilo. Kanti naxa imvula ininzi kakhulu ziyafa. Xa kungekho zityalo, umhlaba ongaphezulu ukhukuliswa yimvula, okanye uphaphatheke ngenxa yomoya. Xa kunjalo, kuthethwa ngokhukuliseko. Abantu nabo bayalwenzela ukhukuliseko lomhlaba. Ukuba asiwuphathi kakuhle umhlaba, awunakukwazi ukondla izityalo ezikhula kuwo, kwaye ziya kufa. Ngenxa yoko, umhlaba uyakhukuliswa ngamanzi okanye uphaphatheke ngumoya.



Masithethe

Thetha nomhlobo wakho ngeendlela abantu abanokwenza ngazo ukhukuliseko lomhlaba. Zama ukuphendula le mibuzo:

Kwenzeka ntoni xa sigeca imithi emininzi?

Kwenzeka ntoni xa sifuye iibhokhwe, iigusha okanye iinkomo ezininzi kakhulu?



Masibhale

Jonga le mifanekiso. Thetha nomhlobo wakho ngento eyenzeka emhlabeni. Emva koko faka olu phawu (✓) kwimpendulo echanekileyo yombuzo ngamnye.

Ingaba ukhukuliseko lomhlaba lubangelwa

ngumoya	
yimililo	
yimvula encinane kakhulu	

Ingaba ukhukuliseko lomhlaba lubangelwa

lilanga	
ngabantu	
ngumoya	





Masifunde

Izityalo zifuna umhlaba olungileyo ukuze zikhule

Umhla:

Imithi nezityalo zifumana ukutya kwazo emhlabeni. Xa iintlobo ezahlukileyo zemithi nezityalo zikhula kunye, zithatha iintlobo ezahlukileyo zokutya emhlabeni kwaye umhlaba uhlala unempilo. Abalimi bayakwazi ukugcina umhlaba wabo usempilweni ngokulima izityalo ezisebenzisa iintlobo ezahluka-hlukileyo zokutya okusemhlabeni. Sinako ukugcina umhlaba ezityeni zethu usempilweni ngokugalela isivundisi kuwo.

Nawe ungazenzela isivundisi sakho. Isivundiso sondla izityalo. Nantsi iresiphi yesivundisi:



Masenze

Iresiphi yesivundisi

Uya kufuna oku:

- amaxolo eziqhamo nawemifuno
- iphepha elikrazuliweyo
- amagqabi afileyo nengca
- amaqokobhe amaqanda
- izingxobo zeti
- ikhadibhodi

Yintoni ekufuneka uyenze:

- Beka ezi zinto zibe yimfumba ekoneni yeyadi esethunzini.
- Faka nentwana yomhlaba.
- Galela amanzi awaneleyo ukuze uyigcine ifumile imfumba (ingabi manzi kakhulu).
- Yivumbulule uyiguqule ngefolokhwe yesitya qho ngeveki nganye okanye kwezimbini.
- Xa iba krumkrum kwaye iba mdaka ngakumbi ngebala, yombe emhlabeni esityeni sakho.
- Bukela ke ngoku izityalo zakho xa zikhula zomelele kwaye zisempilweni entle!



Musa ukusebenzisa:

iinkonkxa zetoti, iglasi, iplastiki, intlanzi, inyama, ubisi okanye itshizi.



Masibhale

Jonga imifanekiso uze ufake uphawu lokukorekisha kwizinto onokuzisebenzisa ukwenza imfumba yesivundisi. Yenza uphawu lukangxabalaza (x) kwizinto ongafanelanga kuzisebenzisa.

Titshala: _____
 Sayina: _____
 Umhla: _____

Ukusebenza ngomhlaba

Masifunde

UDumisani nodadewabo uNtombi bafuna ukwenza isitiya. UNtombi ufuna ukulima imifuno kodwa uDumisani ufuna ukulima iintyatyambo. Okokuqala, kufuneka babone indawo elungileyo yokwenza isitiya. Ungakwazi ukubanceda? Jonga le mifanekiso uze ufake uphawu lokukorekisha (✓) kwibhokisi echanekileyo.







Yintoni elandelayo ekufuneka beyenzile? Landelelanisa kakuhle iinombolo kwimifanekiso emithathu engasezantsi.







Ngaba benza into elungileyo? Faka uphawu (✓) lokukorekisha kokuchanekileyo uze ufake uphawu lukangxabalaza (✗) kwizinto ezingalunganga.











Masithethe

Thetha nomhlobo wakho ngokuba nesitiya semifuno kunye nemithi yeziqhamo ekhaya. Ingaba iyalondolozeka imali? Ingaba imifuno neziqhamo zinesongo esiphucukileyo? Kutheni? Ungalima eziphi iintlobo zeziqhamo nemifuno ekhaya? Zeziphi ezikhula kakuhle kwindawo ohlala kuyo? Jonga izitiya okanye iifama zalapho.



Umhla:



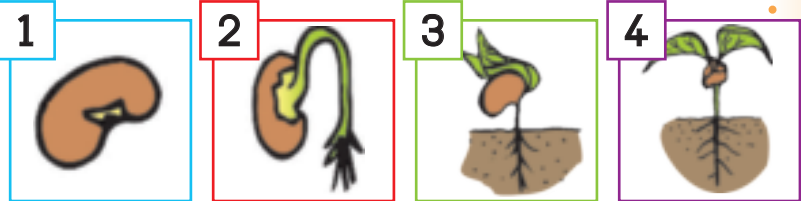
Masibhale

Yenza uludwe lweentlobo ezahlukileyo zemifuno onqwenela ukuyilima. Ecaleni kohlobo ngalunye xela ukuba kutheni ufuna ukuyilima nje.



Masenze

Jonga le mifanekiso uze uxelele umhlobo wakho ukuba kwenzeka ntoni na kwisityalo seembotyi kumfanekiso ngamnye.



Masishukume

- Mamela utitshala wakho ukuze xa esithi baleka, xhuma, yiwa okanye ngcileza wenze njalo kwangoko.
- Yima ngomlenze omnye. Ngoku tshintsha ume ngomnye. Krwela umgca emhlabeni okanye beka umtya omfutshane phantsi.
- Hamba emgceeni.
- Yolula iingalo zakho emacaleni ukuze ukwazi ukuxhathisa.
- Khawuzame ukwenza le nto ucimele.





37

Ikota 3 – Iveki 3

Uthutho emhlabeni: endleleni



Masifunde

Sisebenzisa iintlobo ezahluka-hlukileyo zothutho ukusuka kwindawo ethile ukuya kwenye naxa sisusa izinto ukusuka kwindawo ethile ukuya kwenye.

Zininzi iintlobo ezahluka-hlukileyo zothutho. Uninzi lwethu xa sithatha uhambo sihamba ezindleleni, kwimizila yoololiwe, nakwiindledlana zeenyawo. Sisebenzisa neenqwelo ezifana nezigadla kunye noololiwe ukuthutha izinto emhlabeni.



Masenze

Jonga imifanekiso. Yonke ibonisa iindlela ezahlukileyo zokusebenzisa iindlela kwezothutho. Krwela umgca wokutshatisa umfanekiso ngamnye negama elichanekileyo.



inqwelo yeedonki



isithuthuthu



ibhasi



ibhayisekile



imoto



isikuta



isigadla



itekisi



Masithethe

Thetha nomhlobo wakho ukuze niphendule le mibuzo.

Uya njani esikolweni yonke imihla?

Uya njani eklinikhi?

Ubatyelela njani abahlobo okanye izalamane zakho? Uya njani edolophini?





Masibhale

Bhala izivakalisi ezibini malunga nendlela oza ngayo esikolweni yonke imihla.

Two empty rectangular boxes for writing answers.

Umhla:

Gqibezela ezi zivakalisi.

Ututshala wam uza esikolweni nge _____.

Ndiya ekinikhi nge _____.

Xa ndisiya kwikhaya lomhlobo wam ndihamba nge _____.



Masithethe

Usebenzisa iintlobo ezininzi zezithuthi xa usiya esikolweni? Abanye abantwana eklasini yakho basebenzisa eziphi iindlela zothutho?

Jonga le grafu uze uphendule imibuzo

Abantwana abaninzi beklasi yakho beza ngantoni esikolweni?

Bangaphi abantwana abeza ngeemoto esikolweni?

Inani labantwana	5				
	4				
	3				
	2				
	1				
		Ngeenyawo	Ngetekisi	Ngebhasi	Ngemoto



Masifunde

Ngoku uyazi ukuba kukho iintlobo ezahlukeneyo zezithuthi ezihamba emhlabeni. Kukho neentlobo ezahlukeneyo zeendlela, umzekelo:

- iindlela zomhlaba kunye
- neendlela zetha.

Ezinye iindlela ezidibanisa izixeko zibanzi ngokuphinda-phindwe kabini kunezinye iindlela. Ezo zibizwa ngokuba ngoohola bendlela, kwaye kubo kukho iileyini ezimbini kwicala ngalinye, zingade zibe ne izithuthi ezihamba ngexesha elinye. Uholo wendlela ufana nendlela enkulu kodwa wona unamacala amabini ohlukeneyo. Kuhola wendlela ukwazi ukuya kwicala elinye kuphela.



Masithethe

Wakha wahamba kuhola wendlela? Ingaba kuxhaphake iindlela zomhlaba okanye ezetha apho uhlala khona? Yeyiphi indlela ekhuselekileyo – uholo wendlela omacala mabini okanye uholo wendlela ocalanye? Ngoba kutheni?

Titshala:
Sayina:
Umhla:

Uthutho emhlabeni: oololiwe



Masifunde

Uthutho ngendlela aluyondlela ekuphela kwayo yokuhamba emhlabeni. Sinako ukusebenzisa isiporo sikaloliwe. Iziporo ziindledlana ezenziwe ngentsimbi. Ezi ndlela kuthiwa yimizila kaloliwe. Oololiwe bahamba kule mizila. Bathwala abantu ukusuka kwidolophu ethile ukuya kwenye. Kuloliwe kukhwela abantu abaninzi



ngaphezu kwasemotweni okanye ebhasini. Uyakwazi ukuthwala izinto ezinzima nezininzi kunezo zithwalwa sisigadla.



Masithethe

Jonga imifanekiso uthethe nomhlobo wakho ngeentlobo ezahlukileyo zoololiwe.

Ngabaphi oololiwe abathutha abantu?

Ngabaphi oololiwe abathutha iimpahla?

Zeziphi izinto ezinokuthwalwa nguloliwe?

Ulooliwe okhwelisa abantu kuphela kuthiwa nguloliwe wabahambi. Ulooliwe olayisha iimpahla ngaphandle kwabantu kuthiwa nguloliwe weempahla okanye igutsi.



Ulooliwe osebenza ngombane



Ulooliwe obaselwayo



Ulooliwe obaleka kakhulu



Ulooliwe wedizili



Masenze

Krwela umgca ohambelana nohlobo lukaloliwe ongasekunene ukuze iinkcukacha ezichanekileyo zibe ngasekhohlo.

Umhla:

Usebenzisa amandla edizili.

Usebenzisa amandla omphunga.

Nguloliwe obaleka ngamendu aphezulu anokufikelela kuma-200 km ngeyure. Uloliwe wokuqala onamendu aphezulu eMzantsi Afrika yiGautrain eseGauteng.

Usebenzisa umbane ovela kwiintambo zombane ezihamba ngasentla kwesiporo.



Masenze

Yila uloliwe wakho umzobe kwesi sithuba usinikiweyo. Bonisa umhlobo wakho umfanekiso wakho. Xoxani ngeemilo nangemibala.



Masibhale

Phendula le mibuzo.

Uloliwe wakho uluhlobo olunjani lukaloliwe?

Kuyimalini ukukhwela uloliwe?

Uhamba aphelele phi uloliwe wakho?



Phuma phandle

- Ngcileza, tsiba, xhuma-xhuma, xhumela phambili uze ume ngeenyawo zombini.
- Ngoku yenza ibala lemiqobo olenzelwe ngutitshala wakho. Kufuneka ugwencele, ukhase, utshibilize okanye uxhume ukusuka entweni ukuya kwelandelayo. Zama ukwenza oku uthwele ingxowa yeembotyenti.



Uthutho ngomoya

Masifunde

Ukuza kuthi ga ngoku ufunde ngeentlobo zezithuthi ezihamba emhlabeni. Siyakwazi nokuthatha uhambo emoyeni. Kukho iintlobo ezahlukeneyo zezithuthi ezihamba emoyeni.

1. Sisebenzisa inqwelomoya xa sibhabhela kwiindawo ezikude.
2. Imoto ikwazi ukuhamba ngesantya esili-120 km ngeyure.
3. Uloliwe ohamba ngesantya esiphezulu unako ukuhamba ngesantya esingama-200 km ngeyure.
4. Inqwelomoya yona iyakwazi ukuhamba ngesantya esingama-955 km ngeyure! Inqwelomoya nehelikopta zinee-injini ezomeleleyo kakhulu. Iibhaluni ezihamba ngomoya oshushu neziwuzi azinazo ii-injini.
5. Iibhaluni ezikhelwayo ezihamba ngomoya oshushu zona zibhajiswa ngumoya oshushu. Iziwuzi zona zinamaphiko okuzigcina zisemoyeni. Abantu badla ngokusebenzisa iibhaluni ezikhelwayo ezihamba ngomoya oshushu kunye neziwuzi xa bezonwabisa nakwezemidlalo.
6. Oosomajukujuku baya emajukujukwini ngesiphekepheke.



Masenze

Krwela umgca osuka kumfanekiso ngamnye uye egameni elichanekileyo.

ihelikopta

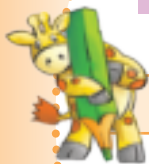
inqwelomoya yabahambi

Isiwuza

Ibhaluni yomoya oshushu

isiwuzi esijingiswayo

Isiphekepheke



Masibhale

Yenza ngathi unyuka ngebhaluni yomoya oshushu. Ubona ntoni xa uphezulu?
Bhala izinto ezintathu ozibonayo.





Masithethe

Umhla:

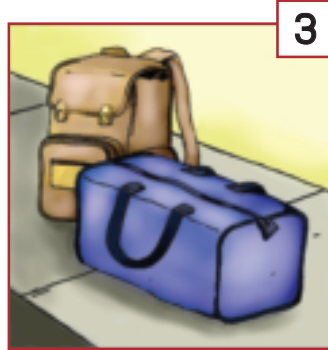
USuzi nomnakwabo uNorman baza kutyelela abazala babo eRhawutini. Baza kubhabha ukusuka eKapa. Jonga imifanekiso uze uthethe nomhlobo wakho malunga nento abayenzayo.



1



2



3



4



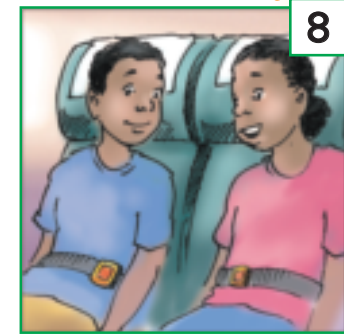
5



6



7



8



Masibhale

Funda izivakalisi ezingezantsi. Ngoku jonga imifanekiso kwakhona uze ufake iinombolo kwizivakalisi ngokolandelelwano oluchanekileyo ukusuka ku-1 ukuya kwisi-8.

	Kuveyishwa iibhegi zikaSuzi noNorman.
	USuzi noNorman basiwa ngabazali ngemoto kwisikhululo seenqwelomoya.
	Bafumana amatikiti abo okukhwela kwikhawuntala yoqwalaselo lokungeniswa.
	Umamkeli-bahambi weenqwelomoya usa uSuzi noNorman kwindawo eqwalasela ukhuseleko.
	USuzi noNorman banyuka ngamanqwanqwa ukuya kungena kwinqwelomoya.
	USuzi, uNorman nabazali babo baya kwikhawuntala yoqwalaselo lokungeniswa.
	Bahlala phantsi baze babophe amabhanti ezihlalo.
	Babulisa abazali ngezandla phambi kokuhamba.





Uthutho ngamanzi



Masifunde

Indlela yokugqibela yothutho yeyamanzi. Abantu babesebenzisa amanzi xa behamba-hamba naxa bethutha izinto iminyaka emininzi. Sihamba ngolwandle xa sityelela amanye amazwe, kwaye sisebenzisa imilambo namachibi xa sisiya kwiindawo ezahlukileyo zamazwe ethu.



Masibhale

Sihamba njani emanzini? Jonga le mifanekiso ingezantsi uze uncokole nabahlobo bakho malunga neentlobo ezahlukeneyo zezithuthi esizisebenzisayo ukuhamba emanzini.



Iphenyane lokuloba

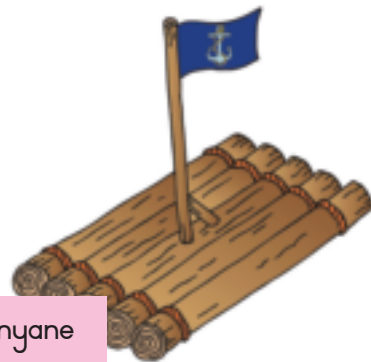


Iphenyane



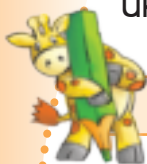
Iphenyane lenjini

Inqanawa yabahambi



Umcangatho wephenyane

Ucinga ukuba abantu basebenzisa ntoni xa behamba emlanjeni omncinane? Basebenzisa ntoni abantu ukunqumla elwandle besiya kwelinye ilizwe? Ucinga ukuba abantu balisebenzisa xa besiya kude okanye kufuphi iphenyane lenjini?



Masibhale

Ngoku bhala isivakalisi esinye ngohlobo ngalunye lwephenyane nento elisetyenziselwa yona.

Three empty rectangular boxes for writing answers.





Masithethe

Thetha ngale mibuzo nomhlobo wakho.

- Loluphi uhlobo lwesithuthi olukulungeleyo? Kutheni ukhetha olu hlobo?
- Yeyiphi indlela yothutho eyiyeyona icotha kakhulu?
- Yeyiphi indlela yothutho eyiyeyona ikhawuleza kakhulu?
- Yeyiphi indlela yothutho lwendlela esetyenziswa ngutitshala wakho xa esiya esikolweni?
- Ungamsebenzisa phi uloliwe obaleka ngesantya esiphezulu eMzantsi Afrika?



Umhla:



Masenze

Zoba umfanekiso wesithuthi osithanda kakhulu. Singaba yimoto, iphenyane, inqwelomoya okanye ibhayisekile. Unako nokuzoba ihashe.



Phuma phandle

Dlala igusha nengcuka:

Yahlula abafundi ngokwamaqela amabini: iqela lokuqala ziingcuka, elinye ziigusha. Phawula "ubuhlanti" apho zigcinwa khona iigusha ezibanjiweyo. Akuba enze umqondiso othile utitshala, iingcuka zizama ukubamba iigusha. Iigusha ezibanjiweyo zifakwa "ebuhlanti". Ezinye iigusha zizama ukuvulela iigusha ezivalelweyo ngokuzichukumisa. Msinyane zakuchukunyiswa iigusha ezivalelweyo, zibuyela emdlalweni kwakhona.



Titshala:

Sayina:

Umhla:



Okunye ngothutho lwasemanzini



Masithethe

Jonga imifanekiso uze uthethe ngayo nomhlobo wakho.

Wawukhe wazibona izithuthi ezifana nezi?

Sesiphi esinako ukuhamba phantsi kwamanzi?

Ingaba akhona amagama owaziyo ezi ntlobo zezithuthi zasemanzini?



Masifunde

Funda ezi zivakalisi zingezantsi, uze ujonge imifanekiso. Tshatisa iqela ngalinye lezivakalisi nomfanekiso. Bhala inombolo echanekileyo ecaleni komfanekiso

1. Iphonti okanye isikhitshana siwelisa abantu, iimoto nezinye izinto emlanjeni. Kukho iphonti elolu hlobo eMalgas eNtshona Koloni. Ikhwelisa iimoto nabantu ibawelise umlambo iBreede.



2. Inqanawa entywilayo inkwili ihamba ngaphantsi kwamanzi. Uninzi lweenqanawa ezintywilayo zinkulu kakhulu kwaye ziyakwazi ukuthwala abantu abaninzi. Ezona nqanawa zintywilayo zinkulu ziyakwazi ukuhlala ngaphantsi kwamanzi iinyanga ezininzi.



3. Abanye abantu bahlala kwizindlu zamaphenyane. Abakhenkethi abaya eholidayini kwiindawo ezifana neKariba eZimbabwe, banako ukuhlala kwindlu yephenyane bahamba-hambe echibini.





Masifunde

Umhla:

Ufunde ukuba oololiwe basebenzisa iintlobo ezahluka-hlukileyo zamandla ukuze bakwazi ukuhamba. Nawo amaphenyane asebenzisa iintlobo ezahluka-hlukileyo zamandla. Amanye amaphenyane asebenzisa amandla abantu. Kodwa akhona asebenzisa amandla epetroli okanye awomphunga. Maninzi amaphenyane asebenzisa amandla omoya.



Masibhale

Faka uphawu lokukorekisha kwiimpendulo ezichanekileyo zale mibuzo.

Isikhitshana esibhexeshwayo sisebenzisa oluphi uhlobo lwamandla?

idizili	
abantu	
umoya	



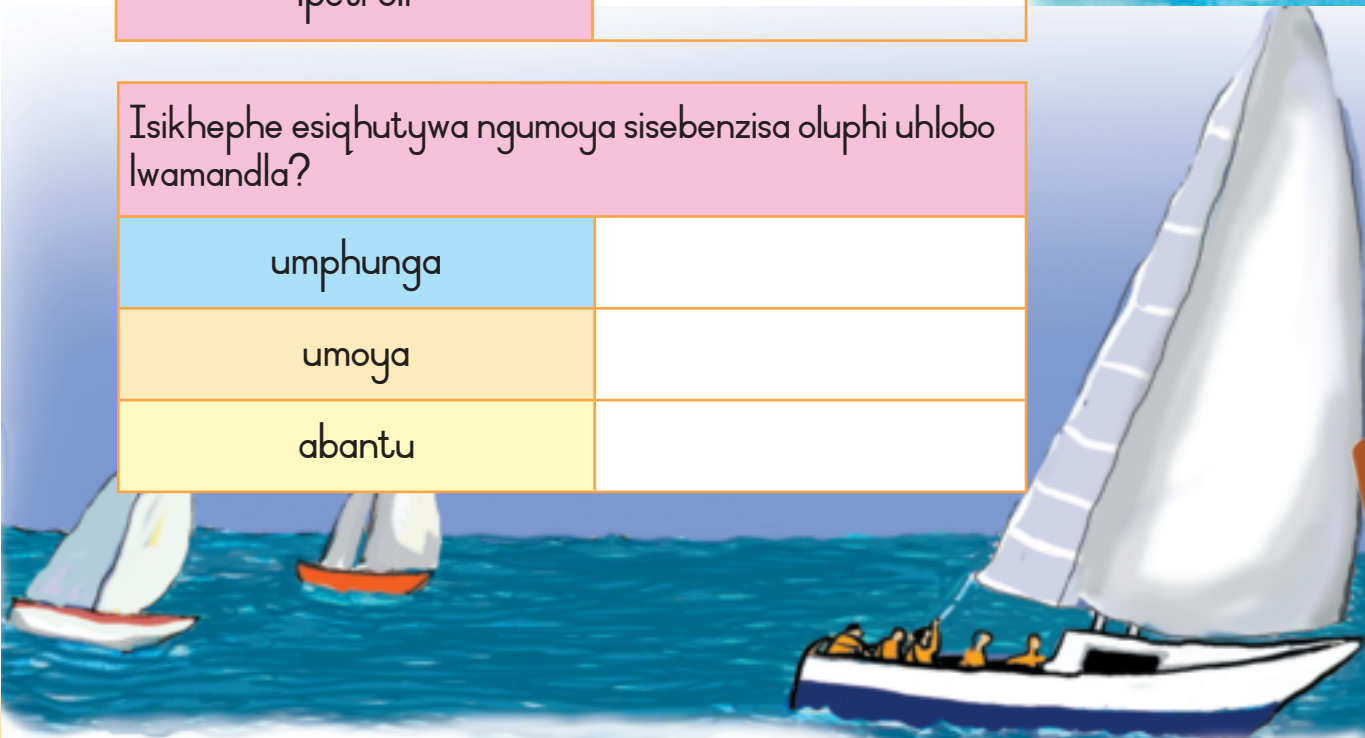
Iphenyane lenjini lisebenzisa oluphi uhlobo lwamandla?

umoya	
umphunga	
ipetroli	



Isikhephe esiqhutywa ngumoya sisebenzisa oluphi uhlobo lwamandla?

umphunga	
umoya	
abantu	

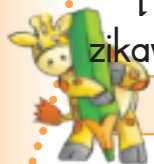


Titshala:
Sayina:
Umhla:

Uthutho lukawonke-wonke

Masithethe Ingaba imoto yenqununu yakho sisithuthi sikawonke-wonke. Yintoni isithuthi sikawonke-wonke? Ukhona umntu onebhayisekile esisithuthi sikawonke-wonke? Ingaba ibhasi inako ukuba sisithuthi sikawonke-wonke?

Masifunde Isithuthi sikawonke-wonke sisithuthi esisetyenziswa nangubani na, kodwa kufuneka usihlawulele itikiti. Oololiwe, iibhasi, iinqwelomoya, iitekisi kunye nezikhitshane zingasetyenziswa njengezithuthi zikawonke-wonke.



Masibhale

Zeziphi iintlobo zezithuthi zikawonke-wonke okhe wazisebenzisa? Yintoni ekufuneka ukuba uyenze phambi kokusebenzisa isithuthi sikawonke-wonke?



Masenze

Abantu basisebenzisa xa kutheni isithuthi sikawonke-wonke? Yenza uphando eklasini ngeentlobo ezahlukileyo zezithuthi zikawonke-wonke ezisetyenziswe ngabanye eklasini. Faka umbala kwibloko ekwitheyibhile engezantsi ngohlobo ngalunye lwezithuthi zikawonke-wonke olusetyenziswe ngumntu ngamnye.

Inani labantwana ofunda nabo

11				
10				
9				
8				
7				
6				
5				
4				
3				
2				
1				
	Itekisi	Ulooliwe	Ibhasi	Inqwelomoya





Umhla:



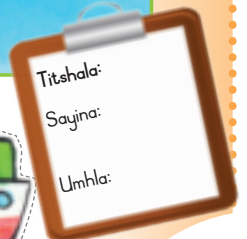
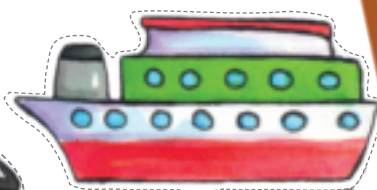
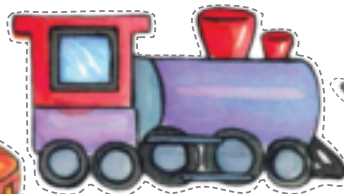
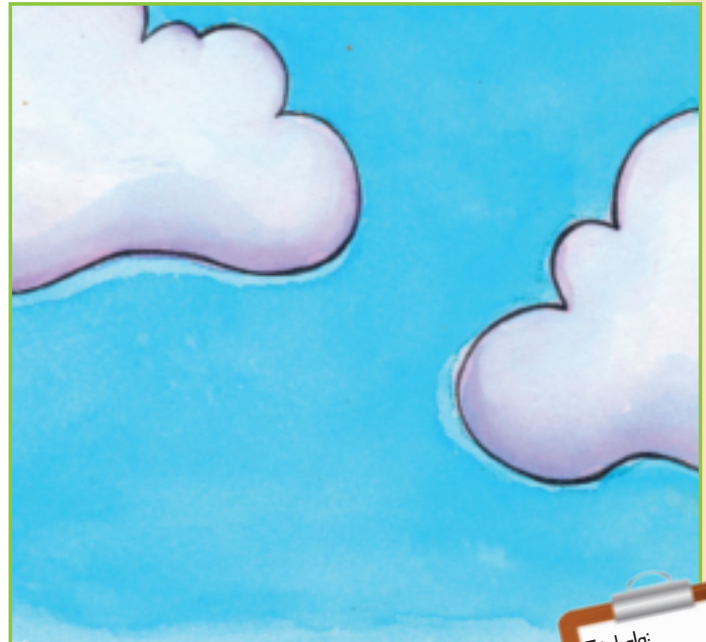
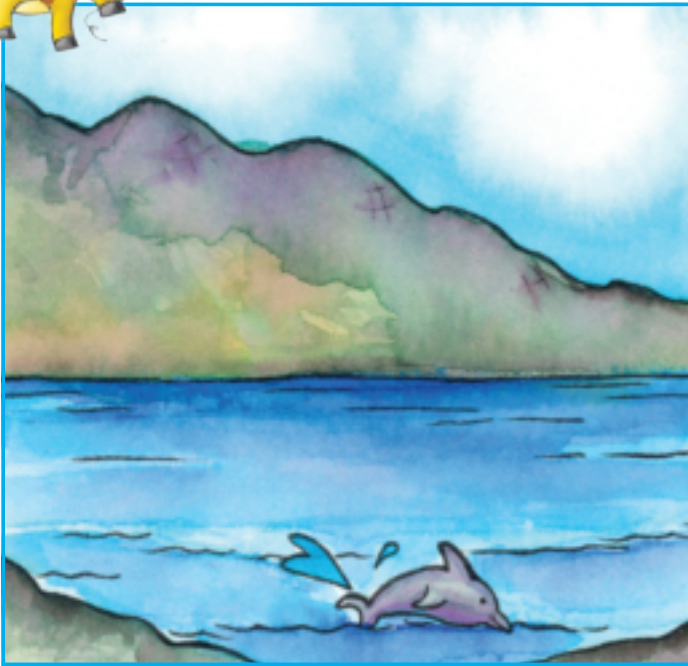
Masenze

- Sebenzisa izinto ezisebenzisekayo kwakhona wenze inqwelo engasetyenziswa njengesikhongozeli sepenisile.
- Peyinta okanye uhombise inqwelo yakho.



Masenze

Sikani imifanekiso yeentlobo ngeentlobo zezithuthi ezingezantsi kweli phepha okanye kwiphephandaba okanye kwimagazini. Ncamathelisani umfanekiso ngamnye kwindawo echanekileyo.



Titshala:
Sayina:
Umhla:





43

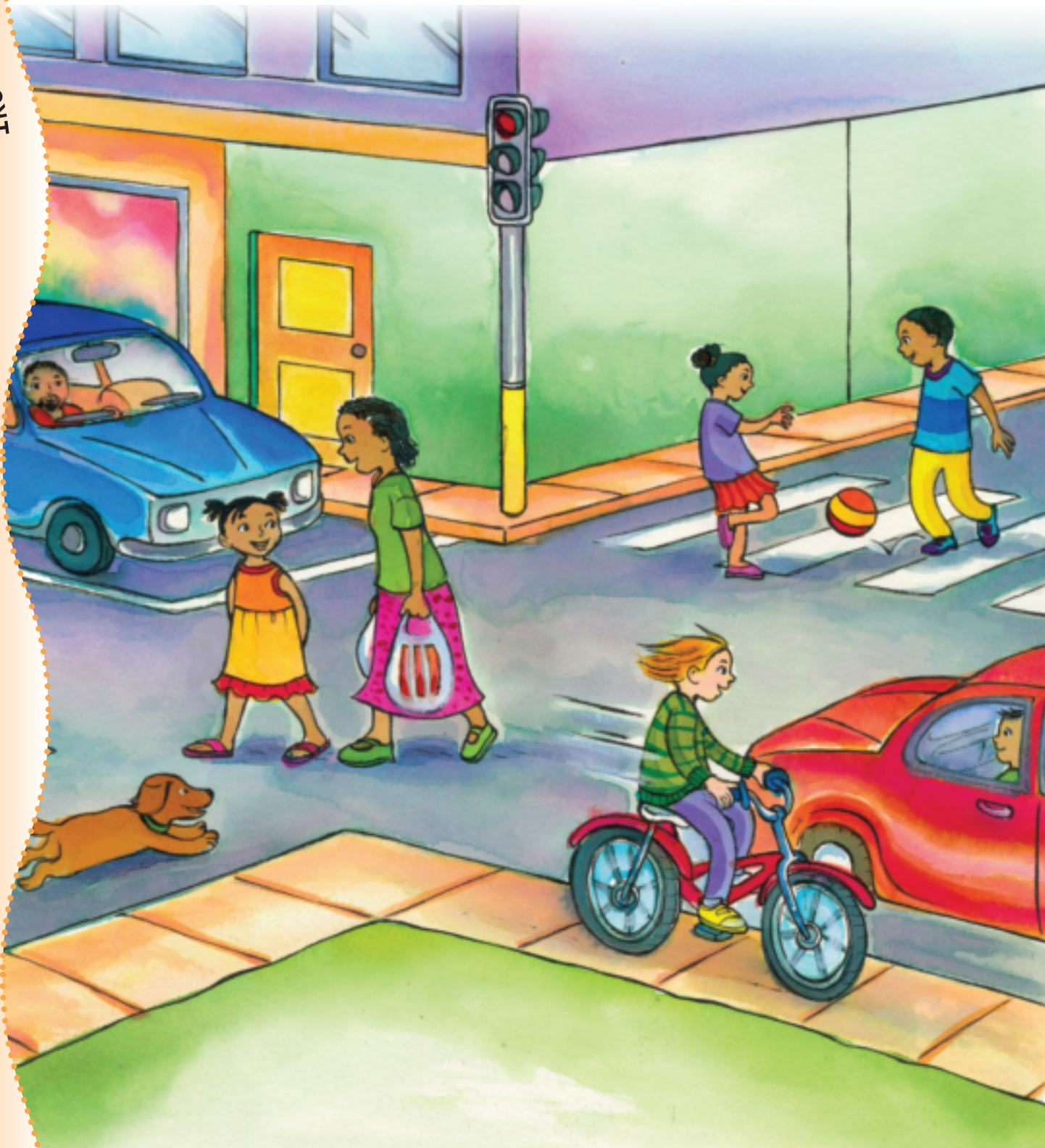
Ukhuseleko endleleni

Ikota 3 – Iveki 6



Masithethe

Abantu abasemfanekisweni baphula imithetho yendlela. Thetha nomhlobo wakho ngento abayenzayo engalunganga. Kutheni kufuneka sithobele imithetho yendlela nje?





Umhla:



Masifunde

Phantse yonke imihla sifunda okanye sive ngabantwana abatshayiswe yimoto endleleni eya esikolweni nokuba bahamba ngenyawo okanye ngebhayisekile. Ungaqinisekisa ukuba ukhuselekile endleleni ukuba uthobela imithetho yendlela.



Imithetho yabahambi-ngeenyawo

- Phambi kokunqumla indlela, qho kufuneka ujonge ekunene nasekhohlo, uphinde ujonge ekunene ukuze uqiniseke ukuba akukho zimoto, zibhayisekile, zitekisi nazibhasi zizayo.
- Ukuba indlela iyaphithizela, khangela isitalato esinophawu oluthi yima okanye irobhothi kungenjalo indawo yokuwela abahambi ngenyawo enemigca.

- Xa kukho indawo enemigca emhlophe yokunqumla abantwana besikolo, sebenzisa yona. Ezo ziindawo ezikhuselekileyo zokunqumla indlela.
- Ungahambi phakathi endleleni. Hamba kwipheyivimenti. Ukuba ayikho, hambela kude kangangoko ezimotweni. Qho, hamba ngasekunene ukuze ubone izithuthi ezizayo.
- Musa ukudlala nayiphi imidlalo kufuphi nendlela.
- Qaphela kangangoko unako phambi kokunqumla kwindawo engena iimoto okanye emgaqweni ekujikwa kuwo.

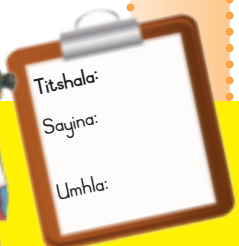
Imithetho yabantu abakhwele iibhayisekile

- Qiniseka ukuba yonke into ilungile kwibhayisekile yakho. Jonga amavili akho, iziqhoboshi, izinyathelo, itsheyina, iimpondo zokubambelela, ihutara kunye nezibane phambi kokuba ukhwele ibhayisekile yakho.
- Ebusuku okanye xa ukukhanya kuluzizi, kufuneka isibane esiqaqambileyo ngaphambili kwibhayisekile yakho, nesincamatheli esikhazimlayo ngasemva.
- Nxiba ihelimethi eyomeleleyo rhoqo xa ukhwele ibhayisekile. Iya kukukhusela entloko xa unokuwa okanye xa udibana nengozi. Umnqwazi wehelimethi ungabusindisa ubomi bakho.
- Xa kukho indledlana yeebhayisekile, sebenzisa yona kunendlela yeemoto.
- Yenza isicwangciso sokuya esikolweni.
- Sebenzisa eyona ndlela ikhuselekileyo, ingabi yeyona imfutshane nje kuphela.
- Sebenzisa imiqondiso echanekileyo necacileyo yezandla xa ubonisa ukujika.
- Ungaze uhambe ngebhayisekile ecaleni komnye umntu okhwele ibhayisekile – landelelanani omnye emva komnye ngalo lonke ixesha.
- Musa ukudlala ngebhayisekile xa uyiqhuba endleleni.



Phuma phandle

Cela utitshala wakho akubonise indlela ekhuselekileyo yokuziqengqa uye phambili uphinde uye emva.





44

Imithetho yendlela

Ikota 3 – Iveki 6



Masibhale

Phinda ujonge umfanekiso okwiphepha lama-22. Phendula ke ngoku le mibuzo.

Bangaphi abantu abaphula imithetho yendlela?

Inkosikazi ephethe izingxobo yaphula owuphi umthetho?

Intombazana ekhwele ibhayisekile yaphula imithetho emingaphi?

Yeyiphi loo mithetho bayaphulayo?

Kungenzeka ntoni exhegweni?

Kufuneka wenze ntoni qho phambi kokunqumla indlela?



Masithethe

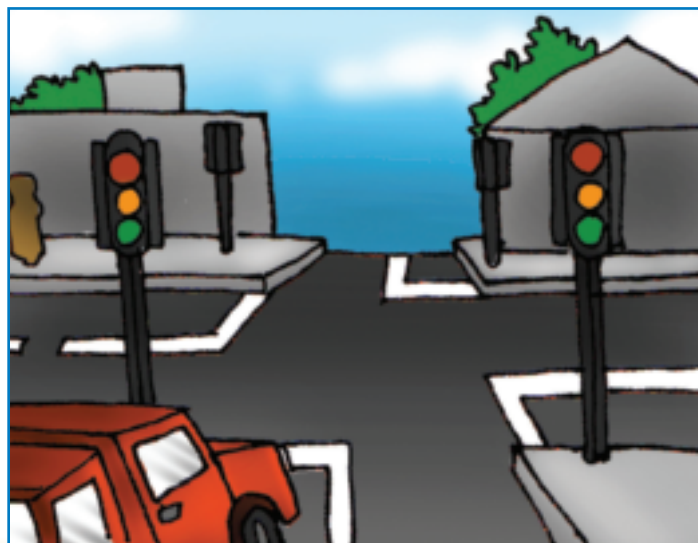
Iirobhothi zinezibane ezithathu.

Yeyiphi imibala yazo?

Ithetha ntoni le mibala?

Ngowuphi umbala ongasentla?

Ngowuphi umbala ophakathi?

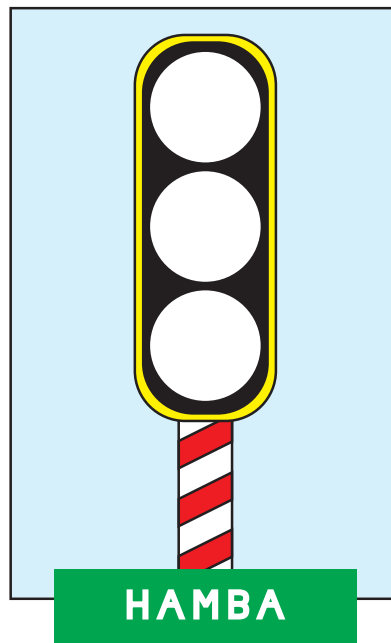
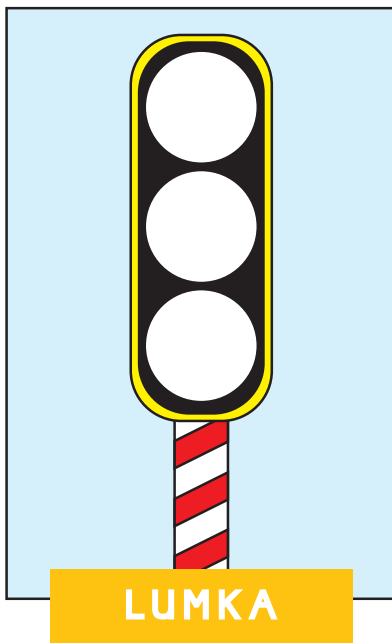
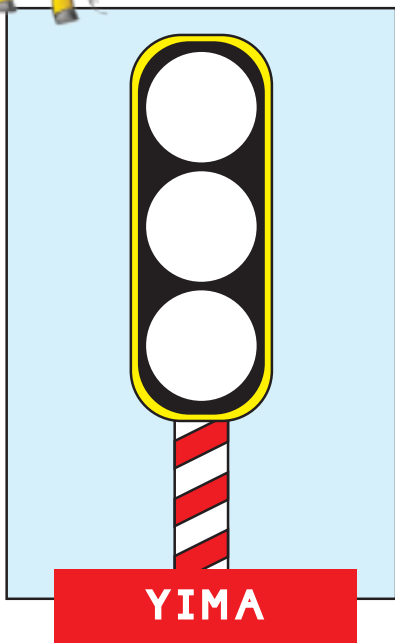




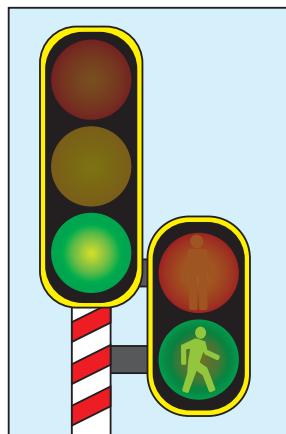
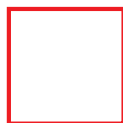
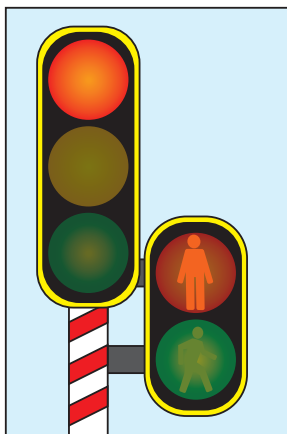
Masenze

Faka imibala kwizibane zezi robhothi ukuze umbala uhambelane negama elingezantsi. Wakugqiba xela okuthethwa luphawu ngalunye lwendlela.

Umhla:



Faka uphawu lokukorekisha (✓) ebhokisini esecaleni kwerobhothi ebonisa ukuba kukhuselekile ukunqumla indlela.



Phuma phandle

- Phosa ingxowa yeembotyji phezulu uze uyigange. Ngoku yiphosele phambili kangangoko unako.
- Sebenza nomhlobo wakho. Nikanani amathuba okuphosa nokuganga ibhola.
- Sebenzani ngokwamaqela. Jongani ukuba iqela lenu lingaphosela iingxowa zeembotyji ezingaphi ebhasikitini kwimizuzwana engama-60.





Oolindela besikolo



Masithethe

Jonga emfanekisweni uze uthethe nomhlobo wakho ngawo.

- Yintoni ulindela wesikolo?
- Ubanceda njani abafundi?
- Ubaluleke ngantoni kuwe?



Masibhale

Phendula le mibuzo.

Ingaba kulungile ukuba abafundi banqumle indlela bebodwa?

Kutheni ucinga njalo nje?

Babakho nini oolindela besikolo?

Umbona njani umntu olilungu loolindela besikolo?

Oolindela besikolo bazimisa njani izithuthi?

Babanqanda njani abafundi ukuba bangayinqumli indlela?





Masenze

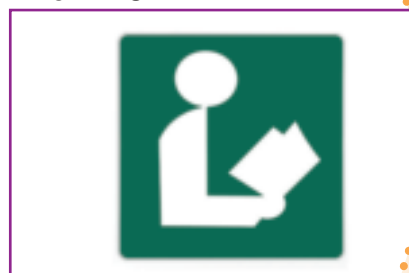
UDumisani nomama wakhe baya elayibrari ngeenyawo. Endleleni, babona iimpawu zendlela. Ithetha ntoni? Tshatisa uphawu ngalunye nentsingiselo yalo.

Umhla:



Abavumelekanga abahamba ngeenyawo.

Kukho uphawu oluthi YIMA.



Abahamba ngeenyawo banganqumla.

Ilayibrari



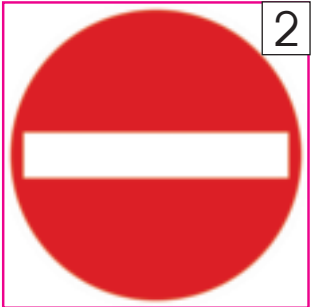
Kukho indawo ezinqumlana kuyo iindlela.

Ngabahamba ngeenyawo kuphela abavumelekileyo.



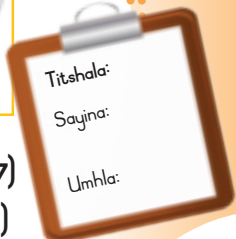
Masibhale

UNtombi notata wakhe bahamba ngemoto ukuya edolophini ukuya kuthenga izinto ezithile. Babona ezi mpawu zendlela. UNtombi ubuza utata wakhe ukuba zithetha ntoni. Wena uyazazi ukuba zithetha ntoni? Sebenza nomhlobo wakho nibhale phantsi afanele ukukwenza utata kaNtombi xa ebona ezi mpawu kwakhona. Ukuze ujonge ukuba iimpendulo zakho zichanekile na, gqwetha incwadi uyijongise ezantsi.



(1) Yima kuphawu lwendlela (2) Musa ukungena apha. (3) Akuhanywa apha. (4) Akvumelekanga ukugqitha kwimoto ephambi kwakho

Iimpendulo:





46

Asinceda njani amagosa endlela?

Ikota 3 – Iveki 7



Masithethe

Jonga umfanekiso uze uphendule imibuzo.

Hlobo luni lwepolisa olu?

Wazi ntoni ngamagosa endlela?



Masibhale

Ngoku phendula le mibuzo.

Lenza ntoni igosa lendlela?

Lingakunceda njani igosa lendlela?

Ucinga ukuba yintoni unobangela wokuba le moto yamapolisa ipakwe ngolu hlobo?





Masithethe

Jonga emfanekisweni uze uthethe nomhlobo wakho ngawo.

Umhla:



Masibhale

Phendula le mibuzo.

Yintoni engalunganga eyenziwe ngumqhubi wemoto ezuba?

Ucinga ukuba kufuneka lenze ntoni ipolisa eliligosa lendlela?



Masenze

Sebenzisa iikawusi ezindala ukwenza iiphaphethi zezandla. Wena nomhlobo wakho ningasebenzisa ezi phaphethi nibonise umkhweli bhayisekile owela iirobhothi zibomvu. Omnye wenu makabe ngumkhweli bhayisekile omnye abe ligosa lendlela



Phuma phandle

1. Balekani nigqibe yonke indawo enifuna ukuba kuyo ebaleni lokudlala.
 - Xa utitshala wenu esithi yekani, yimani ngxi kanye apho nikhoyo.
2. Utitshala wenu uza kunahlula ngokwamaqela.
 - Niza kwenza ugqatso lonikezelwano, irileyi.
 - Iqela eliphumelela kwimidyarho emininzi lilo eliphumelelayo.



Abanye abantu abasancedayo



Masithethe

Thetha nomhlobo wakho malunga nabantu abanokukunceda kwindawo ohlala kuyo.



Masenze

Krwela umgca utshatise imifanekiso engasekunene kunye nezivakalisi ezingasekhohlo.

Ndancedisa abantu elayibrari ukuba bathathe iincwadi okanye bafumane ulwazi. Ngamanye amaxesha ndibalisela abantwana amabali.

Ndiyazithanda izilwanyana. Ndanceda izilwanyana ezigulayo okanye ezonzakeleyo.

Ndiniphathela iileta zenu ezivela eposini ndizifake ebhokisini yenu yeposi ekhaya.

Ndiyakunceda xa uqaqanjelwa lizinyo. Ndikubonisa indlela yokugcina amazinyo akho esempilweni entle.

Ndanceda abantwana nabantu abadala abagulayo. Ndibanika amayeza nezitofu ukuze kuphucuke imeko yabo.

Ndiqinisekisa ukuba izitalato zicocekile. Qho ngeveki, ndiza ngelori yenkunkuma ukuza kususa inkunkuma ekhayeni lakho.





Umhla:



Masenze

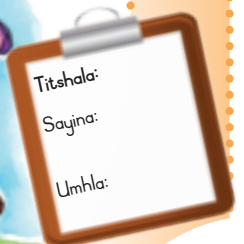
Zoba apha
umfanekiso womntu
owenza uhlobo
lomsebenzi ofuna
ukuwenza.

Ngowuphi umsebenzi wena onokuthanda ukuwenza wakugqiba ukufunda? Xela ukuba kutheni ufuna ukwenza lo msebenzi nje.



Phuma phandle

- Bambelela kwileli yabantwana yokujima uze uzityhale uye phambili ubambelele.
- Wena nomhlobo wakho yenzani ikiliva. Jongani ukuba niza kude niyokufika phi na.
- Utitshala wakho uza kudlala umculo. Ukwenza uzive njani lo mculo? Uyonwabisa, uyangxunguphalisa okanye ukwenza uzole.





48

Ikota 3 – Iveki 9

Umsebenzi olungileyo ekuhlaleni



Masenze

Krwela umgca osuka kuhlobo lomsebenzi ongasekhohlo uye kwigama elihambelana nawo ngasekunene.

umthengisi weentyatyambo
umcimi-mlilo
ugqirha
umpheki
umthungi
utitshala
umlungisi weenwele
umbhali

incwadi
isikere
ukutya
iintyatyambo
amayeza
inqwelo yabacimi-mlilo
abafundi
iimpahla



Masifunde

Namhlanje uNorman ubenosuku oluxakeke kakhulu. Uqale ngokuya kwithala leencwadi ukuya kukhangela incwadi emalunga nomdlalo weqakamba. Ucele unoncwadi ukuba amncede. Emva koko uye waya eposini ukuya kuthenga izitampu. Endleleni ebheka ekhaya uye wadlula eklinikhi ukuya kuthatha amayeza kamakhulu wakhe. Uye wadlula kwiqela lebhola ekhatywayo lengingqi wabuza umphathi walo ukuba unini na umdlalo olandelayo. Umphathi weqela uye wamxelela ukuba aye kujonga kwibhodi yezaziso. Ekugqibeleni, ude wafika kowabo uNorman, akufika wafumanisa ukuba indlu izaliswe ngamanzi. Kuye kwafuneka afowunele umtywini mibhobho kuba umbhobho wasendlwini yokuhlambela wawugqabhukile.



Masibhale

Funda le mibuzo uze ube nomfanekiso-ngqondweni kaNorman ucinge ukuba ubeza kuthini kumbuzo ngamnye uze ubhale phantsi.

Ngoobani abantu abane abaye banceda uNorman namhlanje?

UNorman uye wathini kunoncwadi?





Umhla:

UNorman uye wathini kusokhemesti?

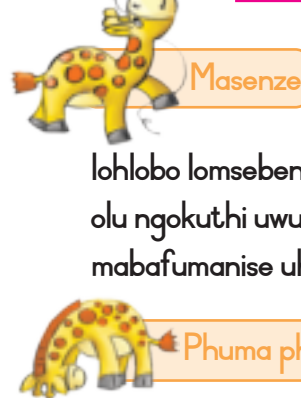
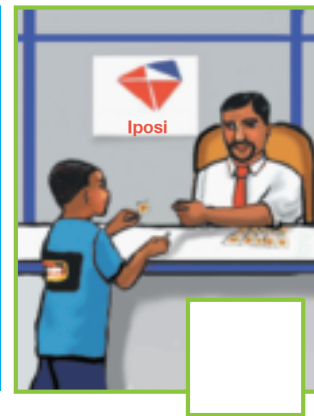
UNorman uye wathini kumphathi weqela lebhola ekhatywayo ebaleni?

Uye wathini uNorman kumtywini mibhobho?

Uye wathini uNorman eposini?



Jonga imifanekiso. Ibonisa uNorman esenza yonke imisebenzi yakhe, kodwa ixuba-xubene. Yifake iinombolo ngokokulandelelana kwayo.



Xa ilithuba lakho, utitshala wakho uza kukuvumela ukuba uthathe iphepha ebhokisini. Jonga igama elisephapheni kodwa ungalibonisi mntu. Uza kubona igama lohlobo lomsebenzi. Ngoku bonisa iklasi ukuba luhlobo luni na lomsebenzi olu ngokuthi uwulinganise kodwa ungathethi. Abanye abafundi mabafumanise uhlobo lomsebenzi obabonisa wona.



- Phosa ibhola yententya phezulu uze uyigange. Yiphose kwakhona, phezulu kunakuqala, uze uyigange. Yiphosele phezulu kakhulu, uyibambe.

Utitshala wakho uya kukunika isazinge sokudlala.

- Beka isazinge sokudlala emhlabeni. Qakathisa ibhola ngaphakathi kwesazinge sokudlala ngesandla sakho sasekunene ukuze uyibambe ngesandla sakho sasekhohlo. Ngoku tshintsha izandla. Hamba ujikeleze isazinge ngaphandle ubhampisa ibhola ngaphakathi. Qala ukwenze oku ngesandla esithile, uze utshintshale kwesinye. Yima ngaphakathi kwesazinge uze ubhampisa ibhola ngaphandle kwesazinge usijikeleze.
- Hamba gosogoso phakathi kwezinto ezibekiweyo ngeli lixa ubhampisa ibhola yententya.





Masenze

Ilizwe lethu, uMzantsi Afrika

Jonga imephu yaseMzantsi Afrika. Beka uphawu lukangxabalaza (x) emephini kwiphondo ohlala kulo. Ukuba uhlala kwenye yeedolophu okanye kwisixeko esikhoyo emephini sibiyele ngesangqa. Ukuba uhlala kwenye indawo beka uphawu lukangxabalaza emephini apho ucinga ukuba uhlala khona.





Masibhale

Jonga imephu kwakhona uze uphendule le mibuzo.

Umhla:

Uhlala kweliphi iphondo?

Yintoni igama lendawo ohlala kuyo?

Ngawaphi amaphondo akufutshane kwiphondo ohlala kulo?

Xa abantu abavela kwezinye iindawo betyelela iphondo lakho, bafuna ukubona ntoni?



Masibhale

Cingela xa ubuza kutyelela amanye amaphondo amabini. Ngawaphi amaphondo ofuna ukuwatyelela? Bhala into ibe nye okanye zibe mbini ofuna ukuzibona kwiphondo ngalinye.

Igama lephondo	Izinto ofuna ukuzibona

EMzantsi Afrika, kukho iilwimi ezilishumi elinanye ezisemthethweni. Bhala amagama eelwimi ezine kwezo. Ingaba wena nabahlobo bakho niyazithetha ezi lwimi? Bhala amagama abo ecaleni kweelwimi abazithethayo.

	Ulwimi olusemthethweni	Abantu endibaziyo abaluthethayo
1.		
2.		
3.		
4.		





50

Iflegi yeSizwe

Ikota 4 - Iveki 1



Masenze

UMzantsi Afrika wafumana iflegi entsha ngomhla wama-27 kwekaTshazimpuzi 1994. Yiflegi yethu yesizwe kuba yeyelizwe lethu. Yifake imibala. Sebenzisa le mibala kwiinombolo ezisemfanekisweni:

1 = obomvu 

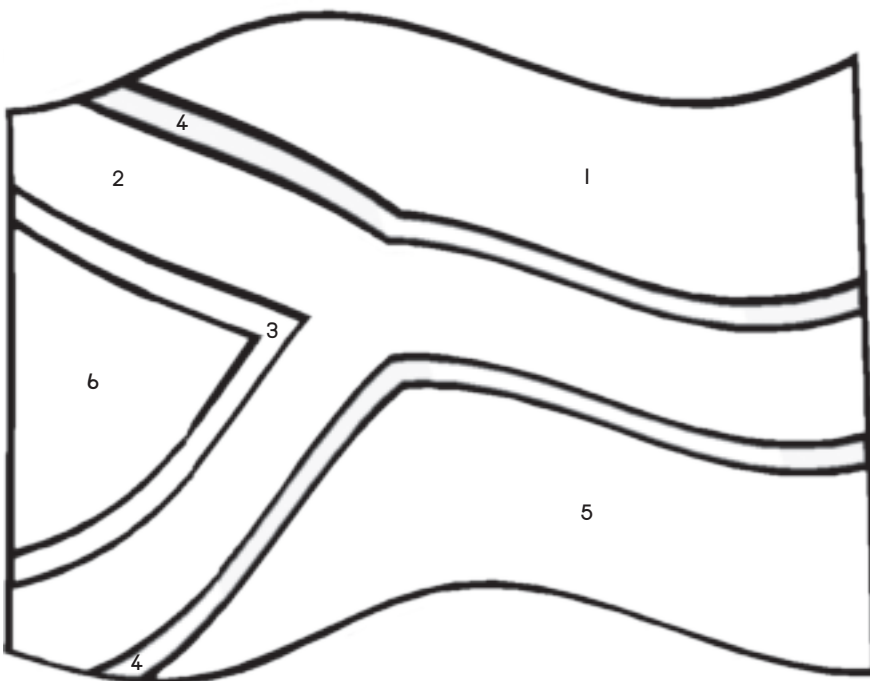
2 = oluhlaza 

3 = omthubi 

4 = omhlophe 

5 = ozuba 

6 = omnyama 



Masithethe

Thetha nomhlobo wakho ngeendawo onokubona kuzo iflegi yaseMzantsi Afrika.

Ikhona iflegi yaseMzantsi Afrika esikolweni sakho?

Ingaba zikhona ezinye iindawo ekuhlaleni apho ubona khona iflegi?

Ingaba isikhululo sakho samapolisa sinayo iflegi?



Masibhale

Iflegi yesizwe siyibona kweziphi iziganeko? Bhala ezinye iziganeko ezi-3 okanye ezi-4 apho iflegi yesizwe iphetshezeliwa khona.

Four horizontal lines provided for writing answers to the questions.



Masibhale

Umhla:

Funda ezi zivakalisi. Fakela uphawu lokukorekisha (✓) ukuba isivakalisi siyinyaniso nonongxabalaza (x) xa singeyonyaniso.

	✓	x
Iflegi yayiqala ukubhajiswa ngomhla wama-27 kwekaTshazimpuzi 1994.		
Mibini imibala eseflegini.		
UMzantsi Afrika usoloko unale flegi inye ukususela ngomhla wama-27 kwekaTshazimpuzi 1994.		
Unako ukuyibona iflegi kwisikhululo samapolisa.		



Masithethe

Jonga umfanekiso. Thetha nomhlobo wakho ngokwenziwa ngabadlali bebhola ekhatywayo emfanekisweni.



Phuma Phandle

Yenzani isangqa nibambane ngezandla.

- Phala ndaweninye.
- Tsiba amanyathelo alishumi ubuye umva.
- Ngcileza amatyeli amathandathu ngonyawo ngalunye.
- Thattha amanyathelo amathathu uye ngasekhohlo uze uphinde uthathe amanye amanyathelo amathathu uye ngasekunene.
- Hamba ngecala uphithanise imilenze.
- Yima!

Inqaku likatitshala:
Bonisa imiyalelo koonotsheluzi.





Umhobe wesizwe nembasa yesizwe



Masifunde

Sinomhobe wesizwe omnandi. Igama lawo lithi “Nkosi Sikelel’ iAfrika”, ngesiNgesi kuthiwa “God bless Africa”. Iivesi ezintathu zokuqala zikwisiXhosa, isiZulu neSesotho. Iivesi zokugqibela ezimbini zingesiBhulu nangesiNgesi.



Masicule

Nanga amazwi kaNkosi sikelel’ iAfrika. Uyakwazi ukuwacula? Masizame.

	Amazwi omhobe	Umhobe ngesiNgesi
ngesiXhosa	Nkosi sikelel’ iAfrika Maluphakanyisw’ uphondo lwayo,	Lord, bless Africa May her spirit rise,
ngesiZulu	Yizwa imithandazo yethu, Nkosi sikelela, thina lusapho lwayo.	Hear our prayers, Lord bless us, her children.
ngesiSotho	Morena boloka setjhaba sa heso, O fedise dintwa le matshwenyeho, O se boloke, O se boloke setjhaba sa heso, Setjhaba sa, South Afrika – South Afrika.	Lord, we ask that our nation be protected, That all conflicts are ended. Protect us, protect our nation, our nation, South Africa, South Africa.
ngesiAfrikaans	Uit die blou van onse hemel, uit die diepte van ons see, Oor ons ewige gebergtes waar die kranse antwoord gee,	Ringling out from our blue heavens, From our deep seas breaking round, Over ever-lasting mountains, Where the echoing crags resound
ngesiNgesi	Sounds the call to come together, And united we shall stand, Let us live and strive for freedom In South Africa our land.	



Umhla:



Masibhale

Abantu bawucula xa kutheni umhobe wesizwe? Fakela uphawu lokukorekisha (✓) xa siyinyaniso isivakalisi okanye ungxabalaza (x) xa singachanekanga.

	✓	x
Abantu bacula uMhobe weSizwe ecaweni.		
Iqela laBafana Bafana licula uNkosi Sikelela phambi kokudlala umdlalo.		
Siwucula esikolweni uMhobe weSizwe.		



Masifunde

Xa umntu ebona intsajino magama akho (indlela ethile osayina ngayo igama lakho) eleteni, bayazi ukuba ivela kuwe ileta leyo. IMbasa yeSizwe ifana nomtyibelo welizwe. Xa sibona iMbasa yeSizwe sethu encwadini okanye kwingxelo siyazi ukuba ivela kurhulumente waseMzantsi Afrika. IMbasa yeSizwe sethu inemifanekiso emininzi kuyo. Ingulowo nalowo unentsingiselo yohlobo olulodwa.

Ingxangxosi ngamaphiko ayo anabileyo, ingumlindi wesizwe

Intyatyambo yesiqwane, imele ubuhle belizwe

Amabamba endlovu, amele ubulumko bethu

Izikhwebu zengqolowa, zibonisa ukuchuma kwelizwe lethu, ukuze sikwazi ukulima ukutya okwaneleyo



Ilanga eliphumayo, elithetha ukukhanya nobomi

Umkhonto kunye negqudu ezingqengqileyo, zibonisa ukuba kukho uxolo kweli lizwe

Ikhaka, libonisa ukuba sikulungele ukujongana nayo nantoni eyenzekayo

Imizobo esematyeni emibini yabaThwa, ukusikhumbuza ngabantu bokuqala ababehlala elizweni lethu

Isaci sethu, Ike e:/xarra//ke, esilulwimi lwamaQhakancu nabaThwa sithetha ukuba "abantu abahlukileyo bayamanyana"



Masithethe

Thetha nomhlobo wakho ngokuba ubuyibone phi iMbasa yeSizwe. Ungakwazi ukubonisa umhlobo wakho iMbasa yeSizwe ngoku?



Masibhale

Bhala ezinye iindawo ezi-2 okanye ezi-3 apho ubone khona iMbasa yeSizwe sethu.





Amagugu esizwe



Masifunde

Jonga imifanekiso. Umfanekiso ngamnye umele amagugu esizwe saseMzantsi Afrika. Uphawu ngalunye lumela into ethile. Zonke ezi mpawu zimele izinto ezithile zaseMzantsi Afrika.



Masibhale

Bhala isihloko kumfanekiso ngamnye weempawu zethu zesizwe ezilapha ngezantsi. Sebenzisa enye yezi zilandelayo:

iBhadi

intlanzi eyiGaljoen

umKhoba

iNdwe

isiQwane



Masenze

Peyinta enye yezi mpawu. Xoxa ngombala, imvakalo kunye nokumila.



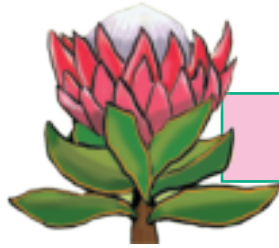
Masibhale

Gqibezela ezi zivakalisi. Sebenzisa la magama.

Umhla:



umKhoba



isiQwane



ibhola yombhoxo



intlanzi

5

ntlanu



isilwanyana



iisenti ezintlanu

Intyatyambo yesizwe sethu _____.

Umthi wesizwe sethu _____.

IBhadi _____ sesizwe sethu.

Intaka yethu yesizwe ikukhozo lwemali _____.

Isilwanyana sesizwe sethu sikwijezi yeqela lethu _____.

Kukho iilwimi ezi _____ kumhobe wesizwe sethu.

IGaljoen yi _____ yesizwe sethu.



Iindlela ezahlukeneyo zoxibelelwano



Masithethe

Jonga umfanekiso uze uthethe nomhlobo wakho ngazo zonke iindlela ezahluka-hlukeneyo zokunxibelelana ozibona emfanekisweni.



Masifunde

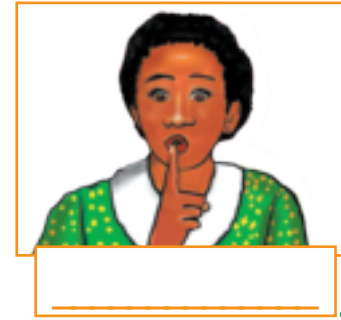
Ukuthetha yindlela yokunxibelelana esiyazi sonke. Siyakwazi ukunxibelelana ngokubhala. Maxa wambi sinxibelelana ngaphandle kolwimi. Jonga imifanekiso kwiphepha elilandelayo. Umfanekiso ngamnye unento osixelela yona ungasebenzisanga ntetho.



Masibhale

Kwizithuba ezisezantsi kwemifanekiso, bhala oko umfanekiso ngamnye unxibelelana nathi ngako.

Umhla:



Masenze

Funda ezi zivakalisi zisezibhokisi

Singaxelela umntu ngazo zonke ezi zinto ngaphandle kokuthetha. Nikanani amathuba nomhlobo wakho nibonisane ngendlela esinxibelelana ngayo.

Hlala ecaleni kwam.

Andazi.

Ndiyacaphuka.

Yizani apha.

Hayi.

Thulani.

Ewe.



Masifunde

Xa uthetha nomntu ngefowuni, kufuneka ukhumbule ukuba akakuboni. Xa usebenzisa izandla okanye ubuso bakho, akanakuyibona into oyithethayo. Kodwa unako ukusebenzisa ilizwi lakho, kuba uyakwazi ukuva ilizwi lakho. Unako ukulenza livakale linovuyo okanye lilusizi ukuze bakuve onxibelelana nabo ngako.



Masenze

Nikanani amathuba nithethe ezi zivakalisi nomhlobo wakho. Bonisa indlela oziva ngayo ngobuso bakho, ngezandla nangelizwi.

Thetha isivakalisi



Utata wam undise elayibrari.

Siye edolophini ngetekisi.

Bendihleli ekhaya ngoMgqibelo.

Umakhulu ubuyela ekhaya.

Bekukho ingxolo enkulu.

Namhlanje kungoLwesine.

Uvakalelo

uvuyo

uvuyo

ukucaphuka

usizi

ukoyika

uvuyo



Titshala:
Sayina:
Umhla:

Ngoku thetha izivakalisi kwakhona. Kweli xesha sebenzisa ilizwi lakho **KUPHELA** ukubonisa iimvakalelo.

Ukunxibelelana ngokubhala nangamazwi ethu



Masibhale


Sisebenzisa ukubhala kwiintlobo ezahlukileyo zokunxibelelana. Jonga imifanekiso uze ubhale ileyibhile echanekileyo ezantsi komfanekiso ngamnye. Sebenzisa elinye lala magama alandelayo.


i-SMS	i-imeyile	ileta	ifekisi	iposikhadi
				
<input type="text"/>	<input type="text"/>	<input type="text"/>	<input type="text"/>	<input type="text"/>



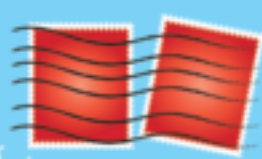
Masibhale

Yenza ngathi useholideyini kwidolophu ongazange waya kuyo ngaphambili. Bhalela umhlobo wakho iposikhadi ngako konke okubonileyo nokwenzileyo.





Air Mail



POST CARD



Umhla:



Masenze

Ngoku sebenza nomhlobo wakho.

- Hlalani umqolo womnye uthi nca kowomnye nenze ngathi nithetha ezifowunini.
- Nikanani amathuba nithetha ngeholid e yenu.
- Sebenzisa ilizwi lakho uvakalise indlela oziva ngayo.



Masithethe

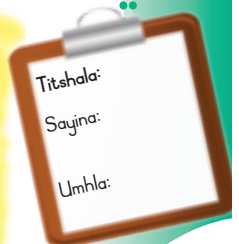
Jonga umfanekiso uze uthethe nomhlobo wakho ngawo. Aba bantwana bawasebenzisa njani amazwi abo? Thetha ngezinye iindlela zokusebenzisa ilizwi ukuze unxibelelane nabanye ngezimvo.



Phuma phandle

Masidlale ibhola yeqakamba

- Zahluleni ngokwamaqela amabini.
- Khethani iqela eliza kubetha ibhola neqela eliza kubhowula lize lichole ibhola ebaleni.
- Uyayazi imithetho yokudlala ibhola yeqakamba? Ukuba akuyazi, uza kukunceda utitshala wakho.



Titshala:
Sayina:
Umhla:



Ezinye iindlela zokunxibelelana



Uyayazi indlela ehanjwa yiposikhadi yakho ukuze ifike kumhlobo wakho? Funda ezi nkcazelo zamanyathelo ale ndlela. Jonga imifanekiso. Faka iinombolo ukuze ihambelane namanyathelo akwinkcazelo.



1
Ubhala iposikhadi yakho.



2
Uthenga isitampu usincamathelise kwiposikhadi yakho.



3
Uposa iposikhadi yakho kwibhokisi yeposi.



4
Iveni yeposi iyisa eposini iposikhadi yakho.

5
Eposini, iposikhadi yakho iyahlelwa ize ibekwe nenye iposi eya kwidolophu enye nayo.

6
Ngoku iposikhadi yakho ithunyelwa ngololiwe okanye ngenqwelomoya kwiposi yaloo dolophu.

7
Unoposi uyilanda eposini ayise kwikhaya lomhlobo wakho.





Umhla:



Masithethe

Jonga umfanekiso uze uthethe nomhlobo wakho ngawo. Zingaphi iindlela ezahluka-hlukenenyo onokuzifumana zokunxibelelana nabanye?



Masibhale

Jonga umfanekiso kwakhona uze uphendule le mibuzo.

Bangaphi abantu abanento abayifundayo?

Yintoni esinokuyifundela ulonwabo?

Yintoni esinokuyifunda yonke imihla ukuze sifumanise okwenzeka elizweni lethu?





Unxibelelwano ngezibhengezo nangomculo



Masenze

Izaziso nazo ziyenye yeendlela zokunxibelelana. Yila eyakho ipowusta yokwazisa ngesiselo seziqhamo esitsha. Bandakanya oku kulandelayo kwipowusta yakho:

- Igama lesiselo seziqhamo
- Ixabiso lesiselo seziqhamo
- Umfanekiso weziqhamo
- Inkcazelo yesiselo seziqhamo
- Inkcazelo yabantu abanokusithanda esi siselo seziqhamo
- Indawo abanokusithenga kuyo isiselo seziqhamo

Bonisa abahlobo bakho nize nixoxe ngemibala kunye neemilo ozisebenzisileyo.





Masithethe

- Thetha nomhlobo wakho ngendawo oza kuxhoma kuyo ipowusta yakho.
- Ufuna ukuqiniseka ukuba baninzi abantu abayibonayo.



Umhla:



Masenze

Umculo nawo yenye indlela yokunxibelelana.
Thetha nomhlobo wakho ngeentlobo ezahlukileyo zeengoma ozaziyo.

- ♪ Nikanani amathuba okucula ingoma enonwabisayo.
- ♪ Ngoku culani ingoma yokuhamba.
- ♪ Kutheni iyingoma elungileyo efanele ukuhamba?
- ♪ Ucula nini esikolweni?
- ♪ Cula ingoma eyiyeyona uyithandayo.
- ♪ Xelesa umhlobo wakho ukuba kutheni uyithanda nje.



Phuma phandle

Zahluleni ngokwamaqela ezine.
Niza kwenza ugqatso lonikezelwano, irileyi.
Imbaleki yokuqala kwiqela ngalinye inentongana.
Xa utitshala eninika umyalelo wokubaleka, iimbaleki zokuqala zibaleka ziye kwezesibini zizinike intongana.
Iimbaleki zesibini zibaleka ziye kunika ezesithathu.
Iimbaleki zesithathu zibaleka zinike iimbaleki zesine iintongana.
Zona zibaleka ziyokufika entanjeni.





57

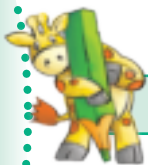
Sinxibelelana njani xa singeva ngeendlebe?

Ikota 4 – Iveki 5



Masenze

Sisebenzisa iindlebe zethu xa sinxibelelana. Zoba umfanekiso obonisa umntu omameleyo. Bonisa oku akumameleyo.



Masibhale

Phendula le mibuzo.

Uyathanda ukumamela unomathotholo? Xela ukuba kutheni.

Loluphi ulwazi onokulufumana kunomathotholo?

Wenzani umsasazi kanomathotholo?





Masenze

Yenza ngathi ufunda iindaba kunomathotholo. Sebenzisa ilizwi lakho ukuze utsale umdla wabaphulaphuli. Sebenzisa la magama:

Umhla:

izaqhwithi nezikhukula

iiholide zezikolo

iindlela ziphithizela kakhulu

umfundi webanga lesi-2

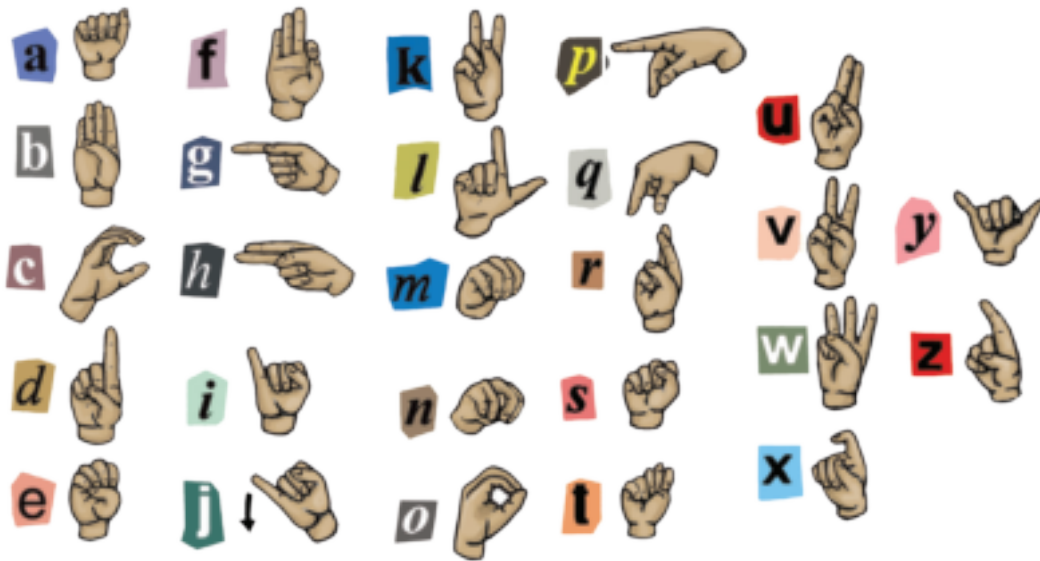
ibhaso leMathematika

aBafana Bafana



Masifunde

Abantu abakhubazekileyo bakholisa ukufumanisa iindlela ngeendlela zonxibelelwano. Umzekelo, abantu abaninzi abangevayo ngeendlebe abakwazi ukuthetha. Basebenzisa izandla xa bethetha nabanye abantu. Olu lwimi sithi luLwimi lwezandla. Imiqondiso eyahlukileyo ineentsingiselo ezahlukileyo. Zama ukuxela igama lakho ngolwimi lwezandla. Ngoku sebenzisa ulwimi lwezandla ukuze ubulise umhlobo wakho.



Masibhale

Zihlole ngokubhekiselele emsebenzini wangaphambili. Funda imibuzo wenze uphawu lokukorekisha (✓) okanye ungxabalaza (✗) kwibhokisi echanekileyo.

Ukuzihlola

	✓	✗
Bekulula ukubonisa igama lam ngolwimi lwezandla.		
Ndikwazile ukuqonda ulwimi lwezandla lwabahlobo bam.		
Ndikonwabele ukunxibelelana ngolwimi lwezandla.		



Sinxibelelana njani xa singaboni?



Masenze

Cimela ucinge ngezinto ongenakuzenza xa ungaboni.

Ungakwazi ukufunda incwadi?

Ungakwazi ukubhala?

Uyambona umhlobo wakho xa encumile?

Unxibe ntoni umhlobo wakho namhlanje?

Vula amehlo uqwalasele. Ubunyanisile okanye uphosisile?



Masifunde

Abantu abaziimfama ababoni, basebenzisa i-alfabhethi yeBreyile xa befunda okanye bebhala.

I-alfabhethi yeBreyile isebenzisa amaqhuqhutya onokuweva ephapheni ngeminwe yakho. Xa abantu abayaziyo iBreyile bebalekisa iminwe kula maqhuqhutya, bafunda amagama ngeminwe yabo. I-alfabhethi yeBreyile yaqanjwa yindoda eyayibizwa ngokuba nguLouis Braille, owayengaboni.





Umhla:



Masifunde

Jonga i-alfabethi yeBreyile.

A	B	C	D	E	F	G	H	I
J	K	L	M	N	O	P	Q	R
S	T	U	V	W	X	Y	Z	



Masenze

Bhala igama lakho ngeBreyile.

--	--	--	--	--	--	--	--	--	--

--	--	--	--	--	--	--	--	--	--



Masibhale

Zihlole ukuba uqhube njani kumsebenzi ongaphambili. Funda imibuzo uze wenze uphawu lokukorekisha (✓) okanye ungxabalaza (✗) kwibhokisi echanekileyo.

Ukuzihlola

Ndikwazile ukubonisa igama lam ndisebenzisa ulwimi lwezandla.		
Ndiye ndakwazi ukubhala igama lam ngobhalo lweBreyile.		



Titshala:
Sayina:
Umhla:

Imini nobusuku



Masithethe

Jonga le mifanekiso uze uthethe nomhlobo wakho ngayo.



Masibhale

Phinda ujonge imifanekiso uze uphendule le mibuzo.

Ubusuku bukowuphi umfanekiso?

Xela ukuba kutheni usitsho nje.

Elona xesha ulithandayo – lelasemini okanye lelasebusuku? Xela ukuba kutheni usitsho nje.

Singakhanyisa ngantoni xa kumnyama?



Masithethe

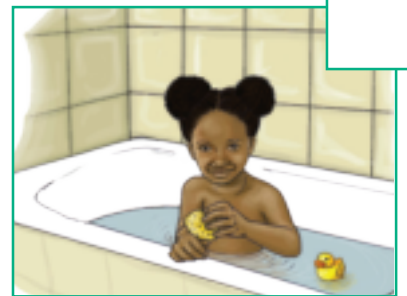
Jonga imifanekiso uze uthethe nomhlobo wakho ngayo. Ifuna ntoni itotshi ukuze isebenze? Kufuneka wenze ntoni ukuze ikhanyise ithotshi?

Umhla:



Masibhale

Faka iinombolo kule mifanekiso ngokulandelelana kwayo ukuze ubonise okwenziwa nguRefiloe ukususela ngexesha lesidlo sasebusuku aye aye kulala.



Ngoku khetha inkcazelo ngomfanekiso ngamnye kuludwe olukwithegibhile. Bhala inombolo yomfanekiso ochanekileyo ecaleni kwenkcazelo.

Udiniwe kwaye ukhawuleze walala.	
Uyahlamba.	
URefiloe nosapho lwakhe bayakuthanda ukuthetha, batye isidlo sangokuhlwa kunye baze babaliselane amabali ngokuhlwa.	
Ngoku lixesha lokuba uRefiloe aye kulala.	
Uhlamba amazinyo.	
Emva kwesidlo sasebusuku bonke bancedisa ngokuhlamba izitya nokuqoqosha ekhitshini.	





60

Amaphupha neminqweno ebusuku

Ikota 4 – Iveki 6



Masenze

Yenza ngathi ubunephupha elingaqhelekanga. Zoba umfanekiso wephupha lakho.



Masibhale

Ngoku bhala izivakalisi ezimbalwa ngephupha elo.

Kwenzeke ntoni?
Ubone ntoni?
Uzive njani?





Masibhale

Abanye abantu bathi xa ubona inkwenkwezi ebinzayo, ungaxela umnqweno wakho. Yenza ngathi ubone inkwenkwezi ebinzayo, uze ubhale phantsi umnqweno wakho.

Umhla:

Ndingwenela

Ndingathanda ukuphupha

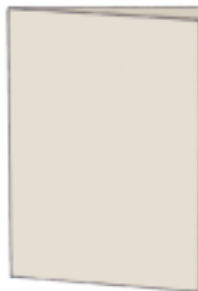


Masenze

Zoba umfanekiso wakho waxa ulele.

Uya kufuna oku:

- naluphi uhlobo lwepeyinti
- ibhrashi yepeyinti
- amanzi asejagini okanye ekomityini okucoca ibrashi yakho yokupeyinta
- iphepha elimhlophe



Ofanele ukukwenza:

Songa iphepha elikhulu phakathi, phinda ulivule. Kwelinye icala lomphetho, zipeyinte unxibe impahla yokulala. Ngoku songa iphepha phakathi kwakhona uze ulihlikhle ngesandla sakho. Xa ulivula kwakhona iphepha ubona iwele lakho kwelinye icala.



Phuma phandle

Zifudumeze: nyikinya amagxa akho, yekelela iingalo, vuthulula izandla. Jiwuzisa ingalo yakho yasekunene iye ngaphambili ijikeleze. Kwenze oku amaxa amathandathu. Ngoku phinda wenze oko ngengalo yakho yasekhohlo. Jiwuzisela ingalo yakho yasekunene ngasemva amaxesha amathandathu. Ngoku phinda wenze oko ngengalo yakho yasekhohlo. Jiwuzisela zombini iingalo zakho ngaphambili amaxa amathandathu. Zijiwuzisele ngasemva zombini. Ngoku jiwuzisela ingalo enye ngemva enye ngaphambili, ngaxeshanye. Kwenze oku amaxa amathandathu uze emva koko utshintshe iingalo. Zipholise: Beka izandla zakho esiswini. Bizela umoya ngaphakathi esiswini ude ubone izandla zakho zishukuma. Wukhuphe kancinci umoya. Phinda oku kane.



Umsebenzi wasemini nowasebusuku

















Masithethe

Jonga imifanekiso uthethe nomhlobo wakho ngayo. Ngabaphi abantu abasebenza ebusuku? Ngabaphi abantu abasebenza emini?



Masibhale

Ngabaphi kwaba bantu abenza umsebenzi wabo emini nasebusuku? Yenza uphawu lokukorekisha (✓) ecaleni kwemifanekiso echanekileyo.

 <input type="checkbox"/>	 <input type="checkbox"/>	 <input type="checkbox"/>	 <input type="checkbox"/>		
 <input type="checkbox"/>	<p>Sisebenza emini nasebusuku.</p>		 <input type="checkbox"/>		
 <input type="checkbox"/>			 <input type="checkbox"/>		
 <input type="checkbox"/>			 <input type="checkbox"/>		
 <input type="checkbox"/>			 <input type="checkbox"/>	 <input type="checkbox"/>	 <input type="checkbox"/>



Masithethe

Thetha kwiqela lakho ngabo bonke abantu abasebenza ebusuku kuphela.

Umhla:

Ngaba ootitshala basebenza ebusuku kuphela?

Ngaba oonogada bokhuseleko basebenza ebusuku kuphela?

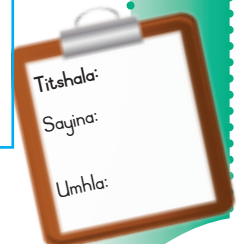
Ukhona umntu omaziyo osebenza ebusuku kuphela? Wenza ntoni loo mntu?



Masibhale

Bhala ngohlobo lomsebenzi owenziwa ngumntu ngamnye osemfanekisweni ebusuku.





Ukwenza umsebenzi olungileyo ebusuku



Masithethe

Jonga imifanekiso uze uthethe nomhlobo wakho ngayo. Lithini ibali olixelwa yile mifanekiso?





Umhla:



Masibhale

Jonga imifanekiso wandule ukuphendula imibuzo.

Ucinga ukuba ugqirha utheni kumsebenzi wasemgodini?

Umsebenzi wasemgodini usebenzisa ntoni ukuze abone phantsi komhlaba?

Kutheni kukho unogada wokhuseleko esibhedlele?

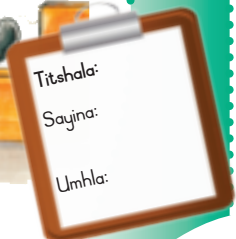
Ukhona umntu omaziyo osebenza ebusuku? Wenza msebenzi mni?

Ingaba kungenzeka ukuba umntu asebenze imini nobusuku okokoko?
Kutheni ucinga njalo nje?



Phuma phandle

- Nyuka usihla inqwanoqwa kalishumi. Yima uphefumle ngokuzola.
- Phinda unyuke usihla amanye amaxa alishumi. Vula uvale izandla zakho xa usenza oku.
- Phinda unyuke usihla amanye amaxa alishumi. Vuthulula iingalo zakho.
- Phinda unyuke usihla kalishumi okokugqibela. Qhwaba izandla zakho xa usenza oku.



Masithethe

Jonga imifanekiso uthethe nomhlobo wakho ngayo. Jonga ukuba zingaphi izilwanyana onokuzinika amagama kwezi. Zikhona owakhe wazibona kwezi?



Masifunde

Izilwanyana ezininzi ziyazimela zilale emini, zizula-zule ebusuku kuphela.

Sizibiza ngokuba zizilwanyana zasebusuku. Ezinye izilwanyana zasebusuku ziphila apho kushushu kwaye kome kakhulu khona emini. Zilinda kuqale kuphole emva kokuba ilanga litshonile phambi kokuba ziphume phandle.

Ezinye izilwanyana zasebusuku zizimela ezinye izilwanyana ezizingela emini.

Kwakhona kukho izilwanyana zasebusuku ezizingela ebusuku.

Masibhale

Ngoku phendula le mibuzo.

Kutheni ezinye izilwanyana zizingela ebusuku nje?

Zeziphi izilwanyana okhe waziva ebusuku?



Masibhale

Umhla:

Funda ezi zivakalisi. Yenza uphawu lokukorekisha (✓) ebhokisini xa ucinga ukuba isivakalisi sichanekile. Yenza ungxabalaza (✗) xa ucinga ukuba asichanekanga.

Zihlole	✓	✗
Ezinye izilwanyana zasebusuku ziva ngeendlebe kakuhle kakhulu.		
Ezinye izilwanyana zilala emini ukuze zihlale zipholile.		
Izilwanyana zasebusuku ezininzi zijoja kakuhle zineempumlo ezibukhali.		
Zonke iintaka zizilwanyana zasemini.		



Masifunde

Izikhova zilala emini ziphume ebusuku zizingele. Zinamehlo amakhulu ajonge phambili, njengawethu. Izikhova zibona kakuhle ngokukhanya kwenyanga. Aziboni xa kumnyama thsu.

Izikhova zineenzipho ezomelele kakhulu nezibukhali.

Zizisebenzisela ukubamba izilwanyana ezizizingelayo. Amaphiko azo agqunywe ngeentsiba ezithambileyo. Ezi ntsiba zanceda izikhova zibhabhe zithe cwaka ukuze zingeviwa zizilwanyana ezizizingelayo.



Masibhale

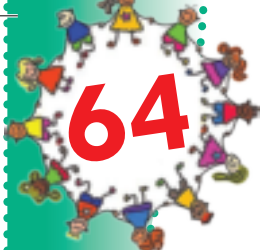
Funda ngesikhova kwakhona uphendule le mibuzo.

Isikhova sizibamba njani izilwanyana esizizingelayo?

Ingaba izikhova zizingela izilwanyana ezikhulu okanye ezincinane?

Isikhova sineenzipho ezinjani?

Titshala:
Sayina:
Umhla:



Isilwanyana esihlala sikhuselekile ebusuku



Masithethe

Jonga umfanekiso uthethe nomhlobo wakho ngawo. Uyalazi igama lesi silwanyana? Sikhona owakha wasibona?



Masifunde

Iincanda zilala emini. Ebusuku zikhangela ukutya. Zisebenzisa iinzipho zazo ezomeleleyo ukwemba iingcambu namagaqa okutya. Iincanda ziyathanda ukuzimela phantsi kwamawa. Zineentsiba ezigqume wonke umzimba. Ezi ntsiba zifana neenaliti ezibukhali kakhulu. Xa isilwanyana esizingelayo sisondelela kakhulu, incanda ibuya umva ngokukhawuleza ihlabe umzingeli ngeentsiba zayo. Iintsiba zisuka ziwe kuyo ukuze ibaleke. Umzingeli ukholisa ukuva ubuhlungu kakhulu angakwazi ukuyileqa incanda leyo!



Masibhale

Ngoku phendula le mibuzo.

Yintoni igama lesi silwanyana?

Senza ntoni xa kusondela kufutshane kakhulu kuso isilwanyana esizingelayo?

Sihlala phi?

Sitya ntoni?

Ingaba sisilwanyana sasebusuku?

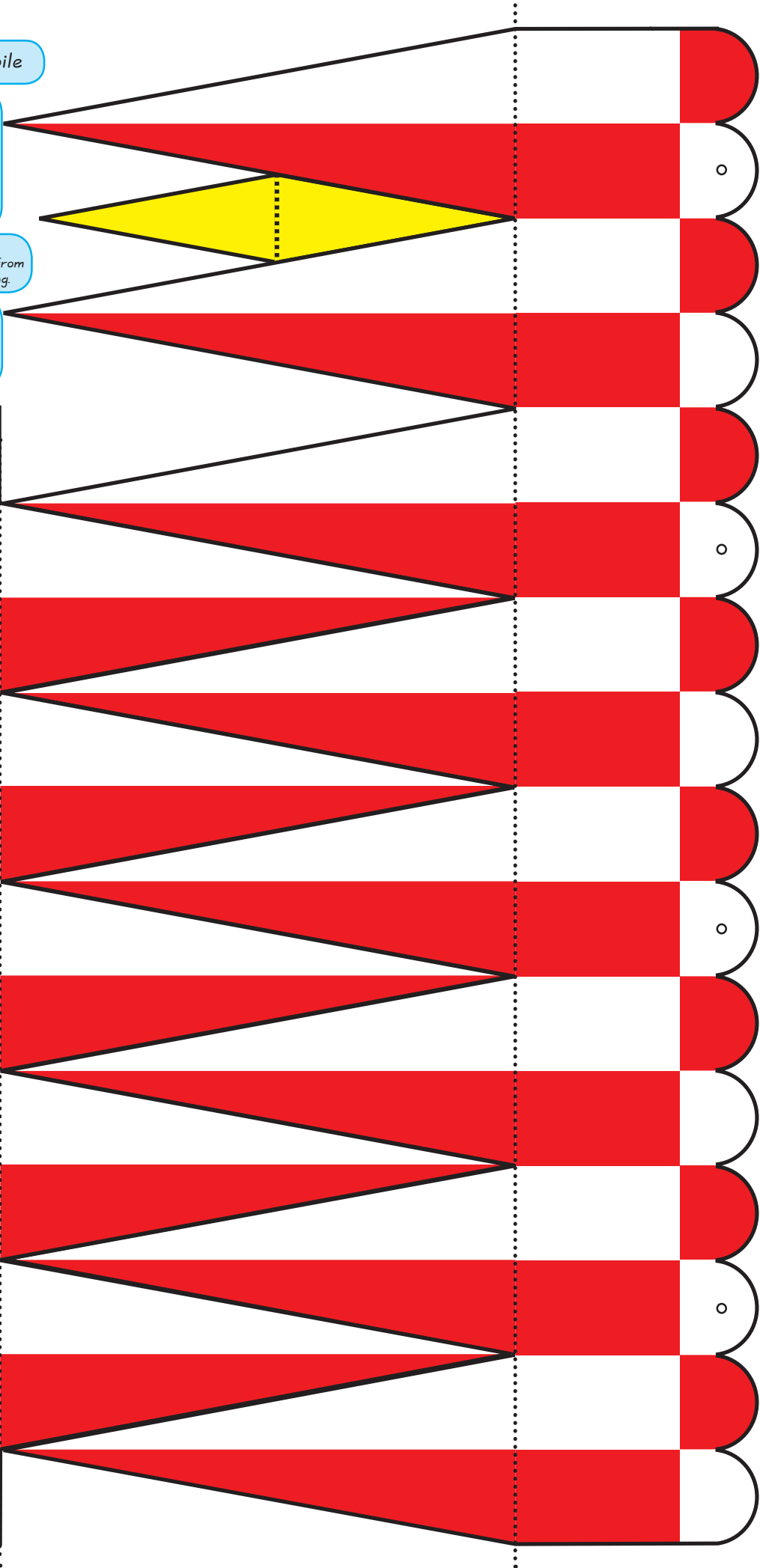
Make a circus mobile



Cut out the circus tent roof on the solid black lines. Glue the ends together to form a circle. Now join all the points together at the top with celotape.

Cut out the circus characters and hang them from the circus tent with string.

Fold the flag around the string at the top and glue it. Fold the stars around the string and glue it.



glue here

glue here

